

EXHIBIT "D" TO CONDOMINIUM DECLARATION OF
SANTA LUZ,
A CONDOMINIUM
 LYING IN
 SECTION 18, TOWNSHIP 45 SOUTH, RANGE 26 EAST
 LEE COUNTY, FLORIDA

CONDOMINIUM PLAT BOOK PAGE

GENERAL NOTES:

ALL USES ARE RESIDENTIAL.

UNDERGROUND UTILITIES AND IMPROVEMENTS ARE NOT SHOWN.

ELEVATIONS ARE BASED ON N.A.V.D. OF 1988 AND NGS BENCHMARK "BUCK".

ROOF OVERHANGS, DECORATIVE WALLS, SEWER, WATER, ELECTRIC LINES AND SERVICE BOXES ARE NOT SHOWN.

THE DEVELOPER RESERVES THE RIGHT TO GRANT EASEMENTS FOR INGRESS/EGRESS, DRAINAGE, UTILITIES, RECREATIONAL PURPOSES AND OTHER ITEMS ADDRESSED IN THE DECLARATION OF CONDOMINIUM.

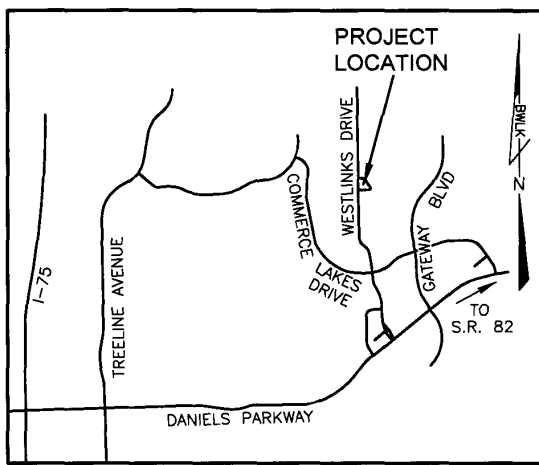
THESE DRAWINGS ARE PREPARED AS SURVEYOR'S EXHIBITS TO THE DECLARATION OF CONDOMINIUM FOR "SANTA LUZ, A CONDOMINIUM". THIS CONDOMINIUM IS SUBJECT TO THE PROVISIONS SET FORTH IN SAID DECLARATION. REFER TO THE DECLARATION OF CONDOMINIUM FOR DEFINITIONS PERTAINING TO EASEMENTS, COMMON ELEMENTS, LIMITED COMMON ELEMENTS AND UNIT BOUNDARIES.

BEARINGS BASED ON THE RECORDED PLAT WITH THE EAST RIGHT-OF-WAY LINE OF WESTLINKS DRIVE BEARING N00°40'44"W.

SUBJECT TO EASEMENTS, RESTRICTIONS, RESERVATIONS AND RIGHTS-OF-WAY (RECORDED AND UNRECORDED).

ALL BUILDINGS AND IMPROVEMENTS SHOWN HEREON ARE PROPOSED EXCEPT AS NOTED. PROPOSED SITE IMPROVEMENTS ARE FROM ARCHITECTURAL AND CIVIL PLANS AS PROVIDED BY CLIENT.

THE PHASE LINES ARE SUBJECT TO REVISION DEPENDING ON THE ACTUAL SEQUENCE OF CONSTRUCTION.



VICINITY SKETCH
NOT TO SCALE

THE CONSTRUCTION OF
 THE IMPROVEMENTS ARE
 NOT SUBSTANTIALLY
 COMPLETE AT THIS TIME
 UNLESS SHOWN OTHERWISE.

- LEGEND**
- ⊞ = STORM MANHOLE
 - ⊞ = ELECTRIC METER
 - ⊞ = ELECTRIC BOX
 - ⊞ = CATCH BASIN
 - ⊞ = IRRIGATION VALVE
 - ⊞ = WATER VALVE
 - ⊞ = SANITARY MANHOLE
 - ⊞ = TELEPHONE BOX
 - ⊞ = FIRE HYDRANT
 - ⊞ = YARD DRAIN
 - ⊞ = CABLE TELEVISION BOX
 - ⊞ = TRANSFORMER
 - ⊞ = WATER METER
 - BFP- = BACK FLOW PREVENTER
 - ⊞ = CLEANOUT

DRAWING INDEX

| SHEET NO. | TITLE |
|-----------|---|
| 1 | COVER SHEET |
| 2 | BOUNDARY SURVEY |
| 3 | UTILITY EASEMENTS |
| 4 | OVERALL PLOT PLAN |
| 5 | OVERALL PHASING PLAN |
| 6 | OVERALL PHASING PLAN-TABLES |
| 7 | DETAIL PHASE I |
| 8 | DETAIL PHASE II |
| 9 | DETAIL PHASE III |
| 10 | DETAIL PHASE IV |
| 11 | DETAIL PHASE V |
| 12 | DETAIL PHASE VI |
| 13 | DETAIL PHASE VII |
| 14 | DETAIL PHASE VIII |
| 15 | DETAIL PHASE IX |
| 16 | DETAIL PHASE X |
| 17 | DETAIL PHASE XI |
| 18 | UNIT BOUNDARIES-GROUND FLOOR |
| 19 | UNIT BOUNDARIES-SECOND FLOOR |
| 20 | VERTICAL BOUNDARIES |
| 21 | FLOOR PLAN-GROUND FLOOR |
| 22 | FLOOR PLAN-SECOND FLOOR |
| 23 | BUILDING 1-UNIT BOUNDARIES-GROUND FLOOR |
| 24 | BUILDING 1-UNIT BOUNDARIES-SECOND FLOOR |

CERTIFICATION FOR BOUNDARY SURVEY:
 *NOT VALID WITHOUT THE SIGNATURE AND THE ORIGINAL RAISED SEAL OF A FLORIDA LICENSED SURVEYOR AND MAPPER.
 BEAN, WHITAKER, LUTZ & KAREH, INC.

 SCOTT C. WHITAKER, P.S.M., NO. LS4324
 PROFESSIONAL SURVEYOR & MAPPER
 STATE OF FLORIDA
 - THIS SURVEY WAS PREPARED WITHOUT BENEFIT OF ABSTRACT OF TITLE AND ALL MATTERS OF TITLE SHOULD BE REFERRED TO AN ATTORNEY AT LAW.
 - THIS CERTIFICATION IS ONLY FOR THE LANDS DESCRIBED HEREON.
 - IT IS NOT A CERTIFICATION OF TITLE, ZONING, SETBACKS, OR FREEDOM OF ENCUMBRANCES.

COVER SHEET

Bean, Whitaker, Lutz & Kareh, Inc. (LB 4919)
 CONSULTING ENGINEERS - SURVEYORS AND MAPPERS - PLANNERS
 13041 MCGREGOR BOULEVARD, FORT MYERS, FLORIDA 33919-5910 (239) 481-1331

CD41188_1.DWG

| DATE | PROJECT NO. | DRAWN BY | SCALE | SHEET | FILE NO. (S-T-R) |
|----------|-------------|----------|----------|---------|------------------|
| 11-16-10 | 41188 | CNA | 1" = N/A | 1 OF 24 | 18-45-26 |

SURVEY PLAT

OF
TRACT "L"
GATEWAY PHASE 9
AS RECORDED IN PLAT BOOK 47, PAGES 10-20
LYING IN
SECTION 18, TOWNSHIP 45 SOUTH, RANGE 26 EAST,
LEE COUNTY, FLORIDA

NOTES:
SURVEY BASED ON THE RECORDED PLAT AND FOUND MONUMENTATION.
BEARINGS BASED ON THE RECORDED PLAT WITH THE EAST RIGHT-OF-WAY LINE OF WESTLINKS DRIVE BEARING N00°40'44"W.
ELEVATIONS ARE BASED ON N.A.V.D. OF 1988 AND NGS BENCHMARK "BUCK".
DIMENSIONS ARE IN FEET AND DECIMAL PARTS THEREOF.

PARCEL SUBJECT TO EASEMENTS, RESTRICTIONS, RESERVATIONS AND RIGHTS- OF-WAY (RECORDED AND UNRECORDED, WRITTEN AND UNWRITTEN).
THIS PARCEL LIES IN NO SPECIAL FLOOD HAZARD AREA, WITH NO BASE FLOOD ELEVATION PER FLOOD INSURANCE RATE MAP NUMBER 12071C0434F, PANEL NOT PRINTED AND INDEX DATE BEING 8-28-08 (COMMUNITY NAME: LEE COUNTY AND COMMUNITY NUMBER 125124). THE ELEVATIONS ON THE NEW FLOOD MAPS ARE BASED ON N.A.V.D. OF 1988.

THE F.E.M.A. FLOOD ZONE INFORMATION INDICATED HEREON IS BASED ON MAPS SUPPLIED BY THE FEDERAL GOVERNMENT. THIS FLOOD INFORMATION MUST BE VERIFIED WITH ALL PERMITTING REGULATORY ENTITIES PRIOR TO COMMENCING ANY WORK OR APPLICATION DEPENDENT ON SAID FLOOD INFORMATION.

IRON RODS "SET" ARE 5/8" X 18" REBAR WITH YELLOW CAP BEARING CORPORATION NO. LB4919.

UNDERGROUND IMPROVEMENTS, UTILITIES AND/OR FOUNDATIONS WERE NOT LOCATED UNLESS OTHERWISE NOTED.

WETLANDS, IF ANY, WERE NOT LOCATED.

THIS PLAT PREPARED AS A BOUNDARY SURVEY AND IS NOT INTENDED TO DELINEATE THE JURISDICTION OR JURISDICTIONAL AREAS OF ANY FEDERAL, STATE, REGIONAL OR LOCAL AGENCY, BOARD, COMMISSION OR OTHER ENTITY.

PARCEL CONTAINS 8.41 ACRES (366,551 SQUARE FEET) MORE OR LESS.

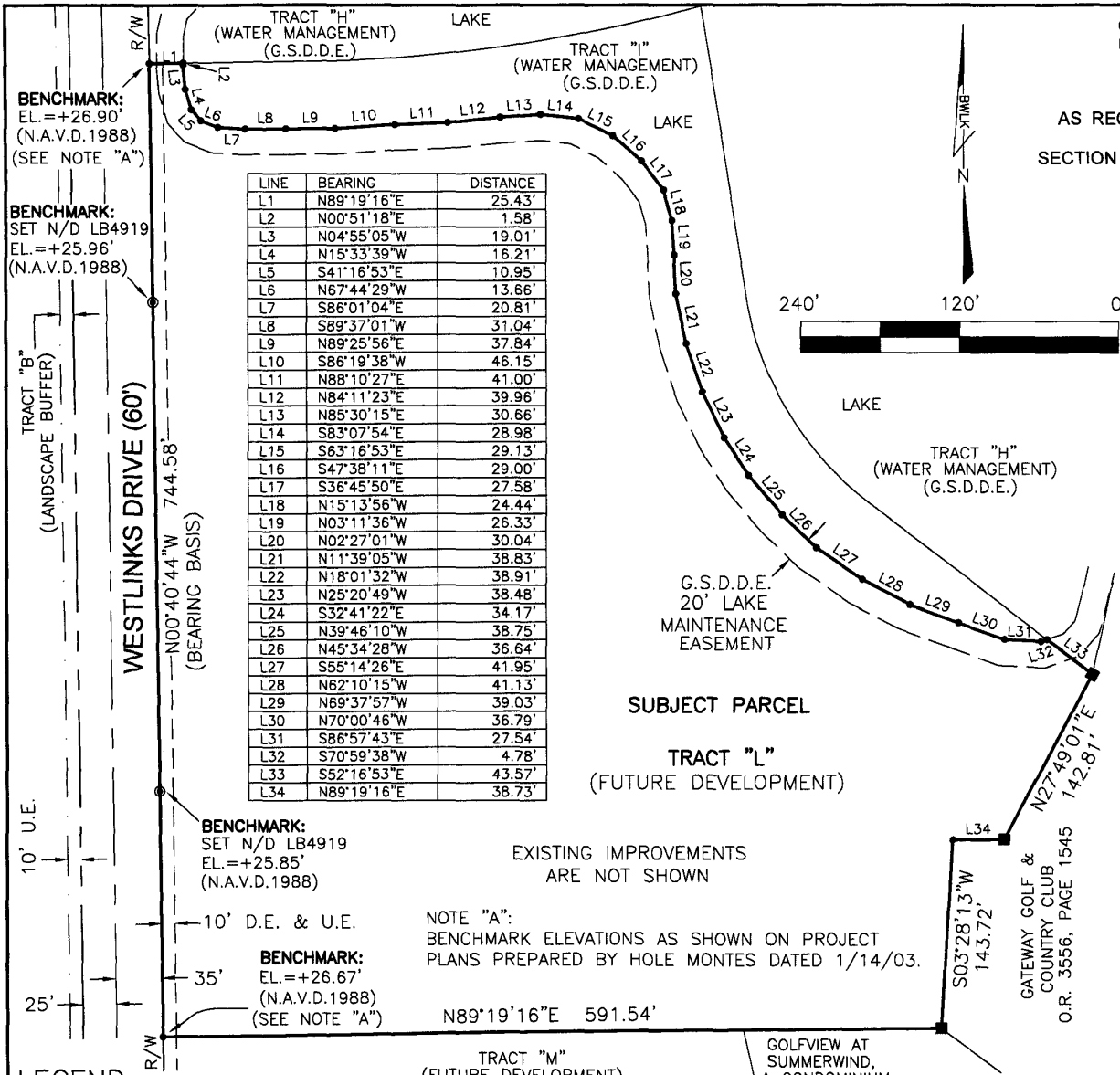
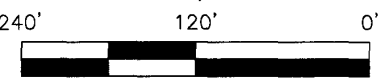
SURVEY MEETS OR EXCEEDS THE ACCURACY STANDARDS OF AN URBAN SURVEY (1:15,000).

PARCEL STRAP NO.: 18-45-26-32-000L0.0000.

DATE OF LAST FIELD WORK: 11-16-10.

BOUNDARY SURVEY

| LINE | BEARING | DISTANCE |
|------|-------------|----------|
| L1 | N89°19'16"E | 25.43' |
| L2 | N00°51'18"E | 1.58' |
| L3 | N04°55'05"W | 19.01' |
| L4 | N15°33'39"W | 16.21' |
| L5 | S41°16'53"E | 10.95' |
| L6 | N67°44'29"W | 13.66' |
| L7 | S86°01'04"E | 20.81' |
| L8 | S89°37'01"W | 31.04' |
| L9 | N89°25'56"E | 37.84' |
| L10 | S86°19'38"W | 46.15' |
| L11 | N88°10'27"E | 41.00' |
| L12 | N84°11'23"E | 39.96' |
| L13 | N85°30'15"E | 30.66' |
| L14 | S83°07'54"E | 28.98' |
| L15 | S63°16'53"E | 29.13' |
| L16 | S47°38'11"E | 29.00' |
| L17 | S36°45'50"E | 27.58' |
| L18 | N15°13'56"W | 24.44' |
| L19 | N03°11'36"W | 26.33' |
| L20 | N02°27'01"W | 30.04' |
| L21 | N11°39'05"W | 38.83' |
| L22 | N18°01'32"W | 38.91' |
| L23 | N25°20'49"W | 38.48' |
| L24 | S32°41'22"E | 34.17' |
| L25 | N39°46'10"W | 38.75' |
| L26 | N45°34'28"W | 36.64' |
| L27 | S55°14'26"E | 41.95' |
| L28 | N62°10'15"W | 41.13' |
| L29 | N69°37'57"W | 39.03' |
| L30 | N70°00'46"W | 36.79' |
| L31 | S86°57'43"E | 27.54' |
| L32 | S70°59'38"W | 4.78' |
| L33 | S52°16'53"E | 43.57' |
| L34 | N89°19'16"E | 38.73' |



BENCHMARK:
EL.=+26.90'
(N.A.V.D.1988)
(SEE NOTE "A")

BENCHMARK:
SET N/D LB4919
EL.=+25.96'
(N.A.V.D.1988)

TRACT "B"
(LANDSCAPE BUFFER)

10' U.E.

10' D.E. & U.E.

35'
BENCHMARK:
EL.=+26.67'
(N.A.V.D.1988)
(SEE NOTE "A")

LEGEND

- D.E. = DRAINAGE EASEMENT
- U.E. = UTILITY EASEMENT
- EL. = ELEVATION
- O.R. = OFFICIAL RECORD BOOK
- N.A.V.D. = NORTH AMERICAN VERTICAL DATUM
- G.S.D.D.E. = GATEWAY SERVICES DISTRICT DRAINAGE EASEMENTS
- = FOUND 5/8" IRON ROD WITH CAP STAMPED LB1772
- = FOUND 4"X4" CONCRETE MONUMENT (ILLEGIBLE)

EXISTING IMPROVEMENTS ARE NOT SHOWN
NOTE "A":
BENCHMARK ELEVATIONS AS SHOWN ON PROJECT PLANS PREPARED BY HOLE MONTES DATED 1/14/03.

TRACT "M"
(FUTURE DEVELOPMENT)
LAKEVIEW AT SUMMERWIND,
A CONDOMINIUM

GOLFVIEW AT SUMMERWIND,
A CONDOMINIUM

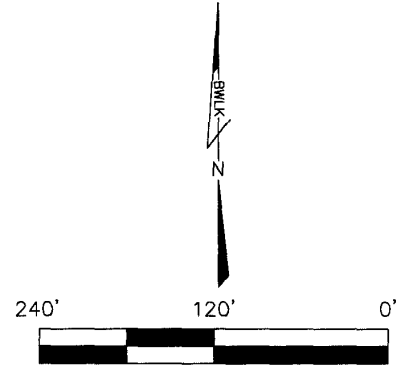
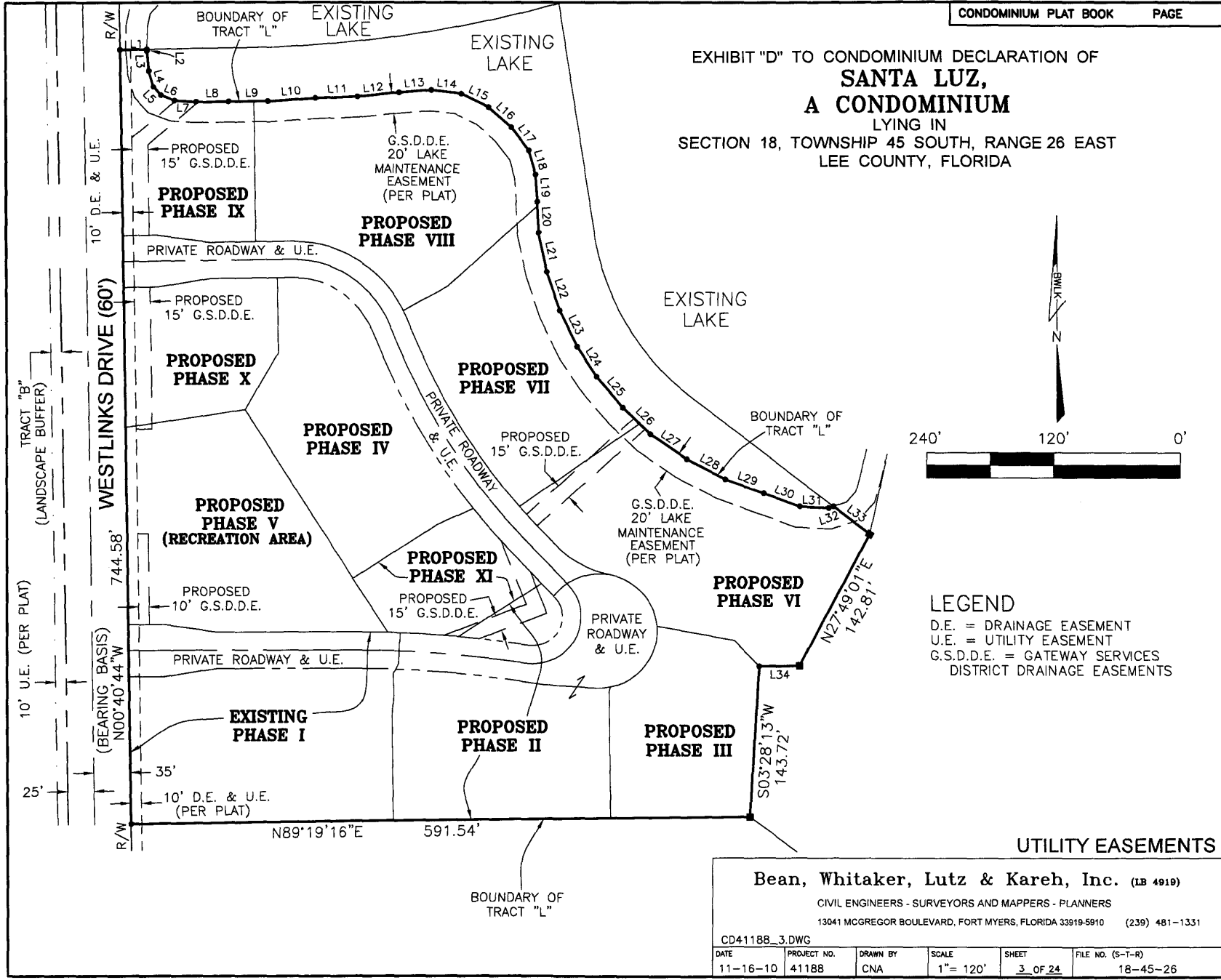
S03°28'13"W
143.72'
GATEWAY GOLF &
COUNTRY CLUB
O.R. 3556, PAGE 1545

Bean, Whitaker, Lutz & Kareh, Inc. (LB 4919)

CIVIL ENGINEERS - SURVEYORS AND MAPPERS - PLANNERS
13041 MCGREGOR BOULEVARD, FORT MYERS, FLORIDA 33919-5910 (239) 481-1331

| | | | | | |
|---------------|-------------|----------|----------|---------|------------------|
| CD41188_2.DWG | | | | | |
| DATE | PROJECT NO. | DRAWN BY | SCALE | SHEET | FILE NO. (S-T-R) |
| 11-16-10 | 41188 | CNA | 1"= 120' | 2 OF 24 | 18-45-26 |

EXHIBIT "D" TO CONDOMINIUM DECLARATION OF
SANTA LUZ,
A CONDOMINIUM
 LYING IN
 SECTION 18, TOWNSHIP 45 SOUTH, RANGE 26 EAST
 LEE COUNTY, FLORIDA



LEGEND
 D.E. = DRAINAGE EASEMENT
 U.E. = UTILITY EASEMENT
 G.S.D.D.E. = GATEWAY SERVICES DISTRICT DRAINAGE EASEMENTS

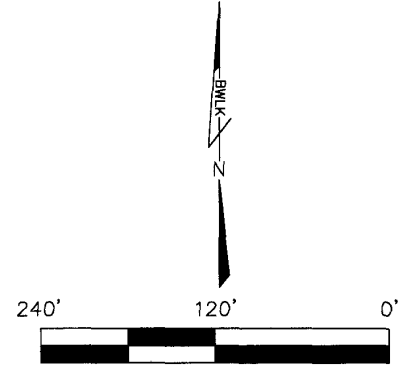
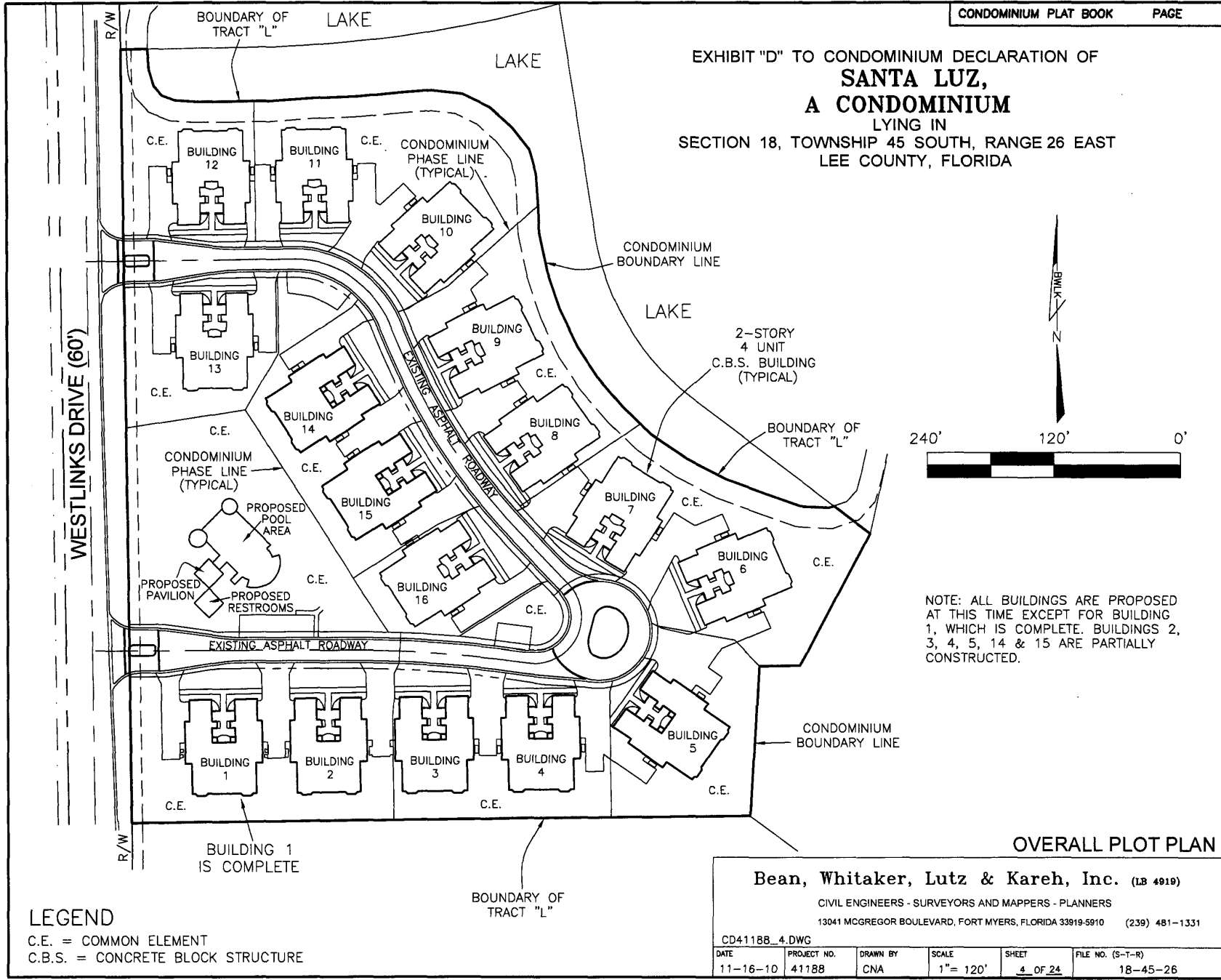
UTILITY EASEMENTS

Bean, Whitaker, Lutz & Kareh, Inc. (LB 4919)
 CIVIL ENGINEERS - SURVEYORS AND MAPPERS - PLANNERS
 13041 MCGREGOR BOULEVARD, FORT MYERS, FLORIDA 33919-5910 (239) 481-1331

CD41188_3.DWG

| | | | | | |
|----------|-------------|----------|-----------|---------|------------------|
| DATE | PROJECT NO. | DRAWN BY | SCALE | SHEET | FILE NO. (S-T-R) |
| 11-16-10 | 41188 | CNA | 1" = 120' | 3 OF 24 | 18-45-26 |

EXHIBIT "D" TO CONDOMINIUM DECLARATION OF
SANTA LUZ,
A CONDOMINIUM
 LYING IN
 SECTION 18, TOWNSHIP 45 SOUTH, RANGE 26 EAST
 LEE COUNTY, FLORIDA



NOTE: ALL BUILDINGS ARE PROPOSED AT THIS TIME EXCEPT FOR BUILDING 1, WHICH IS COMPLETE. BUILDINGS 2, 3, 4, 5, 14 & 15 ARE PARTIALLY CONSTRUCTED.

OVERALL PLOT PLAN

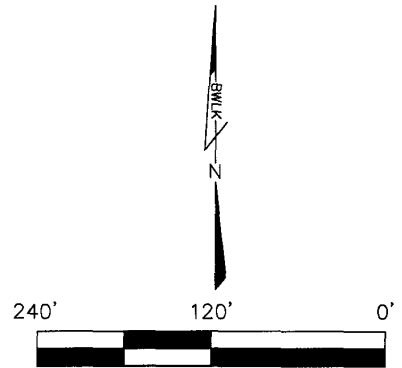
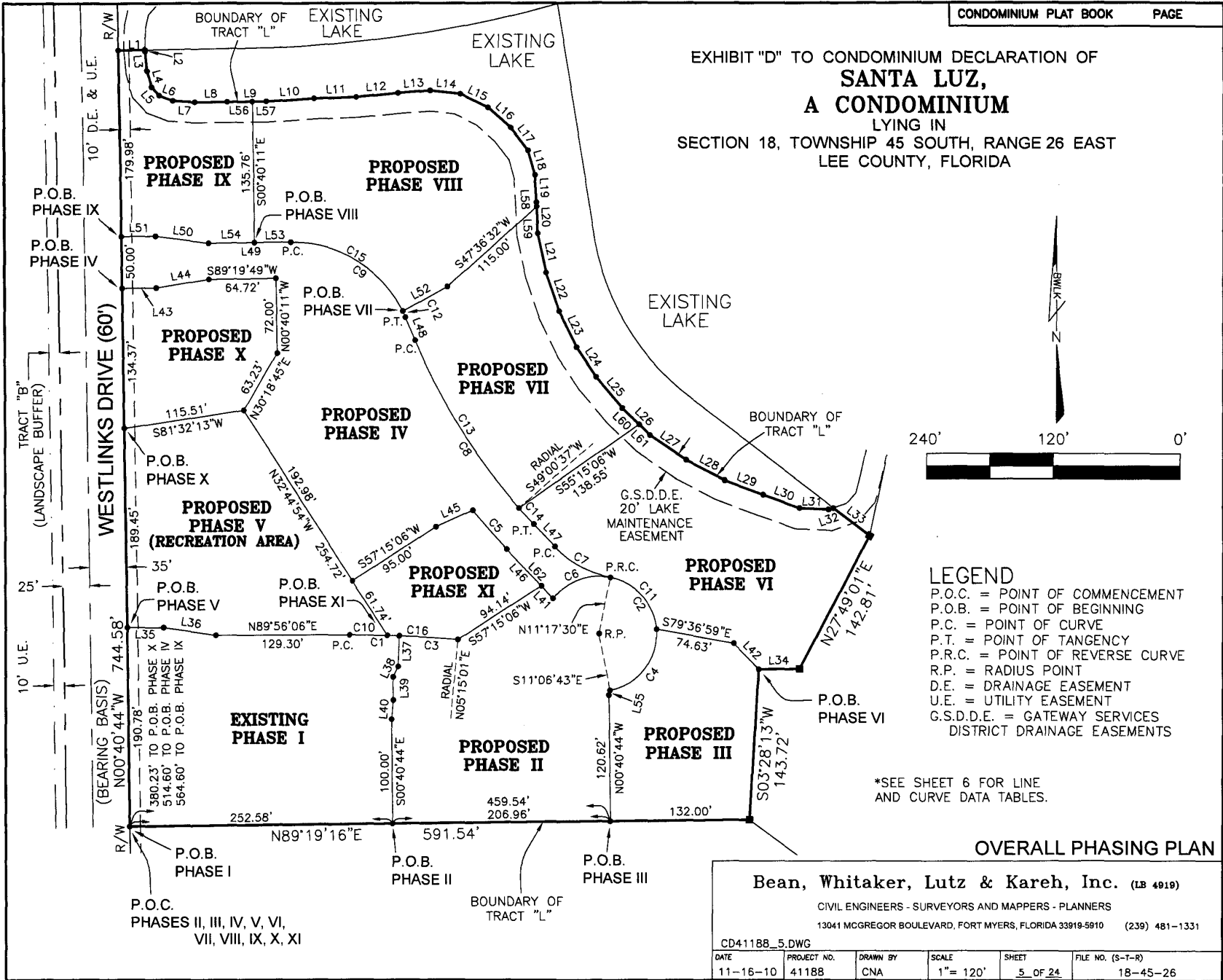
Bean, Whitaker, Lutz & Kareh, Inc. (LB 4919)
 CIVIL ENGINEERS - SURVEYORS AND MAPPERS - PLANNERS
 13041 MCGREGOR BOULEVARD, FORT MYERS, FLORIDA 33919-5910 (239) 481-1331

| | | | | | |
|---------------|-------------|----------|-----------|---------|------------------|
| CD41188_4.DWG | | | | | |
| DATE | PROJECT NO. | DRAWN BY | SCALE | SHEET | FILE NO. (S-T-R) |
| 11-16-10 | 41188 | CNA | 1" = 120' | 4 OF 24 | 18-45-26 |

LEGEND
 C.E. = COMMON ELEMENT
 C.B.S. = CONCRETE BLOCK STRUCTURE

BUILDING 1 IS COMPLETE

EXHIBIT "D" TO CONDOMINIUM DECLARATION OF
SANTA LUZ,
A CONDOMINIUM
 LYING IN
 SECTION 18, TOWNSHIP 45 SOUTH, RANGE 26 EAST
 LEE COUNTY, FLORIDA



- LEGEND**
- P.O.C. = POINT OF COMMENCEMENT
 - P.O.B. = POINT OF BEGINNING
 - P.C. = POINT OF CURVE
 - P.T. = POINT OF TANGENCY
 - P.R.C. = POINT OF REVERSE CURVE
 - R.P. = RADIUS POINT
 - D.E. = DRAINAGE EASEMENT
 - U.E. = UTILITY EASEMENT
 - G.S.D.D.E. = GATEWAY SERVICES DISTRICT DRAINAGE EASEMENTS

*SEE SHEET 6 FOR LINE AND CURVE DATA TABLES.

OVERALL PHASING PLAN

Bean, Whitaker, Lutz & Kareh, Inc. (LB 4919)
 CIVIL ENGINEERS - SURVEYORS AND MAPPERS - PLANNERS
 13041 MCGREGOR BOULEVARD, FORT MYERS, FLORIDA 33919-5910 (239) 481-1331

| | | | | | |
|----------|-------------|----------|-----------|---------|------------------|
| DATE | PROJECT NO. | DRAWN BY | SCALE | SHEET | FILE NO. (S-T-R) |
| 11-16-10 | 41188 | CNA | 1" = 120' | 5 OF 24 | 18-45-26 |

CD41188_5.DWG

EXHIBIT "D" TO CONDOMINIUM DECLARATION OF
SANTA LUZ,
A CONDOMINIUM
 LYING IN
 SECTION 18, TOWNSHIP 45 SOUTH, RANGE 26 EAST
 LEE COUNTY, FLORIDA

CURVE TABLE

| CURVE | RADIUS | DELTA ANGLE | ARC LENGTH | CHORD LENGTH | CHORD BEARING |
|-------|----------|-------------|------------|--------------|---------------|
| C1 | 1117.50' | 02°26'28" | 47.61' | 47.61' | S88°50'40"E |
| C2 | 54.75' | 221°11'12" | 211.36' | 102.50' | N31°42'19"W |
| C3 | 1117.50' | 02°52'26" | 56.06' | 56.05' | N86°11'13"W |
| C4 | 54.75' | 83°32'58" | 79.84' | 72.95' | N37°06'48"E |
| C5 | 617.50' | 04°34'31" | 49.31' | 49.30' | N40°45'23"W |
| C6 | 54.75' | 63°35'25" | 60.76' | 57.69' | S69°29'48"W |
| C7 | 97.50' | 35°39'51" | 60.69' | 59.71' | S60°52'35"E |
| C8 | 582.50' | 20°37'39" | 209.71' | 208.58' | S32°43'49"E |
| C9 | 117.50' | 68°15'12" | 139.97' | 131.84' | S56°32'36"E |
| C10 | 1117.50' | 01°51'16" | 36.17' | 36.17' | S89°08'16"E |
| C11 | 54.75' | 74°02'48" | 70.76' | 65.93' | S41°41'06"E |
| C12 | 117.50' | 03°10'19" | 6.50' | 6.50' | S24°00'09"E |
| C13 | 582.50' | 18°34'23" | 188.82' | 188.00' | N31°42'11"W |
| C14 | 582.50' | 02°03'16" | 20.89' | 20.89' | S42°01'01"E |
| C15 | 117.50' | 65°04'53" | 133.47' | 126.41' | S58°07'45"E |
| C16 | 1117.50' | 03°27'38" | 67.50' | 67.49' | S86°28'48"E |

UNIT NUMBERING SCHEME

| BUILDING# | LL | UL | LR | UR |
|-----------|---------|---------|---------|---------|
| 1 | B1-201 | B1-202 | B1-101 | B1-102 |
| 2 | B2-201 | B2-202 | B2-101 | B2-102 |
| 3 | B3-201 | B3-202 | B3-101 | B3-102 |
| 4 | B4-201 | B4-202 | B4-101 | B4-102 |
| 5 | B5-201 | B5-202 | B5-101 | B5-102 |
| 6 | B6-201 | B6-202 | B6-101 | B6-102 |
| 7 | B7-201 | B7-202 | B7-101 | B7-102 |
| 8 | B8-201 | B8-202 | B8-101 | B8-102 |
| 9 | B9-201 | B9-202 | B9-101 | B9-102 |
| 10 | B10-201 | B10-202 | B10-101 | B10-102 |
| 11 | B11-201 | B11-202 | B11-101 | B11-102 |
| 12 | B12-201 | B12-202 | B12-101 | B12-102 |
| 13 | B13-201 | B13-202 | B13-101 | B13-102 |
| 14 | B14-201 | B14-202 | B14-101 | B14-102 |
| 15 | B15-201 | B15-202 | B15-101 | B15-102 |
| 16 | B16-201 | B16-202 | B16-101 | B16-102 |

KEY: LL= LOWER LEFT UL= UPPER LEFT LR= LOWER RIGHT UR= UPPER RIGHT
 (AS VIEWED FROM THE DRIVEWAY OF EACH BUILDING)

LINE TABLE

| LINE | BEARING | DISTANCE | LINE | BEARING | DISTANCE |
|------|-------------|----------|------|-------------|----------|
| L1 | N89°19'16"E | 25.43' | L32 | S70°59'38"W | 4.78' |
| L2 | S00°51'18"W | 1.58' | L33 | N52°16'53"W | 43.57' |
| L3 | S04°55'05"E | 19.01' | L34 | N89°19'16"E | 38.73' |
| L4 | S15°33'39"E | 16.21' | L35 | N89°56'06"E | 34.33' |
| L5 | S41°16'53"E | 10.95' | L36 | S81°32'03"E | 50.56' |
| L6 | S67°44'29"E | 13.66' | L37 | S02°22'34"W | 29.41' |
| L7 | S86°01'04"E | 20.81' | L38 | S26°34'02"W | 10.89' |
| L8 | N89°37'01"E | 31.04' | L39 | S00°40'44"E | 21.96' |
| L9 | N89°25'56"E | 37.84' | L40 | S05°28'16"W | 18.56' |
| L10 | S86°19'38"W | 46.15' | L41 | N43°02'39"W | 16.53' |
| L11 | S88°10'27"W | 41.00' | L42 | S43°36'15"E | 34.14' |
| L12 | S84°11'23"W | 39.96' | L43 | S89°19'49"W | 32.30' |
| L13 | S85°30'15"W | 30.66' | L44 | S80°47'58"W | 50.56' |
| L14 | N83°07'54"W | 28.98' | L45 | S66°04'23"W | 38.62' |
| L15 | N63°16'53"W | 29.13' | L46 | N43°02'39"W | 47.70' |
| L16 | N47°38'11"W | 29.00' | L47 | S43°02'39"E | 29.49' |
| L17 | N36°45'50"W | 27.58' | L48 | S22°25'00"E | 24.13' |
| L18 | N15°13'56"W | 24.44' | L49 | N89°19'49"E | 79.43' |
| L19 | N03°11'36"W | 26.33' | L50 | S82°08'21"E | 50.56' |
| L20 | N02°27'01"W | 30.04' | L51 | N89°19'49"E | 32.31' |
| L21 | N11°39'05"W | 38.83' | L52 | S61°25'31"W | 48.73' |
| L22 | N18°01'32"W | 38.91' | L53 | N89°19'49"E | 34.98' |
| L23 | N25°20'49"W | 38.48' | L54 | S89°19'49"W | 44.45' |
| L24 | N32°41'22"W | 34.17' | L55 | N14°41'33"E | 4.56' |
| L25 | N39°46'10"W | 38.75' | L56 | N89°25'56"E | 24.34' |
| L26 | N45°34'28"W | 36.64' | L57 | S89°25'56"W | 13.50' |
| L27 | N55°14'26"W | 41.95' | L58 | N02°27'01"W | 4.03' |
| L28 | N62°10'15"W | 41.13' | L59 | N02°27'01"W | 26.01' |
| L29 | N69°37'57"W | 39.03' | L60 | N45°34'28"W | 22.47' |
| L30 | N70°00'46"W | 36.79' | L61 | N45°34'28"W | 14.17' |
| L31 | N86°57'43"W | 27.54' | L62 | N43°02'39"W | 64.22' |

PHASE AREA TABLE

| | | |
|--------------|----------------|--------------|
| PHASE I | = 46,722 S.F. | = 1.07 ACRES |
| PHASE II | = 45,068 S.F. | = 1.03 ACRES |
| PHASE III | = 22,061 S.F. | = 0.51 ACRES |
| PHASE IV | = 54,005 S.F. | = 1.24 ACRES |
| PHASE V | = 37,487 S.F. | = 0.86 ACRES |
| PHASE VI | = 40,140 S.F. | = 0.92 ACRES |
| PHASE VII | = 30,496 S.F. | = 0.70 ACRES |
| PHASE VIII | = 41,032 S.F. | = 0.94 ACRES |
| PHASE IX | = 18,412 S.F. | = 0.42 ACRES |
| PHASE X | = 18,138 S.F. | = 0.42 ACRES |
| PHASE XI | = 12,990 S.F. | = 0.30 ACRES |
| TOTAL PARCEL | = 366,551 S.F. | = 8.41 ACRES |

BUILDING UNIT TABLE

| PHASE | BUILDING # | UNITS |
|-------------|------------|-------|
| I | 1 & 2 | 8 |
| II | 3 & 4 | 8 |
| III | 5 | 4 |
| IV | 14 & 15 | 8 |
| V | REC AREA | 0 |
| VI | 6 & 7 | 8 |
| VII | 8 & 9 | 8 |
| VIII | 10 & 11 | 8 |
| IX | 12 | 4 |
| X | 13 | 4 |
| XI | 16 | 4 |
| TOTAL UNITS | | 64 |

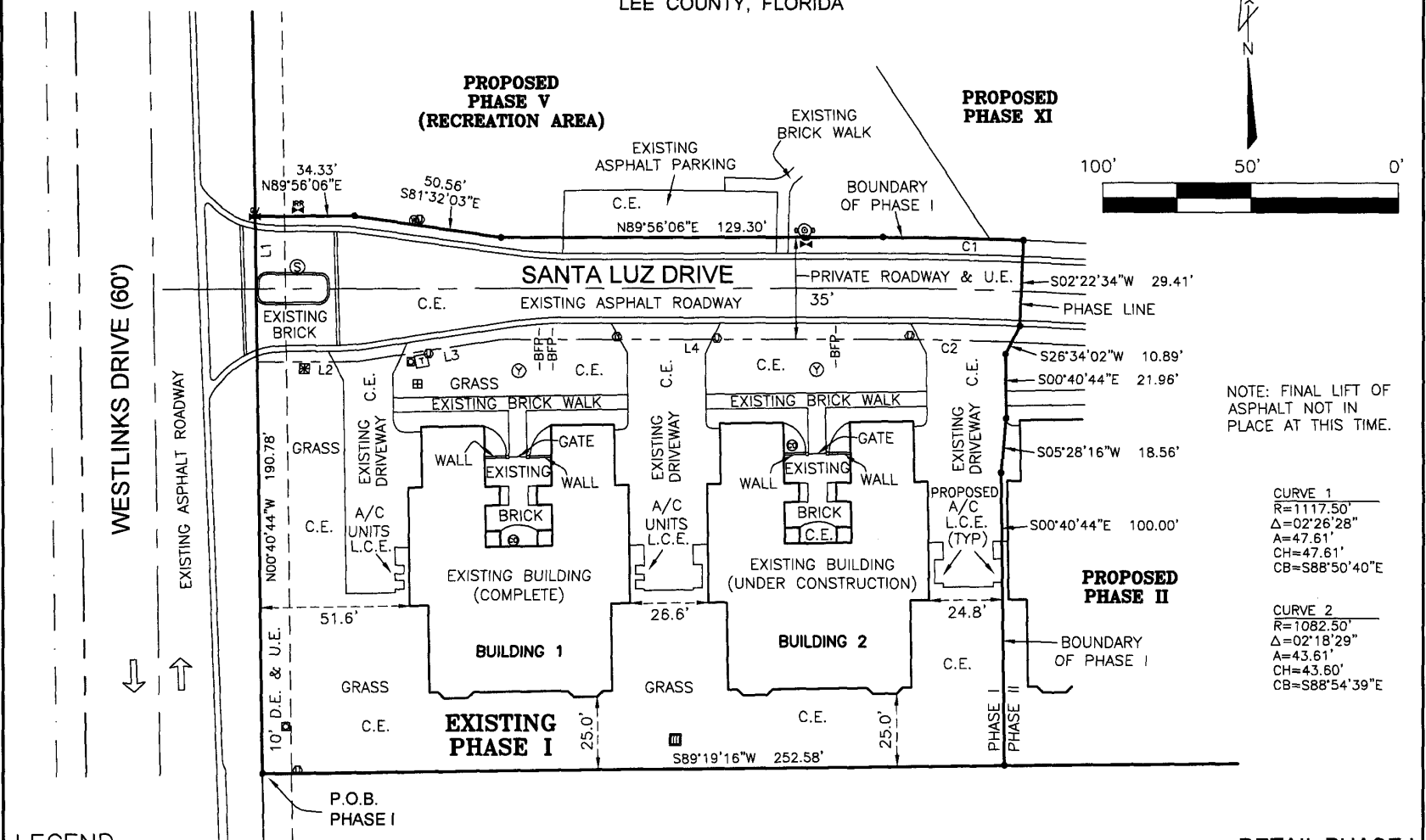
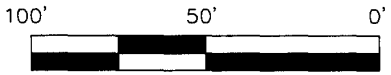
OVERALL PHASING PLAN - TABLES

Bean, Whitaker, Lutz & Kareh, Inc. (LB 4919)
 CIVIL ENGINEERS - SURVEYORS AND MAPPERS - PLANNERS
 13041 MCGREGOR BOULEVARD, FORT MYERS, FLORIDA 33919-5910 (239) 481-1331
 CD41188_6.DWG

| DATE | PROJECT NO. | DRAWN BY | SCALE | SHEET | FILE NO. (S-T-R) |
|----------|-------------|----------|----------|---------|------------------|
| 11-16-10 | 41188 | CNA | 1" = N/A | 6 OF 24 | 18-45-26 |

EXHIBIT "D" TO CONDOMINIUM DECLARATION OF
SANTA LUZ,
A CONDOMINIUM
 LYING IN
 SECTION 18, TOWNSHIP 45 SOUTH, RANGE 26 EAST
 LEE COUNTY, FLORIDA

CONDOMINIUM PLAT BOOK PAGE



NOTE: FINAL LIFT OF ASPHALT NOT IN PLACE AT THIS TIME.

CURVE 1
 R=1117.50'
 Δ=02°26'28"
 A=47.61'
 CH=47.61'
 CB=S88°50'40"E

CURVE 2
 R=1082.50'
 Δ=02°18'29"
 A=43.61'
 CH=43.60'
 CB=S88°54'39"E

LEGEND
 A/C = AIR CONDITIONER
 P.O.B. = POINT OF BEGINNING
 (TYP) = TYPICAL
 C.E. = COMMON ELEMENT
 L.C.E. = LIMITED COMMON ELEMENT
 U.E. = UTILITY EASEMENT
 D.E. = DRAINAGE EASEMENT
 G.S.D.D.E. = GATEWAY SERVICES DISTRICT DRAINAGE EASEMENTS

| LINE | BEARING | DISTANCE |
|------|-------------|----------|
| L1 | N00°40'44"W | 190.78' |
| L2 | N89°56'06"E | 33.79' |
| L3 | N81°24'15"E | 50.56' |
| L4 | N89°56'06"E | 129.30' |

Bean, Whitaker, Lutz & Kareh, Inc. (LB 4919)
 CIVIL ENGINEERS - SURVEYORS AND MAPPERS - PLANNERS
 13041 MCGREGOR BOULEVARD, FORT MYERS, FLORIDA 33919-5910 (239) 481-1331

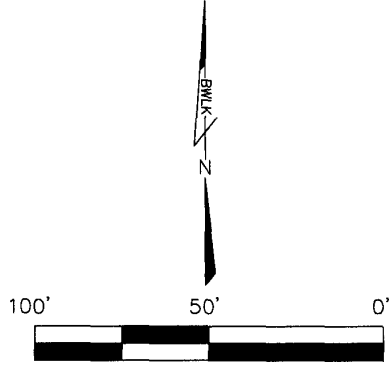
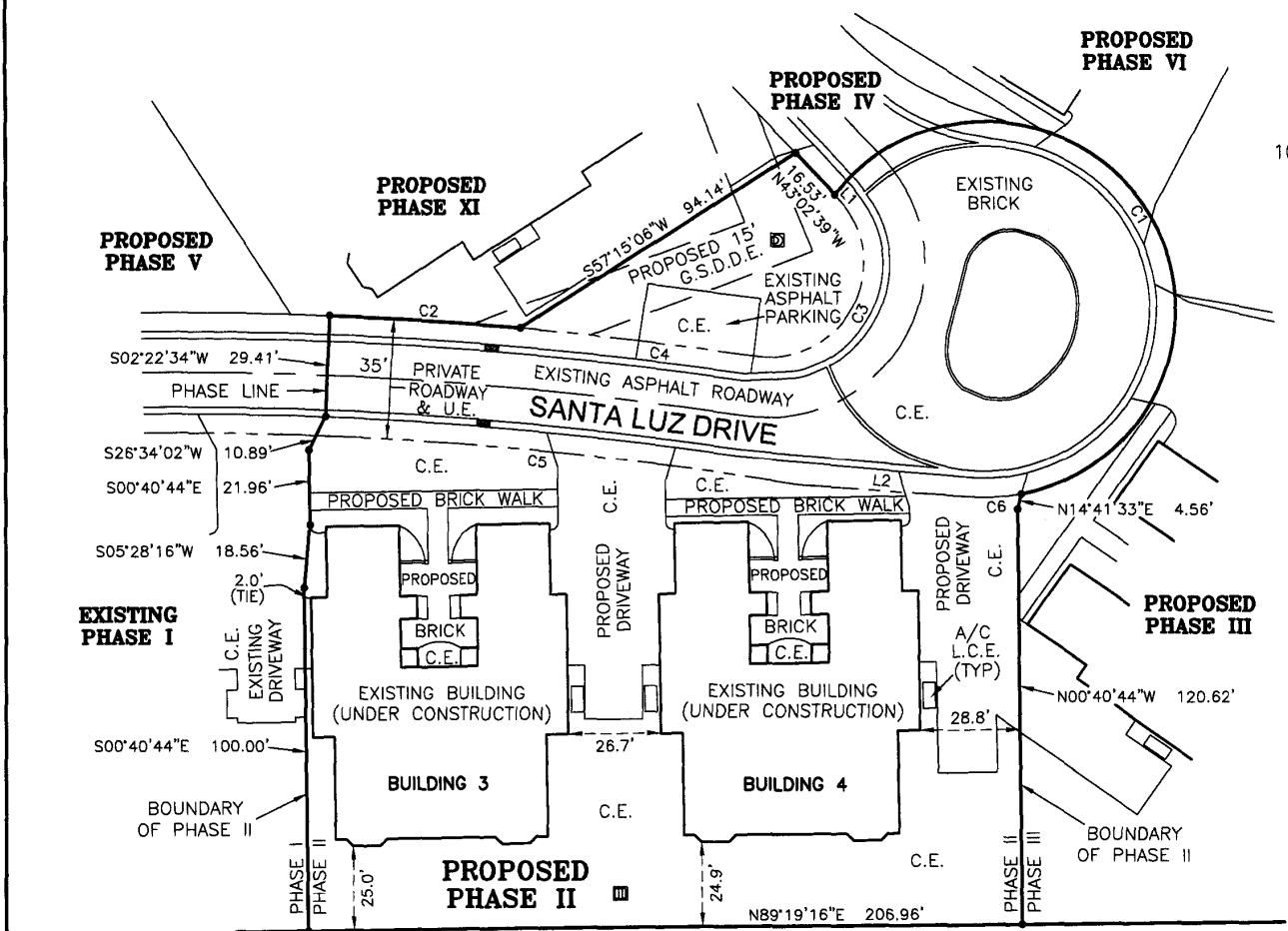
CD41188_7.DWG

| | | | | | |
|----------|-------------|----------|----------|---------|------------------|
| DATE | PROJECT NO. | DRAWN BY | SCALE | SHEET | FILE NO. (S-T-R) |
| 11-16-10 | 41188 | CNA | 1" = 50' | 7 OF 24 | 18-45-26 |

DETAIL PHASE I

EXHIBIT "D" TO CONDOMINIUM DECLARATION OF
SANTA LUZ,
A CONDOMINIUM
 LYING IN
 SECTION 18, TOWNSHIP 45 SOUTH, RANGE 26 EAST
 LEE COUNTY, FLORIDA

CONDOMINIUM PLAT BOOK PAGE



| | |
|--|--|
| CURVE 1 R=54.75' Δ=221°11'12" A=211.36' CH=102.50' CB=S31°42'19"E | CURVE 2 R=1117.50' Δ=02°52'26" A=56.06' CH=56.05' CB=S86°11'13"E |
| CURVE 3 R=27.50' Δ=141°46'08" A=68.04' CH=51.97' CB=S27°50'25"W | CURVE 4 R=1117.50' Δ=03°28'28" A=67.77' CH=67.76' CB=N83°00'45"W |
| CURVE 5 R=1082.50' Δ=07°28'41" A=141.28' CH=141.18' CB=S84°01'04"E | CURVE 6 R=54.75' Δ=15°02'26" A=14.37' CH=14.33' CB=N86°24'30"E |

| LINE | BEARING | DISTANCE |
|------|-------------|----------|
| L1 | S43°02'39"E | 1.56' |
| L2 | S86°04'17"E | 49.62' |

LEGEND
 A/C = AIR CONDITIONER
 P.O.B. = POINT OF BEGINNING
 (TYP) = TYPICAL
 C.E. = COMMON ELEMENT
 L.C.E. = LIMITED COMMON ELEMENT
 U.E. = UTILITY EASEMENT
 D.E. = DRAINAGE EASEMENT
 G.S.D.D.E. = GATEWAY SERVICES DISTRICT DRAINAGE EASEMENTS

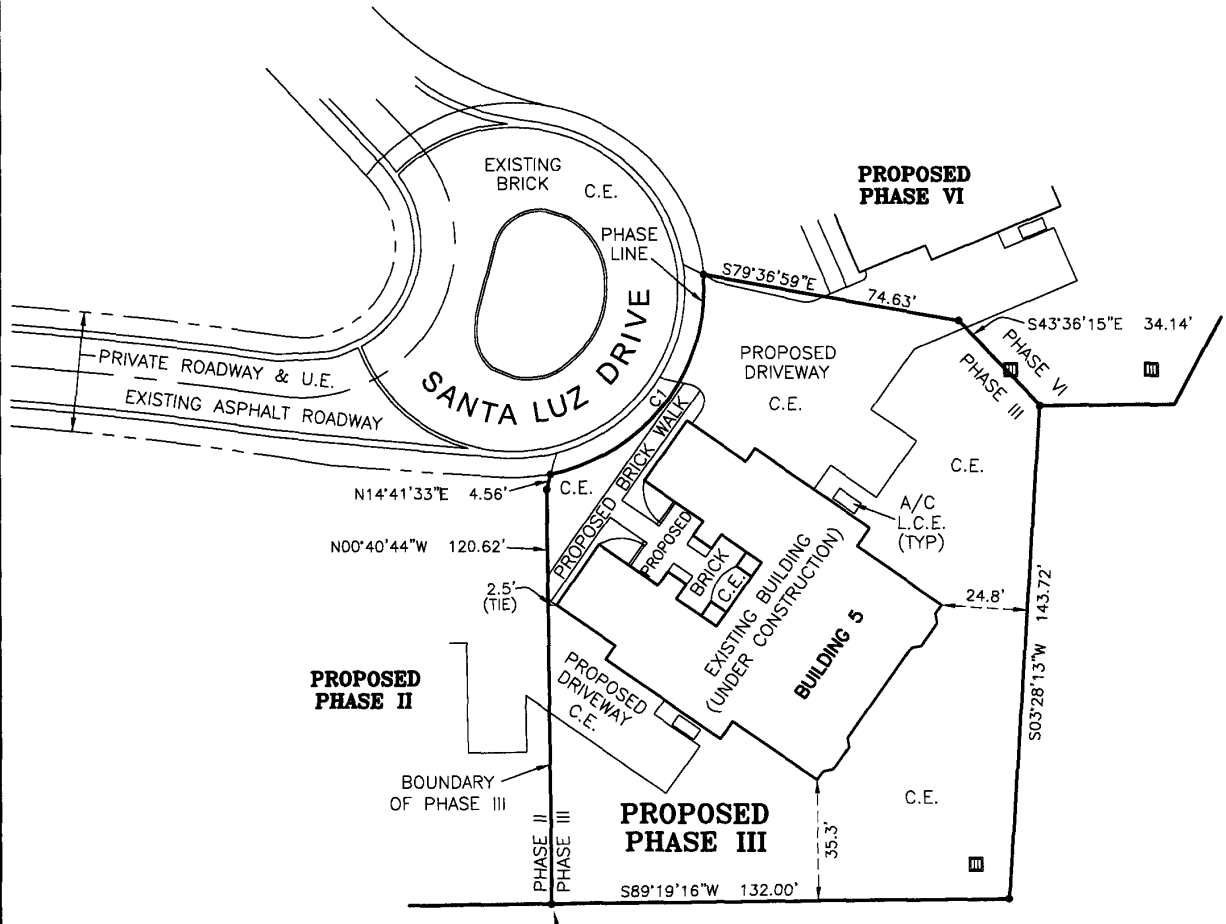
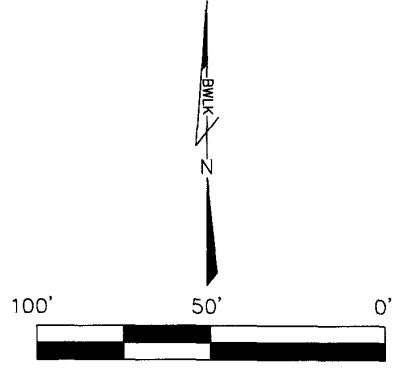
DETAIL PHASE II

Bean, Whitaker, Lutz & Kareh, Inc. (LB 4919)
 CIVIL ENGINEERS - SURVEYORS AND MAPPERS - PLANNERS
 13041 MCGREGOR BOULEVARD, FORT MYERS, FLORIDA 33919-5910 (239) 481-1331

CD41188_B.DWG

| DATE | PROJECT NO. | DRAWN BY | SCALE | SHEET | FILE NO. (S-T-R) |
|----------|-------------|----------|---------|---------|------------------|
| 11-16-10 | 41188 | CNA | 1"= 50' | 8 OF 24 | 18-45-26 |

EXHIBIT "D" TO CONDOMINIUM DECLARATION OF
SANTA LUZ,
A CONDOMINIUM
 LYING IN
 SECTION 18, TOWNSHIP 45 SOUTH, RANGE 26 EAST
 LEE COUNTY, FLORIDA



CURVE 1
 R=54.75'
 Δ=83°32'58"
 A=79.84'
 CH=72.95'
 CB=N37°06'48"E

- LEGEND**
- A/C = AIR CONDITIONER
 - P.O.B. = POINT OF BEGINNING
 - (TYP) = TYPICAL
 - C.E. = COMMON ELEMENT
 - L.C.E. = LIMITED COMMON ELEMENT
 - U.E. = UTILITY EASEMENT
 - D.E. = DRAINAGE EASEMENT
 - G.S.D.D.E. = GATEWAY SERVICES DISTRICT DRAINAGE EASEMENTS

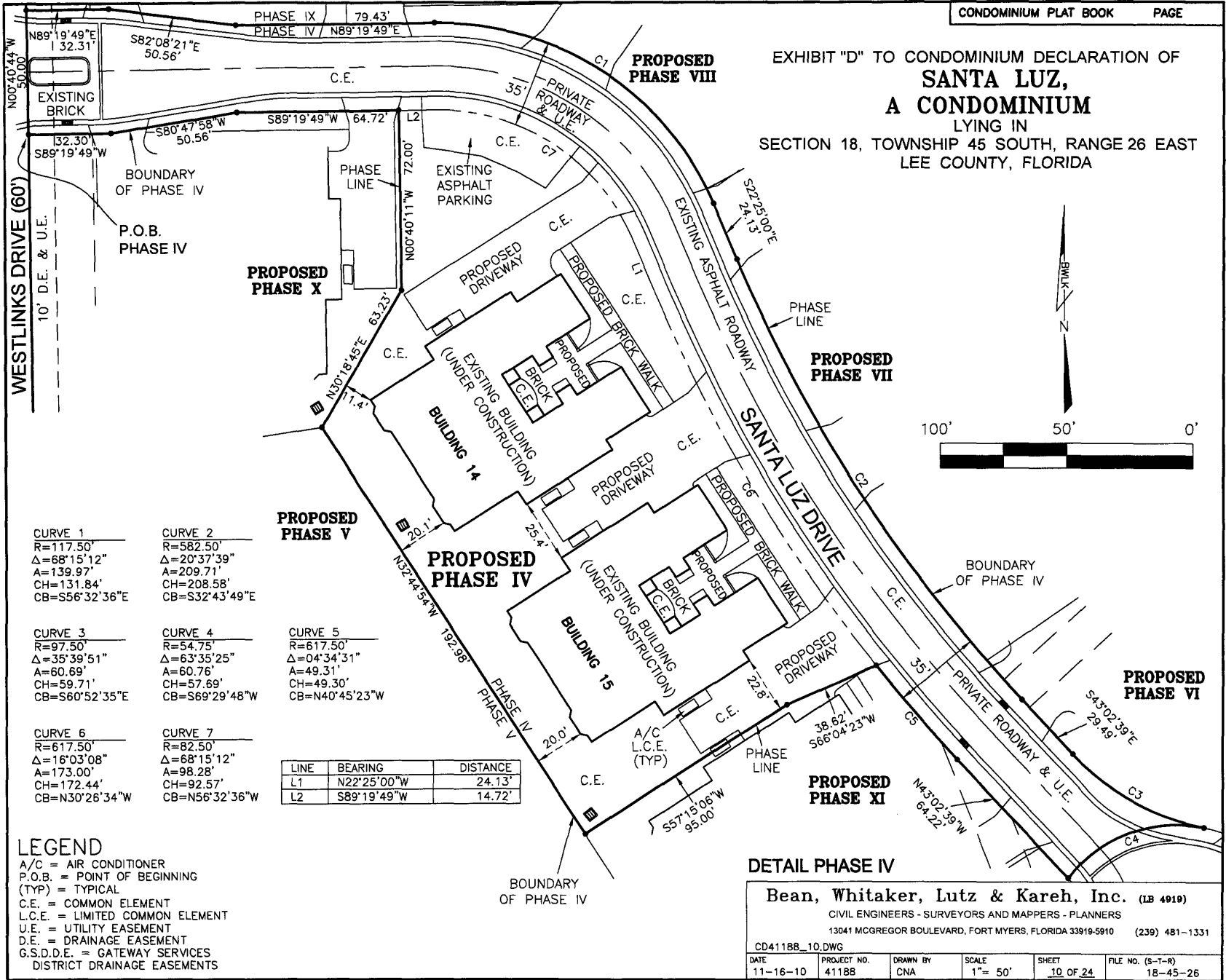
DETAIL PHASE III

Bean, Whitaker, Lutz & Kareh, Inc. (LB 4919)
 CIVIL ENGINEERS - SURVEYORS AND MAPPERS - PLANNERS
 13041 MCGREGOR BOULEVARD, FORT MYERS, FLORIDA 33819-5910 (239) 481-1331

CD41188_9.DWG

| DATE | PROJECT NO. | DRAWN BY | SCALE | SHEET | FILE NO. (S-T-R) |
|----------|-------------|----------|----------|---------|------------------|
| 11-16-10 | 41188 | CNA | 1" = 50' | 9 OF 24 | 18-45-26 |

EXHIBIT "D" TO CONDOMINIUM DECLARATION OF
SANTA LUZ,
A CONDOMINIUM
 LYING IN
 SECTION 18, TOWNSHIP 45 SOUTH, RANGE 26 EAST
 LEE COUNTY, FLORIDA



| | | | | |
|---|---|--|--|---|
| CURVE 1 R=117.50' Δ=68°15'12" A=139.97' CH=131.84' CB=S56°32'36"E | CURVE 2 R=582.50' Δ=20°37'39" A=209.71' CH=208.58' CB=S32°43'49"E | CURVE 3 R=97.50' Δ=35°39'51" A=60.69' CH=59.71' CB=S60°52'35"E | CURVE 4 R=54.75' Δ=63°35'25" A=60.76' CH=57.69' CB=S69°29'48"W | CURVE 5 R=617.50' Δ=04°34'31" A=49.31' CH=49.30' CB=N40°45'23"W |
| CURVE 6 R=617.50' Δ=16°03'08" A=173.00' CH=172.44' CB=N30°26'34"W | CURVE 7 R=82.50' Δ=68°15'12" A=98.28' CH=92.57' CB=N56°32'36"W | | | |

| LINE | BEARING | DISTANCE |
|------|-------------|----------|
| L1 | N22°25'00"W | 24.13' |
| L2 | S89°19'49"W | 14.72' |

LEGEND
 A/C = AIR CONDITIONER
 P.O.B. = POINT OF BEGINNING
 (TYP) = TYPICAL
 C.E. = COMMON ELEMENT
 L.C.E. = LIMITED COMMON ELEMENT
 U.E. = UTILITY EASEMENT
 D.E. = DRAINAGE EASEMENT
 G.S.D.D.E. = GATEWAY SERVICES DISTRICT DRAINAGE EASEMENTS

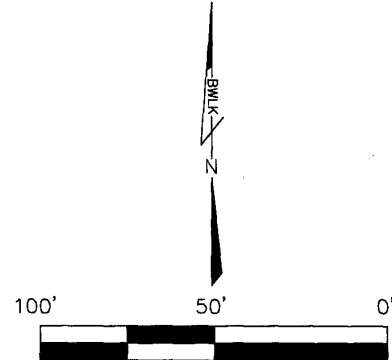
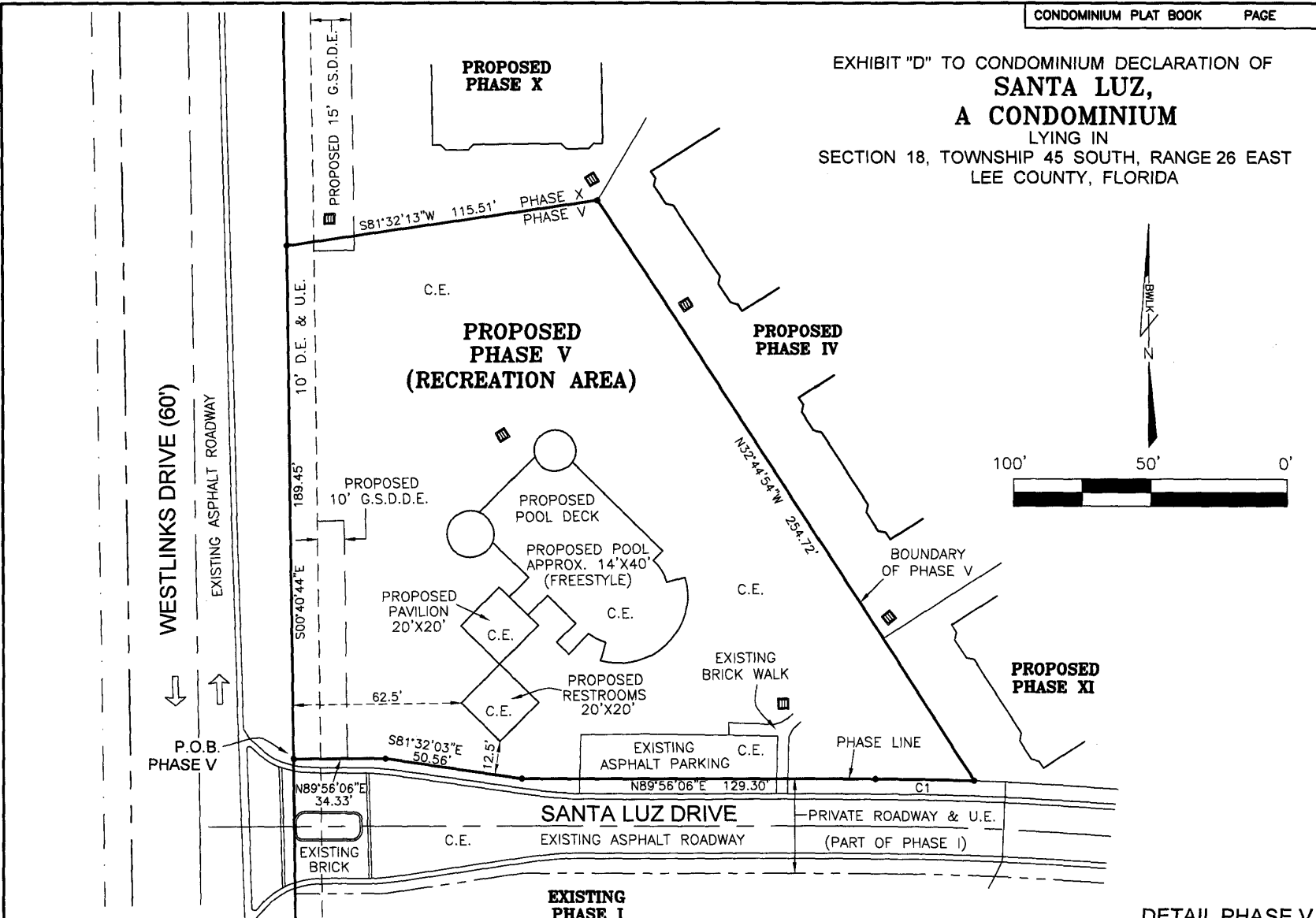
DETAIL PHASE IV

Bean, Whitaker, Lutz & Kareh, Inc. (LB 4919)
 CIVIL ENGINEERS - SURVEYORS AND MAPPERS - PLANNERS
 13041 MCGREGOR BOULEVARD, FORT MYERS, FLORIDA 33919-5910 (239) 481-1331

CD41188_10.DWG

| | | | | | |
|----------|-------------|----------|---------|----------|------------------|
| DATE | PROJECT NO. | DRAWN BY | SCALE | SHEET | FILE NO. (S-T-R) |
| 11-16-10 | 41188 | CNA | 1"= 50' | 10 OF 24 | 18-45-26 |

EXHIBIT "D" TO CONDOMINIUM DECLARATION OF
SANTA LUZ,
A CONDOMINIUM
 LYING IN
 SECTION 18, TOWNSHIP 45 SOUTH, RANGE 26 EAST
 LEE COUNTY, FLORIDA



LEGEND

- P.O.B. = POINT OF BEGINNING
- C.E. = COMMON ELEMENT
- L.C.E. = LIMITED COMMON ELEMENT
- U.E. = UTILITY EASEMENT
- D.E. = DRAINAGE EASEMENT
- G.S.D.D.E. = GATEWAY SERVICES DISTRICT DRAINAGE EASEMENTS
- APPROX. = APPROXIMATELY

CURVE 1
 R=1117.50'
 Δ=01°51'16"
 A=36.17'
 CH=36.17'
 CB=S89°08'16"E

DETAIL PHASE V

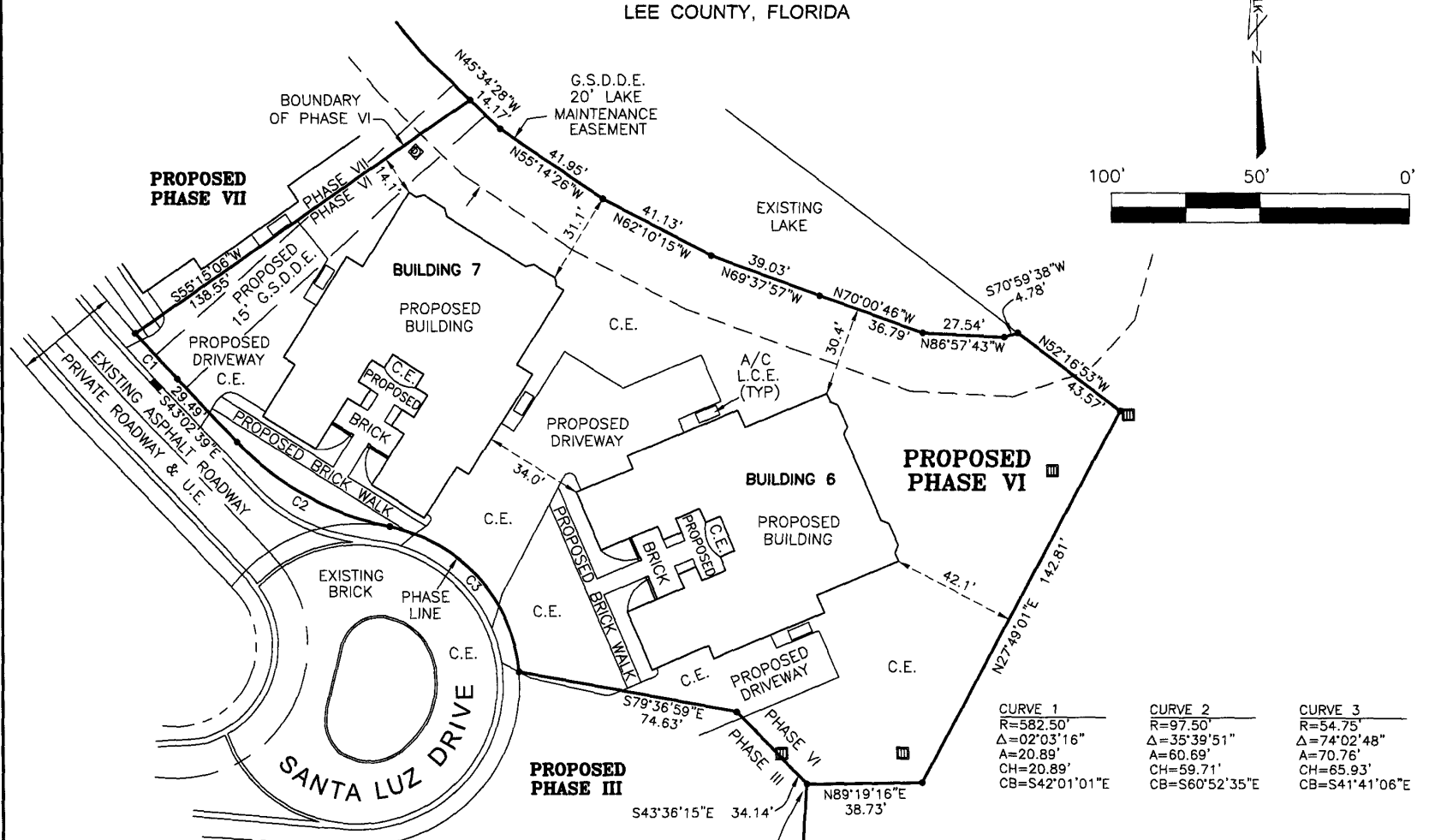
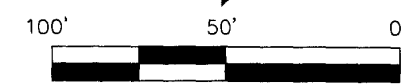
Bean, Whitaker, Lutz & Kareh, Inc. (LB 4919)

CIVIL ENGINEERS - SURVEYORS AND MAPPERS - PLANNERS
 13041 MCGREGOR BOULEVARD, FORT MYERS, FLORIDA 33919-5910 (239) 481-1331

| | | | | | |
|----------------|-------------|----------|----------|----------|------------------|
| CD41188_11.DWG | | | | | |
| DATE | PROJECT NO. | DRAWN BY | SCALE | SHEET | FILE NO. (S-T-R) |
| 11-16-10 | 41188 | CNA | 1" = 50' | 11 OF 24 | 18-45-26 |

EXHIBIT "D" TO CONDOMINIUM DECLARATION OF
SANTA LUZ,
A CONDOMINIUM
 LYING IN
 SECTION 18, TOWNSHIP 45 SOUTH, RANGE 26 EAST
 LEE COUNTY, FLORIDA

CONDOMINIUM PLAT BOOK PAGE



| | | |
|---|--|--|
| CURVE 1 R=582.50' Δ=02°03'16" A=20.89' CH=20.89' CB=S42°01'01"E | CURVE 2 R=97.50' Δ=35°39'51" A=60.69' CH=59.71' CB=S60°52'35"E | CURVE 3 R=54.75' Δ=74°02'48" A=70.76' CH=65.93' CB=S41°41'06"E |
|---|--|--|

LEGEND
 A/C = AIR CONDITIONER
 P.O.B. = POINT OF BEGINNING
 (TYP) = TYPICAL
 C.E. = COMMON ELEMENT
 L.C.E. = LIMITED COMMON ELEMENT
 U.E. = UTILITY EASEMENT
 D.E. = DRAINAGE EASEMENT
 G.S.D.D.E. = GATEWAY SERVICES DISTRICT DRAINAGE EASEMENTS

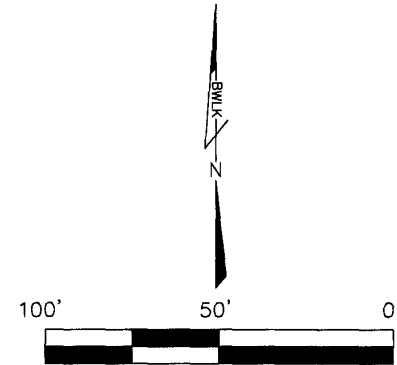
DETAIL PHASE VI

Bean, Whitaker, Lutz & Kareh, Inc. (LB 4919)
 CIVIL ENGINEERS - SURVEYORS AND MAPPERS - PLANNERS
 13041 MCGREGOR BOULEVARD, FORT MYERS, FLORIDA 33919-5910 (239) 481-1331

CD41188_12.DWG

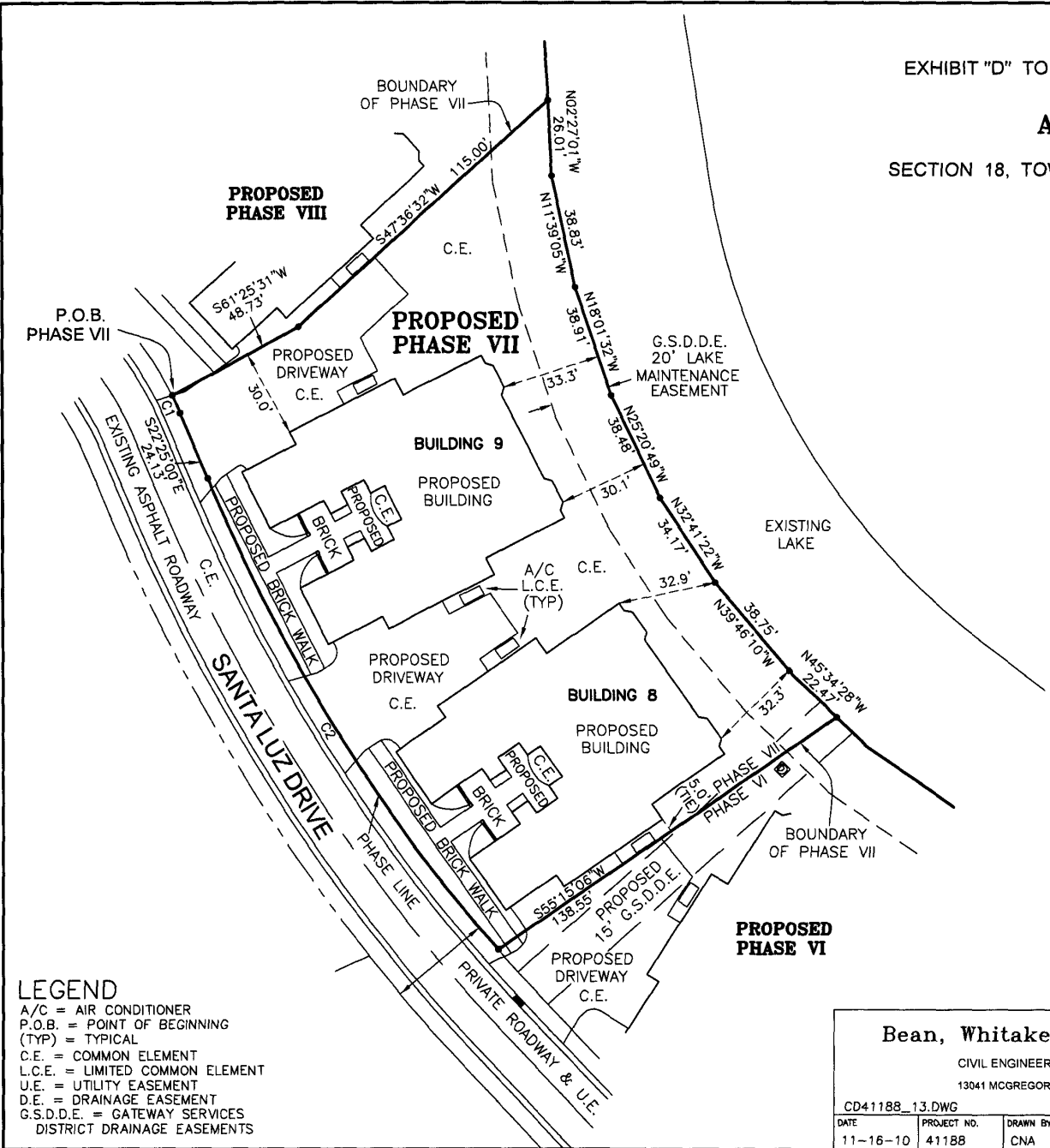
| | | | | | |
|------------------|----------------------|-----------------|-------------------|-------------------|------------------------------|
| DATE 11-16-10 | PROJECT NO. 41188 | DRAWN BY CNA | SCALE 1" = 50' | SHEET 12 OF 24 | FILE NO. (S-T-R) 18-45-26 |
|------------------|----------------------|-----------------|-------------------|-------------------|------------------------------|

EXHIBIT "D" TO CONDOMINIUM DECLARATION OF
SANTA LUZ,
A CONDOMINIUM
 LYING IN
 SECTION 18, TOWNSHIP 45 SOUTH, RANGE 26 EAST
 LEE COUNTY, FLORIDA



| | |
|----------------|----------------|
| CURVE 1 | CURVE 2 |
| R=117.50' | R=582.50' |
| Δ=03°10'19" | Δ=18°34'23" |
| A=6.50' | A=188.82' |
| CH=6.50' | CH=188.00' |
| CB=S24°00'09"E | CB=S31°42'11"E |

LEGEND
 A/C = AIR CONDITIONER
 P.O.B. = POINT OF BEGINNING
 (TYP) = TYPICAL
 C.E. = COMMON ELEMENT
 L.C.E. = LIMITED COMMON ELEMENT
 U.E. = UTILITY EASEMENT
 D.E. = DRAINAGE EASEMENT
 G.S.D.D.E. = GATEWAY SERVICES
 DISTRICT DRAINAGE EASEMENTS



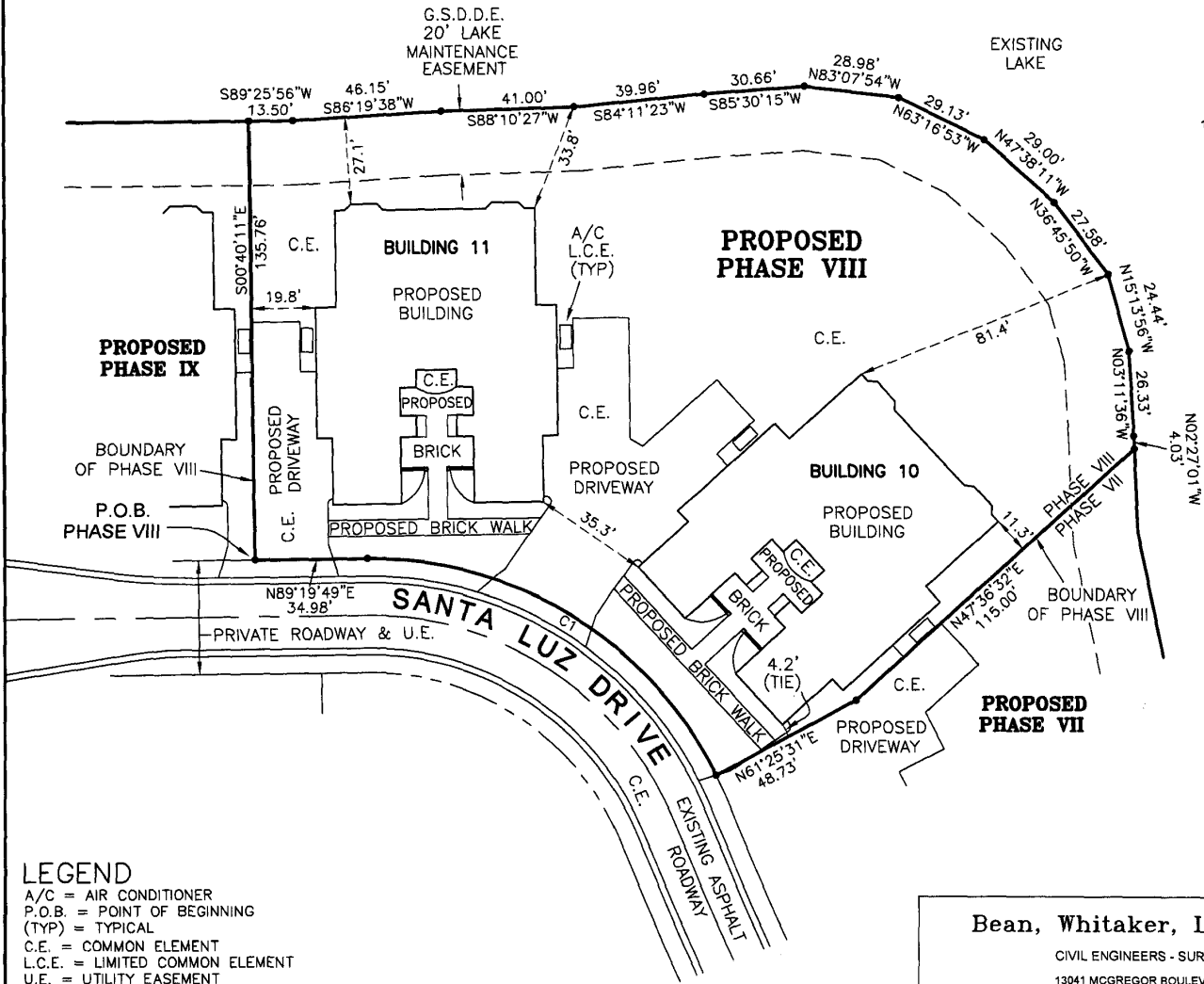
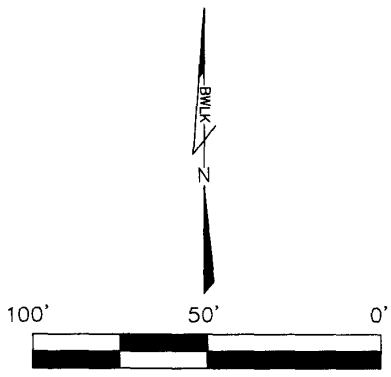
DETAIL PHASE VII

Bean, Whitaker, Lutz & Kareh, Inc. (LS 4919)
 CIVIL ENGINEERS - SURVEYORS AND MAPPERS - PLANNERS
 13041 MCGREGOR BOULEVARD, FORT MYERS, FLORIDA 33919-5910 (239) 481-1331

CD41188_13.DWG

| | | | | | |
|----------|-------------|----------|----------|----------|------------------|
| DATE | PROJECT NO. | DRAWN BY | SCALE | SHEET | FILE NO. (S-T-R) |
| 11-16-10 | 41188 | CNA | 1" = 50' | 13 OF 24 | 18-45-26 |

EXHIBIT "D" TO CONDOMINIUM DECLARATION OF
SANTA LUZ,
A CONDOMINIUM
 LYING IN
 SECTION 18, TOWNSHIP 45 SOUTH, RANGE 26 EAST
 LEE COUNTY, FLORIDA



CURVE 1
 R=117.50'
 Δ=65°04'53"
 A=133.47'
 CH=126.41'
 CB=S58°07'45"E

- LEGEND**
 A/C = AIR CONDITIONER
 P.O.B. = POINT OF BEGINNING
 (TYP) = TYPICAL
 C.E. = COMMON ELEMENT
 L.C.E. = LIMITED COMMON ELEMENT
 U.E. = UTILITY EASEMENT
 D.E. = DRAINAGE EASEMENT
 G.S.D.D.E. = GATEWAY SERVICES
 DISTRICT DRAINAGE EASEMENTS

DETAIL PHASE VIII

Bean, Whitaker, Lutz & Kareh, Inc. (LB 4919)

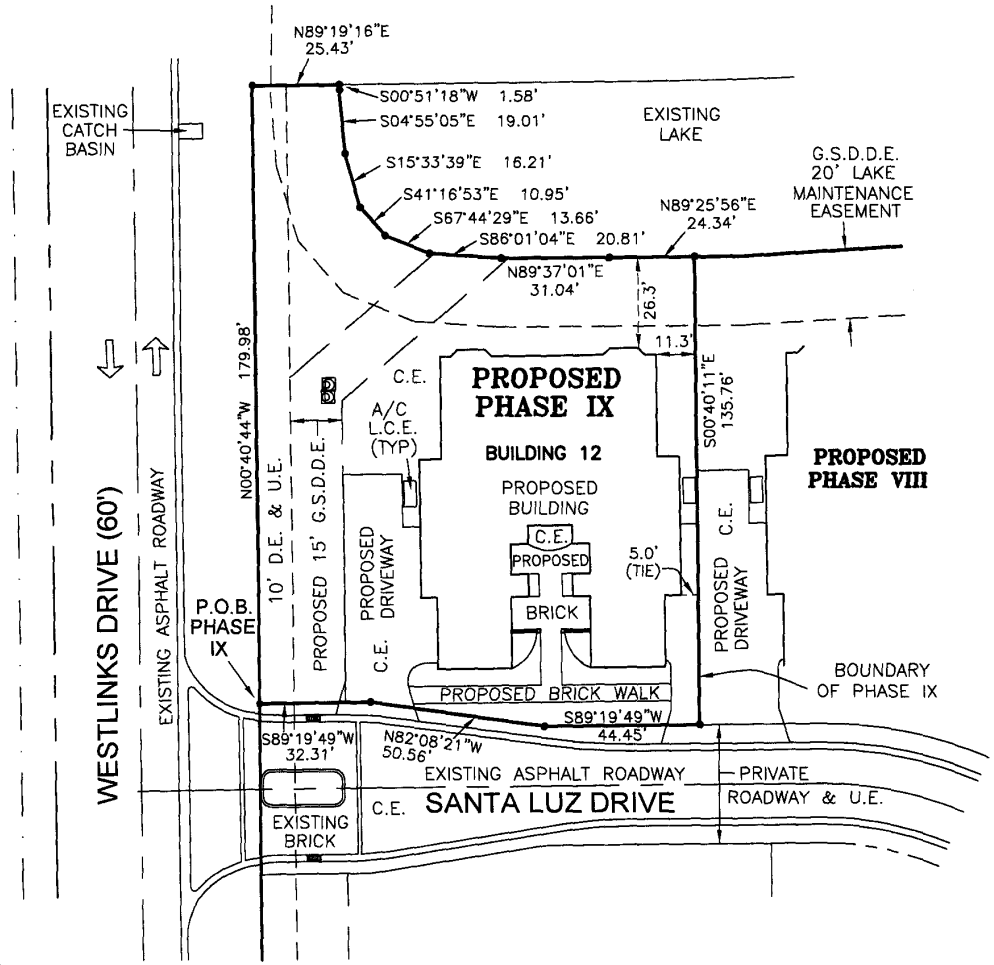
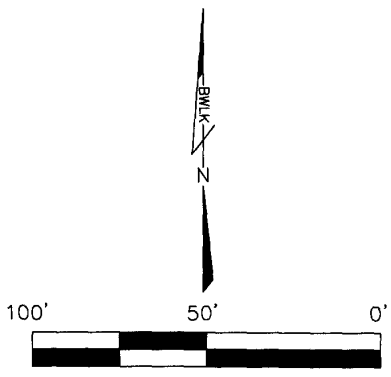
CIVIL ENGINEERS - SURVEYORS AND MAPPERS - PLANNERS
 13041 MCGREGOR BOULEVARD, FORT MYERS, FLORIDA 33919-5910 (239) 481-1331

CD41188_14.DWG

| DATE | PROJECT NO. | DRAWN BY | SCALE | SHEET | FILE NO. (S-T-R) |
|----------|-------------|----------|----------|----------|------------------|
| 11-16-10 | 41188 | CNA | 1" = 50' | 14 OF 24 | 18-45-26 |

EXHIBIT "D" TO CONDOMINIUM DECLARATION OF
SANTA LUZ,
A CONDOMINIUM
 LYING IN
 SECTION 18, TOWNSHIP 45 SOUTH, RANGE 26 EAST
 LEE COUNTY, FLORIDA

CONDOMINIUM PLAT BOOK PAGE



LEGEND
 A/C = AIR CONDITIONER
 P.O.B. = POINT OF BEGINNING
 (TYP) = TYPICAL
 C.E. = COMMON ELEMENT
 L.C.E. = LIMITED COMMON ELEMENT
 U.E. = UTILITY EASEMENT
 D.E. = DRAINAGE EASEMENT
 G.S.D.D.E. = GATEWAY SERVICES DISTRICT DRAINAGE EASEMENTS

DETAIL PHASE IX

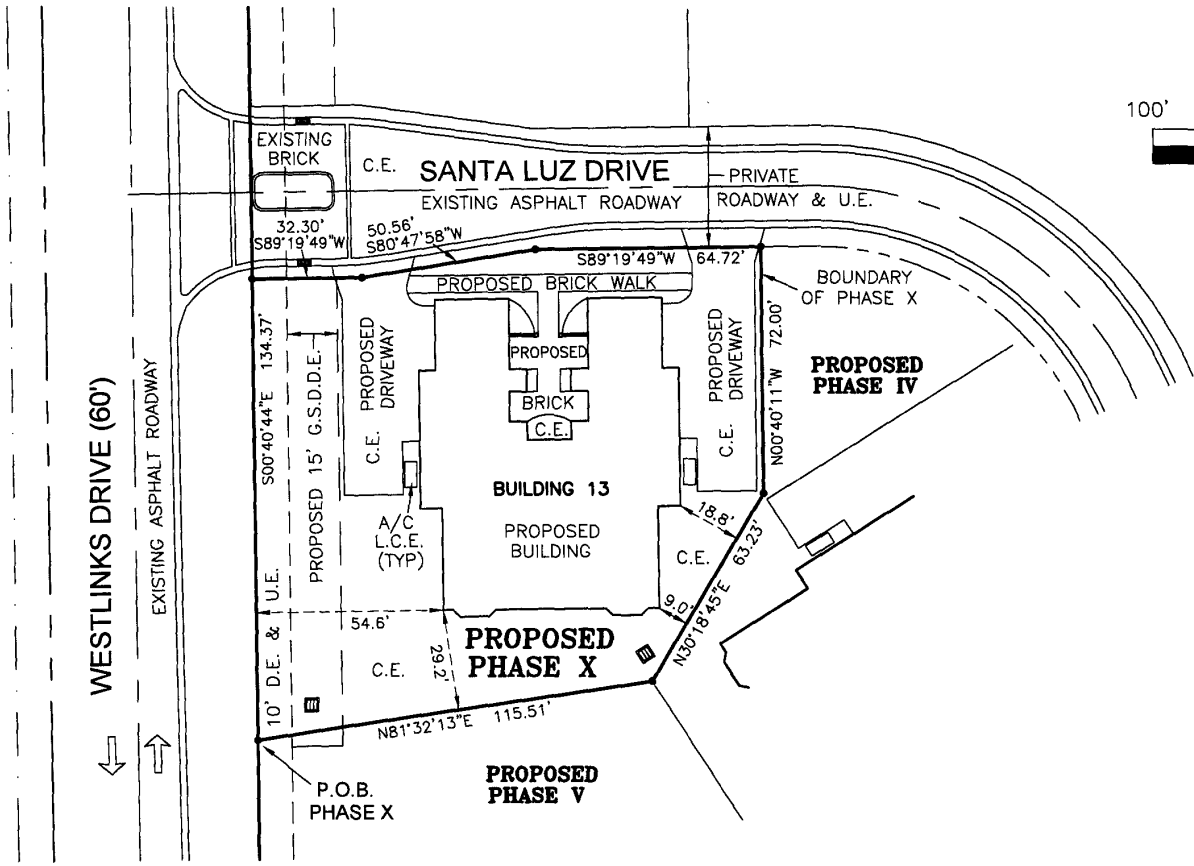
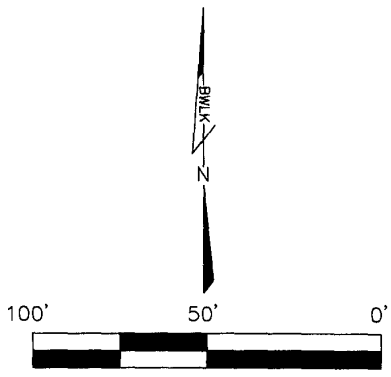
Bean, Whitaker, Lutz & Kareh, Inc. (LS 4819)
 CIVIL ENGINEERS - SURVEYORS AND MAPPERS - PLANNERS
 13041 MCGREGOR BOULEVARD, FORT MYERS, FLORIDA 33919-5910 (239) 481-1331

CD41188_15.DWG

| | | | | | |
|----------|-------------|----------|----------|----------|------------------|
| DATE | PROJECT NO. | DRAWN BY | SCALE | SHEET | FILE NO. (S-T-R) |
| 11-16-10 | 41188 | CNA | 1" = 50' | 15 OF 24 | 18-45-26 |

EXHIBIT "D" TO CONDOMINIUM DECLARATION OF
SANTA LUZ,
A CONDOMINIUM
 LYING IN
 SECTION 18, TOWNSHIP 45 SOUTH, RANGE 26 EAST
 LEE COUNTY, FLORIDA

CONDOMINIUM PLAT BOOK PAGE



LEGEND
 A/C = AIR CONDITIONER
 P.O.B. = POINT OF BEGINNING
 (TYP) = TYPICAL
 C.E. = COMMON ELEMENT
 L.C.E. = LIMITED COMMON ELEMENT
 U.E. = UTILITY EASEMENT
 D.E. = DRAINAGE EASEMENT
 G.S.D.D.E. = GATEWAY SERVICES
 DISTRICT DRAINAGE EASEMENTS

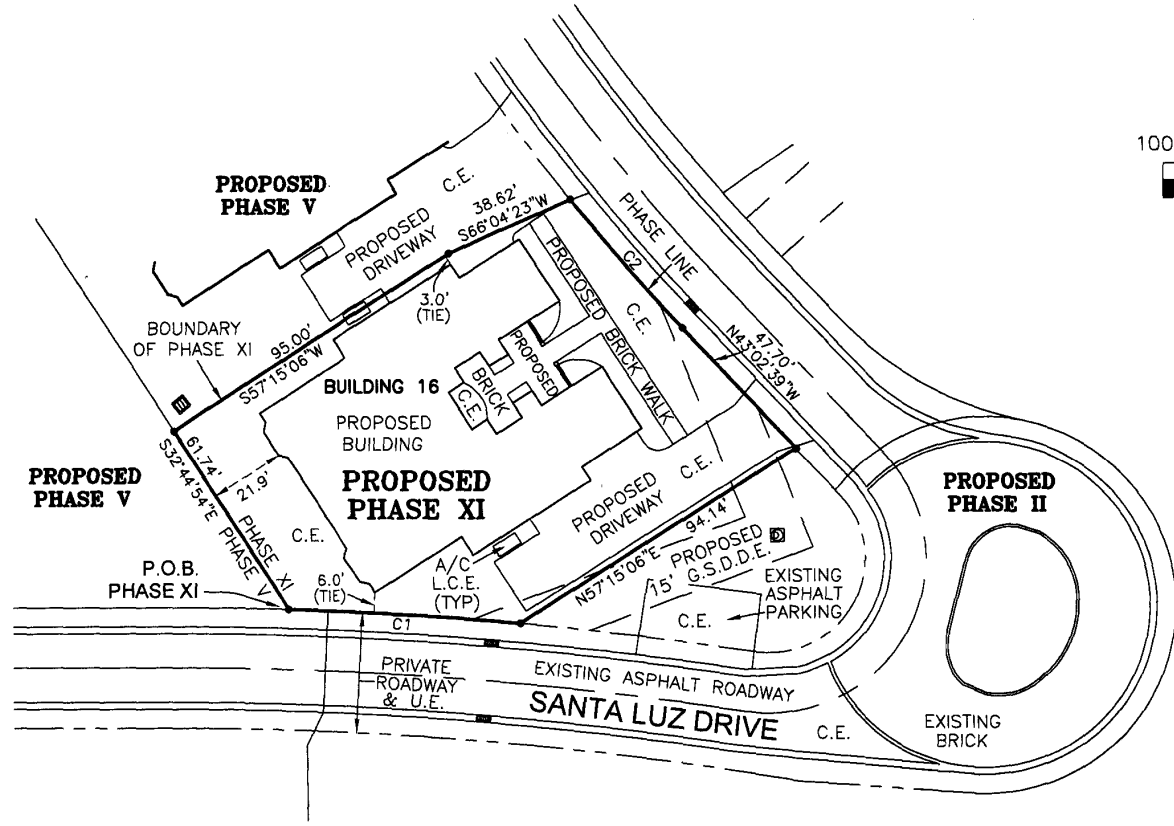
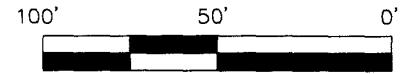
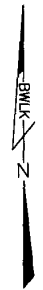
DETAIL PHASE X

Bean, Whitaker, Lutz & Kareh, Inc. (LB 4919)
 CIVIL ENGINEERS - SURVEYORS AND MAPPERS - PLANNERS
 13041 MCGREGOR BOULEVARD, FORT MYERS, FLORIDA 33919-5910 (239) 481-1331

CD41188_16.DWG

| DATE | PROJECT NO. | DRAWN BY | SCALE | SHEET | FILE NO. (S-T-R) |
|----------|-------------|----------|----------|----------|------------------|
| 11-16-10 | 41188 | CNA | 1" = 50' | 16 OF 24 | 18-45-26 |

EXHIBIT "D" TO CONDOMINIUM DECLARATION OF
SANTA LUZ,
A CONDOMINIUM
 LYING IN
 SECTION 18, TOWNSHIP 45 SOUTH, RANGE 26 EAST
 LEE COUNTY, FLORIDA



| | |
|----------------|----------------|
| CURVE 1 | CURVE 2 |
| R=1117.50' | R=617.50' |
| Δ=03°27'38" | Δ=04°34'31" |
| A=67.50' | A=49.31' |
| CH=67.49' | CH=49.30' |
| CB=S86°28'48"E | CB=N40°45'23"W |

LEGEND

- A/C = AIR CONDITIONER
- P.O.B. = POINT OF BEGINNING
- (TYP) = TYPICAL
- C.E. = COMMON ELEMENT
- L.C.E. = LIMITED COMMON ELEMENT
- U.E. = UTILITY EASEMENT
- D.E. = DRAINAGE EASEMENT
- G.S.D.D.E. = GATEWAY SERVICES DISTRICT DRAINAGE EASEMENTS

DETAIL PHASE XI

Bean, Whitaker, Lutz & Kareh, Inc. (LB 4919)

CIVIL ENGINEERS - SURVEYORS AND MAPPERS - PLANNERS

13041 MCGREGOR BOULEVARD, FORT MYERS, FLORIDA 33919-5910 (239) 481-1331

CD41188_17.DWG

| DATE | PROJECT NO. | DRAWN BY | SCALE | SHEET | FILE NO. (S-T-R) |
|----------|-------------|----------|----------|----------|------------------|
| 11-16-10 | 41188 | CNA | 1" = 50' | 17 OF 24 | 18-45-26 |