



Prepared By and To Be Returned To:  
 ROBERT S. FREEDMAN, ESQUIRE  
 CARLTON FIELDS, P.A.  
 Post Office Box 3239  
 Tampa, Florida 33601-3239



INSTR # 5906614  
 Official Records BK 04005 PG 2657  
 RECORDED 07/25/2003 02:44:10 PM  
 CHARLIE GREEN, CLERK OF COURT  
 LEE COUNTY  
 RECORDING FEE 24.00  
 DEPUTY CLERK J Miller

**SECOND SUPPLEMENT TO DECLARATION OF  
 CONDOMINIUM FOR HIDDEN LINKS CONDOMINIUM**

**WHEREAS**, the Declaration of Condominium for Hidden Links Condominium was recorded on November 16, 2001, in Official Records Book 3520, Page 4259, and which references the condominium drawings recorded in Condominium Book 30, Page 70-71, all of the public records of Lee County, Florida ("Declaration"); and

**WHEREAS**, the First Supplement was recorded on March 1, 2002, in Official Records Book 3587, Page 1704, and which references the condominium drawings recorded in Condominium Book 31, Page 52, all of the public records of Lee County, Florida; and

**WHEREAS**, there are unit(s) of Hidden Links Condominium which are now substantially complete and which are ready for conveyancing pursuant to Section 718.104(4)(e), Florida Statutes;

**NOW, THEREFORE**, the Declaration is hereby further amended by the condominium drawings recorded in Condominium Book 33, Page 91-93, of the public records of Lee County, Florida, of which a reduced-in-size copy is attached hereto as Exhibit 1 and incorporated herein by reference.

**IN WITNESS WHEREOF**, this instrument was executed by the undersigned this 30<sup>th</sup> day of October, 2003.

**WITNESSES:**

**WCI COMMUNITIES, INC., a  
 Delaware corporation, as Developer of  
 Hidden Links Condominium**

Name: [Signature]  
 Print Name: Marcelia D. Kelly

By: [Signature]  
 Timothy Oak, Vice President

Name: [Signature]  
 Print Name: Joyce E. Vanduser

(SEAL)

Units 10A, 10B, 10C, 10D, 11A, 11B, 11C, 11D,  
 12A, 12B, 12C, and 12D

STATE OF FLORIDA  
COUNTY OF LEE

The foregoing instrument was acknowledged before me this 30<sup>th</sup> day of March, 2003, by Timothy Oak, as Vice President of WCI COMMUNITIES, INC., a Delaware corporation, on behalf of the corporation, as Developer of Hidden Links Condominium. He is personally known to me.

My Commission Expires:

(AFFIX NOTARY SEAL)



Joyce E. Van Deusen  
(Signature)

Name: Joyce E. Van Deusen  
(Legibly Printed)

Notary Public, State of Florida

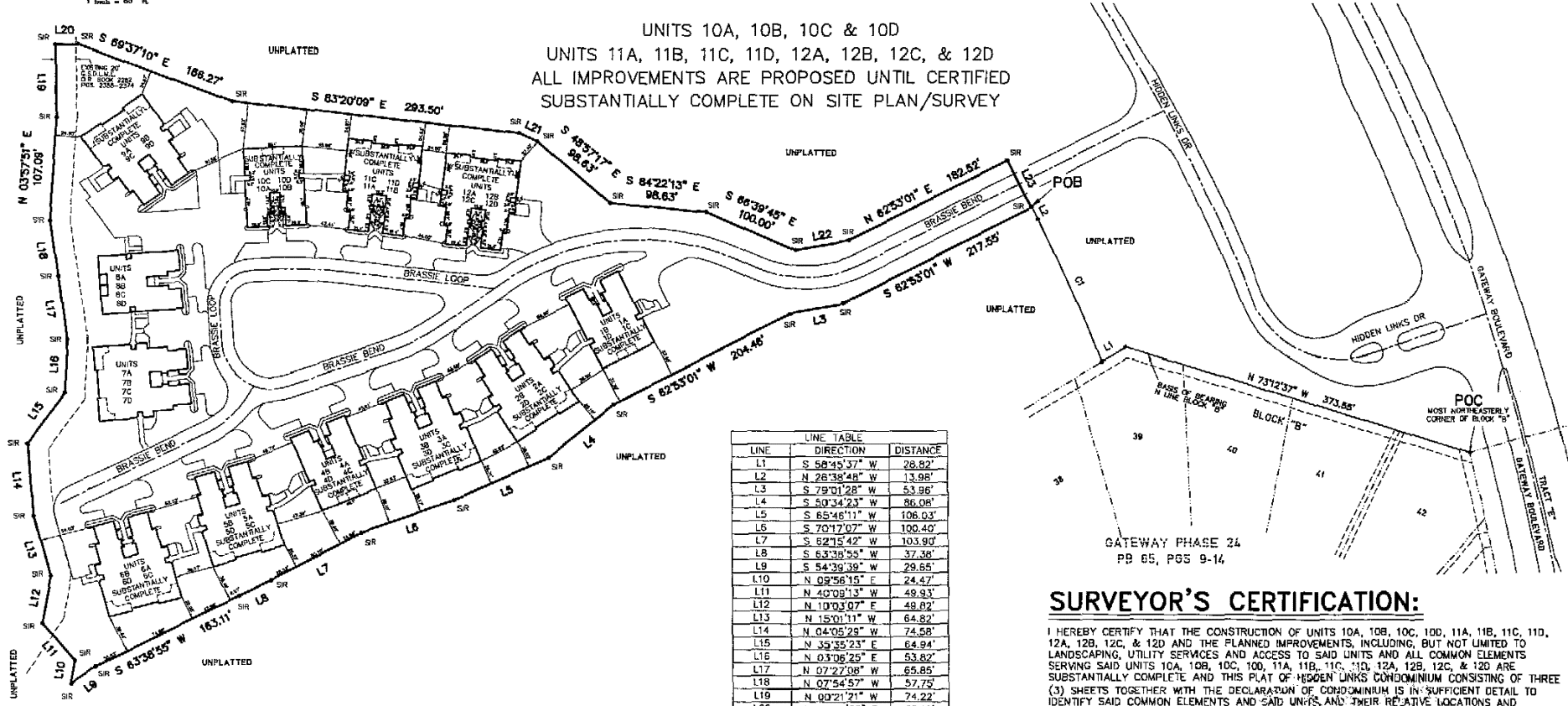
DD 118229  
(Commission Number, if any)

# HIDDEN LINKS CONDOMINIUM

LYING IN  
SECTION 6, TOWNSHIP 45 SOUTH, RANGE 26 EAST  
LEE COUNTY, FLORIDA.

## SITE PLAN

UNITS 10A, 10B, 10C & 10D  
UNITS 11A, 11B, 11C, 11D, 12A, 12B, 12C, & 12D  
ALL IMPROVEMENTS ARE PROPOSED UNTIL CERTIFIED  
SUBSTANTIALLY COMPLETE ON SITE PLAN/SURVEY



LINE	DIRECTION	DISTANCE
L1	S 58°45'37" W	28.82'
L2	N 26°38'48" W	13.98'
L3	S 79°01'28" W	53.98'
L4	S 50°34'23" W	86.08'
L5	S 65°46'11" W	106.03'
L6	S 70°17'07" W	100.40'
L7	S 62°15'42" W	103.90'
L8	S 63°38'55" W	37.38'
L9	S 54°38'39" W	29.65'
L10	N 09°56'15" E	24.47'
L11	N 40°09'13" W	48.33'
L12	N 19°03'07" E	48.82'
L13	N 15°01'11" W	64.82'
L14	N 04°05'29" W	74.58'
L15	N 35°35'23" E	64.94'
L16	N 03°06'25" E	53.82'
L17	N 07°27'08" W	65.85'
L18	N 07°54'57" W	57.75'
L19	N 09°21'21" W	74.22'
L20	N 88°34'02" E	22.12'
L21	S 66°39'45" E	20.00'
L22	N 79°01'28" E	53.98'
L23	S 26°38'48" E	55.00'

CURVE	RADIUS	LENGTH	CHORD	BEARING	DELTA
C1	1705.00'	180.12'	160.07'	N 23°57'23" W	S 22°51'

ALL DIMENSIONS ARE IN FEET AND DECIMALS THEREOF.  
UNLESS OTHERWISE NOTED ALL CURVES ARE TANGENTIAL AND CIRCULAR.  
ELEVATIONS REFER TO THE NATIONAL GEODETIC VERTICAL DATUM (N.G.V.D.) OF 1929.

### LEGEND

- POC POINT OF COMMENCEMENT
- POB POINT OF BEGINNING
- SIR SET IRON ROD W/CAP LB 1772
- G.S.D.L.M.E. GATEWAY SERVICES DISTRICT LAKE MAINTENANCE EASEMENT
- POINT OF INTERSECTION, POINT OF CURVATURE, POINT OF TANGENCY, POINT OF COMPOUND CURVATURE OR POINT OF REVERSE CURVATURE.

GATEWAY PHASE 24  
PB 65, PGS 9-14

### SURVEYOR'S CERTIFICATION:

I HEREBY CERTIFY THAT THE CONSTRUCTION OF UNITS 10A, 10B, 10C, 10D, 11A, 11B, 11C, 11D, 12A, 12B, 12C, & 12D AND THE PLANNED IMPROVEMENTS, INCLUDING, BUT NOT LIMITED TO LANDSCAPING, UTILITY SERVICES AND ACCESS TO SAID UNITS AND ALL COMMON ELEMENTS SERVING SAID UNITS 10A, 10B, 10C, 10D, 11A, 11B, 11C, 11D, 12A, 12B, 12C, & 12D ARE SUBSTANTIALLY COMPLETE AND THIS PLAT OF HIDDEN LINKS CONDOMINIUM CONSISTING OF THREE (3) SHEETS TOGETHER WITH THE DECLARATION OF CONDOMINIUM IS IN SUFFICIENT DETAIL TO IDENTIFY SAID COMMON ELEMENTS AND SAID UNITS AND THEIR RELATIVE LOCATIONS AND APPROXIMATE DIMENSIONS.

THE CONSTRUCTION OF THE CONDOMINIUM IS NOT SUBSTANTIALLY COMPLETE.

HOLE MONTES, INC.  
CERTIFICATE OF AUTHORIZATION NUMBER LB 3772

DATE: 7/21/03

*Thomas M. Murphy*  
THOMAS M. MURPHY

THIS INSTRUMENT WAS PREPARED BY  
THOMAS M. MURPHY, R.S.M. #5628

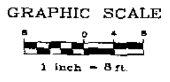
**Hole Montes**  
BUSINESS PLANNERS & SURVEYORS  
850 Encore Way  
Naples, FL 34110  
Phone: (941) 254-2000  
Florida Certificate of  
Authorization No. 1772

REFERENCE: SEE DRAWING TO DWS NO. A-1388-21 DRAWN BY BEN

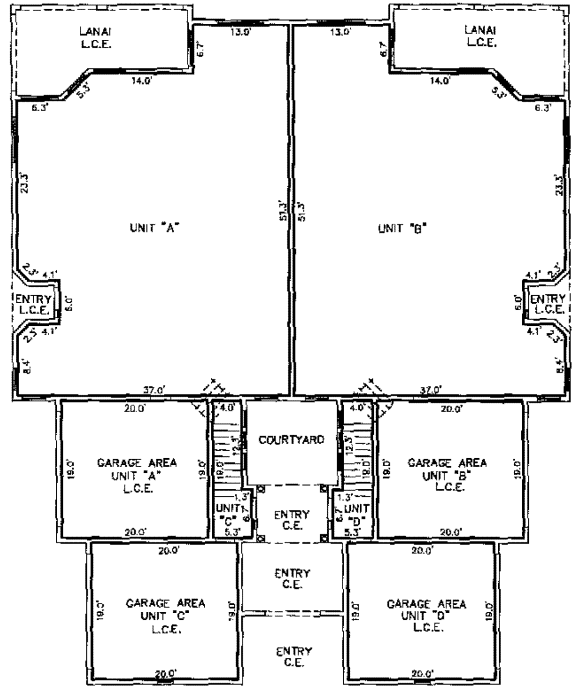
# HIDDEN LINKS CONDOMINIUM

LYING IN  
SECTION 6, TOWNSHIP 45 SOUTH, RANGE 26 EAST  
LEE COUNTY, FLORIDA.

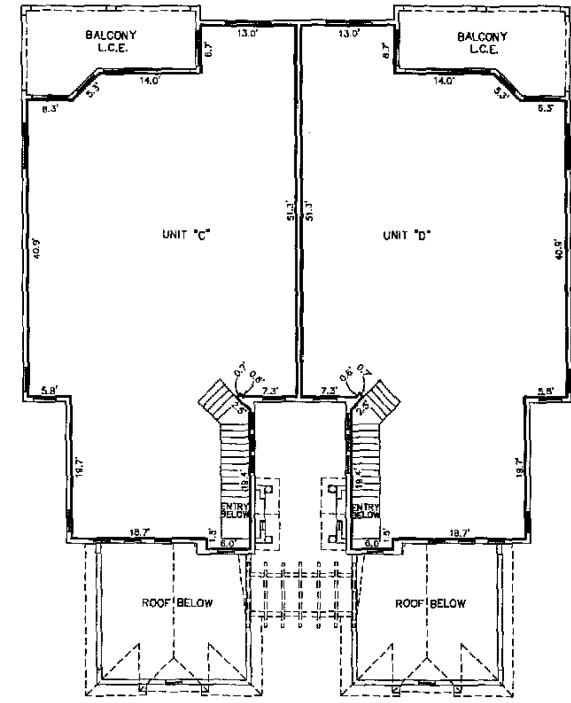
UNITS 11A, 11B, 11C, 11D, 12A, 12B, 12C & 12 D



## FIRST FLOOR



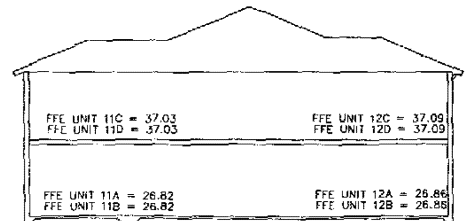
## SECOND FLOOR



ALL DIMENSIONS SHOWN  
ARE APPROXIMATE

### BUILDING FLOOR ELEVATIONS

BUILDING NUMBER	UNIT "A"	UNIT "B"	UNIT "C"	UNIT "D"
2	26.45	26.45	36.71	36.71
3	26.48	26.44	36.66	36.66
5	26.52	26.52	36.70	36.70
6	26.45	26.45	36.73	36.73
7				
9	26.93	26.93	37.11	37.11
11	26.82	26.82	37.03	37.03
12	26.86	26.86	37.09	37.09



UNIT FLOOR ELEVATIONS SCHEMATIC

ALL DIMENSIONS ARE IN FEET AND DECIMALS THEREOF.

ELEVATIONS REFER TO THE NATIONAL GEODETIC VERTICAL DATUM (N.G.V.D.) OF 1929.

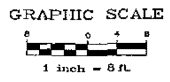
THIS INSTRUMENT WAS PREPARED BY  
THOMAS M. MURPHY, P.S.M. #5628



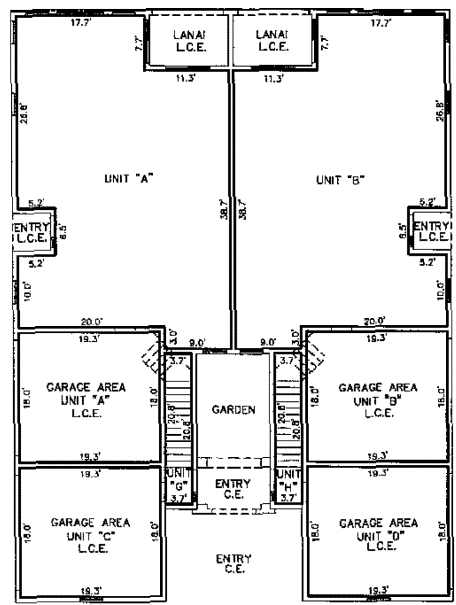
850 Encore Way  
Naples, FL 34110  
Phone: (941) 254-2000  
Florida Certificate of  
Authorization No. 1772

# HIDDEN LINKS CONDOMINIUM

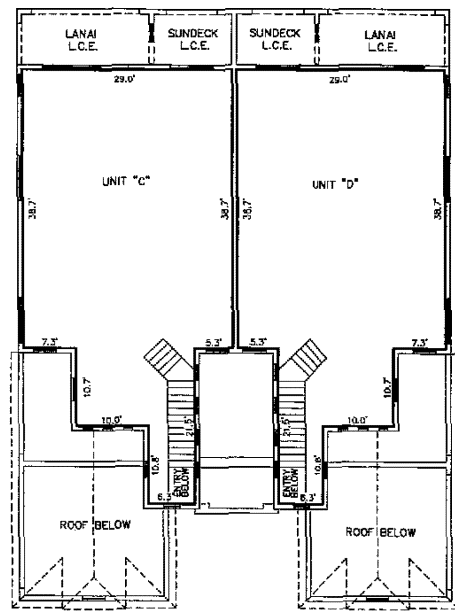
LYING IN  
SECTION 6, TOWNSHIP 45 SOUTH, RANGE 26 EAST  
LEE COUNTY, FLORIDA.  
UNITS 10A, 10B, 10C & 10D



## FIRST FLOOR



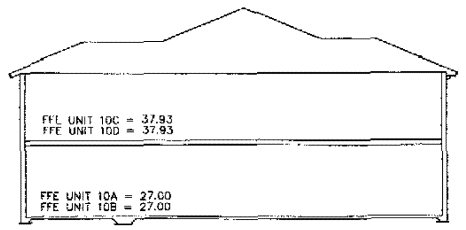
## SECOND FLOOR



ALL DIMENSIONS SHOWN  
ARE APPROXIMATE

### BUILDING FLOOR ELEVATIONS

BUILDING NUMBER	UNIT "A"	UNIT "B"	UNIT "C"	UNIT "D"
1	26.46	26.46	37.43	37.43
4	26.46	26.47	37.41	37.45
5				
10	27.00	27.00	37.93	37.93



UNIT FLOOR ELEVATIONS SCHEMATIC  
ALL DIMENSIONS ARE IN FEET AND DECIMALS THEREOF.

ELEVATIONS REFER TO THE NATIONAL GEODETIC VERTICAL DATUM (N.G.V.D.) OF 1929.

THIS INSTRUMENT WAS PREPARED BY  
**THOMAS M. MURPHY, P.S.M. #5628**  
950 Encore Way  
Naples, FL 34110  
Phone: (841) 254-2000  
Florida Certificate of  
Engineers-Planners-Surveyors  
Authorization No. 1772

REFERENCE NEL 80670FP DWS NO. 4-1206-2 DRAWN BY BDN