

GATEWAY HIDDEN LINKS II

A SUBDIVISION LOCATED IN A PORTION OF SECTION 1, TOWNSHIP 45 SOUTH,
RANGE 25 EAST, AND A PORTION OF SECTION 6, TOWNSHIP 45 SOUTH,
RANGE 26 EAST, LEE COUNTY, FLORIDA.

DEDICATION

KNOW ALL MEN BY THESE PRESENTS THAT BAY COLONY-GATEWAY, INC., A DELAWARE CORPORATION, QUALIFIED TO DO BUSINESS IN THE STATE OF FLORIDA, THE OWNER OF THE LANDS DESCRIBED HEREIN HAS CAUSED THIS PLAT OF GATEWAY HIDDEN LINKS II, A SUBDIVISION LOCATED IN A PORTION OF SECTION 1, TOWNSHIP 45 SOUTH, RANGE 25 EAST, AND A PORTION OF SECTION 6, TOWNSHIP 45 SOUTH, RANGE 26 EAST, LEE COUNTY, FLORIDA, TO BE MADE, AND DOES HEREBY MAKE THE FOLLOWING DEDICATIONS:

TO THE GATEWAY GREENS COMMUNITY ASSOCIATION, INC., A FLORIDA NOT-FOR-PROFIT CORPORATION, FOR THE BENEFIT OF ITS PRESENT AND FUTURE MEMBERS, ITS SUCCESSORS AND ASSIGNS, AND THEIR TENANTS, INVITEES, LICENSEES, MORTGAGEES AND EMPLOYEES, ALL OF THE PRIVATE ROAD RIGHTS-OF-WAY OF HIDDEN LINKS DRIVE AND BRASSIE BEND (HEREIN REFERRED TO AS TRACT "C"), FOR PRIVATE STREET PURPOSES, SUBJECT TO THE DEDICATION OF A DRAINAGE EASEMENT ON, OVER, ACROSS OR UNDER SAID TRACT "C", TOGETHER WITH LANDSCAPING AND SIGNAGE IMPROVEMENTS NOW OR HEREAFTER CONTAINED THEREIN, FOR THE PURPOSES OF INGRESS AND EGRESS, MAINTENANCE, REPAIR AND REPLACEMENT OF ROAD, LANDSCAPING AND SIGNAGE, RESERVING UNTO BAY COLONY-GATEWAY, INC., ITS SUCCESSORS AND ASSIGNS, EMPLOYEES AND INVITEES, A PERPETUAL RIGHT FOR INGRESS AND EGRESS ON AND OVER SAID TRACT "C".

TO THE PUBLIC, ALL OF THE ROAD RIGHT-OF-WAY OF GATEWAY BOULEVARD (HEREIN REFERRED TO AS TRACT "E") FOR PUBLIC STREET PURPOSES, SUBJECT TO THE DEDICATION OF A DRAINAGE EASEMENT ON, OVER, ACROSS OR UNDER SAID TRACT "E", GRANTED TO GATEWAY SERVICES DISTRICT, ITS SUCCESSORS AND ASSIGNS, AND SUBJECT TO EASEMENTS DEPICTED ON TRACT "E" AS DEDICATED BELOW.

TO THE GATEWAY SERVICES DISTRICT, ITS SUCCESSORS AND ASSIGNS, ALL EASEMENTS HEREIN LABELED "LAKE MAINTENANCE EASEMENT" (INCLUDING PART OF LOTS 20 THROUGH 41, INCLUSIVE) AS SHOWN ON THIS PLAT AS A LAKE MAINTENANCE EASEMENT, FOR PURPOSES OF WATER MANAGEMENT, DRAINAGE AND/OR LAKE MAINTENANCE AND ACCESS TO WATER MANAGEMENT EASEMENTS.

TO THE GATEWAY GREENS COMMUNITY ASSOCIATION, INC., A FLORIDA NOT-FOR-PROFIT CORPORATION, FOR THE BENEFIT OF ITS PRESENT AND FUTURE MEMBERS, ITS SUCCESSORS AND ASSIGNS, AND THEIR TENANTS, INVITEES, LICENSEES, MORTGAGEES AND EMPLOYEES, ALL OF TRACTS "A" AND "B" (LANDSCAPE BUFFER TRACTS) FOR THE PURPOSES OF INSTALLATION, REPAIR AND MAINTENANCE OF LANDSCAPING AND SIGNAGE.

TO THE GATEWAY GREENS COMMUNITY ASSOCIATION, INC., A FLORIDA NOT-FOR-PROFIT CORPORATION, FOR THE BENEFIT OF ITS PRESENT AND FUTURE MEMBERS, ITS SUCCESSORS AND ASSIGNS, AND THEIR TENANTS, INVITEES, LICENSEES, MORTGAGEES AND EMPLOYEES, ALL EASEMENTS HEREIN LABELED "LANDSCAPE TRANSITION YARD AND PRIVACY WALL EASEMENT" (INCLUDING PART OF TRACTS "A" AND "B") AS SHOWN ON THIS PLAT AS A LANDSCAPE TRANSITION YARD AND PRIVACY WALL EASEMENT FOR PURPOSES OF CONSTRUCTION, INSTALLATION, REPAIR AND MAINTENANCE OF PRIVACY WALLS AND LANDSCAPING.

TO THE GATEWAY SERVICES DISTRICT, ITS SUCCESSORS AND ASSIGNS, ALL EASEMENTS HEREIN LABELED "DRAINAGE EASEMENT" (INCLUDING ALL OF TRACTS "C" AND "E") AS SHOWN ON THIS PLAT AS A GATEWAY SERVICES DISTRICT DRAINAGE EASEMENT, FOR PURPOSES OF INSTALLATION, REPAIR AND MAINTENANCE OF ITS DRAINAGE FACILITIES WITHIN SAID DRAINAGE EASEMENTS.

TO THE GATEWAY SERVICES DISTRICT, ITS SUCCESSORS AND ASSIGNS, AND TO THE RESPECTIVE GOVERNMENTAL AGENCIES AND LICENSED PRIVATE PUBLIC UTILITIES HAVING THE AUTHORITY TO PROVIDE FOR SUCH SERVICES, ALL EASEMENTS HEREIN LABELED "PUBLIC UTILITY EASEMENT" (INCLUDING ALL OF TRACTS "C" AND "E", PART OF TRACTS "A", "B" AND "D", AND PART OF ALL LOTS) AS SHOWN ON THIS PLAT AS A PUBLIC UTILITY EASEMENT, FOR THE PURPOSES OF CONSTRUCTION, INSTALLATION, REPAIR, MAINTENANCE AND OPERATION OF THEIR RESPECTIVE FACILITIES, INCLUDING WATER, SEWER, IRRIGATION, STREET LIGHTS, ELECTRIC, GAS, TELEPHONE AND CABLE TELEVISION. NO SUCH CONSTRUCTION, INSTALLATION, MAINTENANCE AND OPERATION OF CABLE TELEVISION SERVICES SHALL INTERFERE WITH THE FACILITIES AND SERVICES OF AN ELECTRIC, TELEPHONE, GAS OR OTHER PUBLIC UTILITY. IN THE EVENT A CABLE TELEVISION COMPANY DAMAGES THE FACILITIES OF A PUBLIC UTILITY, IT SHALL BE SOLELY RESPONSIBLE FOR THE DAMAGES.

TO THE GATEWAY SERVICES DISTRICT, ITS SUCCESSORS AND ASSIGNS, AND TO THE RESPECTIVE GOVERNMENTAL AGENCIES AND PUBLIC UTILITIES HAVING THE AUTHORITY TO PROVIDE FOR SUCH SERVICES, A NON-EXCLUSIVE ACCESS EASEMENT ON, OVER AND ACROSS TRACTS "C" AND "E" FOR THE SOLE PURPOSE OF GAINING ACCESS TO AND FROM THEIR RESPECTIVE FACILITIES WITHIN SAID DRAINAGE, LAKE MAINTENANCE AND UTILITY EASEMENTS SHOWN HEREON.

IN WITNESS WHEREOF, BAY COLONY-GATEWAY, INC., A DELAWARE CORPORATION, QUALIFIED TO DO BUSINESS IN THE STATE OF FLORIDA, HAS CAUSED THESE PRESENTS TO BE MADE AND SIGNED IN ITS NAME BY ITS VICE PRESIDENT AND ATTESTED TO BY ITS SECRETARY THIS 27th DAY OF November, 2001.

BAY COLONY-GATEWAY, INC.,
A DELAWARE CORPORATION

Susan Goodhuff BY Timothy Oak
WITNESS: TIMOTHY OAK
VICE PRESIDENT

Susan Anthony
WITNESS: Daniel J. Cisinski
PRINTED NAME

Melanie Scire BY: Wynne N. Hastings
WITNESS: WYNNE N. HASTINGS
SECRETARY

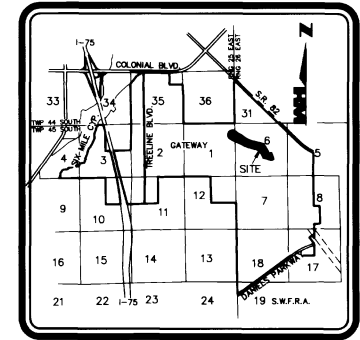
Melanie Scire
WITNESS: Robert Hoffman
PRINTED NAME

NOTICE:

THIS PLAT, AS RECORDED IN ITS GRAPHIC FORM, IS THE OFFICIAL DEPICTION OF THE SUBDIVIDED LANDS DESCRIBED HEREIN AND WILL IN NO CIRCUMSTANCES BE SUPPLANTED IN AUTHORITY BY ANY OTHER GRAPHIC OR DIGITAL FORM OF THE PLAT. THERE MAY BE ADDITIONAL RESTRICTIONS THAT ARE NOT RECORDED ON THIS PLAT THAT MAY BE FOUND IN THE PUBLIC RECORDS OF THIS COUNTY.

NOTICE:

LANDS DESCRIBED IN THIS PLAT MAY BE SUBDIVIDED BY THE DEVELOPER WITHOUT THE ROADS, DRAINAGE, WATER AND SEWER FACILITIES BEING ACCEPTED FOR MAINTENANCE BY LEE COUNTY. ANY PURCHASER OF A LOT IN THIS SUBDIVISION IS ADVISED TO DETERMINE WHETHER THE LOT MAY BE SUBJECT TO ASSESSMENT OR CALLED UPON TO BEAR A PORTION OF OR ALL OF THE EXPENSE OF CONSTRUCTION, MAINTENANCE OR IMPROVEMENT OF ROADS, DRAINAGE, WATER AND SEWER FACILITIES.



LOCATION MAP

NOT TO SCALE

ACKNOWLEDGEMENT

STATE OF FLORIDA
COUNTY OF LEE

THE FOREGOING DEDICATION WAS ACKNOWLEDGED BEFORE ME THIS 27th DAY OF November, 2001 BY TIMOTHY OAK, VICE PRESIDENT AND WYNNE N. HASTINGS, SECRETARY OF BAY COLONY-GATEWAY, INC., A DELAWARE CORPORATION, QUALIFIED TO DO BUSINESS IN THE STATE OF FLORIDA, ON BEHALF OF THE CORPORATION. THEY ARE PERSONALLY KNOWN TO ME TO BE THE PERSONS DESCRIBED IN AND WHO EXECUTED THE FOREGOING DEDICATION AND ACKNOWLEDGED THE EXECUTION THEREOF TO BE THEIR FREE ACT AND DEED AS SUCH OFFICERS FOR THE USES AND PURPOSES THEREIN MENTIONED AND THAT SAID DEDICATION IS THE ACT AND DEED OF SAID CORPORATION.

Annabelle
NOTARY PUBLIC - STATE OF FLORIDA

Lynn Wells
NAME (PRINTED)

CC 878358 10/10/03
COMMISSION # COMMISSION EXPIRES

APPROVAL

THIS PLAT IS ACCEPTED AND APPROVED BY THE BOARD OF COUNTY COMMISSIONERS, LEE COUNTY, FLORIDA THIS 28th DAY OF November, 2001.

Charlie Green
CHAIRMAN OF THE BOARD
Robert E. Jones
PRINTED NAME

Annabelle
COUNTY ATTORNEY
Jean C. Henry
PRINTED NAME

Man Gith
DIRECTOR, DEPARTMENT OF
COMMUNITY DEVELOPMENT
MARIE GIBBS
PRINTED NAME

Charlie Green
CLERK OF COURT
Charlie Green
PRINTED NAME

Edward J. Edwards
DIRECTOR, DEVELOPMENT SERVICES DIVISION
Patricia Edwards
PRINTED NAME

GATEWAY SERVICES DISTRICT

THE DISTRICT HEREBY ACKNOWLEDGES ACCEPTANCE OF EASEMENTS DEDICATED ON THIS PLAT AND DRAINAGE OF ALL LANDS CONTAINED WITHIN THIS PLAT.

WITNESSES AS TO BOTH
David W. Caldwell
NAME
David W. Caldwell
PRINTED NAME

Theresa A. Smith
NAME
Theresa A. Smith
PRINTED NAME

R. Lee Menzies
R. LEE MENZIES, CHAIRMAN
GATEWAY SERVICES DISTRICT

Terry Dolan
TERREY DOLAN, ASST. SECRETARY
GATEWAY SERVICES DISTRICT

ACKNOWLEDGEMENT

STATE OF FLORIDA
COUNTY OF LEE

THE FOREGOING ACCEPTANCE WAS ACKNOWLEDGED BEFORE ME THIS 28th DAY OF November, 2001 BY R. LEE MENZIES, CHAIRMAN AND TERREY DOLAN, ASST. SECRETARY OF THE GATEWAY SERVICES DISTRICT, ON BEHALF OF SAID DISTRICT. THEY ARE PERSONALLY KNOWN TO ME OR HAVE PRODUCED N/A AS IDENTIFICATION.

David W. Caldwell
NOTARY PUBLIC, STATE OF FLORIDA

DAVID W. CALDWELL
PRINTED NAME
CC 993168
SERIAL NUMBER (IF ANY)

MY COMMISSION EXPIRES:
2/13/05

CERTIFICATION 5296693

I HEREBY CERTIFY THAT THE ATTACHED PLAT OF GATEWAY HIDDEN LINKS II, A SUBDIVISION LOCATED IN A PORTION OF SECTION 1, TOWNSHIP 45 SOUTH, RANGE 25 EAST, AND A PORTION OF SECTION 6, TOWNSHIP 45 SOUTH, RANGE 26 EAST, LEE COUNTY, FLORIDA WAS FILED FOR RECORD AT 1:45 P.M. THIS 30th DAY OF November, 2001 AND DULY RECORDED IN PLAT BOOK 69 AT PAGES 91 THROUGH 100, OF THE PUBLIC RECORDS OF LEE COUNTY, FLORIDA.

Charlie Green
CLERK OF CIRCUIT COURT
IN AND FOR LEE COUNTY
Charlie Green
PRINTED NAME

REVIEW BY THE DESIGNATED COUNTY PSM DETERMINED THAT THIS PLAT CONFORMS TO THE REQUIREMENTS OF F.S. CH. 177, PART 1.

Allen Davis
TITLE: CC PSM
PRINTED NAME

SURVEYOR'S CERTIFICATION

I HEREBY CERTIFY THAT THE ATTACHED PLAT OF GATEWAY HIDDEN LINKS II, A SUBDIVISION LOCATED IN A PORTION OF SECTION 1, TOWNSHIP 45 SOUTH, RANGE 25 EAST, AND A PORTION OF SECTION 6, TOWNSHIP 45 SOUTH, RANGE 26 EAST, LEE COUNTY, FLORIDA, WAS PREPARED UNDER MY DIRECTION AND SUPERVISION AND COMPLIES WITH ALL THE REQUIREMENTS OF CHAPTER 177, FLORIDA STATUTES. I FURTHER CERTIFY THAT THE PERMANENT REFERENCE MONUMENTS WILL BE SET PRIOR TO THE RECORDING OF THIS PLAT AND PERMANENT CONTROL POINTS WILL BE SET WITHIN ONE YEAR OF THE DATE THIS PLAT WAS RECORDED.

HOLE MONTE, INC.
CERTIFICATE OF AUTHORIZATION NUMBER LB 1772
DATE: 11/19/01

Thomas M. Murphy P.S.M. #5628
THOMAS M. MURPHY STATE OF FLORIDA

THIS INSTRUMENT WAS PREPARED BY
THOMAS M. MURPHY, P.S.M. #5628

HM
HOLE MONTE
ENGINEERS/PLANNERS/SURVEYORS
950 Encore Way
Naples, FL 34110
Phone: (941) 254-2000
Florida Certificate of
Authorization No. 1772

REFERENCE NO. 091CS DRAWN BY KJM

GATEWAY HIDDEN LINKS II

A SUBDIVISION LOCATED IN A PORTION OF SECTION 1, TOWNSHIP 45 SOUTH,
RANGE 25 EAST, AND A PORTION OF SECTION 6, TOWNSHIP 45 SOUTH,
RANGE 26 EAST, LEE COUNTY, FLORIDA.

PROPERTY DESCRIPTION:

A PARCEL OF LAND LOCATED IN A PORTION OF SECTION 1, TOWNSHIP 45 SOUTH, RANGE 25 EAST, AND A PORTION OF SECTION 6, TOWNSHIP 45 SOUTH, RANGE 26 EAST, ALL IN LEE COUNTY, FLORIDA, BEING MORE PARTICULARLY DESCRIBED AS FOLLOWS:

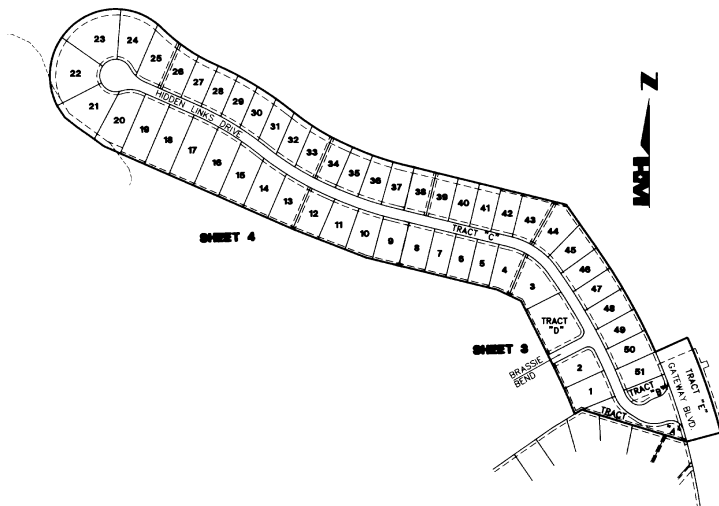
BEGIN AT THE MOST NORTHEASTERLY CORNER OF BLOCK "B", GATEWAY PHASE 2A, ACCORDING TO THE PLAT THEREOF RECORDED IN PLAT BOOK 65 AT PAGES 9 THROUGH 14 OF THE PUBLIC RECORDS OF LEE COUNTY, FLORIDA; THENCE RUN N.73°12'37"W, ALONG THE BOUNDARY OF SAID BLOCK "B", FOR A DISTANCE OF 373.55 FEET; THENCE RUN S.85°45'37"W, ALONG THE BOUNDARY OF SAID BLOCK "B", FOR A DISTANCE OF 28.82 FEET TO A POINT ON A CIRCULAR CURVE, CONCAVE SOUTHWESTERLY, WHOSE RADIUS POINT BEARS S.88°44'03"W, A DISTANCE OF 1,705.00 FEET THEREFROM; THENCE RUN NORTHWESTERLY ALONG THE ARC OF SAID CURVE TO THE LEFT, HAVING A RADIUS OF 1,705.00 FEET, THROUGH A CENTRAL ANGLE OF 05°22'52", SUBTENDED BY A CHORD OF 160.07 FEET AT A BEARING OF N.23°57'23"W, FOR A DISTANCE OF 160.13 FEET TO THE END OF SAID CURVE; THENCE RUN N.26°38'48"W, FOR A DISTANCE OF 263.44 FEET; THENCE RUN N.64°49'41"W, FOR A DISTANCE OF 90.11 FEET; THENCE RUN N.76°22'20"W, FOR A DISTANCE OF 401.69 FEET; THENCE RUN N.88°31'14"W, FOR A DISTANCE OF 201.67 FEET; THENCE RUN N.66°32'27"W, FOR A DISTANCE OF 708.05 FEET; THENCE RUN N.54°02'45"W, FOR A DISTANCE OF 60.85 FEET; THENCE RUN N.50°10'06"W, FOR A DISTANCE OF 51.92 FEET; THENCE RUN N.52°15'35"W, FOR A DISTANCE OF 52.41 FEET; THENCE RUN N.34°10'12"W, FOR A DISTANCE OF 46.87 FEET TO A POINT ON A CIRCULAR CURVE, CONCAVE SOUTHEASTERLY, WHOSE RADIUS POINT BEARS N.62°54'46"E, A DISTANCE OF 225.00 FEET THEREFROM; THENCE RUN NORTHEASTERLY ALONG THE ARC OF SAID CURVE TO THE RIGHT, HAVING A RADIUS OF 225.00 FEET, THROUGH A CENTRAL ANGLE OF 16°13'03", SUBTENDED BY A CHORD OF 444.22 FEET AT A BEARING OF N.53°43'16"E, FOR A DISTANCE OF 634.57 FEET TO A POINT OF REVERSE CURVE, CONCAVE NORTHEASTERLY; THENCE RUN SOUTHEASTERLY ALONG THE ARC OF SAID CURVE TO THE LEFT, HAVING A RADIUS OF 600.00 FEET, THROUGH A CENTRAL ANGLE OF 21°04'24", SUBTENDED BY A CHORD OF 219.44 FEET AT A BEARING OF S.56°00'22"E, FOR A DISTANCE OF 220.68 FEET TO A POINT OF REVERSE CURVE, CONCAVE SOUTHWESTERLY; THENCE RUN SOUTHEASTERLY ALONG THE ARC OF SAID CURVE TO THE RIGHT, HAVING A RADIUS OF 1,167.50 FEET, THROUGH A CENTRAL ANGLE OF 14°32'46", SUBTENDED BY A CHORD OF 265.57 FEET AT A BEARING OF S.58°15'14"E, FOR A DISTANCE OF 296.37 FEET TO THE END OF SAID CURVE; THENCE RUN S.81°59'54"E, FOR A DISTANCE OF 23.58 FEET TO THE BEGINNING OF A TANGENTIAL CIRCULAR CURVE, CONCAVE NORTHEASTERLY; THENCE RUN SOUTHEASTERLY ALONG THE ARC OF SAID CURVE TO THE LEFT, HAVING A RADIUS OF 832.50 FEET, THROUGH A CENTRAL ANGLE OF 14°20'53", SUBTENDED BY A CHORD OF 207.93 FEET AT A BEARING OF S.58°12'21"E, FOR A DISTANCE OF 208.48 FEET TO THE END OF SAID CURVE; THENCE RUN S.66°20'47"E, FOR A DISTANCE OF 25.17 FEET TO THE BEGINNING OF A TANGENTIAL CIRCULAR CURVE, CONCAVE NORTHERLY; THENCE RUN EASTERLY ALONG THE ARC OF SAID CURVE TO THE LEFT, HAVING A RADIUS OF 1,032.50 FEET, THROUGH A CENTRAL ANGLE OF 10°01'33", SUBTENDED BY A CHORD OF 180.44 FEET AT A BEARING OF S.71°21'46"E, FOR A DISTANCE OF 180.67 FEET TO THE END OF SAID CURVE; THENCE RUN S.76°22'20"E, FOR A DISTANCE OF 568.15 FEET; THENCE RUN S.35°22'47"E, FOR A DISTANCE OF 177.52 FEET TO THE BEGINNING OF A TANGENTIAL CIRCULAR CURVE, CONCAVE SOUTHWESTERLY; THENCE RUN SOUTHWESTERLY ALONG THE ARC OF SAID CURVE TO THE RIGHT, HAVING A RADIUS OF 2,040.00 FEET, THROUGH A CENTRAL ANGLE OF 11°24'42", SUBTENDED BY A CHORD OF 405.84 FEET AT A BEARING OF S.29°40'28"E, FOR A DISTANCE OF 406.31 FEET TO THE END OF SAID CURVE; THENCE RUN N.66°01'55"E, FOR A DISTANCE OF 120.00 FEET TO A POINT ON A CIRCULAR CURVE, CONCAVE WESTERLY, WHOSE RADIUS POINT BEARS S.68°01'55"W, A DISTANCE OF 2,160.00 FEET THEREFROM; THENCE RUN SOUTHERLY ALONG THE ARC OF SAID CURVE TO THE RIGHT, HAVING A RADIUS OF 2,160.00 FEET, THROUGH A CENTRAL ANGLE OF 09°02'32", SUBTENDED BY A CHORD OF 340.53 FEET AT A BEARING OF S.19°26'49"E, FOR A DISTANCE OF 340.89 FEET TO THE END OF SAID CURVE; THE SAME BEING A POINT ON THE BOUNDARY OF TRACT "E", OF SAID GATEWAY PHASE 2A; THENCE RUN S.75°04'27"W, ALONG THE BOUNDARY OF SAID TRACT "E", FOR A DISTANCE OF 120.00 FEET TO THE POINT OF BEGINNING; CONTAINING 20.944 ACRES, MORE OR LESS.

NOTES

1. ALL DIMENSIONS ARE IN FEET AND DECIMALS THEREOF.
2. BASIS FOR BEARING REFER TO THE NORTH LINE OF BLOCK "B", GATEWAY PHASE 2A, ACCORDING TO THE PLAT THEREOF RECORDED IN PLAT BOOK 65, PAGES 9-14, LEE COUNTY, FLORIDA, AS BEING N.73°12'37" W.
3. ■ INDICATES SET PERMANENT REFERENCE MONUMENT (PRM).
4. ○ INDICATES FOUND MONUMENT.
5. ■ INDICATES MONUMENT NOT SET.
6. ○ INDICATES INTERSECTION CONTROL POINT (ICP).
7. * INDICATES POINT OF INTERSECTION, POINT OF CURVATURE, POINT OF TANGENCY, POINT OF COMPOUND CURVATURE OR POINT OF REVERSE CURVE, AS REQUIRED BY CHAPTER 177, PART I, FLORIDA STATUTES.
8. N.R. INDICATES NON-RADIAL LINE.
9. D.E. = DRAINAGE EASEMENT.
10. P.U.E. = PUBLIC UTILITY EASEMENT.
11. A.E. = ACCESS EASEMENT.
12. L.M.E. = LAWN MAINTENANCE EASEMENT.
13. L.T.Y.A.P.W.E. = LANDSCAPE TRANSITION YARD AND PRIVACY WALL EASEMENT.

AREA TABLE	
1	13,895.82 S.F.±
2	13,997.27 S.F.±
3	17,690.27 S.F.±
4	13,115.24 S.F.±
5	11,250.00 S.F.±
6	11,250.00 S.F.±
7	11,250.00 S.F.±
8	13,500.00 S.F.±
9	13,676.98 S.F.±
10	13,936.30 S.F.±
11	13,627.53 S.F.±
12	13,806.88 S.F.±
13	14,532.82 S.F.±
14	15,689.68 S.F.±
15	17,664.76 S.F.±
16	19,293.32 S.F.±
17	20,107.35 S.F.±
18	19,802.14 S.F.±
19	19,790.57 S.F.±
20	19,474.24 S.F.±
21	20,147.17 S.F.±
22	25,766.80 S.F.±
23	24,699.20 S.F.±
24	19,185.66 S.F.±
25	16,654.18 S.F.±
26	12,351.76 S.F.±
27	11,324.48 S.F.±
28	11,263.55 S.F.±
29	11,325.67 S.F.±
30	11,444.60 S.F.±
31	11,588.32 S.F.±
32	11,473.65 S.F.±
33	11,700.42 S.F.±
34	11,632.04 S.F.±
35	11,714.03 S.F.±
36	11,782.15 S.F.±
37	11,566.72 S.F.±
38	11,625.00 S.F.±
39	11,625.00 S.F.±
40	11,250.00 S.F.±
41	11,250.00 S.F.±
42	11,346.39 S.F.±
43	14,158.93 S.F.±
44	15,655.66 S.F.±
45	12,769.18 S.F.±
46	11,720.48 S.F.±
47	11,696.29 S.F.±
48	11,696.29 S.F.±
49	11,696.29 S.F.±
50	11,696.29 S.F.±
51	11,696.28 S.F.±

TRACT A	LANDSCAPE AREA	14,020.02 S.F.±
TRACT B	LANDSCAPE AREA	8,957.51 S.F.±
TRACT C	PRIVATE ROADWAY	102,477.04 S.F.±
TRACT D	CLUBHOUSE	24,235.00 S.F.±
TRACT E	PUBLIC ROADWAY	39,770.05 S.F.±
TOTAL AREA		912,513.44 S.F.±



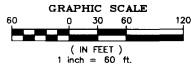
KEY MAP
NOT TO SCALE

THIS INSTRUMENT WAS PREPARED BY
THOMAS M. MURPHY, P.S.M. #5628

950 Encore Way
Naples, FL 34110
Phone: (941) 254-2000
Florida Certificate of
Authorization No.1772

GATEWAY HIDDEN LINKS II

A SUBDIVISION LOCATED IN A PORTION OF SECTION 1, TOWNSHIP 45 SOUTH,
RANGE 25 EAST, AND A PORTION OF SECTION 6, TOWNSHIP 45 SOUTH,
RANGE 26 EAST, LEE COUNTY, FLORIDA.



LINE	DIRECTION	DISTANCE
L1	S 58°45'37" W	28.97
L8	N 71°22'27" E	8.97
L9	N 71°22'27" E	9.15
L10	N 71°22'27" E	60.00
L11	N 71°22'27" E	70.14
L12	S 76°22'20" E	411.86
L13	S 76°22'20" E	411.86
L14	S 76°22'20" E	411.86
L26	S 26°38'48" E	17.50
L27	S 26°38'48" E	17.50
L28	S 62°33'01" W	123.23
L29	S 62°33'01" W	167.02
L30	S 62°33'01" W	124.80
L31	N 68°52'24" E	20.00
L32	N 68°52'24" E	20.00
L33	N 67°13'17" E	140.00

CURVE	RADIUS	LENGTH	CHORD	BEARING	DELTA
C1	1709.00	160.13	160.07	N 23°27'23" W	05°22'52"
C7	2040.00	426.31	426.64	N 29°40'26" W	11°24'37"
C8	2160.00	340.89	340.53	N 19°26'49" W	09°02'32"
C9	2040.00	19.99	19.99	N 21°24'50" W	00°33'41"
C10	45.00	77.22	65.06	N 25°09'44" E	32°35'26"
C11	1071.50	35.36	35.20	S 62°32'05" W	18°50'44"
C12	42.50	58.03	53.62	S 68°16'23" E	78°13'48"
C13	82.50	39.90	39.51	S 35°18'12" E	27°42'35"
C14	1890.00	8.11	8.11	N 21°34'17" W	00°14'45"
C15	2040.00	90.23	90.83	N 19°51'57" W	02°32'04"
C16	2040.00	90.14	90.13	N 17°19'58" W	02°31'54"
C17	2040.00	40.63	40.63	N 19°29'47" W	01°08'28"
C18	45.00	72.63	65.00	N 52°18'17" W	32°28'32"
C19	1071.50	101.25	97.55	S 81°33'33" E	53°58'01"
C20	292.50	25.34	25.34	N 57°03'28" W	04°57'52"
C21	117.50	78.12	76.69	S 40°29'40" E	38°05'30"
C22	100.00	151.91	127.22	S 60°30'29" E	87°02'09"
C23	2100.00	331.42	331.07	N 19°26'49" W	09°02'32"
C24	2100.00	196.86	196.28	N 21°16'57" W	05°22'15"
C25	2100.00	134.58	134.54	N 16°45'41" W	03°40'77"
C26	1872.50	478.34	477.04	N 28°49'30" W	14°38'11"
C27	1872.50	267.51	267.28	N 32°03'02" W	08°11'07"
C28	1872.50	210.83	210.72	N 24°43'56" W	06°27'04"
C29	1890.00	484.73	483.60	N 28°47'45" W	14°41'40"
C30	1855.00	221.27	221.14	N 32°43'33" W	06°50'04"
C31	1855.00	168.30	168.24	N 24°02'52" W	05°11'53"
C32	25.00	40.23	36.03	N 16°47'15" E	32°11'32"
C33	25.00	39.47	35.50	N 71°52'54" W	80°28'11"
C34	1890.00	26.47	26.46	N 35°44'31" W	00°48'08"
C35	1890.00	75.15	75.15	N 34°12'06" W	02°16'42"
C36	1890.00	75.00	74.99	N 31°55'33" W	02°16'25"
C37	1890.00	75.00	74.99	N 29°39'08" W	02°16'25"
C38	1890.00	75.00	74.99	N 27°22'43" W	02°16'25"
C39	1890.00	75.00	74.99	N 25°06'18" W	02°16'25"
C40	1890.00	75.00	74.99	N 22°49'53" W	02°16'25"
C41	1855.00	77.61	77.61	N 34°56'40" W	02°23'50"
C42	1855.00	143.66	143.62	N 31°31'38" W	04°26'14"
C43	1855.00	72.57	72.57	N 25°31'34" W	02°14'29"
C44	1855.00	95.73	95.72	N 22°55'17" W	02°57'25"
C45	267.50	187.82	183.99	N 56°15'28" W	40°13'45"
C46	250.00	175.53	171.95	N 56°15'28" W	40°13'45"
C47	232.50	163.25	159.81	N 56°15'28" W	40°13'45"
C48	267.50	2.30	2.30	N 76°07'33" W	00°29'35"
C49	267.50	70.57	70.37	N 68°19'17" W	15°06'56"
C50	267.50	70.88	70.67	N 53°10'24" W	15°09'51"
C51	267.50	44.07	44.02	N 40°51'47" W	09°26'53"
C52	232.50	63.34	63.14	N 68°34'05" W	15°36'31"
C53	232.50	99.91	99.14	N 48°27'12" W	24°37'14"
C57	1705.00	93.42	93.41	N 22°50'08" W	03°08'22"
C58	1705.00	66.71	66.70	N 25°31'34" W	02°14'30"
C59	2040.00	1.39	1.38	N 35°21'37" W	00°02'20"
C118	2040.00	81.12	81.11	N 34°12'06" W	02°16'42"
C119	2040.00	80.95	80.95	N 31°55'33" W	02°16'25"
C120	2040.00	80.95	80.95	N 29°39'08" W	02°16'25"
C121	2040.00	80.95	80.95	N 27°22'43" W	02°16'25"
C122	2040.00	80.95	80.95	N 25°06'18" W	02°16'25"
C123	2040.00	80.95	80.95	N 22°49'53" W	02°16'25"
C124	2040.00	191.17	191.10	N 21°17'00" W	05°22'10"
C125	2040.00	130.77	130.75	N 16°45'44" W	03°40'22"
C126	2170.00	52.63	52.63	N 22°05'08" W	03°13'31"
C127	2190.00	20.00	20.00	N 21°07'36" W	0°31'24"
C128	2170.00	224.85	224.75	N 17°53'39" W	5°56'12"
C129	2040.00	42.29	42.29	N 23°22'27" W	1°11'16"
C130	2040.00	38.66	38.66	N 22°14'10" W	1°05'09"

D.O.S. 2001-00062

THIS INSTRUMENT WAS PREPARED BY
THOMAS M. MURPHY, P.S.M. #5628

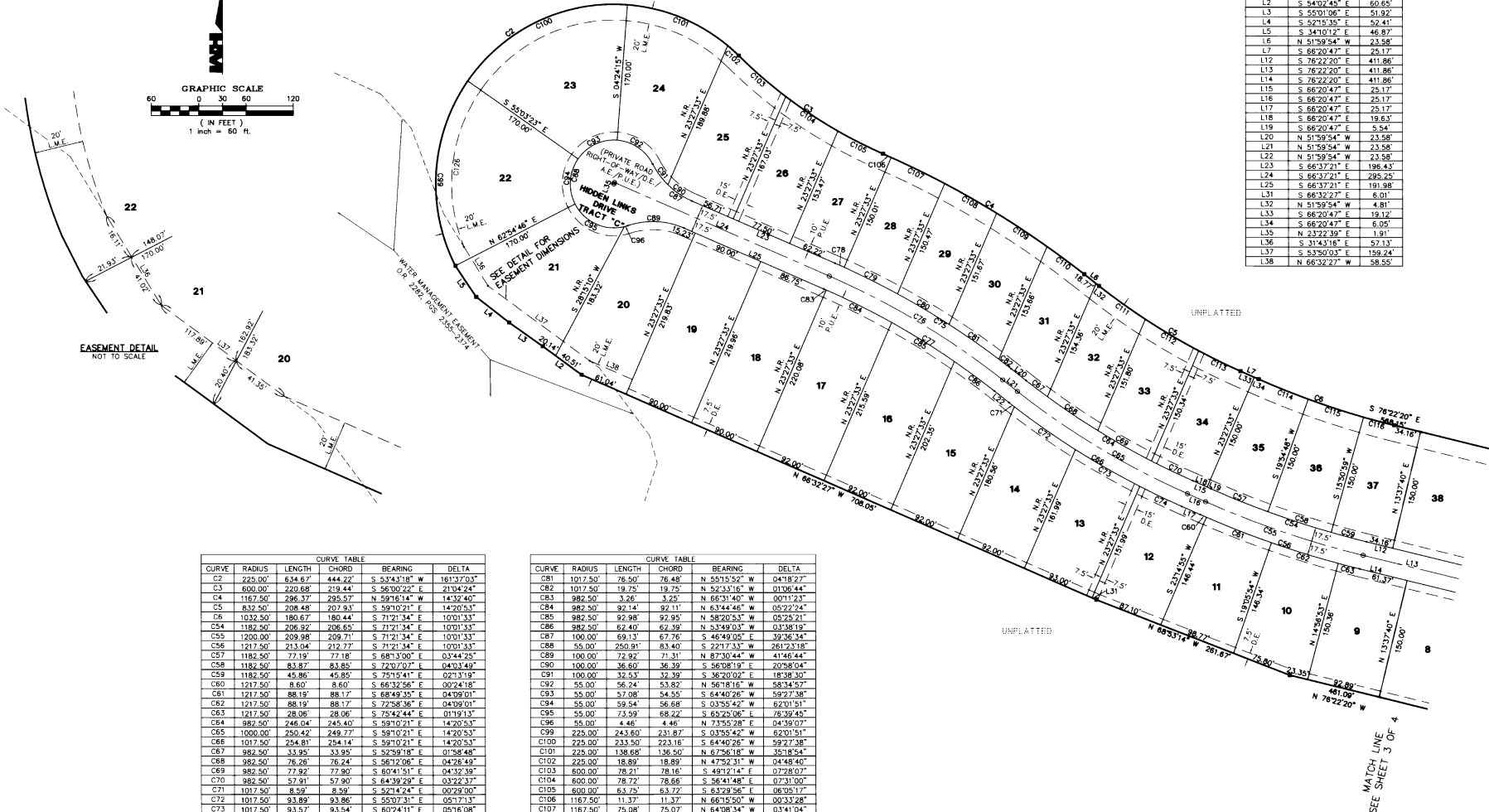
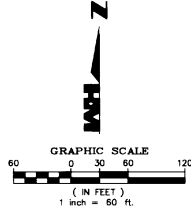
H.M. HOLE MONTES
ENGINEERS PLANNERS SURVEYORS

950 Encore Way
Naples, FL 34110
Phone: (941) 254-2000
Florida Certificate of
Authorization No. 1772

REFERENCE: M.L. 009153 DRAWN BY: K.M.

GATEWAY HIDDEN LINKS II

A SUBDIVISION LOCATED IN A PORTION OF SECTION 1, TOWNSHIP 45 SOUTH,
RANGE 25 EAST, AND A PORTION OF SECTION 6, TOWNSHIP 45 SOUTH,
RANGE 26 EAST, LEE COUNTY, FLORIDA.



LINE	DIRECTION	DISTANCE
L2	S. 54°02'45\"	60.65
L3	S. 55°01'06\"	51.92
L4	S. 52°15'35\"	52.41
L5	S. 34°10'12\"	46.87
L6	N. 51°59'54\" W	23.58
L7	S. 66°20'47\" E	25.17
L12	S. 76°22'20\" E	411.86
L13	S. 76°22'20\" E	411.86
L14	S. 76°22'20\" E	411.86
L15	S. 66°20'47\" E	25.17
L16	S. 66°20'47\" E	25.17
L17	S. 66°20'47\" E	25.17
L18	S. 66°20'47\" E	19.63
L19	S. 66°20'47\" E	5.54
L20	N. 51°59'54\" W	23.58
L21	N. 51°59'54\" W	23.58
L22	N. 51°59'54\" W	23.58
L23	S. 66°37'21\" E	196.43
L24	S. 66°37'21\" E	239.25
L25	S. 66°37'21\" E	159.24
L31	S. 66°32'27\" E	6.01
L32	N. 51°59'54\" W	4.81
L33	S. 66°20'47\" E	19.17
L34	S. 66°20'47\" E	6.05
L35	N. 23°22'39\" E	1.91
L36	S. 31°43'16\" E	57.13
L37	S. 53°50'37\" E	159.24
L38	N. 66°32'27\" W	58.55

CURVE	RADIUS	LENGTH	CHORD	BEARING	DELTA
C2	225.00'	634.62'	444.22'	S. 53°43'18\" W	161°37'03\"
C3	600.00'	220.68'	219.44'	S. 56°00'22\" E	210°42'24\"
C4	1167.50'	286.37'	285.57'	N. 59°26'14\" W	143°2'40\"
C5	832.50'	208.45'	207.93'	S. 59°10'21\" E	142°05'53\"
C6	1032.50'	180.67'	180.44'	S. 71°21'34\" E	100°13'33\"
C54	1182.50'	206.32'	206.55'	S. 71°21'34\" E	100°13'33\"
C55	1000.00'	209.98'	209.71'	S. 71°21'34\" E	100°13'33\"
C56	1217.50'	213.04'	212.77'	S. 71°21'34\" E	100°13'33\"
C57	1182.50'	77.19'	77.18'	S. 68°13'00\" E	03°44'25\"
C58	1182.50'	83.82'	83.85'	S. 72°07'07\" E	04°03'49\"
C59	1182.50'	45.86'	45.85'	S. 72°15'41\" E	02°31'19\"
C60	1217.50'	8.60'	8.60'	S. 66°32'56\" E	00°24'18\"
C61	1217.50'	88.19'	88.17'	S. 68°49'30\" E	04°09'01\"
C62	1217.50'	88.19'	88.17'	S. 72°58'36\" E	04°09'01\"
C63	1217.50'	28.06'	28.06'	S. 75°42'44\" E	01°19'13\"
C64	982.50'	246.04'	245.40'	S. 59°10'21\" E	142°05'53\"
C65	1000.00'	250.42'	249.77'	S. 59°10'21\" E	142°05'53\"
C66	1017.50'	254.81'	254.14'	S. 59°10'21\" E	142°05'53\"
C67	982.50'	33.95'	33.95'	S. 52°59'18\" E	01°58'48\"
C68	982.50'	76.26'	76.24'	S. 56°12'06\" E	04°28'49\"
C69	982.50'	73.92'	73.90'	S. 60°41'51\" E	04°32'38\"
C70	982.50'	57.81'	57.80'	S. 64°39'29\" E	03°22'37\"
C71	1017.50'	8.99'	8.99'	S. 52°14'24\" E	00°29'00\"
C72	1017.50'	93.89'	93.86'	S. 55°07'31\" E	05°17'13\"
C73	1017.50'	93.57'	93.54'	S. 60°24'11\" E	05°16'08\"
C74	1017.50'	58.76'	58.75'	S. 64°41'31\" E	03°18'32\"
C75	1017.50'	259.71'	259.00'	N. 59°18'38\" W	143°17'27\"
C76	1000.00'	252.24'	254.25'	N. 59°18'38\" W	143°17'27\"
C77	982.50'	292.79'	290.09'	N. 59°18'38\" W	143°17'27\"
C78	1017.50'	12.78'	12.78'	N. 66°15'46\" W	00°43'10\"
C79	1017.50'	75.10'	75.09'	N. 63°47'19\" W	04°13'45\"
C80	1017.50'	75.58'	75.56'	N. 59°32'46\" W	04°15'21\"

CURVE	RADIUS	LENGTH	CHORD	BEARING	DELTA
C81	1017.50'	76.50'	76.48'	N. 55°15'52\" W	04°18'27\"
C82	1017.50'	19.75'	19.75'	N. 52°33'16\" W	01°08'44\"
C83	982.50'	3.26'	3.25'	N. 66°31'40\" W	00°12'57\"
C84	982.50'	92.14'	92.11'	N. 63°44'46\" W	05°22'24\"
C85	982.50'	92.98'	92.95'	N. 58°20'53\" W	05°25'21\"
C86	982.50'	62.40'	62.39'	N. 52°49'03\" W	03°38'19\"
C87	1000.00'	69.13'	67.76'	S. 46°49'05\" E	39°36'34\"
C88	55.00'	250.91'	83.40'	S. 22°17'33\" W	261°23'18\"
C89	1000.00'	72.92'	71.31'	N. 87°30'44\" W	41°46'44\"
C90	1000.00'	36.60'	36.39'	S. 56°08'19\" E	20°58'04\"
C91	1000.00'	32.53'	32.39'	S. 36°20'02\" E	18°38'30\"
C92	55.00'	56.24'	53.82'	N. 56°18'16\" E	58°34'57\"
C93	55.00'	57.08'	54.55'	S. 64°40'26\" W	59°27'38\"
C94	55.00'	59.54'	56.68'	S. 03°55'42\" W	62°01'51\"
C95	55.00'	73.59'	68.22'	S. 65°25'06\" E	76°39'45\"
C96	55.00'	4.46'	4.46'	N. 73°55'28\" E	04°39'07\"
C99	225.00'	243.80'	231.87'	S. 03°55'42\" W	62°01'51\"
C100	225.00'	233.50'	223.16'	S. 64°40'26\" W	59°27'38\"
C101	225.00'	138.68'	136.50'	N. 67°56'18\" W	35°18'54\"
C102	225.00'	18.89'	18.89'	N. 47°52'31\" W	04°48'40\"
C103	600.00'	78.21'	78.16'	S. 49°12'14\" E	07°28'27\"
C104	600.00'	78.72'	78.66'	S. 56°41'48\" E	07°31'00\"
C105	600.00'	63.75'	63.72'	S. 63°29'56\" E	06°05'17\"
C106	1187.50'	11.37'	11.37'	N. 66°15'50\" W	00°33'28\"
C107	1187.50'	76.08'	75.07'	N. 64°08'34\" W	03°41'04\"
C108	1187.50'	75.44'	75.43'	N. 60°26'58\" W	03°42'08\"
C109	1187.50'	76.12'	76.11'	N. 56°43'49\" W	03°44'10\"
C110	1187.50'	58.36'	56.35'	S. 53°23'49\" W	02°51'50\"
C111	832.50'	71.95'	71.95'	S. 54°28'18\" W	04°57'07\"
C112	832.50'	78.10'	78.06'	S. 59°38'16\" E	05°22'29\"
C113	832.50'	58.43'	58.42'	S. 64°20'09\" E	04°01'17\"
C114	1032.50'	67.40'	67.39'	N. 64°13'00\" W	03°44'25\"
C115	1032.50'	73.23'	73.21'	S. 72°07'07\" E	04°03'49\"
C116	1032.50'	40.04'	40.04'	S. 75°15'41\" E	02°13'19\"
C116	205.00'	205.87'	197.33'	S. 06°10'28\" W	57°32'18\"

THIS INSTRUMENT WAS PREPARED BY
THOMAS M. MURPHY, P.S.M. #5628



950 Encore Way
Naples, FL 34110
Phone: (941) 254-2000
Florida Certificate of
Authorization No. 1772

D.O.S. 2001 - 00062 08/13/01 (2000.091C)