

INSTR 5284208

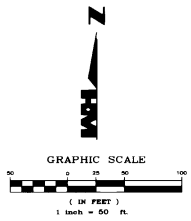
HIDDEN LINKS CONDOMINIUM

LYING IN
SECTION 6, TOWNSHIP 45 SOUTH, RANGE 26 EAST
LEE COUNTY, FLORIDA.

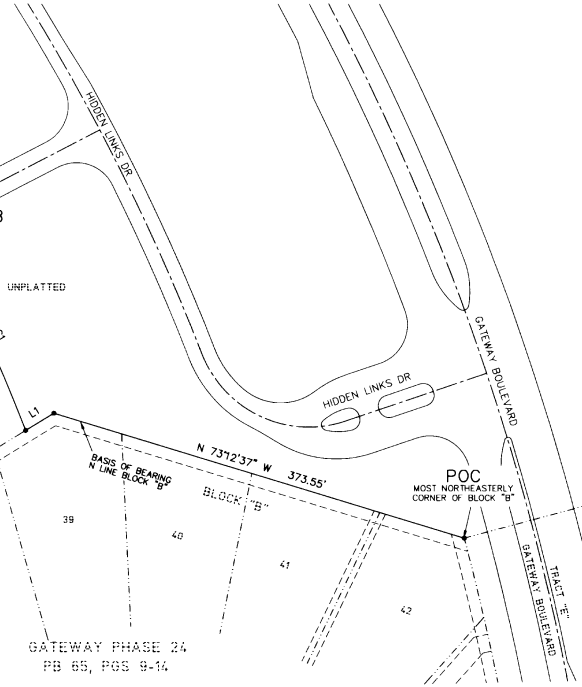
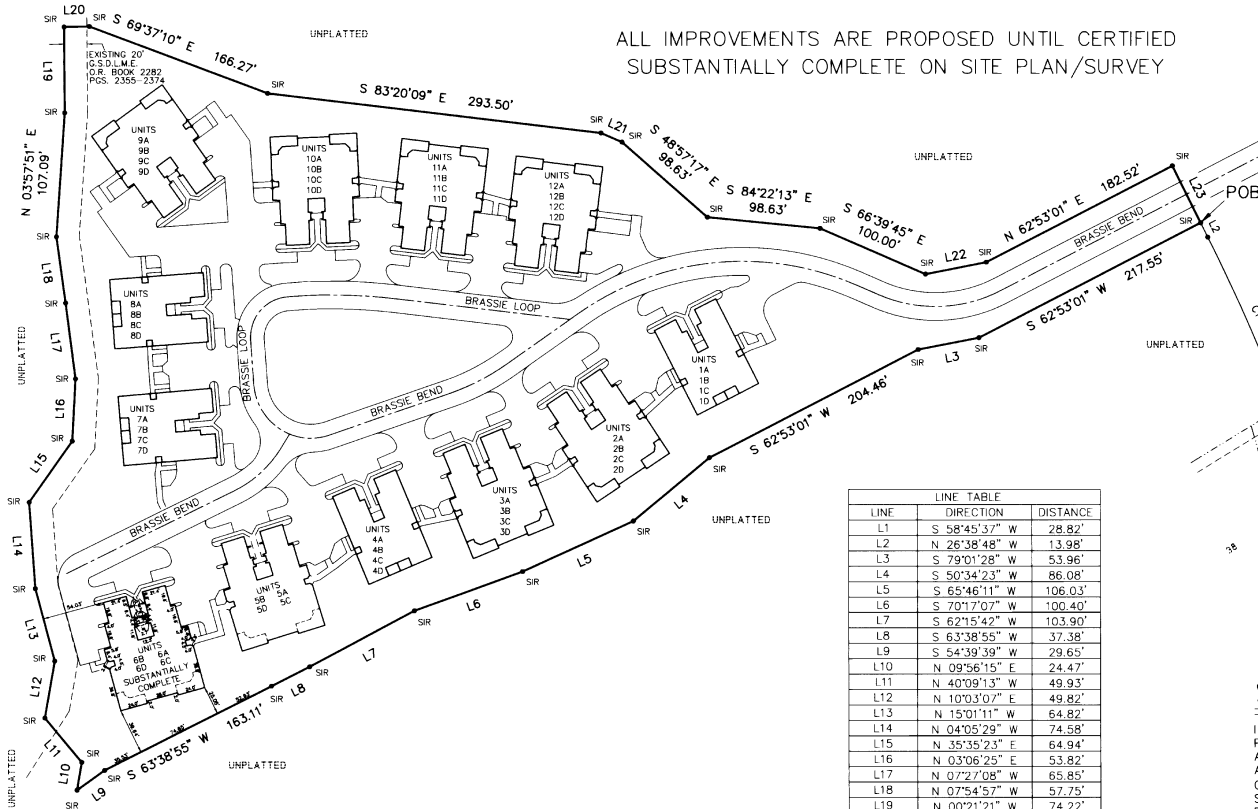
SITE PLAN

UNITS 6A, 6B, 6C, & 6D

PLAT RECORDING
Document: 5284212
Book: OR 3520
Page: 4259
Date: 11/16/2001
Time: 11:11 AM



ALL IMPROVEMENTS ARE PROPOSED UNTIL CERTIFIED
SUBSTANTIALLY COMPLETE ON SITE PLAN/SURVEY



LINE	DIRECTION	DISTANCE
L1	S 58°45'37" W	28.82'
L2	N 26°38'48" W	13.98'
L3	S 79°01'28" W	53.96'
L4	S 50°34'23" W	86.08'
L5	S 65°46'11" W	106.03'
L6	S 70°17'07" W	100.40'
L7	S 62°15'42" W	103.90'
L8	S 63°38'55" W	37.38'
L9	S 54°39'39" W	29.65'
L10	N 09°56'15" E	24.47'
L11	N 40°09'13" W	49.93'
L12	N 10°03'07" E	49.82'
L13	N 15°01'11" W	64.82'
L14	N 04°05'29" W	74.58'
L15	N 35°35'23" E	64.94'
L16	N 03°06'25" E	53.82'
L17	N 07°27'08" W	65.85'
L18	N 07°54'57" W	57.75'
L19	N 00°21'21" W	74.22'
L20	N 88°54'02" E	22.12'
L21	S 66°39'45" E	20.00'
L22	N 79°01'28" E	53.96'
L23	S 26°38'48" E	55.00'

CURVE	RADIUS	LENGTH	CHORD	BEARING	DELTA
C1	1705.00'	180.12'	160.07'	N 23°57'23" W	5°22'51"

LEGEND

- POC POINT OF COMMENCEMENT
- POB POINT OF BEGINNING
- SIR SET IRON ROD W/CAP LB 1772
- G.S.D.L.M.E. GATEWAY SERVICES DISTRICT LAKE MAINTENANCE EASEMENT
- POINT OF INTERSECTION, POINT OF CURVATURE, POINT OF TANGENCY, POINT OF COMPOUND CURVATURE OR POINT OF REVERSE CURVATURE.

ALL DIMENSIONS ARE IN FEET AND DECIMALS THEREOF.
UNLESS OTHERWISE NOTED ALL CURVES ARE TANGENTIAL AND CIRCULAR.
ELEVATIONS REFER TO THE NATIONAL GEODETIC VERTICAL DATUM (N.G.V.D.) OF 1929.

SURVEYOR'S CERTIFICATION:

I HEREBY CERTIFY THAT THE CONSTRUCTION OF UNITS 6A, 6B, 6C AND 6D AND THE PLANNED IMPROVEMENTS, INCLUDING, BUT NOT LIMITED TO LANDSCAPING, UTILITY SERVICES AND ACCESS TO SAID UNITS AND ALL COMMON ELEMENTS SERVING SAID UNITS 6A, 6B, 6C AND 6D ARE SUBSTANTIALLY COMPLETE AND THIS PLAT OF HIDDEN LINKS CONDOMINIUM CONSISTING OF TWO (2) SHEETS TOGETHER WITH THE DECLARATION OF CONDOMINIUM IS IN SUFFICIENT DETAIL TO IDENTIFY SAID COMMON ELEMENTS AND SAID UNITS AND THEIR RELATIVE LOCATIONS AND APPROXIMATE DIMENSIONS.

THE CONSTRUCTION OF THE CONDOMINIUM IS NOT SUBSTANTIALLY COMPLETE.

HOLE MONTES, INC.
CERTIFICATE OF AUTHORIZATION NUMBER LB 1772

DATE: 11/16/01

Thomas M. Murphy
THOMAS M. MURPHY

THIS INSTRUMENT WAS PREPARED BY
THOMAS M. MURPHY, P.S.M. #5628

