

GATEWAY PHASE 24

A SUBDIVISION LOCATED IN

SECTIONS 6 & 7, TOWNSHIP 45 SOUTH, RANGE 26 EAST
LEE COUNTY, FLORIDA.

PLAT BOOK <u>65</u>	PAGE <u>9</u>
SHEET 1 of	6

DEDICATION

KNOW ALL MEN BY THESE PRESENTS THAT BAY COLONY-GATEWAY, INC., A DELAWARE CORPORATION, QUALIFIED TO DO BUSINESS IN THE STATE OF FLORIDA, THE OWNER OF THE LANDS DESCRIBED HEREIN HAS CAUSED THIS PLAT OF GATEWAY PHASE 24, A SUBDIVISION LOCATED IN SECTIONS 6 AND 7, TOWNSHIP 45 SOUTH, RANGE 26 EAST, LEE COUNTY, FLORIDA, TO BE MADE, AND DOES HEREBY MAKE THE FOLLOWING DEDICATIONS:

TO THE GATEWAY GREENS COMMUNITY ASSOCIATION, INC., A FLORIDA NOT-FOR-PROFIT CORPORATION, FOR THE BENEFIT OF ITS PRESENT AND FUTURE MEMBERS, ITS SUCCESSORS AND ASSIGNS, AND THEIR TENANTS, INVITEES, LICENSEES, MORTGAGEES AND EMPLOYEES, ALL OF THE PRIVATE ROAD RIGHTS-OF-WAY OF MAHOGANY RUN, LAKE RUN DRIVE, VENICIA DRIVE, WALDEN LAKES DRIVE AND WALDEN RUN DRIVE (HEREIN REFERRED TO AS TRACT "A"), FOR PRIVATE STREET PURPOSES, SUBJECT TO THE DEDICATION OF A DRAINAGE EASEMENT ON, OVER, ACROSS OR UNDER SAID TRACT "A", TOGETHER WITH LANDSCAPING AND SIGNAGE IMPROVEMENTS NOW OR HEREINAFTER CONTAINED THEREIN, FOR THE PURPOSES OF INGRESS AND EGRESS, MAINTENANCE, REPAIR AND REPLACEMENT OF ROAD, LANDSCAPING AND SIGNAGE, RESERVING UNTO BAY COLONY-GATEWAY, INC., ITS SUCCESSORS AND ASSIGNS, EMPLOYEES AND INVITEES, A PERPETUAL RIGHT FOR INGRESS AND EGRESS ON AND OVER SAID TRACT "A".

TO THE PUBLIC, ALL OF THE ROAD RIGHT-OF-WAY OF GATEWAY BOULEVARD (HEREIN REFERRED TO AS TRACT "E") FOR PUBLIC STREET PURPOSES, SUBJECT TO THE DEDICATION OF A DRAINAGE EASEMENT ON, OVER, ACROSS OR UNDER SAID TRACT "E", GRANTED TO GATEWAY SERVICES DISTRICT, ITS SUCCESSORS AND ASSIGNS, AND SUBJECT TO EASEMENTS DEPICTED ON TRACT "E" AS DEDICATED BELOW.

TO THE GATEWAY SERVICES DISTRICT, ITS SUCCESSORS AND ASSIGNS, ALL OF TRACT "D" (WATER MANAGEMENT TRACT) FOR THE PURPOSES OF WATER MANAGEMENT, DRAINAGE AND/OR LAKE MAINTENANCE.

TO THE GATEWAY SERVICES DISTRICT, ITS SUCCESSORS AND ASSIGNS, ALL EASEMENTS HEREIN LABELED "LAKE MAINTENANCE EASEMENT" (INCLUDING PART OF LOTS 1 THROUGH 48, BLOCK "A", INCLUSIVE, PART OF LOTS 1 THROUGH 33, BLOCK "B", INCLUSIVE, AND PART OF TRACTS "F" AND "G") AS SHOWN ON THIS PLAT AS A LAKE MAINTENANCE EASEMENT, FOR PURPOSES OF WATER MANAGEMENT, DRAINAGE AND/OR LAKE MAINTENANCE.

TO THE GATEWAY SERVICES DISTRICT, ITS SUCCESSORS AND ASSIGNS, ALL EASEMENTS HEREIN LABELED "LAKE ACCESS EASEMENT" (INCLUDING ALL OF TRACTS "F" AND "G") AS SHOWN ON THIS PLAT AS A LAKE ACCESS EASEMENT FOR PURPOSES OF INGRESS AND EGRESS FOR PERSONNEL AND EQUIPMENT TO PROVIDE LAKE MAINTENANCE.

TO THE GATEWAY GREENS COMMUNITY ASSOCIATION, INC., A FLORIDA NOT-FOR-PROFIT CORPORATION, FOR THE BENEFIT OF ITS PRESENT AND FUTURE MEMBERS, ITS SUCCESSORS AND ASSIGNS, AND THEIR TENANTS, INVITEES, LICENSEES, MORTGAGEES AND EMPLOYEES, ALL OF TRACTS "B", "C", "F" AND "G" (LANDSCAPE BUFFER TRACTS) FOR THE PURPOSES OF INSTALLATION, REPAIR AND MAINTENANCE OF LANDSCAPING AND SIGNAGE SUBJECT TO LAKE ACCESS EASEMENT (L.A.E.) AS DEPICTED AND DEDICATED HEREIN.

TO THE GATEWAY GREENS COMMUNITY ASSOCIATION, INC., A FLORIDA NOT-FOR-PROFIT CORPORATION, FOR THE BENEFIT OF ITS PRESENT AND FUTURE MEMBERS, ITS SUCCESSORS AND ASSIGNS, AND THEIR TENANTS, INVITEES, LICENSEES, MORTGAGEES AND EMPLOYEES, ALL EASEMENTS HEREIN LABELED "LANDSCAPE TRANSITION YARD AND PRIVACY WALL EASEMENT" (INCLUDING PART OF TRACTS "B" AND "C") AS SHOWN ON THIS PLAT AS A LANDSCAPE TRANSITION YARD AND PRIVACY WALL EASEMENT FOR PURPOSES OF CONSTRUCTION, INSTALLATION, REPAIR AND MAINTENANCE OF PRIVACY WALLS AND LANDSCAPING.

TO THE GATEWAY SERVICES DISTRICT, ITS SUCCESSORS AND ASSIGNS, ALL EASEMENTS HEREIN LABELED "GATEWAY SERVICES DISTRICT DRAINAGE EASEMENT" (INCLUDING ALL OF TRACTS "A", "E", "F" AND "G", AND PART OF LOTS 7, 8, 22, 23, 27, 28, 42, 43, 46 AND 47, BLOCK "A" AND 6, 7, 18, 19, 23, 24, 28 AND 29, BLOCK "B", AS SHOWN ON THIS PLAT AS A GATEWAY SERVICES DISTRICT DRAINAGE EASEMENT FOR PURPOSES OF INSTALLATION, REPAIR AND MAINTENANCE OF ITS DRAINAGE FACILITIES WITHIN SAID DRAINAGE EASEMENTS.

TO THE GATEWAY SERVICES DISTRICT, ITS SUCCESSORS AND ASSIGNS, AND TO THE RESPECTIVE GOVERNMENTAL AGENCIES AND LICENSED PRIVATE AND PUBLIC UTILITIES HAVING THE AUTHORITY TO PROVIDE FOR SUCH SERVICES, ALL EASEMENTS HEREIN LABELED "PUBLIC UTILITY EASEMENT" (INCLUDING ALL OF TRACTS "A" AND "E", PART OF TRACTS "B", "C", "F" AND "G", AND PART OF ALL LOTS IN BLOCKS "A" AND "B") AS SHOWN ON THIS PLAT AS A PUBLIC UTILITY EASEMENT, FOR PURPOSES OF CONSTRUCTION, INSTALLATION, REPAIR, MAINTENANCE AND OPERATION OF THEIR RESPECTIVE FACILITIES, INCLUDING WATER, SEWER, IRRIGATION, STREET LIGHTS, ELECTRIC, GAS, CABLE TELEVISION AND TELEPHONE.

TO THE GATEWAY SERVICES DISTRICT, ITS SUCCESSORS AND ASSIGNS, AND TO THE RESPECTIVE GOVERNMENTAL AGENCIES AND PUBLIC UTILITIES HAVING THE AUTHORITY TO PROVIDE FOR SUCH SERVICES, A NON-EXCLUSIVE ACCESS EASEMENT ON, OVER AND ACROSS TRACTS "A" AND "E" FOR THE SOLE PURPOSE OF GAINING ACCESS TO THEIR RESPECTIVE FACILITIES WITHIN SAID DRAINAGE, LAKE MAINTENANCE AND UTILITY EASEMENTS SHOWN HEREON.

IN WITNESS WHEREOF, BAY COLONY-GATEWAY, INC., A DELAWARE CORPORATION, QUALIFIED TO DO BUSINESS IN THE STATE OF FLORIDA, HAS CAUSED THESE PRESENTS TO BE MADE AND SIGNED IN ITS NAME BY ITS SENIOR VICE PRESIDENT AND ATTESTED TO BY ITS SECRETARY THIS 21st DAY OF OCTOBER, 1999.

BAY COLONY-GATEWAY, INC.
A DELAWARE CORPORATION

BY: Sylvia Di Folco
WITNESS: Sylvia Di Folco
PRINTED NAME: Sylvia Di Folco
SENIOR VICE PRESIDENT

BY: David W. Caldwell
WITNESS: David W. Caldwell
PRINTED NAME: David W. Caldwell

BY: Laurel Y. Siterly
WITNESS: Laurel Y. Siterly
PRINTED NAME: Laurel Y. Siterly
SECRETARY

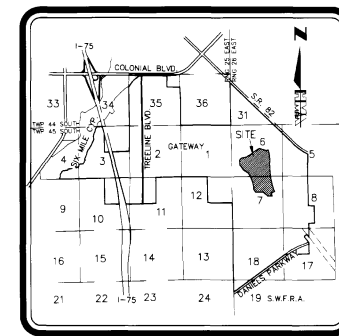
BY: Melanie Soure
WITNESS: Melanie Soure
PRINTED NAME: Melanie Soure

NOTICE:

THIS PLAT, AS RECORDED IN ITS GRAPHIC FORM, IS THE OFFICIAL DEPICTION OF THE SUBDIVIDED LANDS DESCRIBED HEREIN AND WILL IN NO CIRCUMSTANCES BE SUPPLANTED IN AUTHORITY BY ANY OTHER GRAPHIC OR DIGITAL FORM OF THE PLAT. THERE MAY BE ADDITIONAL RESTRICTIONS THAT ARE NOT RECORDED ON THIS PLAT THAT MAY BE FOUND IN THE PUBLIC RECORDS OF THIS COUNTY.

NOTICE:

LANDS DESCRIBED IN THIS PLAT MAY BE SUBDIVIDED BY THE DEVELOPER WITHOUT THE ROADS, DRAINAGE, WATER AND SEWER FACILITIES BEING ACCEPTED FOR MAINTENANCE BY LEE COUNTY. ANY PURCHASER OF A LOT IN THIS SUBDIVISION IS ADVISED TO DETERMINE WHETHER THE LOT MAY BE SUBJECT TO ASSESSMENT OR CALLED UPON TO BEAR A PORTION OF OR ALL OF THE EXPENSE OF CONSTRUCTION, MAINTENANCE OR IMPROVEMENT OF ROADS, DRAINAGE, WATER AND SEWER FACILITIES.



LOCATION MAP
NOT TO SCALE

CERTIFICATION 4751638

I HEREBY CERTIFY THAT THE ATTACHED PLAT OF GATEWAY PHASE 24, A SUBDIVISION LOCATED IN SECTIONS 6 AND 7, TOWNSHIP 45 SOUTH, RANGE 26 EAST, LEE COUNTY, FLORIDA WAS FILED FOR RECORD AT 9:50 A.M. THIS 10th DAY OF November 1999 AND DULY RECORDED IN PLAT BOOK 65 AT PAGES 9 THROUGH 14 OF THE PUBLIC RECORDS OF LEE COUNTY, FLORIDA.

Charlie Green
CLERK OF CIRCUIT COURT
IN AND FOR LEE COUNTY
PRINTED NAME: Charlie Green

ACKNOWLEDGEMENT

STATE OF FLORIDA
COUNTY OF LEE

THE FOREGOING DEDICATION WAS ACKNOWLEDGED BEFORE ME THIS 27th DAY OF OCTOBER, 1999 BY JERRY H. SCHMIDT, SENIOR VICE PRESIDENT AND WYEN N. HASTINGS, SECRETARY OF BAY COLONY-GATEWAY, INC., A DELAWARE CORPORATION, QUALIFIED TO DO BUSINESS IN THE STATE OF FLORIDA. ON BEHALF OF THE CORPORATION, THEY ARE PERSONALLY KNOWN TO ME TO BE THE PERSONS DESCRIBED IN AND WHO EXECUTED THE FOREGOING DEDICATION AND ACKNOWLEDGED THE EXECUTION THEREOF TO BE THEIR FREE ACT AND DEED AS SUCH OFFICERS FOR THE USES AND PURPOSES THEREIN MENTIONED AND THAT SAID DEDICATION IS THE ACT AND DEED OF SAID CORPORATION.

Laurel Y. Siterly
NOTARY PUBLIC - STATE OF FLORIDA

Laurel Y. SITERLY
NAME (PRINTED)
CC 72196
COMMISSION # 3-3-2002
COMMISSION EXPIRES

GATEWAY SERVICES DISTRICT

THE DISTRICT HEREBY ACKNOWLEDGES ACCEPTANCE OF EASEMENTS DEDICATED ON THIS PLAT AND DRAINAGE OF ALL LANDS CONTAINED WITHIN THIS PLAT.

WITNESSES AS TO BOTH

David W. Caldwell
NAME: David W. Caldwell
PRINTED NAME: David W. Caldwell

Ray Judah
NAME: Ray Judah
PRINTED NAME: Ray Judah

Craig Bloxham
NAME: Craig Bloxham
PRINTED NAME: Craig Bloxham
CHAIRMAN, GATEWAY SERVICES DISTRICT

Robin Martin
NAME: Robin Martin
PRINTED NAME: Robin Martin
SECRETARY, GATEWAY SERVICES DISTRICT

REVIEW BY THE DESIGNATED COUNTY PSM DETERMINED THAT THIS PLAT CONFORMS TO THE REQUIREMENTS OF FLORIDA STATUTES CHAPTER 177, PART 1.

Thomas M. Murphy
TITLE: P.S.M.
PRINTED NAME: Tom Davis

SURVEYOR'S CERTIFICATION

I HEREBY CERTIFY THAT THE ATTACHED PLAT OF GATEWAY PHASE 24, A SUBDIVISION LOCATED IN SECTIONS 6 AND 7, TOWNSHIP 45 SOUTH, RANGE 26 EAST, LEE COUNTY, FLORIDA WAS PREPARED UNDER MY DIRECTION AND SUPERVISION AND COMPLEES WITH ALL OF THE SURVEY REQUIREMENTS OF CHAPTER 177, PART 1, FLORIDA STATUTES. I FURTHER CERTIFY THAT THE PERMANENT REFERENCE MONUMENTS (P.R.M.S.) HAVE BEEN PLACED AT THE LOCATIONS SHOWN ON THIS PLAT AND THAT THE PERMANENT CONTROL POINTS (P.C.P.S.) AND INTERNAL MONUMENTATION WILL BE SET IN ACCORDANCE WITH CHAPTER 177, PART 1, FLORIDA STATUTES.

HOLE, MONTES AND ASSOCIATES,
THOMAS M. MURPHY
P.S.M. # 5628 STATE OF FLORIDA

THIS INSTRUMENT WAS PREPARED BY
THOMAS M. MURPHY, P.S.M. #5628

HMA HOLE, MONTES & ASSOCIATES
ENGINEERS-PLANNERS-SURVEYORS
NAPLES-FORT MYERS-BONITA SPRINGS
10550 ABERNATHY STREET, BONITA SPRINGS, FLORIDA (941) 992-0795

D.O. # 99-01-174.000 10/17/99 (1998)27

GATEWAY PHASE 24
A SUBDIVISION LOCATED IN
SECTIONS 6 & 7, TOWNSHIP 45 SOUTH, RANGE 26 EAST
LEE COUNTY, FLORIDA.

PROPERTY DESCRIPTION:

A PORTION OF SECTIONS 6 AND 7, TOWNSHIP 45 SOUTH, RANGE 26 EAST, LEE COUNTY, FLORIDA, BEING MORE PARTICULARLY DESCRIBED AS FOLLOWS:

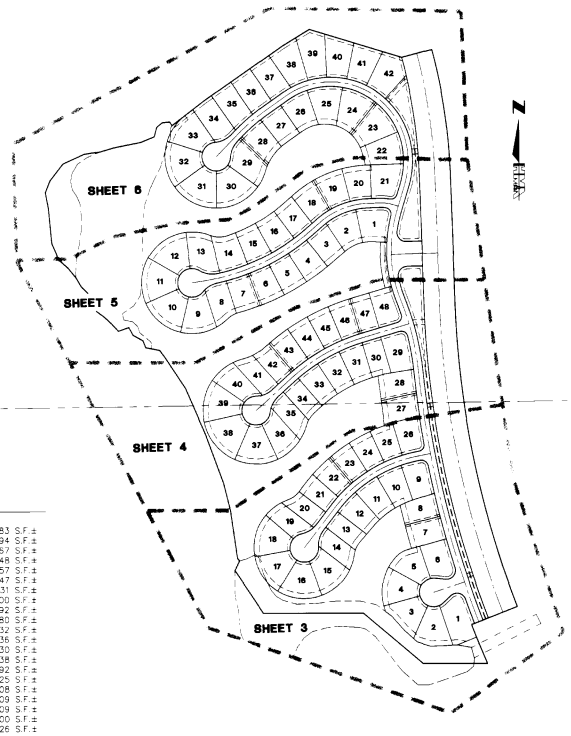
BEGIN AT THE NORTHEAST CORNER OF GATEWAY PHASE 4, ACCORDING TO THE PLAT THEREOF RECORDED IN PLAT BOOK 43 AT PAGES 67 THROUGH 73 OF THE PUBLIC RECORDS OF LEE COUNTY, FLORIDA; THENCE RUN S.68°43'47"W, ALONG THE NORTHERLY BOUNDARY OF SAID GATEWAY PHASE 4, FOR A DISTANCE OF 190.00 FEET TO A POINT ON A CIRCULAR CURVE, CONCAVE NORTHEASTERLY, WHOSE RADIUS POINT BEARS N.68°43'47"E, A DISTANCE OF 3,730.00 FEET THEREFROM; THENCE RUN SOUTHEASTERLY ALONG THE NORTHERLY BOUNDARY OF SAID GATEWAY PHASE 4 AND ALONG THE ARC OF SAID CURVE TO THE LEFT, HAVING A RADIUS OF 3,730.00 FEET, THROUGH A CENTRAL ANGLE OF 02°29'00", SUBTENDED BY A CHORD OF 161.66 FEET AT A BEARING OF S.22°30'43"E, FOR A DISTANCE OF 161.67 FEET TO THE END OF SAID CURVE; THENCE RUN WEST, ALONG THE NORTHERLY BOUNDARY OF SAID GATEWAY PHASE 4, FOR A DISTANCE OF 250.00 FEET; THENCE RUN N.50°00'00"W, ALONG THE NORTHERLY BOUNDARY OF SAID GATEWAY PHASE 4, FOR A DISTANCE OF 300.00 FEET; THENCE RUN WEST, ALONG THE NORTHERLY BOUNDARY OF SAID GATEWAY PHASE 4, FOR A DISTANCE OF 387.62 FEET; THENCE RUN N.34°07'20"W, FOR A DISTANCE OF 197.49 FEET; THENCE RUN N.05°56'12"E, FOR A DISTANCE OF 41.24 FEET; THENCE RUN N.40°19'04"W, FOR A DISTANCE OF 112.53 FEET; THENCE RUN N.08°16'36"W, FOR A DISTANCE OF 188.26 FEET; THENCE RUN N.14°10'40"W, FOR A DISTANCE OF 110.22 FEET; THENCE RUN N.20°23'56"W, FOR A DISTANCE OF 196.27 FEET; THENCE RUN N.23°46'34"W, FOR A DISTANCE OF 192.15 FEET; THENCE RUN N.32°50'07"W, FOR A DISTANCE OF 143.35 FEET; THENCE RUN N.38°42'41"W, FOR A DISTANCE OF 34.16 FEET; THENCE RUN N.79°23'16"W, FOR A DISTANCE OF 54.80 FEET; THENCE RUN N.22°07'39"W, FOR A DISTANCE OF 28.67 FEET; THENCE RUN N.60°58'10"W, FOR A DISTANCE OF 43.63 FEET; THENCE RUN N.28°30'20"W, FOR A DISTANCE OF 34.62 FEET; THENCE RUN S.70°18'53"W, FOR A DISTANCE OF 42.79 FEET; THENCE RUN N.43°25'24"W, FOR A DISTANCE OF 38.17 FEET; THENCE RUN N.47°09'27"W, FOR A DISTANCE OF 37.92 FEET; THENCE RUN N.53°24'14"W, FOR A DISTANCE OF 35.91 FEET; THENCE RUN N.25°45'22"W, FOR A DISTANCE OF 45.12 FEET; THENCE RUN N.25°12'27"W, FOR A DISTANCE OF 30.68 FEET; THENCE RUN N.48°58'46"W, FOR A DISTANCE OF 34.54 FEET; THENCE RUN N.30°19'54"W, FOR A DISTANCE OF 39.87 FEET; THENCE RUN N.38°59'58"W, FOR A DISTANCE OF 46.62 FEET; THENCE RUN N.48°53'53"W, FOR A DISTANCE OF 48.57 FEET; THENCE RUN N.28°56'31"W, FOR A DISTANCE OF 68.52 FEET; THENCE RUN N.05°31'54"W, FOR A DISTANCE OF 138.93 FEET; THENCE RUN N.10°58'12"W, FOR A DISTANCE OF 58.68 FEET; THENCE RUN N.21°18'58"E, FOR A DISTANCE OF 48.92 FEET; THENCE RUN N.27°42'33"E, FOR A DISTANCE OF 82.48 FEET; THENCE RUN N.85°43'00"E, FOR A DISTANCE OF 90.00 FEET; THENCE RUN N.81°03'37"E, FOR A DISTANCE OF 60.26 FEET; THENCE RUN N.73°54'53"E, FOR A DISTANCE OF 60.45 FEET; THENCE RUN N.79°01'51"E, FOR A DISTANCE OF 102.24 FEET; THENCE RUN N.88°00'52"E, FOR A DISTANCE OF 88.18 FEET; THENCE RUN N.148°33'7"E, FOR A DISTANCE OF 37.27 FEET; THENCE RUN N.49°12'39"E, FOR A DISTANCE OF 27.49 FEET; THENCE RUN N.84°28'58"E, FOR A DISTANCE OF 29.46 FEET; THENCE RUN S.33°33'08"E, FOR A DISTANCE OF 16.97 FEET; THENCE RUN N.52°22'37"E, FOR A DISTANCE OF 156.00 FEET; THENCE RUN N.55°12'01"E, FOR A DISTANCE OF 369.22 FEET; THENCE RUN N.58°43'37"E, FOR A DISTANCE OF 122.47 FEET; THENCE RUN S.73°12'37"E, FOR A DISTANCE OF 373.55 FEET; THENCE RUN N.75°04'27"E, FOR A DISTANCE OF 120.00 FEET TO A POINT ON A CIRCULAR CURVE, CONCAVE WESTERLY, WHOSE RADIUS POINT BEARS S.79°04'27"W, A DISTANCE OF 2,160.00 FEET THEREFROM; THENCE RUN SOUTHERLY ALONG THE ARC OF SAID CURVE TO THE RIGHT, HAVING A RADIUS OF 2,160.00 FEET, THROUGH A CENTRAL ANGLE OF 12°54'33", SUBTENDED BY A CHORD OF 485.63 FEET AT A BEARING OF S.08°28'16"E, FOR A DISTANCE OF 486.66 FEET TO THE END OF SAID CURVE; THENCE RUN S.02°01'00"E, FOR A DISTANCE OF 900.00 FEET TO THE BEGINNING OF A TANGENTIAL CIRCULAR CURVE, CONCAVE EASTERLY; THENCE RUN SOUTHERLY ALONG THE ARC OF SAID CURVE TO THE LEFT, HAVING A RADIUS OF 3,440.00 FEET, THROUGH A CENTRAL ANGLE OF 1°19'15", SUBTENDED BY A CHORD OF 1,183.98 FEET AT A BEARING OF S.11°38'36"E, FOR A DISTANCE OF 1,189.57 FEET TO THE POINT OF BEGINNING; CONTAINING 59.605 ACRES, MORE OR LESS.

NOTES:

1. ALL DIMENSIONS ARE IN FEET AND DECIMALS THEREOF.
2. BASIS FOR BEARING REFER TO THE NORTH LINE OF TRACT "E", GATEWAY PHASE 4, ACCORDING TO THE PLAT THEREOF RECORDED IN PLAT BOOK 43, PAGES 67-73, LEE COUNTY, FLORIDA, AS BEING S.68°43'47" W.
3. ■ INDICATES SET PERMANENT REFERENCE MONUMENT (PRM).
4. □ INDICATES FOUND MONUMENT.
5. ■ INDICATES MONUMENT NOT SET.
6. ■ INDICATES PERMANENT CONTROL POINT (PCP).
7. ■ INDICATES POINT OF INTERSECTION, POINT OF CURVATURE, POINT OF TANGENCY, POINT OF COMPOUND CURVATURE OR POINT OF REVERSE CURVE, AS REQUIRED BY CHAPTER 177, PART I, FLORIDA STATUTES.
8. N/R. INDICATES NON-RADIAL LINE.
9. D.E. = DRAINAGE EASEMENT.
10. G.S.D.D.E. = GATEWAY SERVICES DRAINAGE DISTRICT EASEMENT.
11. P.U.E. = PUBLIC UTILITY EASEMENT.
12. L.A.E. = LAKE ACCESS EASEMENT.
13. A.E. = ACCESS EASEMENT.
14. L.M.E. = LAKE MAINTENANCE EASEMENT.
15. L.T.V.P.W.E. = LANDSCAPE TRANSITION YARD AND PRIVACY WALL EASEMENT.

AREA TABLE

BLOCK A		BLOCK B	
1	1,384.84 S.F. ±	1	5,108.71 S.F. ±
2	16,260.33 S.F. ±	2	13,446.80 S.F. ±
3	14,475.42 S.F. ±	3	12,145.86 S.F. ±
4	14,249.02 S.F. ±	4	12,063.61 S.F. ±
5	13,642.15 S.F. ±	5	12,084.32 S.F. ±
6	14,809.21 S.F. ±	6	12,415.66 S.F. ±
7	12,828.63 S.F. ±	7	12,201.36 S.F. ±
8	12,061.65 S.F. ±	8	2,813.11 S.F. ±
9	13,028.63 S.F. ±	9	15,035.75 S.F. ±
10	12,515.25 S.F. ±	10	16,210.22 S.F. ±
11	12,575.68 S.F. ±	11	16,366.92 S.F. ±
12	12,615.08 S.F. ±	12	16,249.43 S.F. ±
13	10,567.64 S.F. ±	13	15,471.88 S.F. ±
14	11,622.59 S.F. ±	14	13,228.97 S.F. ±
15	15,270.71 S.F. ±	15	12,214.82 S.F. ±
16	15,909.05 S.F. ±	16	12,330.78 S.F. ±
17	14,810.59 S.F. ±	17	11,883.15 S.F. ±
18	15,416.63 S.F. ±	18	12,573.82 S.F. ±
19	11,957.01 S.F. ±	19	13,174.10 S.F. ±
20	10,440.50 S.F. ±	20	12,378.07 S.F. ±
21	10,381.05 S.F. ±	21	15,245.7 S.F. ±
22	10,907.36 S.F. ±		
23	10,807.36 S.F. ±		
24	10,907.36 S.F. ±		
25	10,907.36 S.F. ±	TRACT A	PRIVATE ROADWAY 232,113.41 S.F. ±
26	12,689.68 S.F. ±	TRACT B	LANDSCAPE AREA 43,647.98 S.F. ±
27	12,608.57 S.F. ±	TRACT C	LANDSCAPE AREA 33,457.01 S.F. ±
28	14,240.02 S.F. ±	TRACT D	WATER MANAGEMENT AREA 755,925.78 S.F. ±
29	14,325.45 S.F. ±	TRACT E	PUBLIC ROADWAY 262,042.36 S.F. ±
30	10,545.55 S.F. ±	TRACT F	LANDSCAPE AREA 4,356.00 S.F. ±
31	11,966.99 S.F. ±	TRACT G	LANDSCAPE AREA 4,443.12 S.F. ±
32	11,854.89 S.F. ±		
		TOTAL AREA	1,375,188.68 S.F. ±



KEY MAP
NOT TO SCALE

THIS INSTRUMENT WAS PREPARED BY
THOMAS M. MURPHY, P.S.M. #5628

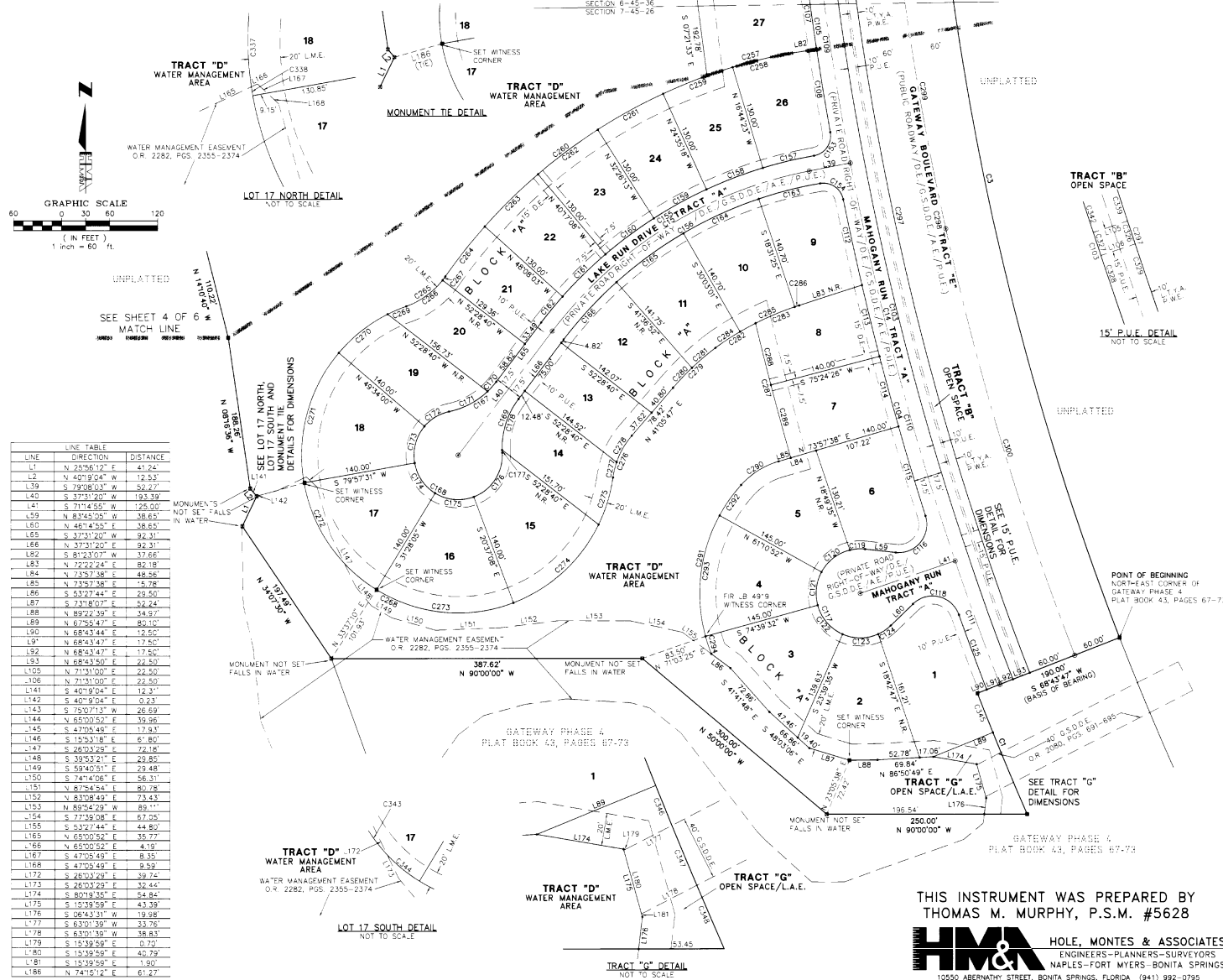
HMA HOLE, MONTES & ASSOCIATES
ENGINEERS-PLANNERS-SURVEYORS
NAPLES-FORT MYERS-BONITA SPRINGS
10250 ABERNATHY STREET, BONITA SPRINGS, FLORIDA (941) 992-0795

D.O. # 99-01-174.000 9/28/99 (1998174)

GATEWAY PHASE 24

A SUBDIVISION LOCATED IN
SECTIONS 6 & 7, TOWNSHIP 45 SOUTH, RANGE 26 EAST
LEE COUNTY, FLORIDA.

CURVE	RADIUS	LENGTH	CH-ORD	BEARING	DELTA
C1	3730.00	161.67	161.66	S 22°30'43" E	02°29'00"
C2	3549.00	186.31	186.30	S 11°58'36" E	08°58'36"
C3	3700.00	994.25	991.26	S 1°33'19" E	15°23'47"
C4	3300.00	384.92	376.52	S 58°19'41" W	41°36'43"
C103	3682.50	989.55	986.57	S 1°04'13" E	15°23'47"
C104	3717.50	404.69	400.49	S 14°16'31" E	06°14'41"
C105	3717.50	28.77	28.70	S 08°02'43" E	04°20'34"
C107	3717.50	92.90	92.90	S 07°53'56" E	01°28'58"
C108	3717.50	131.83	131.82	S 09°24'57" E	01°38'06"
C109	3700.00	332.37	329.27	S 08°24'12" E	04°59'11"
C110	3700.00	508.23	508.84	S 14°48'31" E	07°53'08"
C111	3700.00	162.85	162.63	S 20°00'39" E	02°11'07"
C112	3717.50	108.81	108.81	S 12°21'51" E	01°40'38"
C113	3717.50	90.65	90.65	S 13°53'39" E	01°23'50"
C114	3717.50	89.85	89.84	S 15°17'06" E	01°23'05"
C115	3717.50	116.36	116.35	S 16°51'59" E	01°46'41"
C116	350.00	95.84	78.74	N 39°14'47" E	14°00'14"
C117	55.00	220.78	99.69	S 18°45'05" E	23°00'00"
C118	35.00	69.84	58.71	N 76°44'58" W	11°40'14"
C119	55.00	18.06	18.97	S 86°19'00" W	18°51'33"
C120	55.00	45.66	44.36	S 50°06'51" W	47°54'14"
C121	55.00	42.39	41.35	S 06°44'20" W	44°09'36"
C122	55.00	48.96	47.36	S 40°50'27" E	50°29'57"
C123	55.00	45.66	44.36	N 89°15'45" E	07°50'59"
C124	55.00	19.03	18.93	N 56°09'35" E	19°49'21"
C125	3717.50	98.79	98.79	S 20°30'32" E	01°31'21"
C153	25.00	38.42	35.46	N 34°57'34" E	00°11'08"
C154	25.00	38.42	34.78	N 55°09'51" E	08°07'17"
C155	547.50	407.20	397.88	S 58°49'44" W	42°36'48"
C156	572.50	382.73	373.90	S 58°54'59" W	42°47'18"
C157	547.50	65.30	65.66	S 78°41'32" E	06°20'33"
C158	547.50	75.00	74.84	S 69°20'09" W	07°50'58"
C159	547.50	75.00	74.84	S 61°28'14" W	07°50'58"
C160	547.50	75.00	74.84	S 53°38'18" W	07°50'58"
C161	547.50	75.00	74.84	S 45°47'41" W	07°50'58"
C162	547.50	41.50	41.50	S 39°41'18" W	04°20'36"
C163	572.50	78.92	78.94	S 75°53'37" E	08°50'03"
C164	572.50	103.44	102.93	S 65°52'47" E	07°50'58"
C165	572.50	103.44	103.28	S 54°10'04" E	11°33'51"
C166	572.50	97.17	97.02	S 42°57'31" E	10°51'48"
C167	100.00	71.05	69.86	N 37°52'11" E	40°42'22"
C168	55.00	250.84	83.39	S 52°28'40" E	37°04'24"
C169	100.00	71.05	69.86	S 77°10'09" E	40°42'22"
C170	100.00	16.26	16.24	N 42°19'46" E	09°18'51"
C171	100.00	34.79	34.11	N 62°31'57" E	31°23'33"
C172	55.00	36.28	35.63	S 59°19'51" E	37°47'43"
C173	55.00	48.45	46.90	S 15°41'45" E	50°28'29"
C174	55.00	46.55	45.77	S 34°17'17" E	48°29'26"
C175	55.00	50.20	48.30	S 84°14'32" E	52°05'11"
C176	55.00	69.85	65.09	N 33°05'55" E	72°33'51"
C177	100.00	3.81	3.81	S 02°10'42" E	02°30'40"
C178	100.00	67.54	66.28	S 90°16'42" W	38°41'42"
C257	677.50	677.50	121.10	S 135°00'00" E	08°32'09"
C258	677.50	69.45	69.43	S 76°11'50" W	05°52'26"
C259	677.50	92.81	92.73	S 69°20'09" W	07°50'58"
C260	677.50	416.72	410.18	S 52°47'59" W	35°42'29"
C261	677.50	30.81	30.81	S 90°00'00" E	07°50'58"
C262	677.50	92.81	92.73	S 53°38'19" W	07°50'58"
C263	677.50	92.81	92.73	S 45°47'24" W	07°50'58"
C264	677.50	92.81	92.73	S 37°56'29" W	07°50'58"
C265	677.50	62.04	61.05	N 52°56'52" E	35°32'54"
C266	30.00	56.32	56.58	N 54°51'17" E	31°18'04"
C267	30.00	57.72	57.72	N 35°48'50" E	03°18'50"
C268	195.00	129.84	133.25	S 50°45'20" E	24°29'11"
C269	195.00	25.15	25.13	S 67°03'39" W	07°43'20"
C270	195.00	77.94	77.42	S 51°59'59" W	22°33'59"
C271	195.00	171.78	166.28	S 15°17'10" E	50°28'29"
C272	195.00	169.03	161.95	S 34°77'22" E	48°49'26"
C273	195.00	172.27	171.23	S 84°34'32" E	52°05'11"
C274	195.00	147.25	143.78	N 47°44'51" E	43°18'07"
C275	195.00	61.21	60.85	N 17°07'48" E	17°39'05"
C276	100.00	57.54	58.75	S 24°36'46" W	32°08'11"
C277	100.00	19.56	19.52	S 13°43'53" W	11°12'15"
C278	100.00	37.98	37.76	S 30°12'54" W	21°45'46"
C279	352.50	72.48	72.33	S 46°59'07" W	11°54'07"
C280	352.50	34.20	34.19	S 43°52'33" W	05°33'32"
C281	352.50	38.26	38.24	S 49°43'53" W	06°33'08"
C282	371.80	58.52	58.47	S 58°47'56" W	09°21'22"
C283	371.80	58.81	58.75	S 67°50'31" W	09°33'48"
C284	371.80	36.74	36.73	S 57°07'27" W	05°39'45"
C285	371.80	74.80	74.87	S 63°42'47" W	11°14'36"
C286	371.80	42.82	42.82	S 71°45'20" W	09°33'49"
C287	3857.50	171.95	171.93	S 16°42'10" E	02°33'14"
C288	3857.50	78.56	78.56	S 14°00'33" E	01°10'01"
C289	3857.50	93.38	93.38	S 15°17'10" E	01°23'18"
C290	100.00	38.42	38.42	S 38°03'00" W	31°56'24"
C291	200.00	223.65	212.48	S 00°08'41" E	64°04'14"
C292	200.00	46.64	46.63	S 35°29'58" W	13°01'40"
C293	200.00	145.13	150.36	S 06°44'00" W	44°09'36"
C294	200.00	22.86	22.85	S 19°36'57" E	06°32'58"
C297	3660.00	1229.90	1224.12	S 1°38'36" E	19°15'11"
C298	3660.00	1209.74	1204.05	S 1°38'36" E	19°15'11"
C299	3660.00	658.91	657.40	S 07°19'18" E	10°28'19"
C300	3660.00	551.42	550.88	S 16°52'56" E	18°46'34"
C326	3660.00	18.00	18.00	S 18°28'01" E	00°40'05"
C327	3660.00	183.00	183.00	S 18°28'01" E	00°40'00"
C328	3684.50	174.11	174.11	S 18°54'14" E	02°42'32"
C329	3660.00	173.02	173.00	S 19°54'57" E	02°42'31"
C337	195.00	166.20	161.22	S 16°00'47" W	48°50'55"
C338	195.00	166.20	161.22	S 16°00'47" W	48°50'55"
C339	3660.01	653.83	652.97	S 13°12'31" E	10°14'08"
C342	3682.50	657.98	657.10	S 3°12'33" E	10°14'15"
C343	195.00	118.84	112.04	S 26°44'44" E	33°03'30"
C344	195.00	51.39	51.24	S 50°38'37" E	19°09'06"
C345	3730.00	52.09	52.09	S 21°40'13" E	00°48'01"
C346	3730.00	26.86	26.66	S 27°16'30" E	00°24'34"
C347	4730.00	42.11	42.11	S 22°47'37" E	00°58'58"
C348	3730.00	42.81	42.81	S 23°25'29" E	00°39'27"



LINE	DIRECTION	DISTANCE
L1	N 25°58'12" E	41.74
L2	N 40°19'04" W	12.83
L3	S 79°08'03" W	52.27
L4	S 37°31'20" W	193.39
L5	S 71°45'55" W	255.00
L59	N 83°45'05" E	38.63
L60	N 46°14'55" E	38.65
L65	S 37°31'20" W	32.31
L66	S 37°31'20" E	32.31
L82	S 81°23'07" W	17.66
L83	N 72°22'24" E	82.18
L84	N 73°57'38" E	48.58
L85	N 73°57'38" E	15.78
L86	S 53°27'44" E	25.50
L87	S 73°18'07" E	52.24
L88	N 89°22'39" E	34.67
L89	N 67°55'47" E	80.10
L90	N 68°43'44" E	12.60
L91	N 68°43'47" E	17.80
L92	N 68°43'47" E	17.80
L93	N 68°43'50" E	22.50
L105	N 71°31'00" W	22.50
L106	N 71°31'00" W	22.50
L141	S 40°19'04" E	12.83
L142	S 40°19'04" E	12.83
L143	S 75°07'14" W	26.69
L144	S 65°00'52" E	1.90
L145	S 47°05'49" E	17.93
L146	S 15°53'18" E	67.80
L147	S 26°03'29" E	72.18
L148	S 39°53'21" E	29.80
L149	S 59°40'51" E	25.48
L150	S 74°14'06" E	56.31
L151	S 80°19'44" E	44.80
L152	N 83°08'49" E	73.43
L153	N 89°54'29" W	89.11
L154	S 77°39'08" E	67.95
L155	S 52°22'44" E	14.84
L156	N 65°00'52" E	35.77
L157	N 65°00'52" E	4.19
L167	S 47°05'49" E	8.35
L168	S 47°05'49" E	9.39
L172	S 28°03'29" E	39.74
L173	S 26°03'29" E	32.44
L174	S 80°19'44" E	44.80
L175	S 15°16'56" E	43.97
L176	S 06°43'31" E	19.68
L177	S 63°01'39" W	33.76
L178	S 63°01'39" W	38.83
L179	S 15°39'59" E	0.70
L180	S 15°39'59" E	40.79
L181	S 15°39'59" E	11.15
L188	N 74°15'14" E	61.27

THIS INSTRUMENT WAS PREPARED BY
THOMAS M. MURPHY, P.S.M. #5628

HMA HOLE, MONTES & ASSOCIATES
ENGINEERS-PLANNERS-SURVEYORS
NAPLES-FORT MYERS-BONITA SPRINGS
10550 ABERNATHY STREET, BONITA SPRINGS, FLORIDA (941) 992-0795
REFERENCE NO. 9812953 DRAWN BY KJM

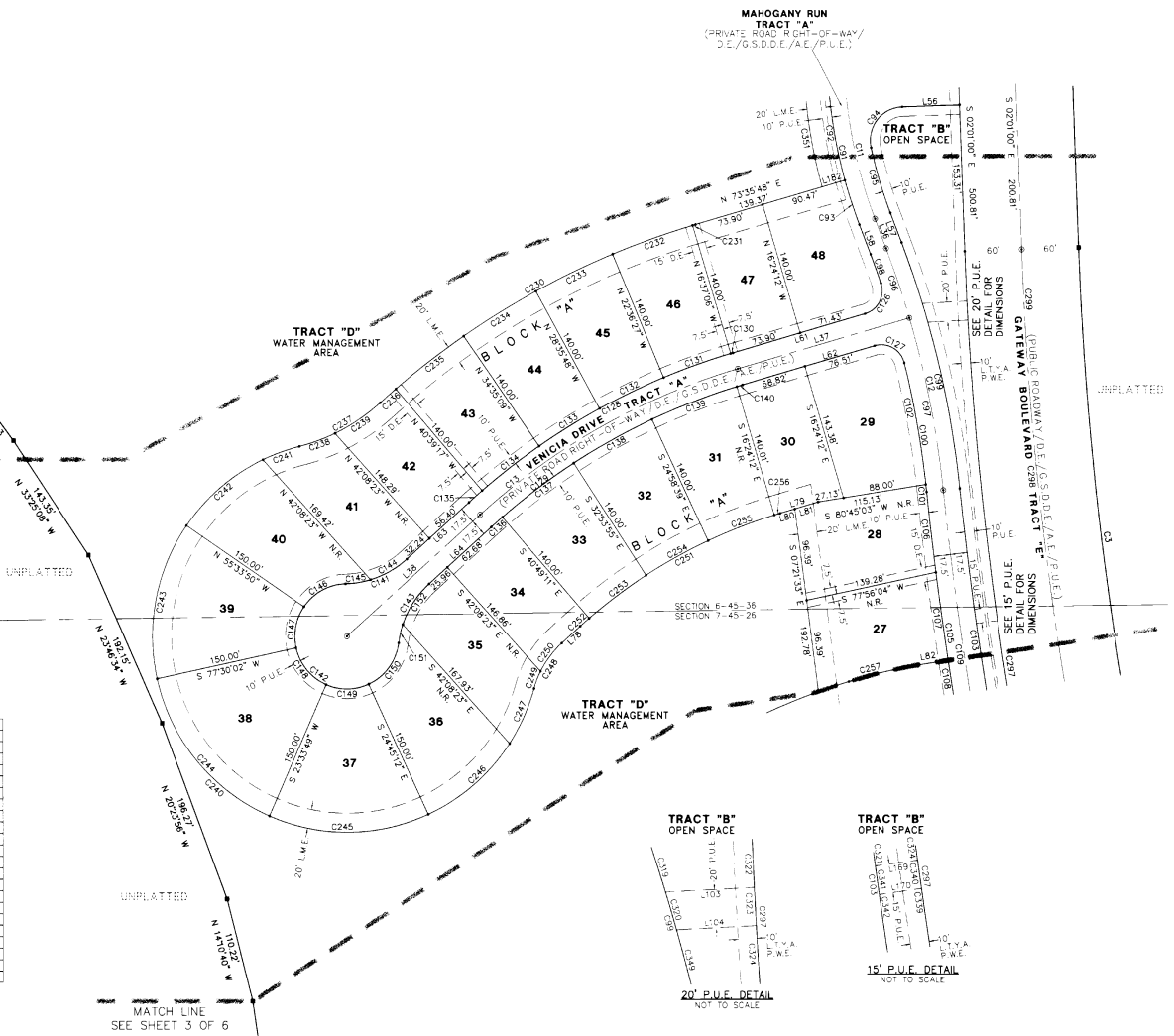
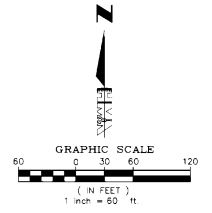
D.O. # 99-01-174.000 9/07/99 1998/29

GATEWAY PHASE 24

A SUBDIVISION LOCATED IN
SECTIONS 6 & 7, TOWNSHIP 45 SOUTH, RANGE 26 EAST
LEE COUNTY, FLORIDA.

CURVE	RAADIUS	LENGTH	CHORD	BEARING	DELTA
C3	3540.00'	1189.57'	1414.96'	S 11°38'36" E	19°45'13"
C11	500.00'	84.04'	163.30'	S 11°24'55" E	8°47'51"
C12	1000.00'	260.78'	286.02'	N 3°20'38" W	14°56'25"
C13	700.00'	314.44'	311.79'	S 6°23'43" W	23°44'48"
C91	517.50'	159.78'	159.02'	S 11°24'55" E	18°42'51"
C92	517.50'	120.73'	120.46'	S 38°42'00" E	13°22'00"
C93	517.50'	49.00'	49.02'	S 18°05'55" E	00°29'51"
C94	35.00'	6.28'	6.375'	S 37°24'35" W	100°18'51"
C95	492.50'	7.44'	7.38'	S 16°34'21" E	08°23'00"
C96	1000.00'	76.98'	76.96'	N 18°36'31" W	04°24'39"
C97	1000.00'	183.77'	183.52'	N 11°08'14" W	0°31'48"
C98	982.50'	32.01'	32.01'	N 19°25'21" E	01°52'00"
C99	1017.50'	285.32'	264.57'	N 13°20'38" W	14°56'25"
C100	982.50'	136.93'	136.82'	N 09°52'09" W	0°75'09"
C101	982.50'	7.81'	7.81'	N 86°05'08" W	100°22'24"
C102	982.50'	128.10'	129.01'	N 10°03'42" W	0°31'44"
C103	3717.50'	989.55'	986.57'	N 1°34'19" W	15°23'47"
C105	3717.50'	241.77'	241.72'	S 08°02'44" S	04°20'34"
C106	3717.50'	84.84'	84.94'	S 02°07'47" E	0°18'33"
C107	3717.50'	92.50'	92.90'	S 07°53'56" E	0°25'55"
C108	3717.50'	103.93'	103.92'	S 09°24'57" E	0°36'06"
C109	3700.00'	322.37'	322.27'	S 08°27'24" S	34°59'31"
C126	25.00'	40.38'	36.13'	N 60°07'53" W	92°32'38"
C27	25.00'	40.38'	36.13'	N 60°07'53" W	92°32'38"
C28	717.50'	322.29'	319.59'	S 60°43'43" W	25°44'10"
C129	682.50'	308.87'	308.00'	S 10°42'00" W	22°44'10"
C130	717.50'	2.69'	2.69'	S 33°29'21" W	09°12'53"
C31	717.50'	75.00'	74.97'	S 70°23'47" W	05°59'21"
C32	717.50'	75.00'	74.97'	S 64°23'53" W	05°54'21"
C133	717.50'	13.00'	13.00'	S 82°34'30" W	03°21'21"
C134	717.50'	76.00'	75.96'	S 62°22'47" W	06°04'08"
C135	717.50'	18.60'	18.60'	S 48°16'10" W	01°29'06"
C136	682.50'	15.72'	15.72'	S 13°21'04" W	02°19'11"
C137	682.50'	94.36'	94.28'	S 53°28'27" W	0°55'16"
C138	682.50'	94.36'	94.28'	S 81°03'43" W	0°55'16"
C139	682.50'	93.29'	95.87'	S 62°02'00" W	08°03'18"
C140	682.50'	61.07'	61.98'	S 13°21'04" W	02°19'11"
C141	100.00'	71.00'	69.56'	N 88°12'48" E	40°42'22"
C142	55.00'	250.94'	63.35'	S 42°28'23" E	261°24'44"
C143	100.00'	71.00'	69.56'	S 47°30'26" E	40°42'22"
C144	100.00'	44.19'	43.81'	N 80°11'05" E	2°09'01"
C145	100.00'	28.86'	26.78'	N 80°52'18" E	15°23'21"
C146	55.00'	51.96'	50.05'	S 61°05'05" E	54°07'50"
C147	55.00'	45.05'	43.86'	S 61°05'05" E	46°58'08"
C148	55.00'	51.78'	49.89'	S 39°28'05" E	53°56'13"
C149	55.00'	45.38'	45.02'	N 89°24'19" E	48°19'00"
C150	55.00'	55.77'	53.47'	N 36°12'02" E	58°05'33"
C151	100.00'	19.76'	19.76'	S 124°24'41" W	11°20'48"
C52	100.00'	51.28'	50.70'	S 31°10'35" W	28°22'04"
C230	857.50'	384.70'	381.48'	S 60°44'40" W	25°42'16"
C231	857.50'	13.27'	13.27'	S 73°23'21" W	00°12'54"
C232	857.50'	89.64'	89.59'	S 10°14'11" W	02°59'21"
C233	857.50'	89.63'	89.59'	S 84°15'13" W	02°59'21"
C234	857.50'	89.63'	89.59'	S 88°24'39" W	02°59'21"
C235	857.50'	93.83'	90.79'	S 32°22'47" W	08°04'08"
C236	857.50'	21.75'	21.75'	S 49°37'08" W	01°27'11"
C237	200.00'	97.73'	96.76'	N 6°53'26" E	27°59'47"
C238	200.00'	40.05'	39.88'	N 70°09'37" E	11°28'24"
C239	200.00'	57.68'	57.48'	N 56°04'14" E	16°31'23"
C240	205.00'	860.26'	354.29'	S 44°19'44" E	240°28'07"
C241	205.00'	41.74'	41.07'	S 70°08'22" W	11°29'55"
C242	205.00'	192.77'	105.90'	S 89°44'47" W	28°51'35"
C243	205.00'	167.93'	163.28'	S 10°58'05" E	46°56'08"
C244	205.00'	192.88'	185.94'	S 35°28'05" E	53°56'13"
C245	205.00'	172.88'	167.80'	N 89°24'19" E	48°19'00"
C246	205.00'	114.83'	113.33'	N 49°17'59" E	33°28'38"
C247	205.00'	63.33'	63.08'	N 24°18'11" E	17°41'58"
C248	100.00'	66.56'	66.81'	S 31°39'25" W	32°24'25"
C249	100.00'	19.29'	19.26'	S 20°28'48" W	11°03'12"
C250	100.00'	42.17'	37.05'	S 19°11'01" W	21°21'11"
C251	542.50'	243.68'	241.64'	S 60°44'40" W	25°44'10"
C252	542.50'	12.50'	12.50'	S 48°11'17" W	01°19'11"
C253	542.50'	74.00'	74.84'	S 33°59'37" W	0°28'16"
C254	542.50'	75.00'	74.94'	S 61°03'43" W	0°55'16"
C255	542.50'	75.00'	74.94'	S 88°24'39" W	0°55'16"
C256	542.50'	6.18'	6.18'	S 73°16'14" W	00°35'11"
C257	6717.50'	103.00'	103.00'	S 74°46'28" W	08°43'05"
C297	3660.00'	1229.90'	1224.12'	S 11°38'36" E	19°45'13"
C298	3660.00'	1209.73'	1204.05'	S 11°38'36" E	19°45'13"
C319	3660.00'	938.11'	937.49'	S 07°28'27" E	14°28'39"
C320	1017.50'	67.65'	67.63'	N 18°54'35" E	03°48'33"
C321	1017.50'	20.56'	20.56'	N 18°25'34" W	01°09'28"
C322	3662.00'	127.48'	127.45'	S 06°51'56" E	01°58'59"
C323	3662.00'	63.22'	62.72'	S 07°28'27" E	00°49'03"
C324	3662.00'	20.00'	20.00'	S 02°59'27" E	00°18'47"
C325	3660.00'	300.82'	300.74'	S 05°30'14" E	04°42'33"
C340	3660.00'	15.00'	15.00'	S 07°28'27" E	00°14'00"
C341	3682.00'	15.00'	15.00'	S 07°28'27" E	00°14'00"
C349	1017.50'	177.11'	176.85'	N 10°51'38" W	08°58'24"
C351	542.50'	127.01'	126.72'	S 08°43'25" E	13°24'49"

LINE	DIRECTION	DISTANCE
L3	N 36°42'41" W	34.16
L36	S 20°48'51" E	33.03
L37	S 0°19'58" W	189.78
L38	S 47°51'37" W	189.73
L56	S 87°59'00" W	60.27
L57	S 20°48'51" E	33.03
L58	S 0°04'51" E	33.03
L59	S 73°55'48" W	145.33
L62	S 73°55'48" W	145.33
L63	S 47°51'37" W	88.64
L64	S 47°51'37" W	88.64
L78	N 47°51'37" E	26.27
L79	N 73°55'48" E	41.89
L80	N 73°55'48" E	16.43
L81	N 73°55'48" E	25.46
L82	S 81°23'07" W	37.66
L103	N 87°00'33" E	46.89
L104	N 87°00'33" E	45.07
L109	N 82°04'02" E	22.50
L170	N 82°04'02" E	22.50
L182	N 73°55'48" E	25.00



D.O. # 99-01-174.00D 9/29/99 (0.98)24

THIS INSTRUMENT WAS PREPARED BY
THOMAS M. MURPHY, P.S.M. #5628

HMA HOLE, MONTES & ASSOCIATES
ENGINEERS-PLANNERS-SURVEYORS
NAPLES-FORT MYERS-BONITA SPRINGS
10550 ABERNATHY STREET, BONITA SPRINGS, FLORIDA (941) 992-0795
REFERENCE NO. 9812954 DRAWN BY KJM

GATEWAY PHASE 24

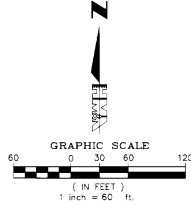
A SUBDIVISION LOCATED IN
SECTIONS 6 & 7, TOWNSHIP 45 SOUTH, RANGE 26 EAST
LEE COUNTY, FLORIDA.

CURVE TABLE					
CURVE	RADIUS	LENGTH	CHORD	BEARING	DELTA
C2	2160.00'	486.66'	485.63'	S 05°28'16" E	1°54'13"
C4	800.00'	151.83'	151.60'	S 49°50'41" W	1°52'22"
C5	350.00'	813.25'	811.92'	N 85°52'25" W	142°21'20"
C6	374.00'	136.27'	132.24'	N 84°55'33" E	142°21'20"
C16	55.00'	250.94'	83.30'	S 45°35'32" E	261°24'44"
C17	100.00'	71.05'	65.56'	N 64°45'39" E	4042'22"
C18	100.00'	71.05'	65.56'	S 24°33'37" W	4042'22"
C19	100.00'	69.22'	67.84'	N 54°41'11" E	39°39'26"
C20	100.00'	1.83'	1.83'	N 84°35'22" E	0°10'25"
C21	55.00'	64.94'	61.25'	S 5°17'17" W	67°39'04"
C22	55.00'	51.30'	48.46'	S 09°51'31" E	53°29'10"
C23	55.00'	52.72'	50.19'	S 63°07'38" E	64°17'43"
C24	55.00'	51.61'	49.73'	N 62°50'43" E	53°48'42"
C25	55.00'	30.97'	30.56'	N 84°49'37" E	12°15'43"
C26	817.50'	159.15'	154.92'	S 49°50'41" W	10°52'22"
C27	782.50'	148.51'	148.29'	S 49°50'41" W	10°52'22"
C28	817.50'	1.69'	1.89'	S 44°28'26" W	02°07'56"
C29	817.50'	90.83'	90.79'	S 47°12'33" W	06°21'59"
C30	817.50'	62.43'	62.42'	S 53°54'39" W	04°22'33"
C31	782.50'	99.68'	99.61'	S 48°03'25" W	07°17'55"
C32	782.50'	48.83'	48.82'	S 33°29'39" W	03°34'39"
C33	317.50'	149.30'	144.78'	N 65°02'25" W	11°20'29"
C34	282.50'	577.48'	482.06'	N 55°05'24" W	117°07'20"
C35	317.50'	32.70'	32.65'	S 58°13'37" W	05°54'05"
C36	317.50'	71.88'	71.72'	S 67°40'07" W	12°58'41"
C37	317.50'	73.08'	73.12'	S 80°45'58" W	13°13'29"
C38	317.50'	78.16'	77.96'	N 85°14'09" W	14°06'16"
C39	317.50'	80.53'	80.31'	N 71°15'04" W	14°31'56"
C40	317.50'	88.94'	88.53'	N 55°58'08" W	15°01'56"
C41	317.50'	223.63'	219.04'	N 27°46'27" W	40°21'25"
C42	282.50'	79.86'	79.59'	S 63°22'48" W	16°11'46"
C43	282.50'	136.88'	137.48'	S 48°53'41" W	28°01'01"
C44	282.50'	142.93'	141.42'	N 65°51'37" E	28°59'24"
C45	282.50'	143.11'	141.59'	N 36°51'09" W	29°01'31"
C46	282.50'	72.70'	72.50'	N 14°58'54" W	14°44'38"
C47	307.50'	130.81'	129.84'	N 04°36'33" E	14°22'38"
C48	342.50'	145.72'	144.62'	N 04°55'13" E	14°22'38"
C50	307.50'	52.77'	52.11'	N 02°44'08" W	09°43'14"
C179	198.40'	749.86'	377.09'	S 35°22'26" E	71°16'10"
C180	198.40'	129.32'	129.31'	S 35°02'39" W	35°11'56"
C181	198.40'	185.06'	78.42'	S 09°53'36" E	53°26'35"
C182	198.40'	188.07'	81.05'	S 63°07'44" E	64°17'40"
C183	198.40'	96.16'	79.40'	N 52°20'38" E	33°34'36"
C184	198.40'	67.42'	67.07'	N 20°15'42" E	19°28'18"
C185	200.00'	125.79'	123.72'	S 34°30'35" W	35°02'05"
C186	200.00'	27.26'	27.23'	S 20°23'47" W	07°48'29"
C187	200.00'	89.18'	88.44'	S 37°04'28" W	25°23'23"
C188	200.00'	9.35'	9.35'	S 51°11'16" W	02°40'43"
C189	652.50'	31.37'	31.37'	S 53°54'16" W	02°45'17"
C190	150.00'	288.65'	246.13'	N 69°35'25" W	110°15'20"
C191	150.00'	68.89'	68.43'	S 68°04'31" W	11°01'50"
C192	150.00'	68.86'	68.06'	N 86°10'05" W	28°13'35"
C193	150.00'	65.88'	65.36'	N 60°9'18" W	24°02'59"
C194	150.00'	63.63'	63.11'	N 37°43'27" W	24°18'11"
C195	150.00'	23.49'	23.47'	N 85°46'55" W	08°58'20"
C196	447.50'	4.22'	4.22'	S 87°42'48" W	03°32'23"
C295	2040.00'	459.63'	458.03'	N 38°28'16" W	72°24'33"
C296	2100.00'	473.14'	473.14'	N 38°28'16" W	72°24'33"
C301	2040.00'	70.45'	70.45'	N 13°56'11" W	01°58'44"
C302	317.50'	203.62'	200.15'	N 25°58'07" W	36°44'42"

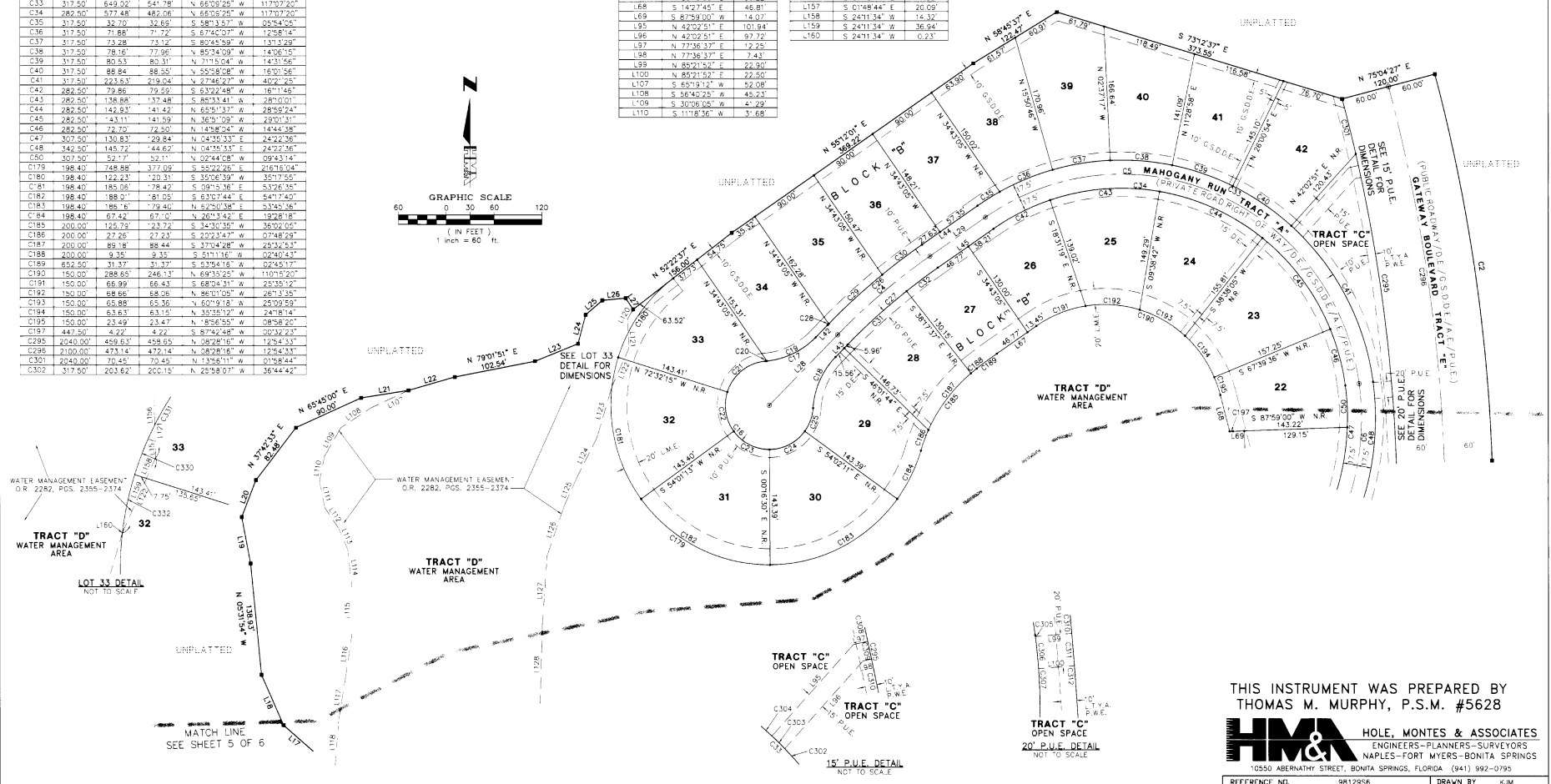
CURVE TABLE					
CURVE	RADIUS	LENGTH	CHORD	BEARING	DELTA
C302	317.50'	203.62'	200.15'	N 25°58'07" W	36°44'42"
C303	317.50'	15.03'	15.03'	N 49°51'44" W	02°42'33"
C304	317.50'	5.00'	5.00'	N 47°32'05" W	00°54'09"
C305	342.50'	0.85'	0.85'	N 07°13'28" W	00°08'14"
C306	342.50'	20.01'	20.00'	N 00°48'47" W	03°20'44"
C307	342.50'	128.86'	124.17'	N 02°02'14" E	206°31'31"
C308	2040.00'	14.85'	14.84'	N 7°44'19" W	00°25'01"
C309	2040.00'	16.00'	16.00'	N 12°39'07" W	00°25'17"
C310	2040.00'	256.08'	259.31'	N 08°33'45" W	271°13'32"
C311	2040.00'	20.00'	20.00'	N 04°38'08" W	00°33'42"
C312	2040.00'	83.25'	83.24'	N 03°11'08" W	02°20'17"
C313	198.40'	33.35'	33.31'	S 22°16'35" W	09°37'47"
C314	198.40'	88.88'	88.44'	S 19°25'22" W	26°40'08"
C315	198.40'	36.50'	36.54'	S 12°08'02" W	1°03'19"
C333	198.40'	148.16'	144.74'	S 14°35'16" E	42°47'16"

LINE TABLE		
LINE	DIRECTION	DISTANCE
L17	N 48°53'31" W	48.83'
L18	N 23°56'31" W	88.52'
L19	N 10°58'12" W	88.68'
L20	N 21°16'58" E	49.32'
L21	N 81°03'11" E	62.26'
L22	N 73°54'53" E	60.45'
L23	N 68°00'52" E	88.18'
L24	N 14°53'37" E	37.27'
L25	N 48°23'59" E	27.49'
L26	N 84°28'58" E	29.46'
L27	S 33°38'08" E	16.37'
L28	N 44°24'28" E	21.52'
L29	N 05°16'55" E	84.98'
L42	N 44°24'28" E	21.52'
L43	N 44°24'28" E	21.52'
L44	N 35°16'55" E	84.98'
L45	N 55°16'55" E	84.98'
L67	N 55°16'55" E	60.22'
L68	N 14°27'45" E	48.81'
L69	S 47°03'00" W	14.07'
L95	N 42°02'51" E	101.84'
L96	N 42°02'51" E	67.72'
L97	N 77°36'37" E	12.25'
L98	N 77°36'37" E	7.43'
L99	N 85°21'52" E	22.30'
L100	N 85°21'52" E	22.50'
L107	S 65°19'12" W	52.08'
L108	S 56°40'25" W	45.23'
L109	S 30°06'26" W	41.29'
L110	S 11°18'36" W	31.68'

LINE TABLE		
LINE	DIRECTION	DISTANCE
L111	S 11°18'36" W	33.30'
L112	S 34°14'57" E	29.44'
L113	S 23°47'54" E	28.98'
L114	S 06°27'52" E	47.46'
L115	S 00°00'00" W	68.95'
L116	S 08°31'51" W	53.98'
L117	S 08°31'51" W	55.00'
L118	S 24°28'02" W	37.12'
L119	S 30°02'00" W	13.35'
L121	S 01°48'44" E	37.44'
L122	S 24°11'34" W	31.49'
L123	S 16°32'13" W	66.64'
L124	S 26°54'50" W	54.51'
L125	S 24°27'11" W	39.98'
L126	S 18°59'57" W	65.45'
L127	S 23°27'11" W	86.99'
L128	S 01°43'35" W	96.13'
L129	S 01°48'44" E	17.35'
L130	S 01°48'44" E	20.09'
L131	S 24°11'34" W	14.37'
L132	S 24°11'34" W	36.54'
L133	S 24°11'34" W	0.23'



D.O. # 99-01-174.00D 9/07/99 (1998) (2)



THIS INSTRUMENT WAS PREPARED BY
THOMAS M. MURPHY, P.S.M. #5628

HMA HOLE, MONTES & ASSOCIATES
ENGINEERS-PLANNERS-SURVEYORS
NAPLES-FORT MYERS-BONITA SPRINGS
10550 ABERNATHY STREET, BONITA SPRINGS, FLORIDA (941) 992-0795
REFERENCE NO. 9812956 DRAWN BY KJM