

# GATEWAY PHASE 22

PLAT BOOK 58, PAGE 76

SHEET 1 OF 5

## DESCRIPTION:

A PARCEL OF LAND SITUATED IN THE STATE OF FLORIDA, COUNTY OF LEE, BEING A PART OF SECTIONS 1 AND 12, TOWNSHIP 45 SOUTH, RANGE 25 EAST, AND FURTHER DESCRIBED AS FOLLOWS:

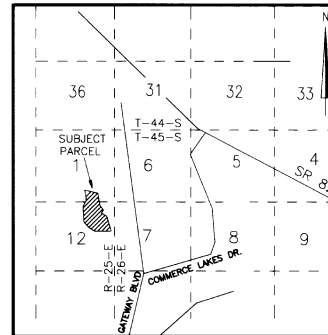
BEGINNING AT THE NORTHERN MOST CORNER OF LOT 11, BLOCK C, GATEWAY PHASE 18, A SUBDIVISION RECORDED IN PLAT BOOK 55 AT PAGES 61 THROUGH 72, INCLUSIVE, PUBLIC RECORDS OF SAID LEE COUNTY; THENCE N45°20'54"W FOR 205.88 FEET TO THE BEGINNING OF A CURVE TO THE RIGHT HAVING A RADIUS OF 370.00 FEET; THENCE NORTHERLY ALONG SAID CURVE THROUGH A CENTRAL ANGLE OF 59°09'37" FOR 382.04 FEET TO A POINT OF TANGENCY; THENCE N13°48'43"E FOR 148.46 FEET TO THE BEGINNING OF A CURVE TO THE LEFT HAVING A RADIUS OF 25.00 FEET; THENCE NORTHWESTERLY ALONG SAID CURVE THROUGH A CENTRAL ANGLE OF 84°34'53" FOR 36.91 FEET TO A POINT OF TANGENCY; THENCE N70°46'10"W FOR 415.95 FEET TO THE BEGINNING OF A CURVE TO THE LEFT HAVING A RADIUS OF 1382.50 FEET; THENCE NORTHWESTERLY ALONG SAID CURVE THROUGH A CENTRAL ANGLE OF 13°47'30" FOR 332.78 FEET; THENCE S06°18'09"E, NON-TANGENTIALLY, FOR 354.57 FEET; THENCE S29°50'00"W FOR 254.42 FEET; THENCE S04°27'00"E FOR 1042.01 FEET; THENCE S28°00'00"E FOR 200.00 FEET; THENCE S44°32'37"E FOR 481.68 FEET; THENCE S71°02'12"E FOR 1117.59 FEET TO THE SOUTHWESTERLY CORNER OF TRACT K OF SAID GATEWAY PHASE 18; THENCE N16°04'09"W ALONG THE WESTERLY LINE OF SAID SUBDIVISION FOR 370.53 FEET; THENCE N04°38'04"W ALONG SAID SUBDIVISION FOR 817.70 FEET; THENCE N71°14'00"W ALONG SAID SUBDIVISION FOR 299.80 FEET; THENCE N45°12'27"W ALONG SAID SUBDIVISION FOR 315.01 FEET; THENCE N44°39'06"E ALONG SAID SUBDIVISION FOR 193.42 FEET TO THE POINT OF BEGINNING.

CONTAINING 51.33 ACRES, MORE OR LESS.

BEARINGS ARE BASED ON THE RECORD PLAT OF GATEWAY PHASE 18 WITH THE CENTERLINE OF CHAMPIONSHIP DRIVE AS BEARING N45°20'54"W AT THE WESTERLY SUBDIVISION BOUNDARY.

A SUBDIVISION LOCATED IN  
SECTIONS 1 AND 12, TOWNSHIP 45 SOUTH, RANGE 25 EAST,  
LEE COUNTY, FLORIDA.

LOCATION SKETCH  
NOT TO SCALE



## NOTES:

- DIMENSIONS SHOWN ARE IN FEET AND DECIMAL PARTS THEREOF.
- ALL CURVES ARE CIRCULAR.
- FOR UTILITY EASEMENT PROVISIONS REFER TO CHAPTER 177.091(29), F.S.
- ALL DRAINAGE EASEMENTS ARE CENTERED ON LOT LINES UNLESS NOTED OTHERWISE.
- G.S.D.E. AND G.S.D.U.E. INDICATES GATEWAY SERVICES DISTRICT DRAINAGE EASEMENTS AND UTILITY EASEMENTS RESPECTIVELY.
- ALL PRIVATE ROADS ARE ALSO PUBLIC UTILITY EASEMENTS AND DRAINAGE EASEMENTS.

## EASEMENT DESCRIPTION:

ALL LOTS AND TRACTS ARE SUBJECT TO A 10.0 FOOT UTILITY EASEMENT FOR UNDERGROUND UTILITIES ALONG AND ADJACENT TO ALL ROADWAYS. SEE SHEETS 3 THROUGH 5 FOR ADDITIONAL EASEMENTS.

## APPROVAL:

THIS PLAT IS ACCEPTED AND APPROVED BY THE BOARD OF COUNTY COMMISSIONERS, LEE COUNTY, FLORIDA THIS 8<sup>TH</sup> DAY OF SEPTEMBER, A.D. 1996.

*Andrew W. Coy*  
Vice Chairman of the Board  
PRINT NAME: Andrew W. Coy

*Charlie Green*  
CLERK OF THE COURT  
PRINT NAME: Charlie Green

*Dawn E. Perry-Lambert*  
COUNTY ATTORNEY  
PRINT NAME: Dawn E. Perry-Lambert

*Walter J. McCarthy*  
DIRECTOR, DIVISION OF ZONING AND DEVELOPMENT SERVICES  
PRINT NAME: Walter J. McCarthy

*Mary Gibbs*  
DIRECTOR, DEPARTMENT OF COMMUNITY DEVELOPMENT  
PRINT NAME: MARY GIBBS



## CLERK'S CERTIFICATION:

I HEREBY CERTIFY THAT THE ATTACHED PLAT OF GATEWAY PHASE 22, A SUBDIVISION LOCATED IN SECTIONS 1 AND 12, TOWNSHIP 45 SOUTH, RANGE 25 EAST, LEE COUNTY, FLORIDA, HAS BEEN EXAMINED BY ME AND FROM MY EXAMINATION I FIND THAT SAID PLAT COMPLIES WITH THE REQUIREMENTS OF CHAPTER 177, LAWS OF FLORIDA.

4023583

I FURTHER CERTIFY THAT THIS PLAT WAS FILED FOR RECORD AT 2:36 A.M. THIS 3<sup>RD</sup> DAY OF SEPTEMBER, A.D. 1996, AND DULY RECORDED IN PLAT BOOK 58 AT PAGES 76 THROUGH 80 OF THE PUBLIC RECORDS OF LEE COUNTY, FLORIDA.

*Charlie Green*  
NAME: CHARLIE GREEN  
CLERK OF THE CIRCUIT COURT IN AND FOR  
LEE COUNTY, FLORIDA



## SURVEYOR'S CERTIFICATION:

I HEREBY CERTIFY THAT THE ATTACHED PLAT OF GATEWAY PHASE 22, A SUBDIVISION LOCATED IN SECTIONS 1 AND 12, TOWNSHIP 45 SOUTH, RANGE 25 EAST, IS A TRUE AND CORRECT REPRESENTATION OF THE HEREIN DESCRIBED LAND, ACCORDING TO A RECENT SURVEY MADE AND PLATTED UNDER MY DIRECTION AND SUPERVISION, AND THAT THE SURVEY DATA COMPLIES WITH ALL THE REQUIREMENTS OF CHAPTER 177, FLORIDA STATUTES. I FURTHER CERTIFY THAT THE PERMANENT REFERENCE MONUMENTS (PRMS) HAVE BEEN PLACED AT THE LOCATIONS SHOWN HEREON.

BEAN, WHITAKER, LUTZ & BARNES, INC.

*Scott C. Whitaker*  
SCOTT C. WHITAKER, P.L.S. - FLORIDA CERTIFICATE NO. 4324  
DATE: 8/2/96



## GATEWAY SERVICES DISTRICT

THE DISTRICT HEREBY ACKNOWLEDGES ACCEPTANCE OF EASEMENTS DEDICATED ON THIS PLAT AND DRAINAGE OF ALL LANDS CONTAINED WITHIN THIS PLAT.

WITNESSES AS TO BOTH:

*David W. Caldwell*  
PRINTED NAME: DAVID W. CALDWELL

*Douglas G. Brown*  
DOUGLAS G. BROWN, CHAIRMAN  
GATEWAY SERVICES DISTRICT

*Andrew D. Tilton*  
PRINTED NAME: ANDREW D. TILTON

*Steven Whitley*  
STEVEN WHITLEY, SECRETARY  
GATEWAY SERVICES DISTRICT

## ACKNOWLEDGEMENT:

STATE OF FLORIDA )  
COUNTY OF LEE )

THE FOREGOING ACCEPTANCE WAS ACKNOWLEDGED BEFORE ME THIS 12<sup>TH</sup> DAY OF August, 1996, BY DOUGLAS G. BROWN, CHAIRMAN AND STEVEN WHITLEY, SECRETARY OF THE GATEWAY SERVICES DISTRICT ON BEHALF OF SAID DISTRICT. THEY ☒ ARE PERSONALLY KNOWN TO ME OR ☐ HAVE PRODUCED \_\_\_\_\_ AS IDENTIFICATION.

*Mary Katherine McKee*  
NOTARY PUBLIC - STATE OF Florida

PRINTED NAME: Mary Katherine McKee

(SEAL)

CC: 445389 MY COMMISSION EXPIRES  
COMMISSION # \_\_\_\_\_



## GATEWAY PHASE 22

A SUBDIVISION LOCATED IN  
SECTIONS 1 AND 12, TOWNSHIP 45 SOUTH, RANGE 25 EAST,  
LEE COUNTY, FLORIDA.

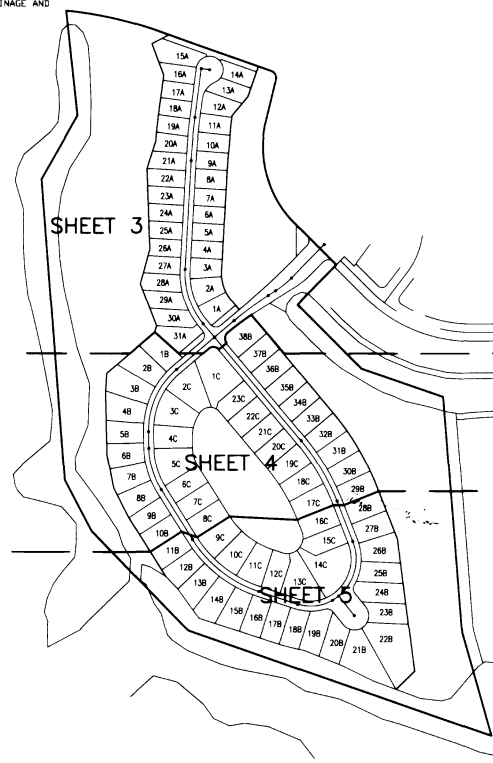
LOT AREA TABLE

BLOCK 'A' LOT AREA NO. SF	BLOCK 'B' LOT AREA NO. SF	BLOCK 'C' LOT AREA NO. SF
1 7,517	1 9,454	1 18,688
2 8,520	2 11,276	2 14,356
3 7,381	3 9,499	3 13,226
4 6,855	4 8,587	4 10,246
5 6,800	5 8,563	5 13,483
6 6,600	6 9,832	6 9,452
7 6,600	7 10,190	7 9,450
8 7,402	8 9,928	8 9,450
9 6,702	9 9,100	9 10,847
10 7,058	10 9,100	10 10,855
11 7,095	11 9,347	11 10,636
12 8,340	12 10,059	12 9,403
13 7,856	13 10,734	13 15,036
14 6,987	14 12,055	14 15,299
15 11,244	15 10,678	15 10,212
16 7,065	16 9,745	16 9,646
17 6,607	17 9,450	17 10,127
18 6,615	18 9,436	18 10,268
19 6,610	19 11,536	19 10,232
20 7,101	20 10,590	20 9,450
21 7,695	21 18,601	21 10,125
22 7,952	22 25,389	22 10,125
23 7,627	23 9,751	23 9,282
24 7,301	24 11,817	
25 6,974	25 10,349	
26 6,774	26 11,487	
27 7,337	27 9,759	
28 8,195	28 9,230	
29 8,132	29 8,458	
30 8,403	30 9,632	
31 9,512	31 9,630	
	32 9,606	
	33 9,100	
	34 9,750	
	35 9,750	
	36 9,100	
	37 9,100	
	38 11,222	

KEY MAP  
NOT TO SCALE

TRACT IDENTIFICATION/USE AND AREA TABLE

TRACT	AREA	USE
A	165,219	PRIVATE ROAD RIGHT-OF-WAY, DRAINAGE AND PUBLIC UTILITY EASEMENT
B	96,136	WATER MANAGEMENT (TO GSD)
C	86,200	WATER MANAGEMENT (TO GSD)
D	126,596	WATER MANAGEMENT (TO GSD)
E	34,896	WATER MANAGEMENT (TO GSD)
F	9,273	LANDSCAPE BUFFER (TO GGCA)
G	2,930	GOLF COURSE
H	127,626	GOLF COURSE
I	292,887	GOLF COURSE
J	386,611	GOLF COURSE
K	6,923	LANDSCAPE BUFFER (TO GGCA)
L	2,167	LANDSCAPE BUFFER (TO GGCA)
M	1,159	LANDSCAPE BUFFER (TO GGCA)
TOTAL TRACTS - 30.72 AC		
GRAND TOTAL - 51.33 AC		



## DEDICATION

KNOW ALL MEN BY THESE PRESENTS THAT BAY COLONY-GATEWAY, INC., A DELAWARE CORPORATION, QUALIFIED TO DO BUSINESS IN THE STATE OF FLORIDA, THE OWNER OF THE LANDS DESCRIBED HEREIN HAS CAUSED THIS PLAT OF GATEWAY PHASE 22, A SUBDIVISION LOCATED IN SECTIONS 1 AND 12, TOWNSHIP 45 SOUTH, RANGE 25 EAST, LEE COUNTY, FLORIDA, TO BE MADE, AND DOES HEREBY MAKE THE FOLLOWING DEDICATIONS:

TO THE GATEWAY GREENS COMMUNITY ASSOCIATION, INC., A FLORIDA NOT-FOR-PROFIT CORPORATION, FOR THE BENEFIT OF ITS PRESENT AND FUTURE MEMBERS, ITS SUCCESSORS AND ITS ASSIGNS, AND THEIR TENANTS, INVITEES, LICENSEES, MORTGAGEES AND EMPLOYEES, ALL OF THE PRIVATE ROAD RIGHTS-OF-WAY OF CALLAWAY GREENS DRIVE AND CALLAWAY GREENS COURT (HEREIN REFERRED TO AS TRACT 'A'), TOGETHER WITH LANDSCAPING AND SIGNAGE IMPROVEMENTS NOW OR HEREINAFTER CONTAINED THEREIN, FOR THE PURPOSES OF INGRESS AND EGRESS, MAINTENANCE, REPAIR AND REPLACEMENT OF ROAD, LANDSCAPING AND SIGNAGE, RESERVING UNTO BAY COLONY-GATEWAY, INC., ITS SUCCESSORS AND ASSIGNS, EMPLOYEES AND INVITEES, A PERPETUAL RIGHT FOR INGRESS AND EGRESS ON AND OVER SAID TRACT 'A'.

TO THE GATEWAY SERVICES DISTRICT, ITS SUCCESSORS AND ASSIGNS, ALL OF TRACTS 'B', 'C', 'D' AND 'E' (WATER MANAGEMENT TRACTS) FOR THE PURPOSES OF WATER MANAGEMENT, DRAINAGE AND/OR LAKE MAINTENANCE.

TO THE GATEWAY SERVICES DISTRICT, ITS SUCCESSORS AND ASSIGNS, ALL EASEMENTS HEREIN LABELED 'LAKE MAINTENANCE EASEMENT' (INCLUDING PART OF LOTS 1 THROUGH 23, BLOCK 'C', LOTS 11 THROUGH 22, INCLUSIVE, BLOCK 'B' AND PART OF TRACTS 'F', 'J' AND 'I') AS SHOWN ON THIS PLAT AS A LAKE MAINTENANCE EASEMENT, FOR PURPOSES OF WATER MANAGEMENT, DRAINAGE AND/OR LAKE MAINTENANCE.

TO THE GATEWAY GREENS COMMUNITY ASSOCIATION, INC., ITS SUCCESSORS AND ASSIGNS, ALL OF TRACTS 'F', 'L' AND 'M' (LANDSCAPE BUFFER TRACTS) FOR THE PURPOSES OF LANDSCAPING, SIGNAGE AND MAINTENANCE THERETO.

TO THE GATEWAY SERVICES DISTRICT, ITS SUCCESSORS AND ASSIGNS, ALL EASEMENTS HEREIN LABELED 'LAKE ACCESS EASEMENT' (INCLUDING PART OF LOTS 13 AND 14, BLOCK 'C', PART OF TRACTS 'F' AND 'J') AS SHOWN ON THIS PLAT AS A LAKE ACCESS EASEMENT (L.A.E.), FOR PURPOSES OF INGRESS/EGRESS FOR PERSONNEL AND EQUIPMENT TO PROVIDE LAKE MAINTENANCE.

TO THE GATEWAY SERVICES DISTRICT, ITS SUCCESSORS AND ASSIGNS, ALL EASEMENTS HEREIN LABELED 'GATEWAY SERVICES DISTRICT DRAINAGE EASEMENT' (INCLUDING ALL OF TRACT 'A', PART OF TRACTS 'F', 'H', 'I', 'J', 'L' AND BLOCK 'A', PART OF LOTS 1 THROUGH 31, INCLUSIVE; BLOCK 'B', PART OF LOTS 1 THROUGH 13 AND LOTS 19 THROUGH 38, INCLUSIVE; BLOCK 'C', PART OF LOTS 2, 3, 13, 14, 15, 16, 21, 22 AS SHOWN ON THIS PLAT, AS A GATEWAY SERVICES DISTRICT DRAINAGE EASEMENT (G.S.D.E.), FOR PURPOSES OF INSTALLATION, REPAIR AND MAINTENANCE OF ITS DRAINAGE FACILITIES WITHIN SAID DRAINAGE EASEMENTS.

TO THE GATEWAY SERVICES DISTRICT, ITS SUCCESSORS AND ASSIGNS, AND TO THE RESPECTIVE GOVERNMENTAL AGENCIES AND PUBLIC UTILITIES HAVING THE AUTHORITY TO PROVIDE FOR SUCH SERVICES, ALL EASEMENTS HEREIN LABELED OR NOTED 'UTILITY EASEMENT' (INCLUDING ALL OF TRACT 'A', PART OF TRACTS 'F', 'G', 'H', 'I', 'J', 'K', 'L' AND 'M' AND PART OF ALL LOTS IN BLOCKS 'A', 'B' AND 'C', INCLUSIVE) AS SHOWN ON THIS PLAT AS A UTILITY EASEMENT, FOR PURPOSES OF INSTALLATION, REPAIR AND MAINTENANCE OF THEIR RESPECTIVE FACILITIES, INCLUDING WATER, SEWER, STREET LIGHTS, IRRIGATION, ELECTRIC, CABLE TELEVISION AND TELEPHONE.

TO THE GATEWAY SERVICES DISTRICT, ITS SUCCESSORS AND ASSIGNS, AND TO THE RESPECTIVE GOVERNMENTAL AGENCIES AND PUBLIC UTILITIES HAVING THE AUTHORITY TO PROVIDE FOR SUCH SERVICES, A NON-EXCLUSIVE ACCESS EASEMENT ON, OVER AND ACROSS TRACT 'A' FOR THE SOLE PURPOSE OF GAINING ACCESS TO THEIR RESPECTIVE FACILITIES WITHIN THE DRAINAGE, LAKE MAINTENANCE AND UTILITY EASEMENTS SHOWN HEREON.

BAY COLONY-GATEWAY, INC., A DELAWARE CORPORATION, QUALIFIED TO DO BUSINESS IN THE STATE OF FLORIDA, HAS CAUSED THESE PRESENTS TO BE MADE AND SIGNED AND ATTESTED TO IN ITS NAME BY ITS OFFICERS THIS \_\_\_\_\_ DAY OF \_\_\_\_\_, 1996 A.D.

BAY COLONY-GATEWAY, INC.

*Jerry H. Schmoeyer*  
JERRY H. SCHMOYER  
SENIOR VICE PRESIDENT

*Vivian N. Hastings*  
VIVIAN N. HASTINGS  
SECRETARY

*Carm A. Melly*  
NAME: CARM A. MELLY  
WITNESS AS TO BOTH

*Vivian N. Hastings*  
NAME: VIVIAN N. HASTINGS  
WITNESS AS TO BOTH

## ACKNOWLEDGEMENT

STATE OF Florida  
COUNTY OF Collier

THE FOREGOING DEDICATION WAS ACKNOWLEDGED BEFORE ME THIS 19th DAY OF August, 1996 A.D. BY JERRY H. SCHMOYER, SENIOR VICE PRESIDENT, AND VIVIAN N. HASTINGS, SECRETARY OF BAY COLONY-GATEWAY, INC., A DELAWARE CORPORATION, QUALIFIED TO DO BUSINESS IN THE STATE OF FLORIDA, ON BEHALF OF THE CORPORATION. THEY ARE PERSONALLY KNOWN TO ME OR HAVE PRODUCED \_\_\_\_\_ AS IDENTIFICATION TO BE THE PERSONS DESCRIBED IN AND WHO EXECUTED THE FOREGOING DEDICATION AND ACKNOWLEDGED THE EXECUTION THEREOF TO BE THEIR FREE ACT AND DEED AS SUCH OFFICERS FOR THE USES AND PURPOSES THEREIN MENTIONED AND THAT SAID DEDICATION IS THE ACT AND DEED OF SAID CORPORATION.

NOTARY PUBLIC - STATE OF FLORIDA

*Carm A. Melly*  
NAME (PRINTED) CARM A. MELLY



COMMISSION NO. \_\_\_\_\_  
STATE OF FLORIDA  
COUNTY OF LEE

COMMISSION EXPIRES 12-31-96

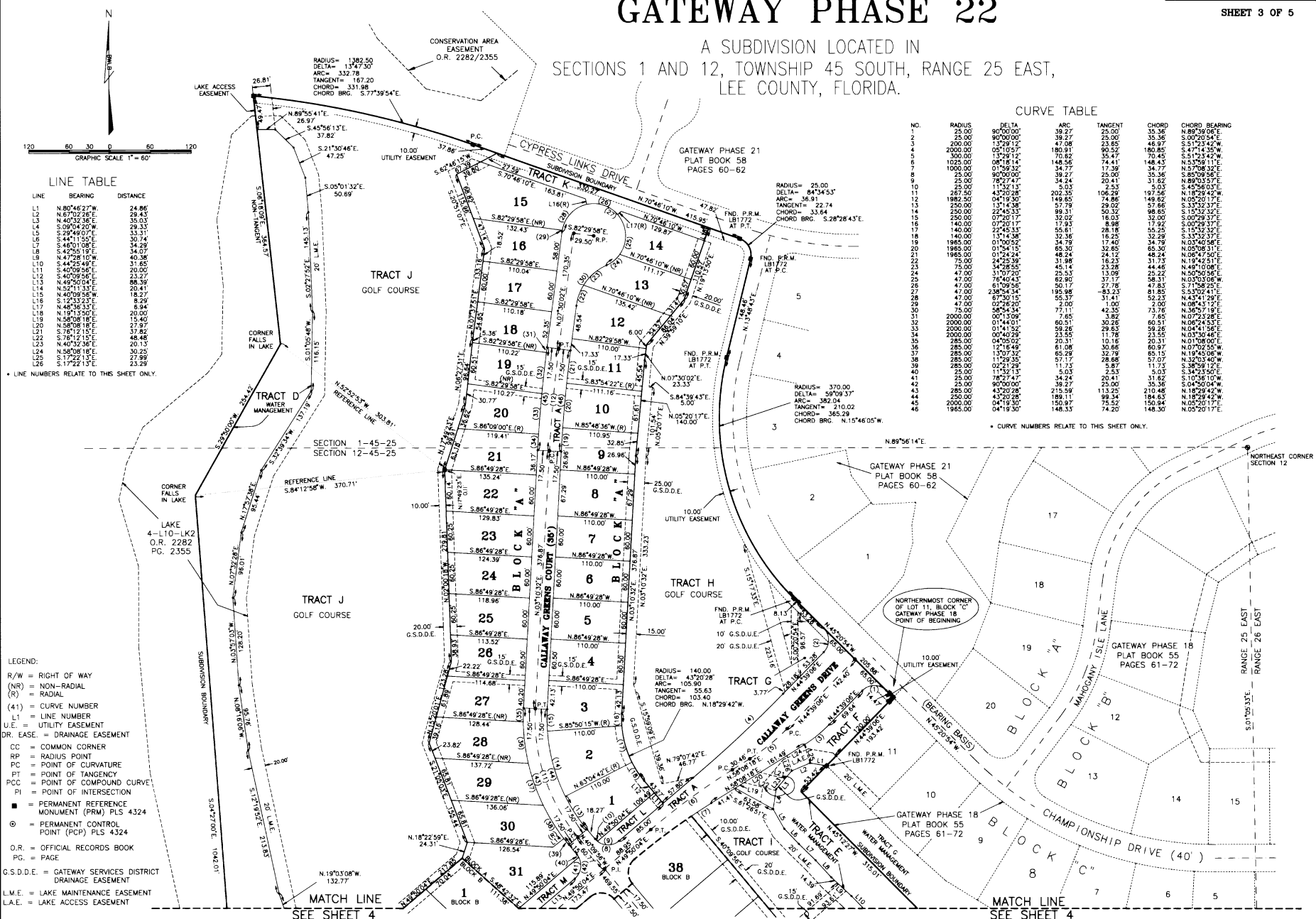
## GATEWAY PHASE 22

A SUBDIVISION LOCATED IN  
SECTIONS 1 AND 12, TOWNSHIP 45 SOUTH, RANGE 25 EAST,  
LEE COUNTY, FLORIDA.

CURVE TABLE

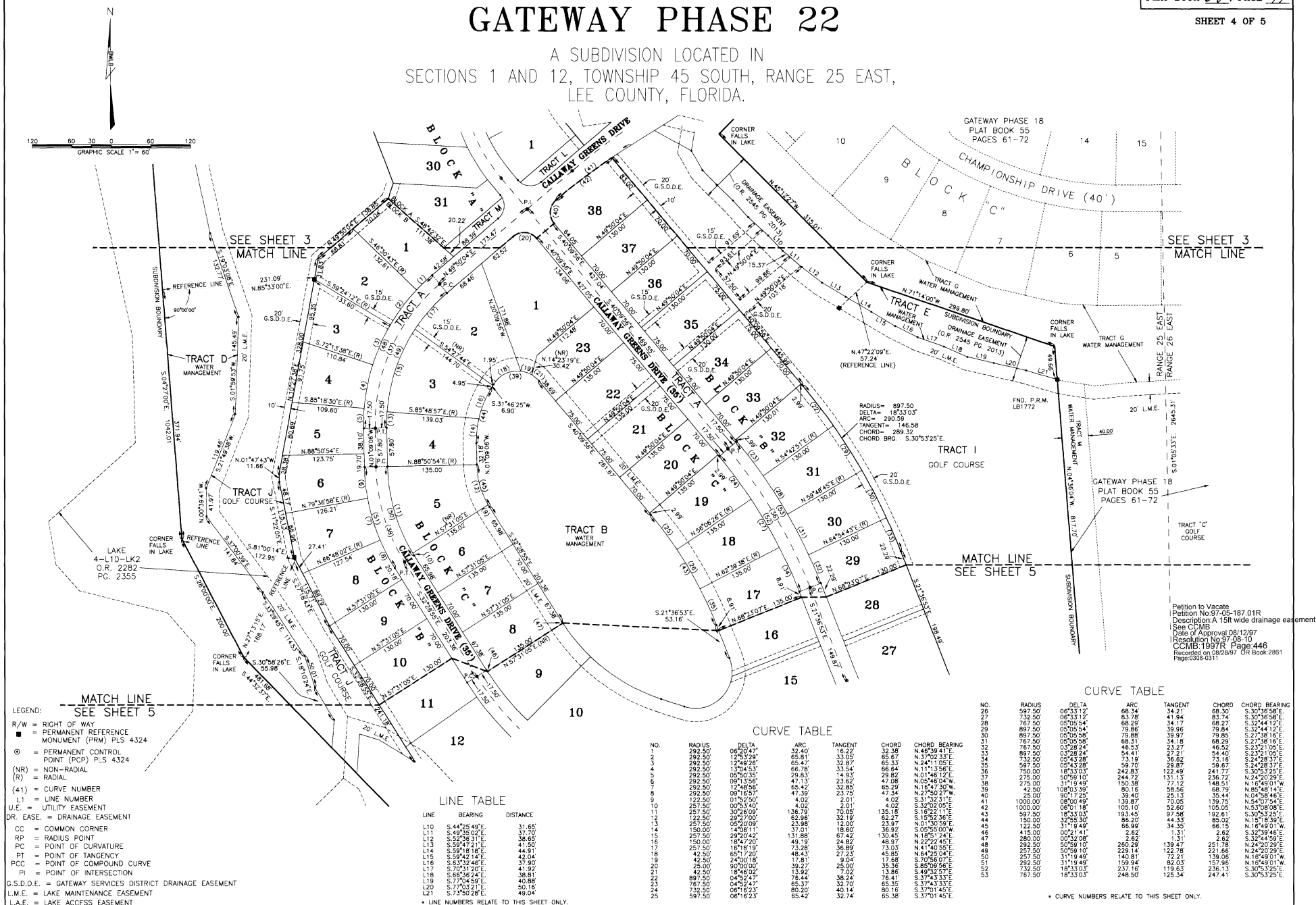
NO.	RADIUS	DELTA	ARC	TANGENT	CHORD	CHORD BEARING
1	25.00	90°00'00"	39.27	25.00	35.36	N.89°39'06"E
2	25.00	90°00'00"	39.27	25.00	35.36	S.00°20'34"E
3	200.00	13°29'12"	47.08	23.85	48.97	S.51°23'42"W
4	200.00	05°10'57"	90.91	90.52	160.85	S.47°14'35"W
5	300.00	13°29'12"	70.82	35.47	73.45	S.51°23'42"W
6	1025.00	08°18'14"	148.56	74.41	148.43	N.53°09'11"E
7	1000.00	01°59'32"	34.77	17.39	34.77	N.57°08'32"E
8	25.00	90°00'00"	39.27	25.00	35.36	S.85°09'56"E
9	25.00	18°27'47"	34.24	20.41	51.62	N.88°03'57"E
10	25.00	11°32'13"	5.03	2.53	5.03	S.45°56'03"E
11	25.00	43°20'28"	202.35	106.29	197.56	N.18°29'42"W
12	1982.50	04°19'30"	149.85	74.86	149.62	N.05°20'17"E
13	250.00	13°14'48"	57.79	28.92	57.66	S.33°12'37"E
14	250.00	22°45'33"	99.31	50.32	98.85	S.15°32'37"E
15	250.00	07°20'17"	32.02	16.05	32.00	S.00°29'37"E
16	140.00	07°20'17"	17.93	8.98	17.92	S.00°29'37"E
17	140.00	22°45'33"	55.61	28.18	55.25	S.15°32'37"E
18	140.00	13°14'48"	32.38	16.23	32.28	S.33°12'37"E
19	1985.00	01°00'52"	34.79	17.40	34.79	N.03°40'58"E
20	1985.00	01°54'15"	65.30	32.85	65.30	N.05°08'31"E
21	1985.00	01°24'24"	48.24	24.12	48.24	N.06°47'50"E
22	75.00	24°25'39"	31.88	16.23	31.73	N.19°42'51"E
23	75.00	34°28'55"	45.14	23.28	44.46	N.48°10'08"E
24	47.00	31°07'50"	55.53	27.76	47.83	N.50°50'58"E
25	47.00	76°40'43"	62.90	37.17	58.31	N.03°03'08"W
26	47.00	61°09'55"	50.17	27.76	47.83	N.71°58'25"E
27	47.00	238°54'34"	195.88	-83.23	81.85	S.53°02'41"E
28	47.00	87°30'15"	55.53	31.41	52.23	N.43°41'29"E
29	47.00	02°28'00"	1.00	2.00	1.00	N.08°43'12"E
30	75.00	38°54'34"	77.17	42.35	73.76	N.36°37'19"E
31	2000.00	01°13'09"	7.65	3.82	7.65	N.07°23'28"E
32	2000.00	01°44'01"	60.51	30.26	60.51	N.06°24'53"E
33	2000.00	01°41'52"	59.83	29.86	59.86	N.04°41'56"E
34	2000.00	00°40'29"	23.55	11.78	23.55	N.03°30'48"E
35	285.00	04°05'02"	20.11	10.16	20.11	N.01°08'00"E
36	285.00	12°16'49"	61.08	30.66	60.97	N.07°02'55"E
37	285.00	02°13'39"	32.76	16.38	32.76	N.19°45'08"W
38	285.00	11°29'35"	57.17	28.68	57.07	N.32°03'40"W
39	285.00	04°31'35"	11.73	5.87	11.73	S.38°29'12"E
40	25.00	13°32'13"	5.03	2.53	5.03	S.45°56'03"E
41	25.00	78°27'47"	34.24	20.41	51.62	S.10°36'10"W
42	25.00	90°00'00"	39.27	25.00	35.36	S.04°50'04"W
43	285.00	43°20'28"	215.59	113.25	210.48	N.18°29'42"W
44	250.00	43°20'28"	186.11	98.34	184.63	N.18°29'42"W
45	2000.00	04°19'30"	150.97	75.52	150.94	N.05°20'17"E
46	1985.00	04°19'30"	148.53	74.20	148.30	N.05°20'17"E

\* CURVE NUMBERS RELATE TO THIS SHEET ONLY.



# GATEWAY PHASE 22

A SUBDIVISION LOCATED IN  
SECTIONS 1 AND 12, TOWNSHIP 45 SOUTH, RANGE 25 EAST,  
LEE COUNTY, FLORIDA.



## GATEWAY PHASE 22

A SUBDIVISION LOCATED IN  
SECTIONS 1 AND 12, TOWNSHIP 45 SOUTH, RANGE 25 EAST,  
LEE COUNTY, FLORIDA.

