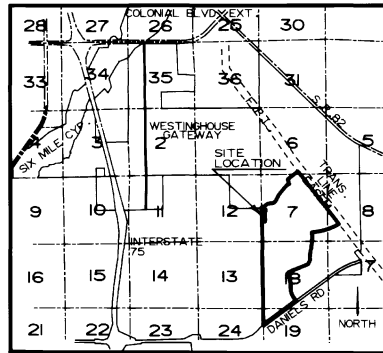


# GATEWAY PHASE 8

**NOTICE:**  
 LANDS DESCRIBED IN THIS PLAT ARE SUBDIVIDED BY THE DEVELOPER WITHOUT THE ROADS, DRAINAGE AND SEWER FACILITIES BEING SPECIFICALLY ACCEPTED FOR MAINTENANCE BY LEE COUNTY. ANY PURCHASER OF A LOT IN THIS SUBDIVISION IS ADVISED THAT HE MAY BE SUBJECT TO ASSESSMENT OR CALLED UPON TO BEAR A PORTION OF OR ALL OF THE EXPENSE OF CONSTRUCTION, MAINTENANCE OR IMPROVEMENT OF ROADS, DRAINAGE AND SEWER FACILITIES.

A SUBDIVISION LOCATED IN  
 SECTION 7, T45S, R26E AND  
 SECTION 12, T45S, R25E  
 LEE COUNTY, FLORIDA



**LOCATION MAP**

**APPROVAL**

THIS PLAT ACCEPTED THIS 10<sup>th</sup> DAY OF APRIL A.D. 1991, IN OPEN MEETING OF THE BOARD OF COUNTY COMMISSIONERS OF LEE COUNTY, FLORIDA.

*Manning*  
 APPROVED: CHAIRMAN OF THE BOARD

*Charlie Green*  
 ATTEST: CLERK OF COURT

*Paul D. Bangs*  
 APPROVED: DIRECTOR, DIVISION OF DEVELOPMENT REVIEW

*Joan W. Stoltz*  
 APPROVED: COUNTY ATTORNEY

*Tom B. ...*  
 APPROVED: DIRECTOR, DEPARTMENT OF COMMUNITY DEVELOPMENT



**CERTIFICATION**

**8007721**

I HEREBY CERTIFY THAT THE ATTACHED PLAT OF GATEWAY PHASE 8, LEE COUNTY, FLORIDA, HAS BEEN EXAMINED BY ME AND FROM MY EXAMINATION I FIND THAT SAID PLAT COMPLIES WITH THE REQUIREMENTS OF CHAPTER 177, LAWS OF FLORIDA. I FURTHER CERTIFY THAT THIS PLAT WAS FILED FOR RECORD AT 9:12 A.M., THIS 16<sup>th</sup> DAY OF APRIL A.D., 1991, AND DULY RECORDED IN PLAT BOOK 47 AT PAGES 732-734 PUBLIC RECORDS OF LEE COUNTY, FLORIDA.

*Charlie Green*  
 CLERK OF COURT



**GATEWAY SERVICES DISTRICT**

THIS PLAT APPROVED IN OPEN MEETING OF THE GATEWAY SERVICES DISTRICT THIS 12TH DAY OF NOVEMBER, 1990. THE DISTRICT HEREBY ACKNOWLEDGES ACCEPTANCE OF DRAINAGE EASEMENTS AND DRAINAGE OF ALL LANDS CONTAINED WITHIN THIS PLAT.

*David W. Caldwell*  
 WITNESS AS TO BOTH

*Douglas S. Brown*  
 DOUGLAS G. BROWN, PRESIDENT  
 GATEWAY SERVICES DISTRICT

*Cathy J. Fanelly*  
 WITNESS AS TO BOTH

*Stam R. White*  
 STEVEN WHITLEY, SECRETARY  
 GATEWAY SERVICES DISTRICT

**SURVEYOR'S CERTIFICATION**

I HEREBY CERTIFY THAT THE ATTACHED PLAT OF GATEWAY PHASE 8, LEE COUNTY, FLORIDA, IS A TRUE AND CORRECT REPRESENTATION OF THE HEREIN DESCRIBED LAND ACCORDING TO A RECENT SURVEY MADE AND PLATTED UNDER MY DIRECTION AND SUPERVISION AND THAT THE SURVEY DATA COMPLIES WITH ALL OF THE REQUIREMENTS OF CHAPTER 177, FLORIDA STATUTES. I FURTHER CERTIFY THAT THE PERMANENT REFERENCE MONUMENTS (P.R.M.'S) HAVE BEEN PLACED AT THE LOCATIONS SHOWN ON THIS PLAT.

*Thomas Jackson Garris*  
 THOMAS JACKSON GARRIS  
 PROFESSIONAL LAND SURVEYOR  
 FLORIDA CERTIFICATE NUMBER 3741  
13<sup>th</sup> DAY OF February 1991

**NOTES:**

1. ALL DIMENSIONS ARE IN FEET AND DECIMALS THEREOF.
2. ALL DIMENSIONS ON CURVES ARE ARC LENGTHS UNLESS OTHERWISE NOTED "L" = ARC.
3. BASIS FOR BEARING IS THE WEST LINE OF THE SOUTHWEST 1/4 OF SECTION 17, TOWNSHIP 45 SOUTH, RANGE 26 EAST BEING N 00°-57'-26 W.
4. G.S.D.D.E. AND G.S.D.U.E. INDICATES GATEWAY SERVICES DISTRICT DRAINAGE EASEMENTS AND UTILITY EASEMENTS RESPECTFULLY.
5. ALL CURVES INDICATED ARE CIRCULAR.
6. ● INDICATES PERMANENT REFERENCE MONUMENT (P.R.M.)
7. ● INDICATES PERMANENT CONTROL POINT (P.C.P.)
8. D.E. = DRAINAGE EASEMENT
9. U.E. = UTILITY EASEMENT
10. A 10.0 FOOT UTILITY EASEMENT IS RESERVED ALONG THE FRONT LINE OF EACH LOT WITHIN BLOCK "A". SEE PLAT FOR ADDITIONAL EASEMENTS.
11. (NR) INDICATES NON-RADIAL LINE.

**ACKNOWLEDGEMENT**

STATE OF FLORIDA  
 COUNTY OF LEE

I HEREBY CERTIFY THAT ON THIS DAY PERSONALLY APPEARED BEFORE ME, TED L. NORRIS, PRESIDENT OF CHRISTIAN-LOYD DEVELOPMENT CORPORATION, GENERAL PARTNER OF FIRST TEE DEVELOPERS, LTD., A FLORIDA LIMITED PARTNERSHIP, TO ME KNOWN TO BE THE PERSON DESCRIBED IN AND WHO EXECUTED THE FOREGOING DEDICATION AND HE ACKNOWLEDGED THE EXECUTION THEREOF TO BE HIS OWN FREE ACT AND DEED AS SUCH AN OFFICER FOR THE USE AND PURPOSES THEREIN MENTIONED. WITNESS MY HAND AND OFFICIAL SEAL AT FORT MYERS, SAID COUNTY AND STATE THIS 12<sup>th</sup> DAY OF FEBRUARY, 1991 A.D.

*Joan Finn*  
 NOTARY PUBLIC STATE OF FLORIDA AT LARGE  
 MY COMMISSION EXPIRES: July 31, 1991

NOTICE

THERE MAY BE ADDITIONAL RESTRICTIONS THAT ARE NOT RECORDED ON THIS PLAT THAT MAY BE FOUND IN THE PUBLIC RECORDS OF THIS COUNTY.

PREPARED BY:  
 HOLE, MONTES AND ASSOCIATES, INC  
 6202-F PRESIDENTIAL CT. S.W.  
 FT. MYERS, FLA. 33919 (813) 481-7874

**DEDICATION**

KNOW ALL MEN BY THESE PRESENTS THAT WESTINGHOUSE GATEWAY COMMUNITIES, INC., A FLORIDA CORPORATION, AND FIRST TEE DEVELOPERS, LTD., A FLORIDA LIMITED PARTNERSHIP, OWNERS OF THE LANDS DESCRIBED HEREIN HAVE CAUSED THIS PLAT TO BE MADE AND SUCH LANDS TO BE SUBDIVIDED AS SHOWN HEREON; SAID PLAT TO BE KNOWN AS GATEWAY PHASE 8 AND DO MAKE THE FOLLOWING DEDICATIONS:

THE ROAD RIGHTS-OF-WAY OF GATEWAY GREENS DRIVE AND WESTLINKS DRIVE (HEREINAFTER COLLECTIVELY REFERRED TO AS TRACT "A") AND TRACT "E" TO THE GATEWAY GREENS COMMUNITY ASSOCIATION, INC. FOR THE BENEFIT OF ITS PRESENT AND FUTURE MEMBERS, ITS SUCCESSORS AND ITS ASSIGNS, AND THEIR TENANTS, INVITEES, LICENSEES, MORTGAGEES, AND EMPLOYEES, RESERVING UNTO WESTINGHOUSE GATEWAY COMMUNITIES, INC. ITS SUCCESSORS, ITS ASSIGNS, EMPLOYEES AND INVITEES A PERPETUAL RIGHT FOR INGRESS AND EGRESS ON AND OVER SAID TRACTS "A" AND "E".

THE ROAD RIGHTS-OF-WAY OF SABAL DUNES LANE, SABAL LAKES LANE AND SABAL GREENS LANE, TRACTS "F", "G" AND "H" RESPECTIVELY; TRACTS "B", "C" AND "D", THE LANDSCAPE TRANSITION YARD AND PRIVACY WALL EASEMENT TO THE SABAL DUNES COMMUNITY ASSOCIATION, INC. FOR THE BENEFIT OF ITS PRESENT AND FUTURE MEMBERS, ITS SUCCESSORS AND ITS ASSIGNS AND THEIR TENANTS, INVITEES, LICENSEES, MORTGAGEES, AND EMPLOYEES.

LAKE MAINTENANCE AND DRAINAGE EASEMENTS SHOWN HEREON ARE DEDICATED TO THE GATEWAY SERVICES DISTRICT.

AN EASEMENT FOR DRAINAGE AND UTILITY PURPOSES ON, AND UNDER TRACTS "A", "E", "F", "G" & "H" IS HEREBY GRANTED TO THE GATEWAY SERVICES DISTRICT AND PUBLIC UTILITIES.

ALL UTILITY EASEMENTS SHOWN HEREON ARE FOR PURPOSES OF INSTALLATION, REPAIR AND MAINTENANCE OF WATER, SEWER, ELECTRIC AND TELEPHONE AND WESTINGHOUSE GATEWAY COMMUNITIES, INC. HEREBY RESERVES TO GATEWAY / JONES COMMUNICATIONS, LTD. ITS SUCCESSORS AND ASSIGNS THE ADDITIONAL AND EXCLUSIVE USE OF SAID UTILITY EASEMENTS FOR CABLE TELEVISION PURPOSES.

IN WITNESS WHEREOF, WESTINGHOUSE GATEWAY COMMUNITIES, INC. AND FIRST TEE DEVELOPERS, LTD. HAVE CAUSED THIS DEDICATION TO BE EXECUTED BY THEIR DULY AUTHORIZED OFFICERS.  
 THIS 8<sup>th</sup> DAY OF February 1991 A.D.

*Joan Finn*  
 WITNESS

*James H. Schmoyer*  
 WITNESS

WESTINGHOUSE GATEWAY COMMUNITIES, INC.  
 BY *Jerry H. Schmoyer*  
 JERRY H. SCHMOYER, EXEC. VICE PRES.

FIRST TEE DEVELOPERS, LTD.,  
 A FLORIDA LIMITED PARTNERSHIP, BY  
 CHRISTIAN-LOYD DEVELOPMENT CORPORATION, GENERAL PARTNER

*Joan Finn*  
 WITNESS

BY *Ted L. Norris*  
 TED L. NORRIS, PRESIDENT

**ACKNOWLEDGEMENT**

STATE OF FLORIDA  
 COUNTY OF LEE

I HEREBY CERTIFY THAT ON THIS DAY PERSONALLY APPEARED BEFORE ME, JERRY H. SCHMOYER, EXECUTIVE VICE PRESIDENT OF WESTINGHOUSE GATEWAY COMMUNITIES, INC., A FLORIDA CORPORATION, TO ME KNOWN TO BE THE PERSON DESCRIBED IN AND WHO EXECUTED THE FOREGOING DEDICATION AND HE ACKNOWLEDGED THE EXECUTION THEREOF TO BE HIS OWN FREE ACT AND DEED AS SUCH AN OFFICER FOR THE USE AND PURPOSES THEREIN MENTIONED. WITNESS MY HAND AND OFFICIAL SEAL AT FORT MYERS, SAID COUNTY AND STATE THIS 8<sup>th</sup> DAY OF February, 1991 A.D.

*Joan Finn*  
 NOTARY PUBLIC STATE OF FLORIDA AT LARGE  
 MY COMMISSION EXPIRES: July 31, 1991

D.O. 8-1-86 GATEWAY GREENS DRIVE  
 D.O. 10-8-89 PARCEL 20 - 1  
 D.O. 7-1-90 PARCEL 20 - 2  
 D.O. 3-9-90 WESTLINKS - 1

### GATEWAY PHASE 8

A SUBDIVISION LOCATED IN A PORTION OF THE WEST HALF OF SECTION 7, TWSP. 45 SOUTH, RANGE 26 EAST, AND A PORTION OF THE NORTHEAST QUARTER OF SECTION 12, TWSP. 45 SOUTH, RANGE 25 EAST, LEE COUNTY, FLORIDA.

HOLE, MONTES AND ASSOCIATES  
CONSULTING ENGINEERS AND SURVEYORS  
6202F PRESIDENTIAL COURT  
FORT MYERS, FLORIDA 33919  
(813) 481-7874

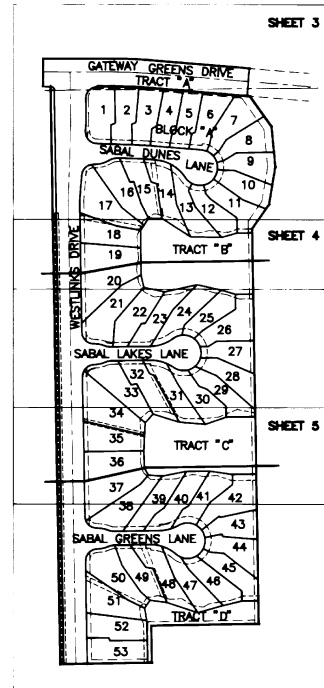
PROPERTY DESCRIPTION

A PARCEL OF LAND LOCATED IN A PORTION OF THE WEST HALF OF SECTION 7, TOWNSHIP 45 SOUTH, RANGE 26 EAST, AND A PORTION OF THE NORTHEAST QUARTER OF SECTION 12, TOWNSHIP 45 SOUTH, RANGE 25 EAST, LEE COUNTY, FLORIDA; BEING MORE PARTICULARLY DESCRIBED AS FOLLOWS:

BEGIN AT THE SOUTHWEST CORNER OF THE NORTHWEST QUARTER OF SECTION 7, TOWNSHIP 45 SOUTH, RANGE 26 EAST, THENCE RUN N. 01°05'33" W. FOR A DISTANCE OF 10.00 FEET; THENCE RUN S. 89°55'12" W. FOR A DISTANCE OF 19.52 FEET; THENCE RUN N. 00°04'48" W. FOR A DISTANCE OF 70.00 FEET; THENCE RUN N. 89°55'12" E. FOR A DISTANCE OF 182.84 FEET; TO THE BEGINNING OF A TANGENTIAL CIRCULAR CURVE, CONCAVE TO THE SOUTH, WHOSE RADIUS POINT BEARS S. 00°04'48" E., A DISTANCE OF 1035.00 FEET THEREFROM; THENCE RUN EASTERLY ALONG THE ARC OF SAID CURVE TO THE RIGHT HAVING A RADIUS OF 1035.00 FEET, THROUGH A CENTRAL ANGLE OF 04°39'42", SUBTENDED BY A CHORD OF 84.19 FEET AT A BEARING OF S. 87°44'57" E., FOR A DISTANCE OF 84.21 FEET; THENCE RUN S. 85°25'06" E. FOR A DISTANCE OF 262.76 FEET; THENCE RUN S. 04°34'54" W. FOR A DISTANCE OF 70.00 FEET; THENCE RUN S. 85°25'06" E. FOR A DISTANCE OF 6.79 FEET; THENCE RUN S. 35°45'00" E FOR A DISTANCE OF 94.00 FEET; THENCE RUN S. 05°41'00" E. FOR A DISTANCE OF 103.00 FEET; THENCE RUN S. 09°39'00" W. FOR A DISTANCE OF 96.00 FEET; THENCE RUN S. 35°00'00" W. FOR A DISTANCE OF 75.71 FEET; THENCE RUN S. 00°57'26" E. FOR A DISTANCE OF 999.90 FEET; THENCE RUN S. 89°02'34" W. FOR A DISTANCE OF 275.09 FEET; THENCE RUN S. 00°57'26" E. FOR A DISTANCE OF 94.33 FEET; THENCE RUN S. 89°02'34" W. FOR A DISTANCE OF 234.85 FEET; THENCE RUN N. 00°57'26" W. ALONG THE WESTERLY LINE OF SECTION 7, TOWNSHIP 45 SOUTH, RANGE 26 EAST, FOR A DISTANCE OF 1452.63 FEET TO THE POINT OF BEGINNING; CONTAINING 17.570 ACRES OF LAND, MORE OR LESS.

SUBJECT TO EASEMENTS, RESTRICTIONS AND RESERVATIONS OF RECORD.

KEY MAP



### MORTGAGEE'S CONSENT TO DEDICATION

KNOW ALL MEN BY THESE PRESENTS THAT WESTINGHOUSE GATEWAY COMMUNITIES, INC. AS HOLDER OF A MORTGAGE RECORDED IN OFFICIAL RECORD BOOK 2107 AT PAGES 1144 THROUGH 1148 OF THE PUBLIC RECORDS OF LEE COUNTY, FLORIDA ON THE HEREIN DESCRIBED LANDS DOES HEREBY JOIN IN THE PLAT DEDICATION, APPEARING HEREON THIS 8th DAY OF February, 1991.

Joann Finn WESTINGHOUSE GATEWAY COMMUNITIES, INC.  
WITNESS  
Laura August BY Jerry H. Schmoyer  
WITNESS JERRY H. SCHMOYER, EXEC. VICE PRES.

### ACKNOWLEDGEMENT

STATE OF FLORIDA  
COUNTY OF LEE

THE FOREGOING INSTRUMENT WAS ACKNOWLEDGED BEFORE ME THIS 8th DAY OF February, 1991 A.D. BY JERRY H. SCHMOYER, EXEC. VICE PRESIDENT OF WESTINGHOUSE GATEWAY COMMUNITIES, INC., A FLORIDA CORPORATION, ON BEHALF OF THE CORPORATION.

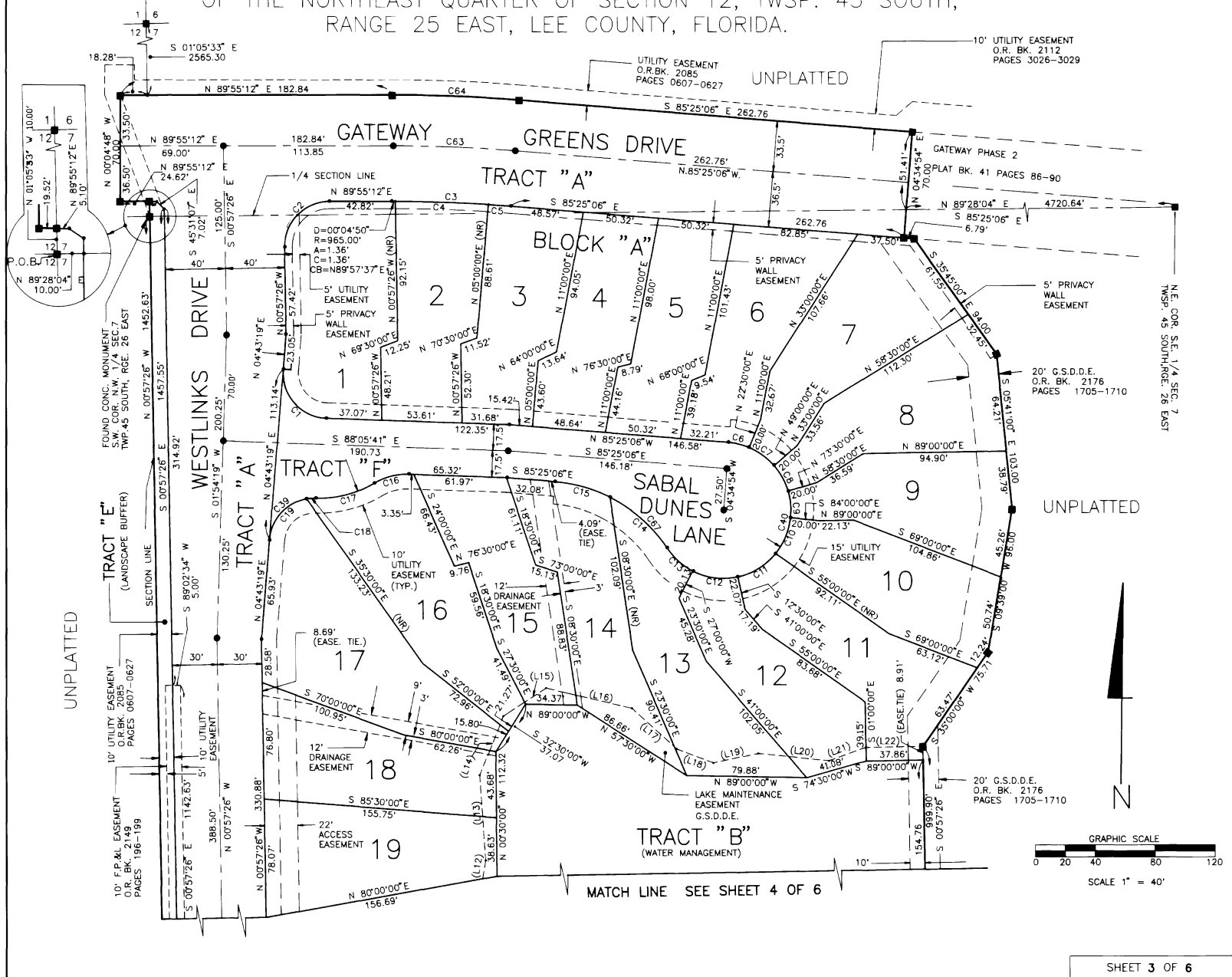
Joann Finn  
NOTARY PUBLIC STATE OF FLORIDA AT LARGE

MY COMMISSION EXPIRES: July 31, 1991

# GATEWAY PHASE 8

A SUBDIVISION LOCATED IN A PORTION OF THE WEST HALF OF SECTION 7, TWSP. 45 SOUTH, RANGE 26 EAST, AND A PORTION OF THE NORTHEAST QUARTER OF SECTION 12, TWSP. 45 SOUTH, RANGE 25 EAST, LEE COUNTY, FLORIDA.

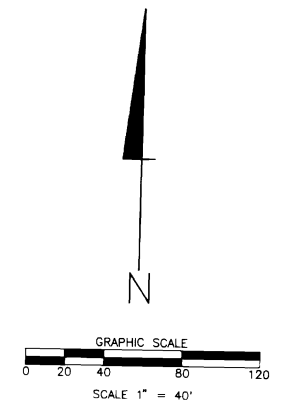
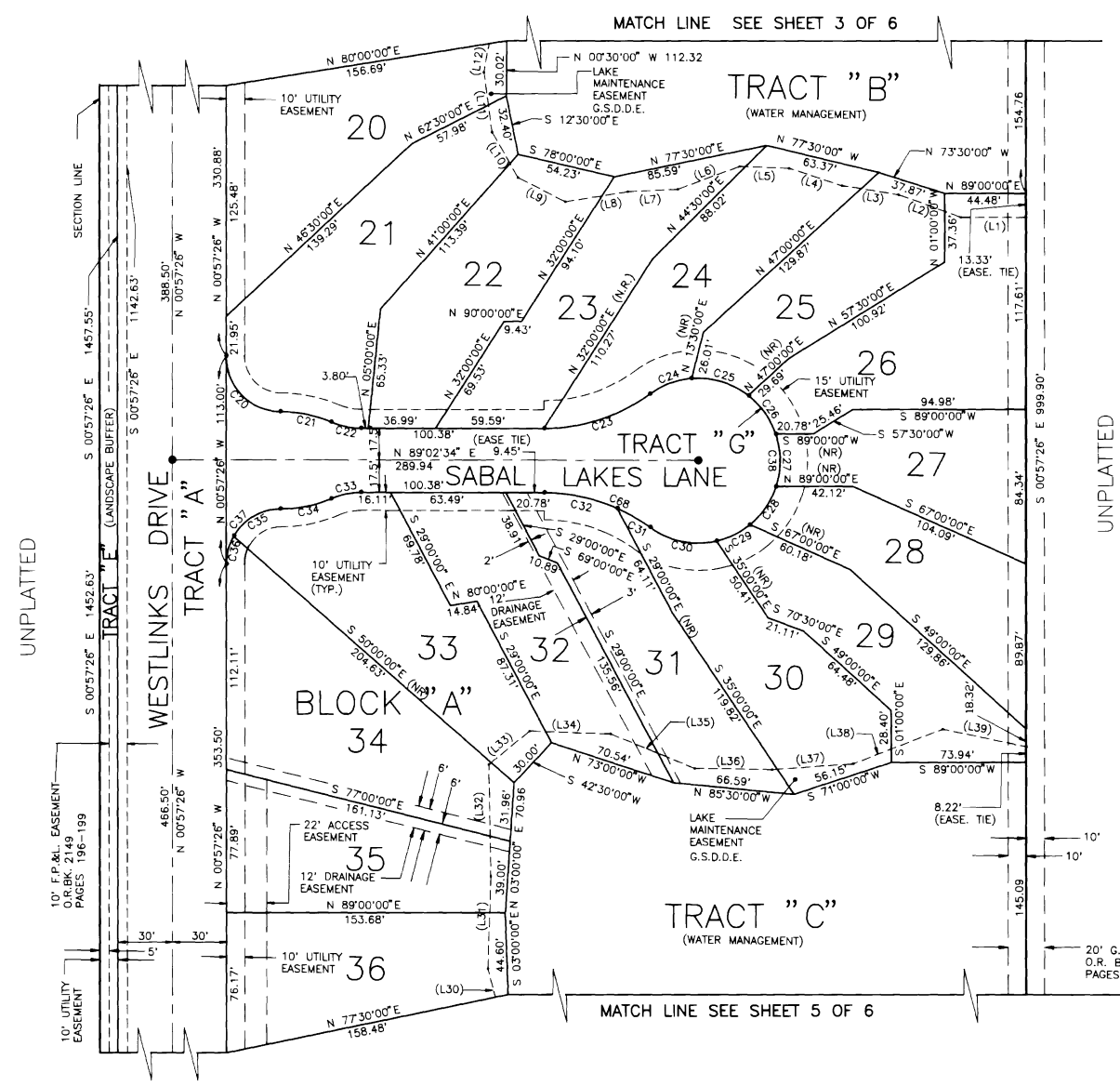
HOLE, MONTES AND ASSOCIATES  
CONSULTING ENGINEERS AND SURVEYORS  
6202F PRESIDENTIAL COURT  
FORT MYERS, FLORIDA 33919  
(813) 481-7874



HOLE, MONTES AND ASSOCIATES  
 CONSULTING ENGINEERS AND SURVEYORS  
 6202F PRESIDENTIAL COURT  
 FORT MYERS, FLORIDA 33919  
 (813) 481-7874

### GATEWAY PHASE 8

A SUBDIVISION LOCATED IN A PORTION OF THE WEST HALF OF SECTION 7, TWSP. 45 SOUTH, RANGE 26 EAST, AND A PORTION OF THE NORTHEAST QUARTER OF SECTION 12, TWSP. 45 SOUTH, RANGE 25 EAST, LEE COUNTY, FLORIDA.



UNPLATTED

UNPLATTED

10' F.P.H. EASEMENT  
 O.R. BK. 2149  
 PAGES 196-199

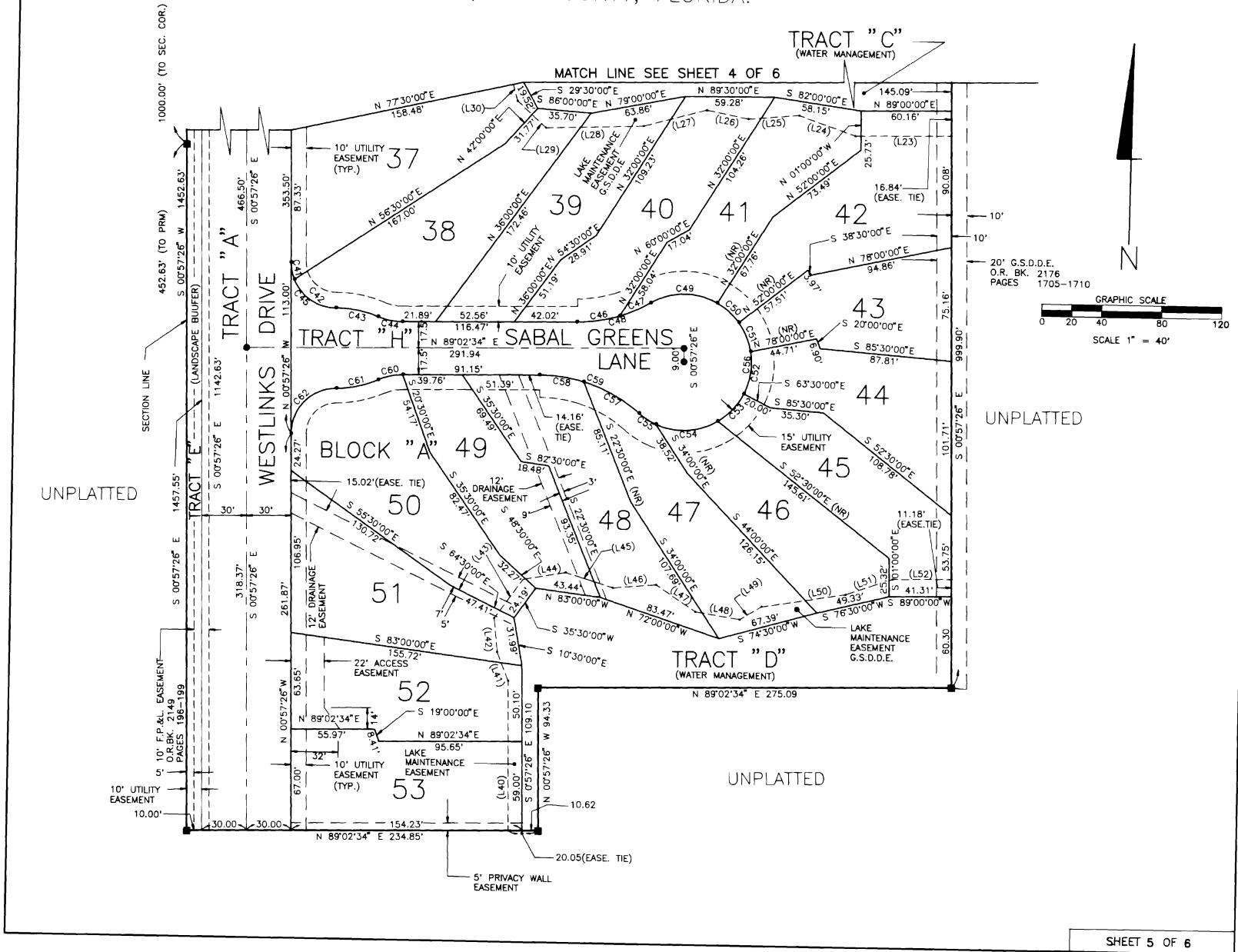
10' UTILITY  
 EASEMENT

20' G.S.D.D.E.  
 O.R. BK. 2176  
 PAGES 1705-1710

GATEWAY PHASE 8

A SUBDIVISION LOCATED IN A PORTION OF THE WEST HALF OF SECTION 7, TWSP. 45 SOUTH, RANGE 26 EAST, AND A PORTION OF THE NORTHEAST QUARTER OF SECTION 12, TWSP. 45 SOUTH, RANGE 25 EAST, LEE COUNTY, FLORIDA.

HOLE, MONTES AND ASSOCIATES  
CONSULTING ENGINEERS AND SURVEYORS  
6202F PRESIDENTIAL COURT  
FORT MYERS, FLORIDA 33919  
(813) 481-7874



GATEWAY PHASE 8

A SUBDIVISION LOCATED IN A PORTION OF THE WEST HALF OF SECTION 7, TWSP. 45 SOUTH, RANGE 26 EAST, AND A PORTION OF THE NORTHEAST QUARTER OF SECTION 12, TWSP. 45 SOUTH, RANGE 26 EAST, LEE COUNTY, FLORIDA.

HOLE, MONTES AND ASSOCIATES  
CONSULTING ENGINEERS AND SURVEYORS  
6202F PRESIDENTIAL COURT  
FORT MYERS, FLORIDA 33919  
(813) 481-7874

CURVE TABLE

CURVE NUMBER	RADIUS	DELTA	ARC LENGTH	CHORD LENGTH	CHORD BEARING
1	30.00	92°49'00"	48.60	43.46	S 41°41'11" E
2	30.00	90°52'38"	47.58	42.75	N 44°28'53" E
3	965.00	04°39'42"	78.52	78.49	S 87°44'57" E
4	965.00	03°41'35"	62.20	62.19	S 88°09'10" E
5	965.00	00°53'17"	14.96	14.96	S 85°51'44" E
6	45.00	17°55'06"	14.07	14.02	S 76°27'33" E
7	45.00	26°30'00"	20.81	20.63	S 54°15'00" E
8	45.00	24°30'00"	19.24	19.10	S 28°45'00" E
9	45.00	22°30'00"	17.67	17.56	S 05°15'00" E
10	45.00	33°25'22"	26.25	25.88	S 22°42'41" W
11	45.00	38°04'38"	29.91	29.36	S 58°27'41" W
12	45.00	39°30'00"	31.02	30.41	N 82°45'00" W
13	45.00	29°12'55"	22.95	22.70	N 48°23'33" W
14	100.00	29°30'30"	51.50	50.93	S 48°32'20" E
15	100.00	22°07'30"	38.62	38.38	S 74°21'21" E
16	42.50	32°29'27"	24.10	23.78	N 75°39'36" E
17	72.50	32°29'27"	41.11	40.56	N 75°39'36" E
18	30.00	11°35'33"	6.07	6.06	N 88°06'32" E
19	30.00	75°35'27"	39.58	36.77	N 42°31'02" E
20	30.00	90°00'00"	47.12	42.43	S 45°57'26" E
21	72.50	22°49'06"	28.87	28.68	S 79°32'53" E
22	42.50	22°49'06"	16.93	16.81	S 79°32'53" E
23	100.00	35°52'13"	62.61	61.59	N 71°06'28" E
24	45.00	31°20'30"	24.62	24.31	N 68°50'36" E
25	45.00	42°10'56"	33.13	32.39	S 74°23'40" E
26	45.00	33°19'05"	26.17	25.80	S 36°38'40" E
27	45.00	37°11'09"	29.21	28.70	S 01°23'33" E
28	45.00	32°38'48"	25.64	25.30	S 33°31'25" W
29	45.00	26°14'25"	20.61	20.43	S 62°58'01" W
30	45.00	48°49'34"	38.35	37.20	N 79°29'59" W
31	100.00	12°02'09"	21.01	20.97	N 61°06'17" W
32	100.00	23°50'04"	41.60	41.30	N 79°02'23" W
33	42.50	22°49'06"	16.93	16.81	S 77°38'01" W
34	72.50	22°49'06"	28.87	28.68	S 77°38'01" W
35	30.00	59°54'58"	31.37	29.96	S 59°05'06" W
36	30.00	36°03'02"	15.75	15.57	S 14°05'06" W
37	30.00	90°00'00"	47.12	42.43	S 44°02'34" W
38	45.00	25°14'42"	197.72	72.93	S 00°57'26" E
39	30.00	87°11'00"	45.65	41.37	N 48°18'49" E
40	45.00	231°38'01"	181.92	81.02	S 30°23'55" W
41	30.00	21°54'52"	11.47	11.40	S 11°54'51" E
42	30.00	68°05'08"	35.65	33.59	S 56°54'51" E
43	72.50	22°49'06"	28.87	28.68	S 79°32'53" E
44	42.50	22°49'06"	16.93	16.81	S 79°32'53" E
45	30.00	90°00'00"	47.12	42.43	S 45°57'26" E
46	100.00	16°18'34"	28.47	28.37	N 80°53'17" E
47	100.00	12°57'01"	22.60	22.55	N 66°15'30" E
48	100.00	29°15'35"	51.07	50.51	N 74°24'47" E
49	45.00	59°01'15"	46.35	44.33	N 89°17'37" E
50	45.00	24°35'51"	19.32	19.17	S 48°53'49" E
51	45.00	26°39'00"	20.93	20.74	S 23°16'24" E
52	45.00	36°26'55"	28.63	28.15	S 08°16'33" W
53	45.00	32°19'25"	25.39	25.05	S 42°39'42" W
54	45.00	54°34'42"	42.87	41.26	S 86°06'45" W
55	45.00	17°12'00"	13.51	13.46	N 57°59'54" W
56	45.00	25°04'06"	196.99	73.35	S 05°11'33" W
57	100.00	24°22'49"	42.55	42.23	N 61°35'18" W
58	100.00	17°10'43"	29.98	29.87	N 82°22'04" W
59	100.00	41°33'32"	72.53	70.95	N 70°10'40" W
60	42.50	22°49'06"	16.93	16.81	S 77°38'01" W
61	72.50	22°49'06"	28.87	28.68	S 77°38'01" W
62	30.00	90°00'00"	47.12	42.43	S 44°02'34" W
63	1001.50	04°39'42"	81.49	81.46	S 87°44'57" E
64	1035.00	04°39'42"	84.21	84.19	S 87°44'57" E
65	30.00	89°07'22"	46.66	42.10	S 45°31'07" E
66	30.00	40°51'35"	21.39	20.94	S 21°23'13" E
67	100.00	51°38'01"	90.12	87.10	S 59°36'06" W
68	100.00	35°52'13"	62.61	61.59	S 73°01'19" W
69	30.00	40°55'01"	21.42	20.97	N 69°37'17" E

LINE TABLE

LINE	DIRECTION	DISTANCE
1	S 89°00'00" W	35.75
2	N 71°00'00" W	36.39
3	N 82°00'00" W	31.45
4	N 73°00'00" W	30.70
5	N 89°00'00" W	27.22
6	S 69°00'00" W	36.13
7	S 86°00'00" W	27.45
8	S 80°00'00" W	34.85
9	N 64°00'00" W	29.26
10	N 31°00'00" W	28.45
11	N 09°00'00" W	32.92
12	N 10°00'00" E	28.18
13	N 04°00'00" W	56.22
14	N 22°00'00" W	42.25
15	N 57°00'00" W	33.90
16	S 77°00'00" E	58.85
17	S 48°00'00" E	39.97
18	S 69°00'00" E	26.13
19	N 78°00'00" E	30.64
20	S 84°00'00" E	47.41
21	N 70°00'00" E	26.04
22	N 89°00'00" E	38.20
23	S 89°00'00" W	64.06
24	N 71°00'00" W	39.71
25	S 85°00'00" W	33.76
26	N 79°00'00" W	28.35
27	S 75°00'00" W	43.50
28	S 88°00'00" W	65.03
29	N 48°00'00" W	25.90
30	N 15°00'00" W	27.25
31	N 01°00'00" E	50.34
32	N 02°00'00" W	60.95
33	N 50°00'00" E	28.92
34	S 89°00'00" E	44.45
35	S 69°00'00" E	50.06
36	N 80°00'00" E	42.45
37	N 85°00'00" E	44.77
38	N 68°00'00" E	52.76
39	S 79°00'00" E	46.80
40	N 00°57'26" W	98.79
41	N 22°00'00" W	20.38
42	N 06°00'00" W	22.38
43	N 36°00'00" E	31.98
44	N 80°00'00" E	28.80
45	S 73°00'00" E	32.89
46	N 85°00'00" E	28.87
47	S 57°00'00" E	31.77
48	S 81°00'00" E	29.64
49	N 59°00'00" E	16.96
50	N 81°00'00" E	56.48
51	N 71°00'00" E	32.88
52	N 89°00'00" E	39.25