

GATEWAY PHASE 18

A SUBDIVISION LOCATED IN

SECTIONS 6 & 7, TOWNSHIP 45 SOUTH, RANGE 26 EAST &
SECTIONS 1 & 12, TOWNSHIP 45 SOUTH, RANGE 25 EAST

LEE COUNTY, FLORIDA.

PLAT BOOK 55 PAGE 61
SHEET 1 of 12

LEGAL DESCRIPTION:

A PARCEL OF LAND LOCATED IN SECTIONS 6 AND 7, TOWNSHIP 45 SOUTH, RANGE 26 EAST AND SECTIONS 1 AND 12, TOWNSHIP 45 SOUTH, RANGE 25 EAST, LEE COUNTY, FLORIDA, BEING MORE PARTICULARLY DESCRIBED AS FOLLOWS:

COMMENCE AT THE MOST NORTHWESTERLY CORNER OF GATEWAY PHASE 2, ACCORDING TO THE PLAT THEREOF RECORDED IN PLAT BOOK 41 AT PAGES 86 THROUGH 90 OF THE PUBLIC RECORDS OF LEE COUNTY, FLORIDA, THE SAME BEING A POINT ON THE NORTHERLY RIGHT-OF-WAY OF GATEWAY GREENS DRIVE, A 70.00 FOOT RIGHT-OF-WAY; THENCE RUN S. 85°25'06" E., ALONG THE NORTHERLY BOUNDARY OF SAID GATEWAY PHASE 2 AND ALONG SAID NORTHERLY RIGHT-OF-WAY LINE, FOR A DISTANCE OF 14.43 FEET TO THE POINT OF BEGINNING OF THE PARCEL OF LAND HEREIN DESCRIBED; THENCE RUN N. 06°20'08" E. FOR A DISTANCE OF 40.90 FEET; THENCE RUN N. 11°39'46" E. FOR A DISTANCE OF 66.26 FEET; THENCE RUN N. 10°54'46" W. FOR A DISTANCE OF 28.34 FEET; THENCE RUN N. 21°34'17" W. FOR A DISTANCE OF 67.07 FEET; THENCE RUN N. 13°27'40" W. FOR A DISTANCE OF 28.00 FEET; THENCE RUN N. 01°33'09" E. FOR A DISTANCE OF 55.07 FEET; THENCE RUN N. 01°46'01" W. FOR A DISTANCE OF 42.75 FEET; THENCE RUN N. 18°30'52" W. FOR A DISTANCE OF 56.39 FEET; THENCE RUN N. 88°22'42" W. FOR A DISTANCE OF 160.69 FEET; THENCE RUN N. 01°05'33" W. FOR A DISTANCE OF 158.98 FEET; THENCE RUN N. 80°28'10" W. FOR A DISTANCE OF 361.45 FEET; THENCE RUN N. 16°04'09" W. FOR A DISTANCE OF 370.53 FEET; THENCE RUN N. 04°36'04" W. FOR A DISTANCE OF 87.70 FEET; THENCE RUN N. 71°14'00" W. FOR A DISTANCE OF 299.80 FEET; THENCE RUN N. 45°12'27" W. FOR A DISTANCE OF 315.01 FEET; THENCE RUN N. 44°39'06" E. FOR A DISTANCE OF 233.42 FEET; THENCE RUN S. 45°20'54" E. FOR A DISTANCE OF 47.32 FEET; THENCE RUN N. 36°18'12" E. FOR A DISTANCE OF 94.55 FEET; THENCE RUN N. 21°22'01" E. FOR A DISTANCE OF 71.54 FEET; THENCE RUN N. 36°00'00" W. FOR A DISTANCE OF 111.58 FEET; THENCE RUN N. 27°00'00" E. FOR A DISTANCE OF 267.48 FEET; THENCE RUN N. 64°00'00" E. FOR A DISTANCE OF 635.56 FEET; THENCE RUN S. 38°52'17" E. FOR A DISTANCE OF 888.52 FEET; THENCE RUN S. 00°00'00" E. FOR A DISTANCE OF 225.25 FEET; THENCE RUN S. 36°09'34" E. FOR A DISTANCE OF 254.07 FEET; THENCE RUN S. 14°02'24" E. FOR A DISTANCE OF 408.02 FEET; THENCE RUN S. 07°50'59" E. FOR A DISTANCE OF 100.83 FEET; THENCE RUN S. 11°00'21" E. FOR A DISTANCE OF 94.95 FEET; THENCE RUN S. 04°02'53" E. FOR A DISTANCE OF 96.88 FEET; THENCE RUN S. 44°14'11" E. FOR A DISTANCE OF 32.86 FEET; THENCE RUN S. 05°55'09" E. FOR A DISTANCE OF 164.75 FEET; THENCE RUN S. 02°59'03" E. FOR A DISTANCE OF 88.47 FEET; THENCE RUN S. 11°28'19" W. FOR A DISTANCE OF 182.64 FEET; THENCE RUN N. 71°09'36" W. FOR A DISTANCE OF 45.78 FEET; THENCE RUN S. 18°50'24" W. FOR A DISTANCE OF 9.00 FEET; THENCE RUN S. 01°43'15" E. FOR A DISTANCE OF 90.00 FEET; THENCE RUN S. 05°19'03" E. FOR A DISTANCE OF 71.76 FEET; THENCE RUN S. 26°12'50" E. FOR A DISTANCE OF 92.57 FEET; THENCE RUN S. 45°20'38" E. FOR A DISTANCE OF 121.97 FEET; THENCE RUN S. 32°47'26" E. FOR A DISTANCE OF 85.57 FEET; THENCE RUN S. 01°43'15" E. FOR A DISTANCE OF 188.85 FEET TO A POINT ON THE NORTHERLY BOUNDARY OF SAID GATEWAY PHASE 2, THE SAME BEING A POINT ON THE NORTHERLY RIGHT-OF-WAY LINE OF GATEWAY GREENS DRIVE AND A POINT ON A CIRCULAR CURVE, CONCAVE SOUTHEASTERLY, WHOSE RADIUS POINT BEARS S. 13°07'05" E. A DISTANCE OF 535.00 FEET; THENCE, ALONG THE NORTHERLY BOUNDARY OF SAID GATEWAY PHASE 2, ALONG SAID NORTHERLY RIGHT-OF-WAY LINE AND ALONG THE ARC OF SAID CURVE TO THE LEFT, HAVING A RADIUS OF 535.00 FEET, THROUGH A CENTRAL ANGLE OF 21°08'17", SUBTENDED BY A CHORD OF 196.26 FEET; THENCE, ALONG SAID NORTHERLY RIGHT-OF-WAY LINE AND ALONG THE ARC OF SAID CURVE TO THE RIGHT, HAVING A RADIUS OF 465.00 FEET, THROUGH A CENTRAL ANGLE OF 38°50'00", SUBTENDED BY A CHORD OF 308.20 FEET AT A BEARING OF S. 75°09'46" W. FOR A DISTANCE OF 315.20 FEET TO THE END OF SAID CURVE; THENCE RUN N. 85°25'06" W., ALONG THE NORTHERLY BOUNDARY OF SAID GATEWAY PHASE 2 AND ALONG SAID NORTHERLY RIGHT-OF-WAY LINE, FOR A DISTANCE OF 260.68 FEET TO THE POINT OF BEGINNING, CONTAINING 69.471 ACRES, MORE OR LESS.

SUBJECT TO EASEMENTS, RESERVATIONS OR RESTRICTIONS OF RECORD.

APPROVAL:

THIS PLAT ACCEPTED THIS 10th DAY OF AUGUST A.D. 1994, IN OPEN MEETING OF THE BOARD OF COUNTY COMMISSIONERS OF LEE COUNTY, FLORIDA.

Ray Judah
CHAIRMAN OF THE BOARD

Ray Judah
PRINTED NAME

Patrick G. White
COUNTY ATTORNEY

Patrick G. White
PRINTED NAME

Mary Gibbs
DIRECTOR, DEPARTMENT OF COMMUNITY DEVELOPMENT

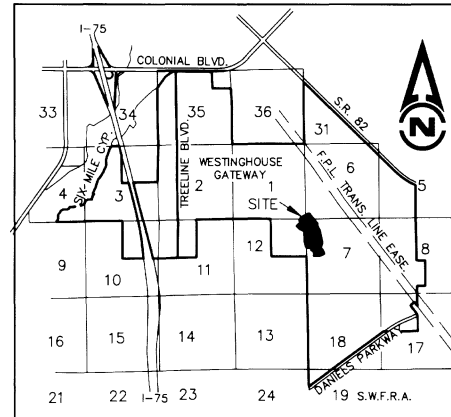
MARY GIBBS
PRINTED NAME

Charlie Green
CLERK OF COURT

Charlie Green
PRINTED NAME

Walter J. McCarthy
DIRECTOR, DIVISION OF DEVELOPMENT REVIEW

WALTER J. MCCARTHY
PRINTED NAME



LOCATION MAP

NOTICE:

LANDS DESCRIBED IN THIS PLAT ARE SUBDIVIDED BY THE DEVELOPER WITHOUT THE ROADS, DRAINAGE AND SEWER FACILITIES BEING ACCEPTED FOR MAINTENANCE BY LEE COUNTY. ANY PURCHASER OF A LOT IN THIS SUBDIVISION IS ADVISED THAT HE MAY BE SUBJECT TO ASSESSMENT OR CALLED UPON TO BEAR A PORTION OF OR ALL OF THE EXPENSE OF CONSTRUCTION, MAINTENANCE OR IMPROVEMENT OF ROADS, DRAINAGE AND SEWAGE FACILITIES.

NOTICE:

THERE MAY BE ADDITIONAL RESTRICTIONS THAT ARE NOT RECORDED ON THIS PLAT THAT MAY BE FOUND IN THE PUBLIC RECORDS OF THIS COUNTY.

NOTES:

1. ALL DIMENSIONS ARE IN FEET AND DECIMALS THEREOF.
2. ALL DIMENSIONS ON CURVES ARE ARC LENGTHS UNLESS OTHERWISE NOTED "A" = ARC.
3. BEARINGS REFER TO THE NORTH LINE OF GATEWAY PHASE 2, ACCORDING TO THE PLAT THEREOF RECORDED IN PLAT BOOK 41 AT PAGES 86 THROUGH 90 OF THE PUBLIC RECORDS OF LEE COUNTY, FLORIDA, AS BEING N. 85°25'06" W.
4. G.S.D.D.E. AND G.S.D.U.E. INDICATES GATEWAY SERVICES DISTRICT DRAINAGE EASEMENTS AND UTILITY EASEMENTS RESPECTIVELY.
5. ALL CURVES INDICATED ARE CIRCULAR.
6. ■ INDICATES PERMANENT REFERENCE MONUMENT (P.R.M.)
7. ⊙ INDICATES PERMANENT CONTROL POINT (P.C.P.)
8. D.E. = DRAINAGE EASEMENT.
9. U.E. = UTILITY EASEMENT
10. L.E. = LANDSCAPE BUFFER EASEMENT
11. A 10.0 FOOT UTILITY EASEMENT IS RESERVED ALONG THE FRONT LINE OF EACH LOT WITHIN BLOCKS "A", "B" AND "C" AND ON TRACTS "B", "C", "D", "E" AND "J" ALONG THE ROAD FRONTAGE OF CHAMPIONSHIP DRIVE. SEE PLAT FOR ADDITIONAL EASEMENTS.
12. (NR) INDICATES NON-RADIAL LINE.
13. L.M.E. = LAKE MAINTENANCE EASEMENT
14. S.E. = LANDSCAPE/SIGN EASEMENT

CERTIFICATION:

3646872

I HEREBY CERTIFY THAT THE ATTACHED PLAT OF GATEWAY PHASE 18, A SUBDIVISION LOCATED IN SECTIONS 6 & 7, T45S, R26E AND SECTIONS 1 & 12, T45S, R25E, LEE COUNTY, FLORIDA, HAS BEEN EXAMINED BY ME AND FROM MY EXAMINATION I FIND THAT SAID PLAT COMPLIES WITH THE REQUIREMENTS OF CHAPTER 177, LAWS OF FLORIDA. I FURTHER CERTIFY THAT THIS PLAT WAS FILED FOR RECORD AT 11:26 A.M. THIS 29th DAY OF AUGUST, A.D. 1994, AND DULY RECORDED IN PLAT BOOK 55 AT PAGES 61 thru 72. PUBLIC RECORDS OF LEE COUNTY, FLORIDA.

Charlie Green
CLERK OF COURT

Charlie Green
PRINTED NAME



SURVEYOR'S CERTIFICATION:

I HEREBY CERTIFY THAT THE ATTACHED PLAT OF GATEWAY PHASE 18, A SUBDIVISION LOCATED IN SECTIONS 6 & 7, T45S, R26E AND SECTIONS 1 & 12, T45S, R25E, LEE COUNTY, FLORIDA, IS A TRUE AND CORRECT REPRESENTATION OF THE HEREIN DESCRIBED LAND ACCORDING TO A RECENT SURVEY MADE AND PLATTED UNDER MY DIRECTION AND SUPERVISION AND THAT THE SURVEY DATA COMPLIES WITH ALL OF THE REQUIREMENTS OF CHAPTER 177, FLORIDA STATUTES. I FURTHER CERTIFY THAT THE PERMANENT REFERENCE MONUMENTS (P.R.M.'S) HAVE BEEN PLACED AT THE LOCATIONS SHOWN ON THIS PLAT.

Thomas J. Harris
THOMAS J. HARRIS
PROFESSIONAL LAND SURVEYOR

FLORIDA CERTIFICATE NUMBER 3741
29th DAY OF June 1994.

THIS INSTRUMENT WAS PREPARED BY

HMA & A HOLE, MONTES & ASSOCIATES
ENGINEERS - PLANNERS - SURVEYORS
NAPLES - FORT MYERS - BONITA SPRINGS
6202F PRESIDENTIAL COURT, FORT MYERS, FLORIDA (813) 481-7874

REFERENCE NO. 9369PCS

DRAWN BY

R.W.C.

D.O. #93-12-009.000

GATEWAY PHASE 18

A SUBDIVISION LOCATED IN

SECTIONS 6 & 7, TOWNSHIP 45 SOUTH, RANGE 26 EAST &
SECTIONS 1 & 12, TOWNSHIP 45 SOUTH, RANGE 25 EAST
LEE COUNTY, FLORIDA.

PLAT BOOK 152 PAGE 12
SHEET 2 of 12

DEDICATION:

KNOW ALL MEN BY THESE PRESENTS THAT GATEWAY COMMUNITIES INC., FORMERLY KNOWN AS WESTINGHOUSE GATEWAY COMMUNITIES, INC., A FLORIDA CORPORATION, ROTTUND HOMES OF FLORIDA, INC., A MINNESOTA CORPORATION, AND GATEWAY GOLF MANAGEMENT CORPORATION, A FLORIDA CORPORATION, BEING THE OWNERS OF THE HEREIN DESCRIBED LANDS HAVE CAUSED THIS PLAT OF GATEWAY PHASE 18, A SUBDIVISION OF PART OF SECTIONS 6 AND 7, TOWNSHIP 45 SOUTH, RANGE 26 EAST AND SECTIONS 1 AND 12, TOWNSHIP 45 SOUTH, RANGE 25 EAST, LEE COUNTY, FLORIDA TO BE MADE AND DO HEREBY MAKE THE FOLLOWING DEDICATIONS:

THE ROAD RIGHTS-OF-WAY OF CHAMPIONSHIP DRIVE REFERRED TO AS TRACT "A" AND MAHOGANY ISLE LANE, REFERRED TO AS TRACT "I", THE LANDSCAPE BUFFER EASEMENT AND THE LANDSCAPE / SIGN EASEMENTS ARE HEREBY DEDICATED TO THE GATEWAY GREENS COMMUNITY ASSOCIATION, INC., A FLORIDA NOT FOR PROFIT CORPORATION, FOR THE BENEFIT OF ITS PRESENT AND FUTURE MEMBERS, ITS SUCCESSORS AND ITS ASSIGNS, AND THEIR TENANTS INVITEES, LICENSEES, MORTGAGEES, AND EMPLOYEES, RESERVING UNTO GATEWAY COMMUNITIES INC., ITS SUCCESSORS, ITS ASSIGNS, EMPLOYEES AND INVITEES, A PERPETUAL RIGHT OF INGRESS AND EGRESS ON AND OVER SAID TRACTS "A" AND "I".

AN EASEMENT FOR DRAINAGE AND UTILITY PURPOSES INCLUDING INGRESS AND EGRESS ON, OVER, ACROSS, AND UNDER TRACTS "A" AND "I" IS HEREBY GRANTED TO THE GATEWAY SERVICES DISTRICT AND PUBLIC UTILITIES.

TRACTS "J" AND "O" ARE HEREBY DEDICATED TO THE GATEWAY GREENS COMMUNITY ASSOCIATION, INC., A FLORIDA NOT FOR PROFIT CORPORATION, FOR THE BENEFIT OF ITS PRESENT AND FUTURE MEMBERS, ITS SUCCESSORS AND ITS ASSIGNS, AND THEIR TENANTS INVITEES, LICENSEES, MORTGAGEES, AND EMPLOYEES, AS OPEN SPACE.

TRACTS "F", "G", "H", "K", "M", AND "N", ALL DRAINAGE EASEMENTS, THE INGRESS / EGRESS EASEMENT AND ALL LAKE MAINTENANCE EASEMENTS SHOWN HEREON ARE HEREBY DEDICATED TO THE GATEWAY SERVICES DISTRICT.

ALL UTILITY EASEMENTS SHOWN HEREON ARE FOR PURPOSES OF INSTALLATION, REPAIR AND MAINTENANCE OF WATER, SEWER, ELECTRIC, CABLE TV, AND TELEPHONE. THE UTILITY EASEMENTS ARE GRANTED TO GOVERNMENT AGENCIES, PUBLIC UTILITY COMPANIES, AND CABLE TELEVISION COMPANIES.

IN WITNESS WHEREOF GATEWAY COMMUNITIES INC., ROTTUND HOMES OF FLORIDA, INC. AND GATEWAY GOLF MANAGEMENT CORPORATION HAVE CAUSED THESE PRESENTS TO BE MADE AND SIGNED BY ITS RESPECTIVE OFFICERS THIS 22ND DAY OF JULY 1994 A.D.

WITNESSES AS TO BOTH

NAME: _____
PRINTED NAME: _____

GATEWAY COMMUNITIES INC.
(FORMERLY KNOWN AS WESTINGHOUSE
GATEWAY COMMUNITIES, INC.)

NAME: _____
PRINTED NAME: _____

JERRY H. SCHMOYER, EXEC. VICE PRESIDENT

NAME: _____
PRINTED NAME: _____

PETER D. DORAGH, ASST. SECRETARY

WITNESSES AS TO BOTH

NAME: _____
PRINTED NAME: _____

ROTTUND HOMES OF FLORIDA, INC.

ROBERT GLEASON, PRESIDENT

NAME: _____
PRINTED NAME: _____

N/A, SECRETARY

NAME: _____
PRINTED NAME: _____

WITNESSES AS TO BOTH

NAME: _____
PRINTED NAME: _____

GATEWAY GOLF MANAGEMENT CORPORATION

G. RUSSELL WEYER, VICE PRESIDENT

NAME: _____
PRINTED NAME: _____

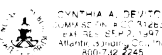
PETER D. DORAGH, SECRETARY

NAME: _____
PRINTED NAME: _____

ACKNOWLEDGEMENT:

STATE OF FLORIDA
COUNTY OF LEE

THE FOREGOING INSTRUMENT WAS ACKNOWLEDGED BEFORE ME THIS 22ND DAY OF JULY, A.D. 1994 BY JERRY H. SCHMOYER, EXECUTIVE VICE PRESIDENT AND PETER D. DORAGH, ASST. SECRETARY OF GATEWAY COMMUNITIES INC., A FLORIDA CORPORATION, ON BEHALF OF THE CORPORATION. THEY ARE PERSONALLY KNOWN TO ME OR HAVE PRODUCED _____ AS IDENTIFICATION.



MY COMMISSION EXPIRES: _____

NOTARY PUBLIC, STATE OF FLORIDA

PRINTED NAME: _____

SERIAL NUMBER (IF ANY): _____

ACKNOWLEDGEMENT:

STATE OF MINNESOTA
COUNTY OF _____

THE FOREGOING INSTRUMENT WAS ACKNOWLEDGED BEFORE ME THIS 22ND DAY OF JULY, A.D. 1994 BY ROBERT GLEASON, PRESIDENT AND PETER D. DORAGH, ASST. SECRETARY OF ROTTUND HOMES OF FLORIDA, INC., A MINNESOTA CORPORATION, ON BEHALF OF THE CORPORATION. THEY ARE PERSONALLY KNOWN TO ME OR HAVE PRODUCED _____ AS IDENTIFICATION.



MY COMMISSION EXPIRES: _____

NOTARY PUBLIC, STATE OF FLORIDA

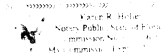
PRINTED NAME: _____

SERIAL NUMBER (IF ANY): _____

ACKNOWLEDGEMENT:

STATE OF FLORIDA
COUNTY OF LEE

THE FOREGOING INSTRUMENT WAS ACKNOWLEDGED BEFORE ME THIS 22ND DAY OF JULY, A.D. 1994 BY G. RUSSELL WEYER, VICE PRESIDENT AND PETER D. DORAGH, ASST. SECRETARY OF GATEWAY GOLF MANAGEMENT CORPORATION, A FLORIDA CORPORATION, ON BEHALF OF THE CORPORATION. THEY ARE PERSONALLY KNOWN TO ME OR HAVE PRODUCED _____ AS IDENTIFICATION.



MY COMMISSION EXPIRES: _____

NOTARY PUBLIC, STATE OF FLORIDA

PRINTED NAME: _____

SERIAL NUMBER (IF ANY): _____

GATEWAY SERVICES DISTRICT:

THE DISTRICT HEREBY ACKNOWLEDGES ACCEPTANCE OF EASEMENTS DEDICATED ON THIS PLAT AND DRAINAGE OF ALL LANDS CONTAINED WITHIN THIS PLAT.

WITNESSES AS TO BOTH

NAME: _____
PRINTED NAME: _____

DOUGLAS G. BROWN, PRESIDENT
GATEWAY SERVICES DISTRICT

NAME: _____
PRINTED NAME: _____

CRAIG P. KENAN, SECRETARY
GATEWAY SERVICES DISTRICT

NAME: _____
PRINTED NAME: _____

ACKNOWLEDGEMENT:

STATE OF FLORIDA
COUNTY OF LEE

THE FOREGOING INSTRUMENT WAS ACKNOWLEDGED BEFORE ME THIS 22ND DAY OF JULY, A.D. 1994 BY DOUGLAS G. BROWN, PRESIDENT AND CRAIG P. KENAN, SECRETARY OF THE GATEWAY SERVICES DISTRICT, ON BEHALF OF SAID DISTRICT. THEY ARE PERSONALLY KNOWN TO ME OR HAVE PRODUCED _____ AS IDENTIFICATION.

NOTARY PUBLIC, STATE OF FLORIDA

MY COMMISSION EXPIRES: _____

PRINTED NAME: _____

SERIAL NUMBER (IF ANY): _____

D.O. #93-12-009.00D

SEAL	SEAL	SEAL	NOTARY	NOTARY	NOTARY	NOTARY
GC	RH	GGMC	GCI	RH	GGMC	GSD

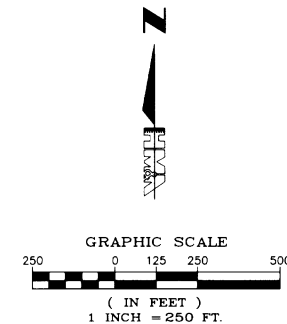
THIS INSTRUMENT WAS PREPARED BY

HMA HOLE, MONTES & ASSOCIATES
ENGINEERS - PLANNERS - SURVEYORS
NAPLES - FORT MYERS - BONITA SPRINGS
6202F PRESIDENTIAL COURT, FORT MYERS, FLORIDA (813) 481-7874

REFERENCE NO. 9369PCS

DRAWN BY R.W.C.

SHEET 3 of 12

[illegible]

DRAWN BY	R.W.C.
----------	--------

5/19/94

SHEET 4 of 12

GATEWAY PHASE 18

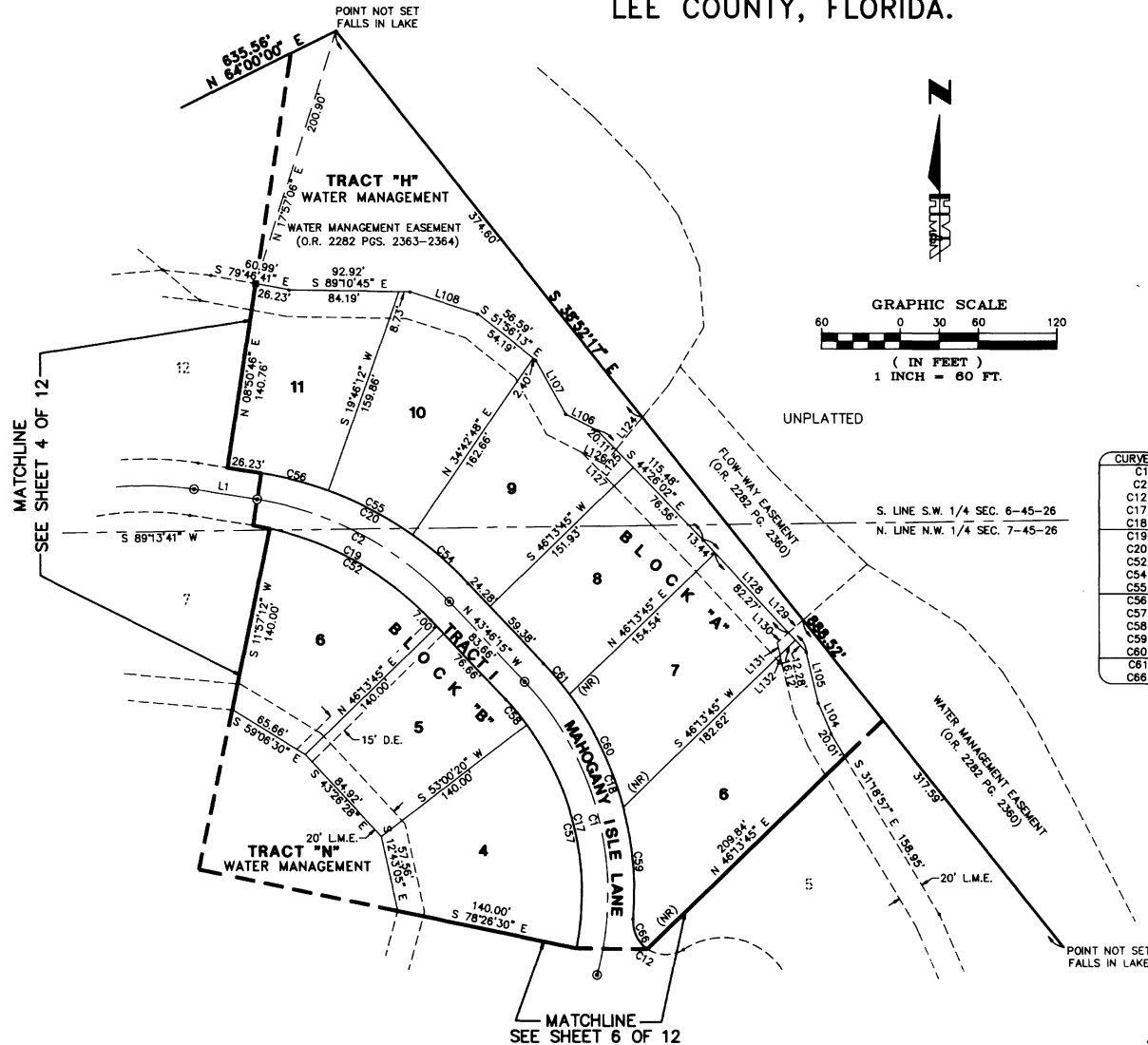
A SUBDIVISION LOCATED IN

SECTIONS 6 & 7, TOWNSHIP 45 SOUTH, RANGE 26 EAST &
SECTIONS 1 & 12, TOWNSHIP 45 SOUTH, RANGE 25 EAST
LEE COUNTY, FLORIDA.

PLAT BOOK 55 PAGE 65

SHEET 5 of 12

D.O. #93-12-009.000



LINE	DIRECTION	DISTANCE
L1	N 81°09'14" W	49.13'
L104	N 23°29'50" W	25.27'
L105	N 13°20'55" W	39.98'
L106	S 63°14'30" E	27.42'
L107	S 29°17'42" E	47.01'
L108	S 72°20'20" E	54.47'
L124	N 39°30'54" E	31.85'
L125	N 39°30'54" E	13.86'
L126	S 63°14'30" E	19.29'
L127	N 44°26'02" W	35.37'
L128	S 43°05'57" E	115.73'
L129	N 49°23'47" E	14.91'
L130	N 49°23'47" E	11.32'
L131	N 13°20'55" W	9.70'
L132	N 13°20'55" W	7.81'

CURVE	RADIUS	LENGTH	CHORD	BEARING	DELTA
C1	230.00'	238.51'	227.96'	N 14°03'49" W	59°24'53"
C2	260.00'	169.64'	166.65'	N 62°27'45" W	37°22'59"
C12	25.00'	55.70'	44.87'	S 59°14'46" E	127°38'49"
C17	210.00'	217.77'	208.14'	N 14°03'49" W	59°24'53"
C18	250.00'	210.96'	204.76'	N 19°35'48" W	48°20'54"
C19	240.00'	156.59'	153.83'	N 62°27'45" W	37°22'59"
C20	280.00'	182.69'	179.46'	N 62°27'45" W	37°22'59"
C52	240.00'	143.57'	141.44'	N 60°54'31" W	34°16'32"
C54	280.00'	56.28'	56.18'	N 49°31'43" W	11°30'56"
C55	280.00'	73.03'	72.82'	N 62°45'30" W	14°56'36"
C56	280.00'	53.38'	53.30'	N 75°41'51" W	10°55'26"
C57	210.00'	177.95'	172.68'	N 12°43'05" W	48°33'09"
C58	210.00'	24.84'	24.82'	N 40°22'57" W	06°46'36"
C59	250.00'	85.09'	84.68'	N 05°10'25" W	19°30'07"
C60	250.00'	95.17'	94.60'	N 25°49'51" W	21°48'44"
C61	250.00'	30.69'	30.67'	N 40°15'14" W	07°02'03"
C66	25.00'	26.27'	25.08'	S 25°31'26" E	60°12'09"

THIS INSTRUMENT WAS PREPARED BY

HMA HOLE, MONTES & ASSOCIATES
ENGINEERS - PLANNERS - SURVEYORS
NAPLES - FORT MYERS - BONITA SPRINGS
10550 ABERNATHY STREET, BONITA SPRINGS, FLORIDA (813) 992-0795

REFERENCE NO. 9369PS2

DRAWN BY

R.W.C.

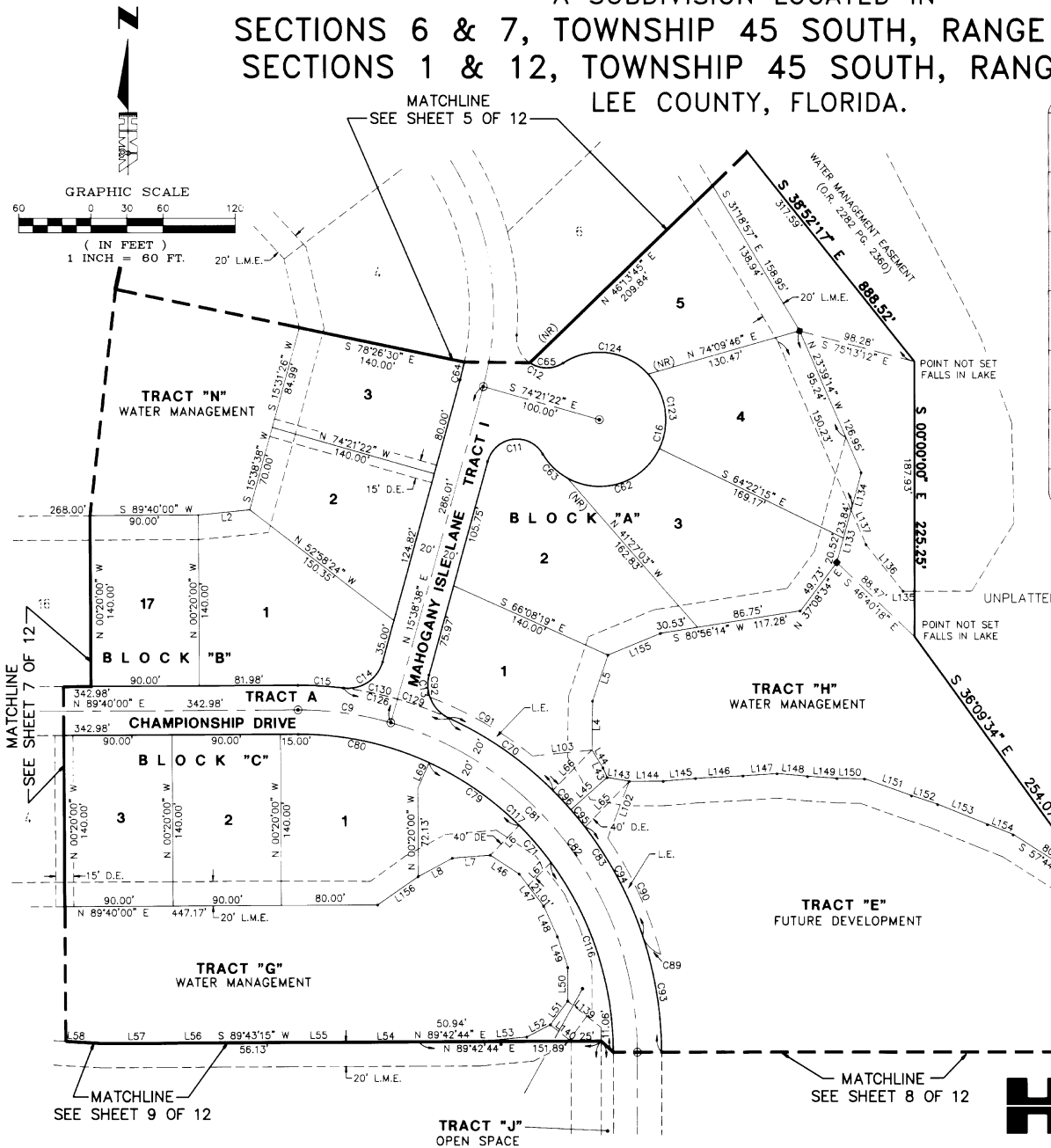
GATEWAY PHASE 18

A SUBDIVISION LOCATED IN

SECTIONS 6 & 7, TOWNSHIP 45 SOUTH, RANGE 26 EAST &
SECTIONS 1 & 12, TOWNSHIP 45 SOUTH, RANGE 25 EAST
LEE COUNTY, FLORIDA.

PLAT BOOK 55 PAGE 66

SHEET 6 of 12



CURVE	RADIUS	LENGTH	CHORD	BEARING	DELTA
C9	280.00'	78.08'	77.83'	N 82°20'41" W	15°58'38"
C11	25.00'	58.22'	45.93'	S 82°21'37" W	133°25'57"
C12	25.00'	55.70'	44.87'	S 59°14'46" E	127°38'49"
C13	30.00'	42.56'	39.08'	S 24°59'55" E	81°17'07"
C14	30.00'	42.56'	39.08'	N 56°17'11" W	81°17'07"
C15	300.00'	38.03'	38.00'	N 86°42'08" W	07°15'46"
C16	55.00'	261.24'	76.31'	N 13°00'12" E	272°08'46"
C62	55.00'	89.83'	80.17'	N 72°25'01" E	93°34'31"
C63	55.00'	28.67'	28.35'	S 45°51'34" E	29°52'19"
C64	210.00'	14.97'	14.97'	N 13°36'04" E	04°05'08"
C65	75.00'	29.43'	27.76'	S 89°20'50" E	6°26'41"
C70	300.00'	105.03'	104.50'	N 55°36'41" W	20°03'36"
C71	260.00'	40.16'	40.12'	N 41°09'23" W	08°51'00"
C79	260.00'	91.03'	90.56'	N 55°36'41" W	20°03'36"
C80	260.00'	112.05'	111.18'	N 77°59'15" W	24°41'32"
C81	280.00'	441.06'	396.85'	N 45°12'24" W	90°15'12"
C82	280.00'	362.98'	338.09'	N 37°13'05" W	74°16'34"
C83	300.00'	34.328'	32.485'	N 32°51'39" W	65°33'41"
C89	25.00'	22.40'	21.66'	N 44°17'18" E	51°20'46"
C90	310.00'	105.51'	105.00'	S 24°45'17" W	19°30'02"
C91	310.00'	98.41'	98.00'	N 60°33'12" W	18°11'21"
C92	30.00'	18.36'	18.08'	S 01°53'23" E	35°04'03"
C93	300.00'	97.05'	96.63'	N 09°20'52" W	18°32'07"
C94	300.00'	101.08'	100.60'	N 28°16'02" W	19°18'14"
C95	300.00'	18.36'	18.36'	N 39°40'21" W	03°30'23"
C96	300.00'	21.76'	21.76'	N 43°30'13" W	04°09'21"
C116	260.00'	166.32'	163.50'	S 18°24'21" E	36°39'06"
C117	260.00'	409.56'	368.51'	S 45°12'24" E	90°15'12"
C123	55.00'	65.54'	61.73'	N 08°30'38" W	68°16'46"
C124	55.00'	77.20'	71.01'	N 82°51'36" W	80°25'10"
C126	300.00'	91.26'	90.91'	N 74°21'22" W	17°28'46"
C129	300.00'	45.63'	45.59'	N 69°59'55" W	08°42'53"
C130	300.00'	45.63'	45.59'	N 78°42'49" W	08°42'53"

LINE	DIRECTION	DISTANCE
L2	S 84°20'25" W	42.86'
L4	N 00°51'51" E	40.13'
L5	N 18°40'21" E	39.87'
L6	N 44°25'07" E	34.19'
L7	N 85°32'10" E	31.67'
L8	N 61°55'09" E	32.11'
L43	N 23°18'51" W	8.45'
L44	N 32°32'42" W	17.27'
L45	N 48°34'28" E	40.09'
L46	S 57°07'17" E	28.61'
L47	S 37°39'34" E	33.09'
L48	S 24°26'57" E	27.46'
L49	S 18°56'52" E	26.67'
L50	S 00°05'58" W	27.40'
L51	S 36°45'54" W	24.15'
L52	S 62°51'17" W	22.02'
L53	S 84°41'14" W	39.35'
L54	S 89°37'33" W	52.66'
L55	S 89°39'07" W	56.24'
L56	S 89°36'31" W	44.16'
L57	S 89°41'57" W	53.73'
L58	N 86°43'59" W	40.26'
L65	S 44°25'07" W	52.55'
L66	S 44°25'07" W	46.29'
L67	N 44°25'07" E	27.03'

LINE	DIRECTION	DISTANCE
L69	N 24°21'31" E	23.08'
L102	N 21°13'39" E	49.66'
L103	N 84°21'00" E	49.45'
L133	N 15°26'38" E	44.36'
L134	N 15°26'38" E	31.71'
L135	S 89°53'05" W	9.54'
L136	N 38°57'14" W	48.68'
L137	N 23°39'14" W	30.90'
L139	S 52°13'31" W	35.05'
L140	N 52°13'31" W	21.73'
L143	S 80°23'54" E	18.70'
L144	N 80°37'46" E	28.46'
L145	N 84°58'01" E	26.78'
L146	N 87°01'56" E	39.62'
L147	N 86°12'24" E	28.18'
L148	S 84°56'17" E	25.42'
L149	S 86°10'38" E	24.37'
L150	S 89°01'40" E	22.82'
L151	S 70°35'31" E	41.21'
L152	S 71°50'09" E	22.74'
L153	S 68°14'06" E	44.39'
L154	S 68°40'56" E	22.83'
L155	N 67°46'05" E	47.52'
L156	S 55°25'00" W	41.10'

THIS INSTRUMENT WAS PREPARED BY

HMA HOLE, MONTES & ASSOCIATES
ENGINEERS - PLANNERS - SURVEYORS
NAPLES - FORT MYERS - BONITA SPRINGS
10550 ABERNATHY STREET, BONITA SPRINGS, FLORIDA (813) 992-0795

REFERENCE NO. 9369PS3

DRAWN BY R.W.C.

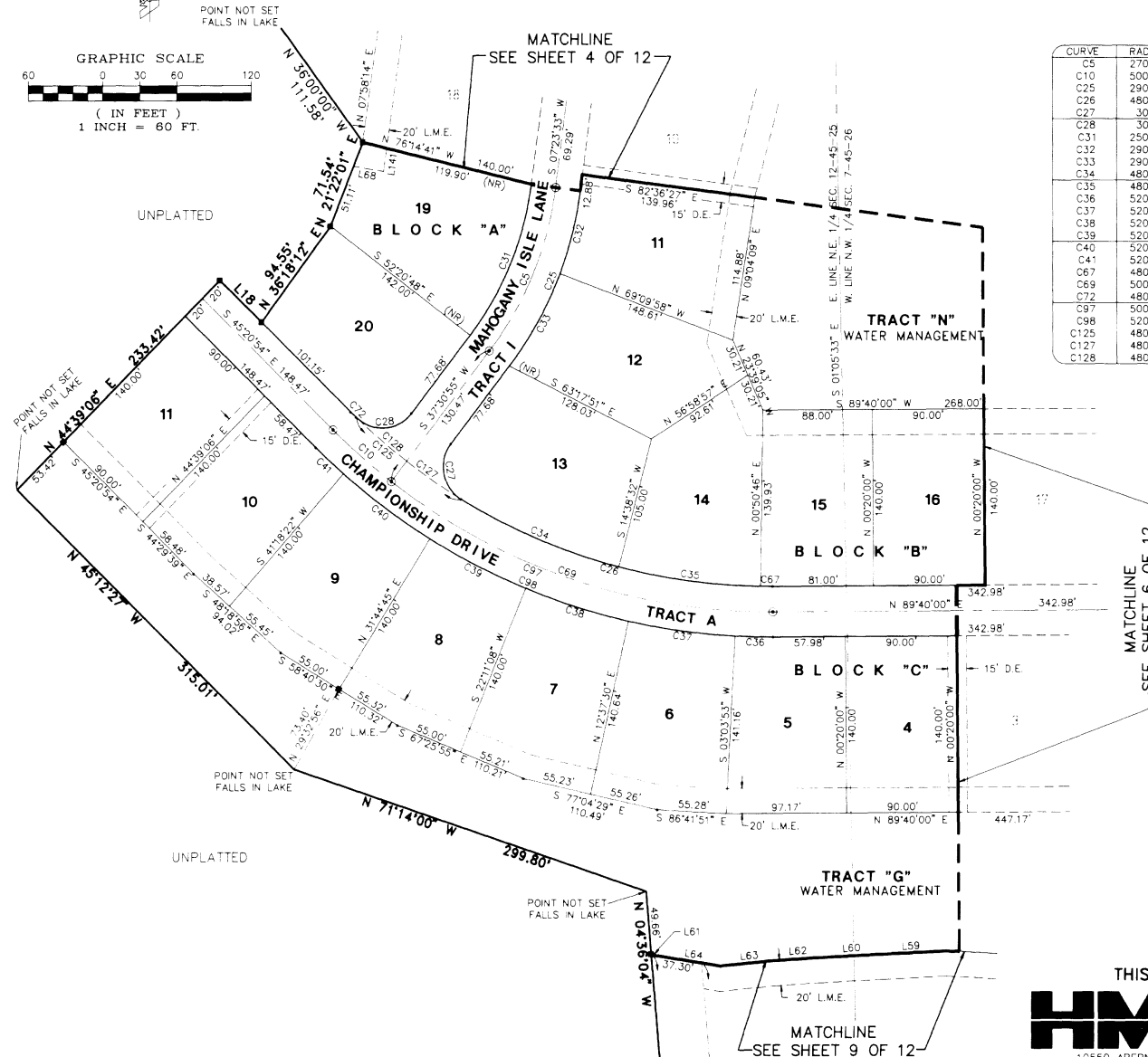
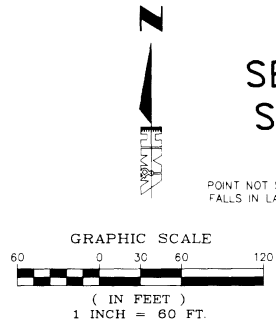
D.O. #93-12-009.000

GATEWAY PHASE 18

A SUBDIVISION LOCATED IN

SECTIONS 6 & 7, TOWNSHIP 45 SOUTH, RANGE 26 EAST &
SECTIONS 1 & 12, TOWNSHIP 45 SOUTH, RANGE 25 EAST
LEE COUNTY, FLORIDA.

PLAT BOOK 53 PAGE 67
SHEET 7 of 12



CURVE	RADIUS	LENGTH	CHORD	BEARING	DELTA
C10	270.00'	141.95'	140.32'	N 22°27'14" E	30°07'21"
C15	500.00'	62.28'	62.24'	S 48°55'00" E	07°08'12"
C25	290.00'	152.46'	150.71'	N 22°27'14" E	30°07'21"
C26	480.00'	263.63'	260.33'	S 74°35'56" E	31°28'09"
C27	30.00'	50.46'	44.72'	S 10°40'29" E	96°22'45"
C28	30.00'	50.46'	44.72'	N 85°42'17" E	96°22'46"
C31	250.00'	131.43'	129.93'	N 22°27'14" E	30°07'21"
C32	290.00'	68.03'	67.88'	N 14°06'48" E	13°26'29"
C33	290.00'	84.43'	84.13'	N 29°10'28" E	16°40'52"
C34	480.00'	138.18'	137.70'	S 67°06'40" E	16°29'37"
C35	480.00'	115.58'	115.30'	S 82°15'21" E	13°47'46"
C36	520.00'	30.84'	30.83'	S 88°38'04" E	03°23'53"
C37	520.00'	86.77'	86.67'	S 82°09'19" E	09°33'37"
C38	520.00'	86.77'	86.67'	S 72°35'41" E	09°33'38"
C39	520.00'	86.77'	86.67'	S 63°02'04" E	09°33'37"
C40	520.00'	86.77'	86.67'	S 53°28'27" E	09°33'37"
C41	520.00'	30.36'	30.36'	S 47°01'16" E	03°20'44"
C67	480.00'	9.88'	9.88'	S 89°44'37" E	01°10'46"
C69	500.00'	330.29'	324.32'	S 71°24'33" E	37°50'54"
C72	480.00'	6.34'	6.34'	S 45°43'37" E	00°45'26"
C97	500.00'	392.57'	382.56'	S 67°50'27" E	44°59'06"
C98	520.00'	408.27'	397.87'	S 67°50'27" E	44°59'06"
C125	480.00'	106.89'	106.67'	S 82°29'05" E	12°45'31"
C127	480.00'	53.44'	53.42'	S 55°40'28" E	06°22'46"
C128	480.00'	53.44'	53.42'	S 49°17'43" E	06°22'46"

LINE	DIRECTION	DISTANCE
L18	S 45°20'54" E	47.32'
L59	S 87°12'32" W	53.41'
L60	S 86°52'13" W	49.08'
L61	N 73°50'28" W	4.02'
L62	S 86°14'34" W	37.48'
L63	S 84°27'40" W	42.82'
L64	N 80°55'19" W	52.56'
L68	N 80°22'19" W	24.74'
L141	S 07°58'14" W	18.56'

D.O. #93-12-009.000

THIS INSTRUMENT WAS PREPARED BY
HMA HOLE, MONTES & ASSOCIATES
ENGINEERS - PLANNERS - SURVEYORS
NAPLES - FORT MYERS - BONITA SPRINGS
10550 ABERNATHY STREET, BONITA SPRINGS, FLORIDA (813) 992-0795
REFERENCE NO. 9369P54 DRAWN BY R.W.C.

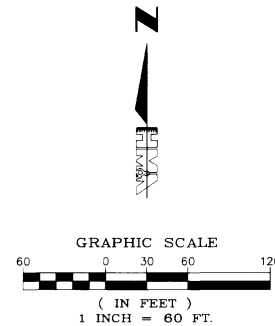
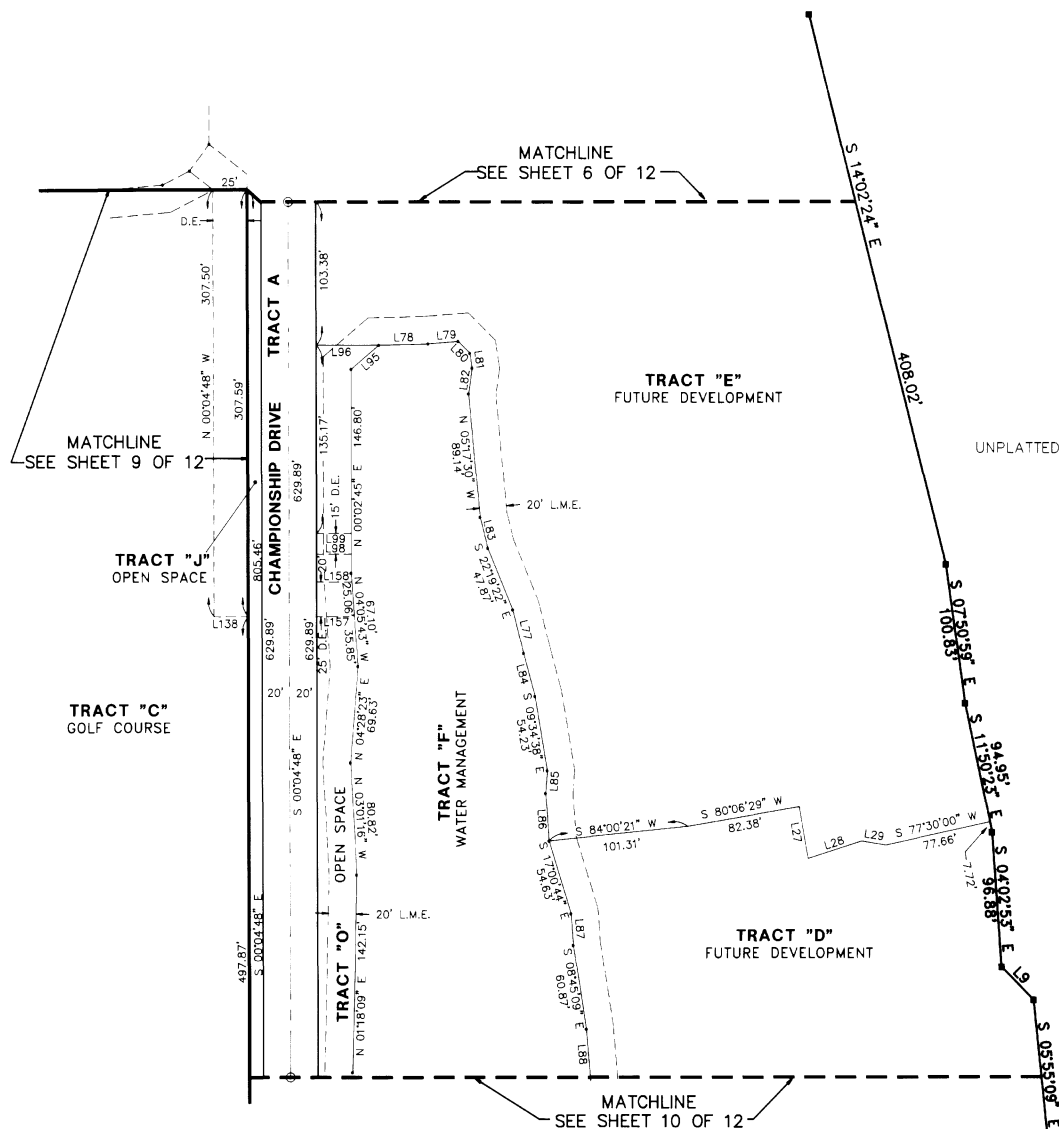
GATEWAY PHASE 18

A SUBDIVISION LOCATED IN

SECTIONS 6 & 7, TOWNSHIP 45 SOUTH, RANGE 26 EAST &
SECTIONS 1 & 12, TOWNSHIP 45 SOUTH, RANGE 25 EAST
LEE COUNTY, FLORIDA.

PLAT BOOK 53 PAGE 68
SHEET 8 of 12

D.O. #93-12-009.000



LINE	DIRECTION	DISTANCE
L19	S 44°14'11" E	32.86'
L27	N 09°53'31" W	37.99'
L28	S 72°00'00" W	40.96'
L29	N 80°47'42" W	17.90'
L77	S 13°59'09" E	32.12'
L78	N 88°32'17" E	36.02'
L79	N 85°23'16" E	22.08'
L80	S 45°07'08" E	12.08'
L81	S 08°45'22" E	10.72'
L82	S 07°57'43" W	18.72'
L83	S 13°58'50" E	23.04'
L84	S 14°55'13" E	32.08'
L85	S 04°39'29" W	16.36'
L86	S 04°01'54" E	34.43'
L87	S 04°15'40" E	22.70'
L88	S 04°39'31" E	37.30'
L95	N 49°28'22" E	26.58'
L96	N 89°51'31" E	45.75'
L98	S 89°55'15" W	25.25'
L99	S 89°55'15" W	25.33'
L138	N 89°55'12" E	25.00'
L157	S 89°55'12" W	27.38'
L158	S 89°55'12" W	25.63'

THIS INSTRUMENT WAS PREPARED BY

HMA HOLE, MONTES & ASSOCIATES
ENGINEERS - PLANNERS - SURVEYORS
NAPLES - FORT MYERS - BONITA SPRINGS
10550 ABERNATHY STREET, BONITA SPRINGS, FLORIDA (813) 992-0795

REFERENCE NO. 9369PS5

DRAWN BY R.W.C.

GATEWAY PHASE 18

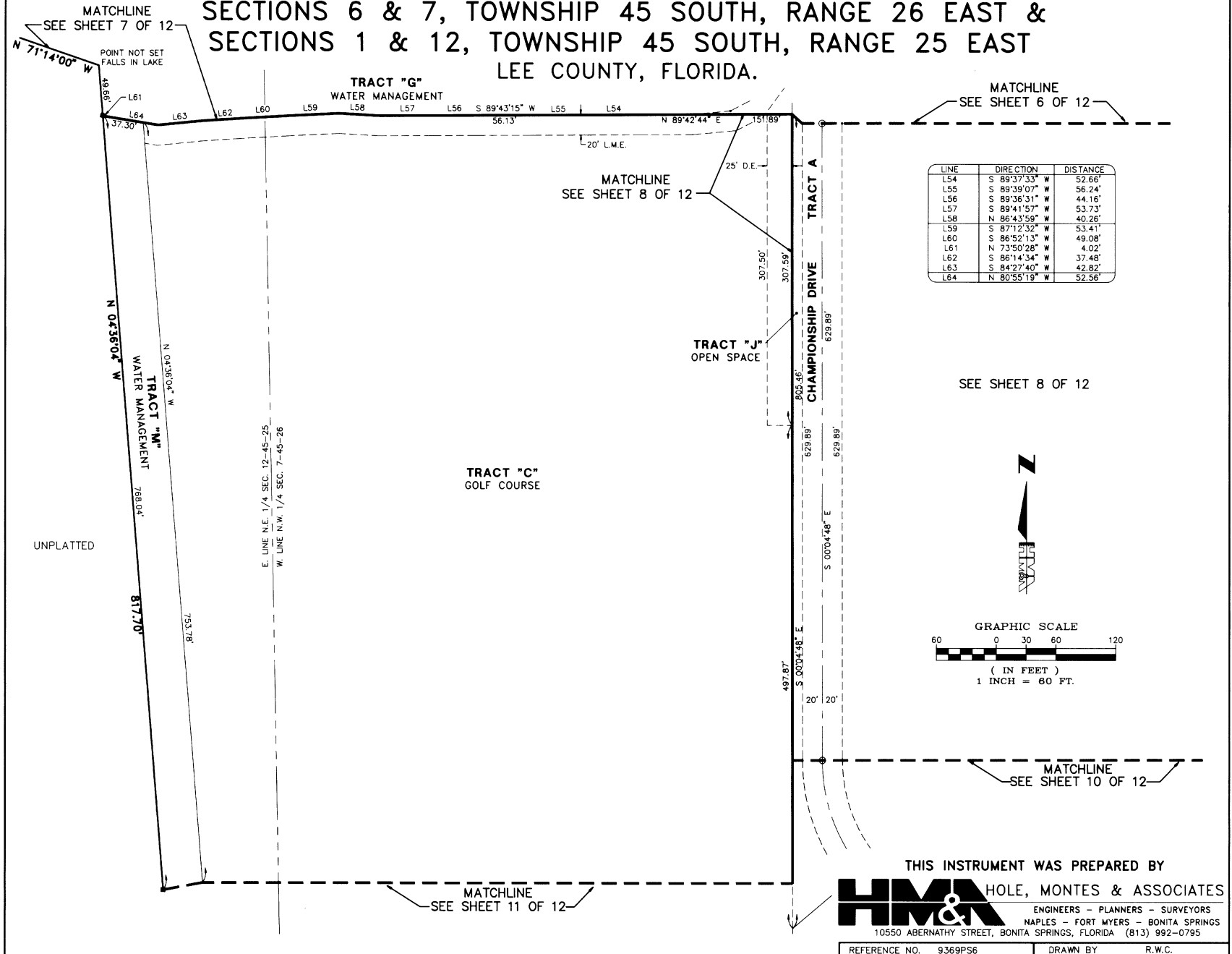
A SUBDIVISION LOCATED IN

SECTIONS 6 & 7, TOWNSHIP 45 SOUTH, RANGE 26 EAST &
SECTIONS 1 & 12, TOWNSHIP 45 SOUTH, RANGE 25 EAST
LEE COUNTY, FLORIDA.

PLAT BOOK 55 PAGE 69

SHEET 9 of 12

D.O. #93-12-009.000



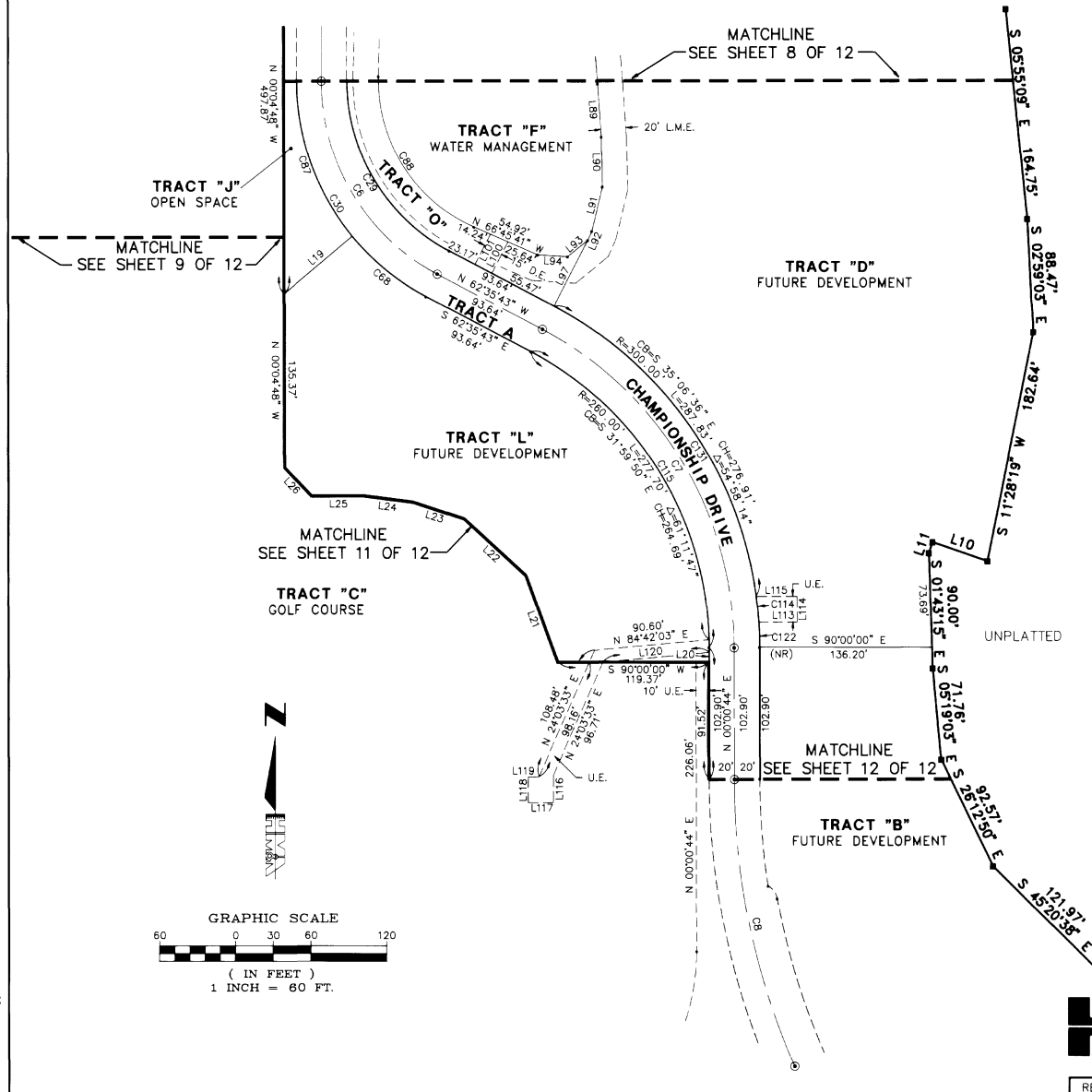
GATEWAY PHASE 18

A SUBDIVISION LOCATED IN

SECTIONS 6 & 7, TOWNSHIP 45 SOUTH, RANGE 26 EAST &
SECTIONS 1 & 12, TOWNSHIP 45 SOUTH, RANGE 25 EAST
LEE COUNTY, FLORIDA.

PLAT BOOK 55 PAGE 70

SHEET 10 of 12



LINE	DIRECTION	DISTANCE
L10	N 71°09'36" W	45.78'
L11	S 18°50'24" W	9.00'
L19	N 50°08'17" E	70.25'
L20	S 00°00'44" W	7.75'
L21	N 20°16'48" W	72.28'
L22	N 47°58'04" W	65.72'
L23	S 71°57'34" E	42.37'
L24	S 82°45'53" E	37.97'
L25	N 89°58'12" E	43.11'
L26	N 43°50'27" W	30.72'
L89	S 04°04'15" E	41.66'
L90	S 01°11'26" E	39.07'
L91	S 13°47'39" W	35.62'
L92	S 24°09'03" W	7.78'
L93	S 51°08'52" W	20.49'
L94	N 86°30'20" W	23.68'
L97	N 27°24'17" E	58.00'
L100	S 27°24'17" W	27.78'
L101	S 27°24'17" W	26.69'
L113	N 90°00'00" W	30.66'
L114	S 00°00'00" W	20.00'
L115	N 90°00'00" W	32.66'
L116	S 00°00'00" E	21.33'
L117	N 90°00'00" W	20.00'
L118	N 00°00'00" E	20.00'
L119	S 90°00'00" E	8.45'
L120	N 84°42'03" E	83.91'

CURVE	RADIUS	LENGTH	CHORD	BEARING	DELTA
C6	170.00'	185.49'	176.42'	S 31°20'16" E	62°30'55"
C7	280.00'	305.96'	290.96'	N 31°17'30" W	62°36'27"
C8	550.00'	230.50'	228.82'	S 11°59'38" E	24°00'44"
C29	150.00'	163.66'	155.67'	S 31°20'16" E	62°30'55"
C30	190.00'	207.31'	197.18'	S 31°20'16" E	62°30'55"
C88	190.00'	75.39'	74.89'	S 51°13'43" E	22°44'00"
C87	190.00'	131.92'	129.29'	S 19°58'16" E	39°46'55"
C88	125.00'	148.49'	139.91'	S 32°43'46" E	68°03'50"
C114	300.00'	20.10'	20.10'	N 05°42'18" W	03°50'22"
C115	260.00'	284.10'	270.18'	N 31°17'30" W	62°36'27"
C122	300.00'	19.88'	19.88'	N 01°53'12" W	03°47'51"
C131	300.00'	287.63'	276.91'	N 35°06'36" W	54°58'14"

THIS INSTRUMENT WAS PREPARED BY

HMA HOLE, MONTES & ASSOCIATES
ENGINEERS - PLANNERS - SURVEYORS
NAPLES - FORT MYERS - BONITA SPRINGS
10550 ABERNATHY STREET, BONITA SPRINGS, FLORIDA (813) 992-0795

REFERENCE NO. 9369PS7

DRAWN BY R.W.C.

D.O. #93-12-009.00D

GATEWAY PHASE 18

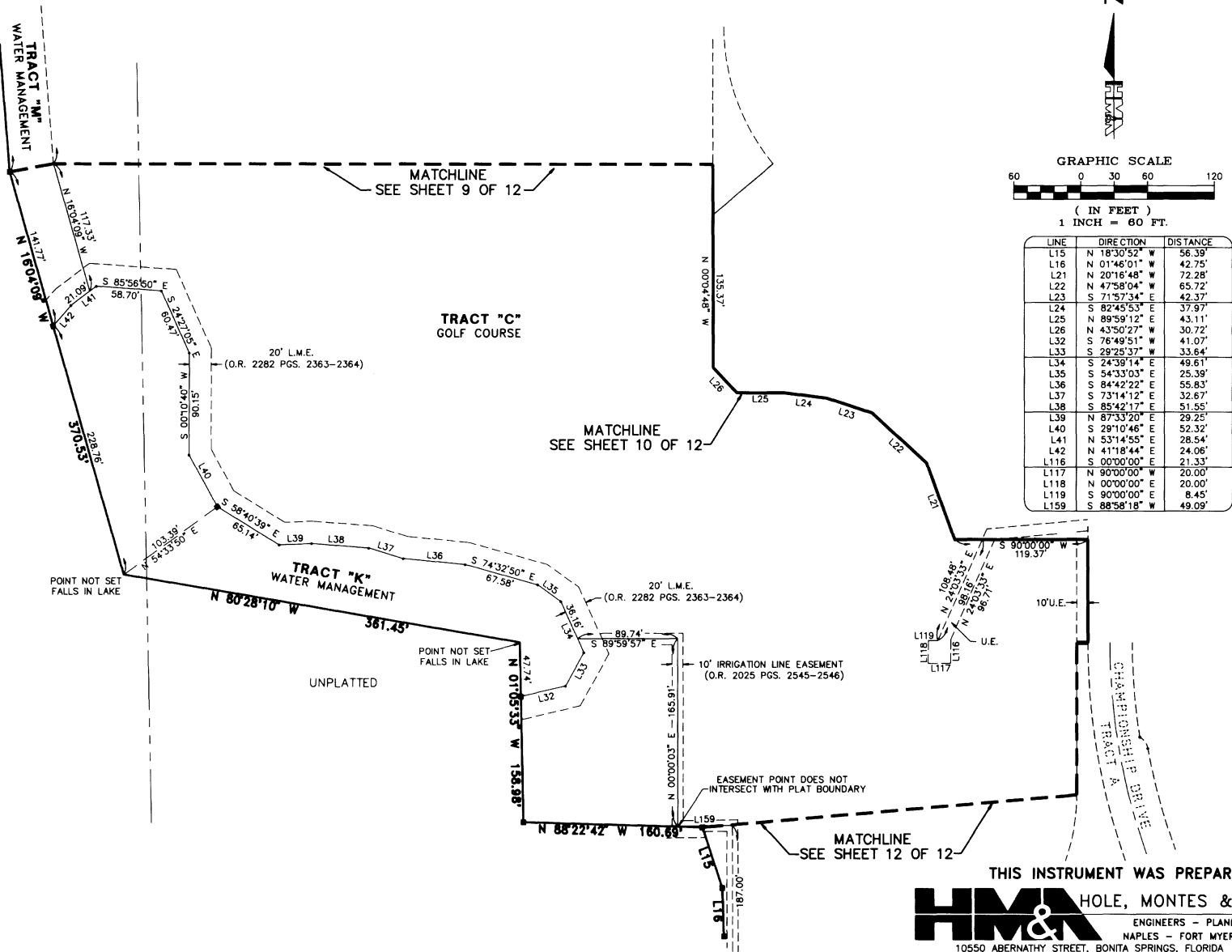
A SUBDIVISION LOCATED IN

SECTIONS 6 & 7, TOWNSHIP 45 SOUTH, RANGE 26 EAST &
SECTIONS 1 & 12, TOWNSHIP 45 SOUTH, RANGE 25 EAST
LEE COUNTY, FLORIDA.

PLAT BOOK 53 PAGE 71

SHEET 11 of 12

D.O. #93-12-009.00D



THIS INSTRUMENT WAS PREPARED BY

HMA HOLE, MONTES & ASSOCIATES
ENGINEERS - PLANNERS - SURVEYORS
NAPLES - FORT MYERS - BONITA SPRINGS
10550 ABERNATHY STREET, BONITA SPRINGS, FLORIDA (813) 992-0795

REFERENCE NO. 9369PS8

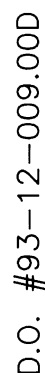
DRAWN BY

R.W.C.

PLAT BOOK	55	PAGE	72
SHEET	12	of	12

CURVE	RADIUS	LENGTH	CHORD	BEARING	DELTA
C68	550.0'	230.50'	228.82'	S 11°59'38" E	24°00'44"
C74	14.00'	12.71'	12.28'	N 36°15'54" W	52°01'18"
C75	570.00'	238.88'	237.14'	S 11°59'38" E	24°00'44"
C76	530.00'	83.93'	83.86'	S 04°31'27" E	09°04'22"
C77	330.00'	49.65'	49.63'	N 33°36'21" E	28°33'01"
C78	25.08'	43.45'	38.19'	N 73°47'50" E	99°35'01"
C84	535.00'	197.38'	196.26'	S 66°18'47" W	21°08'17"
C85	561.00'	169.99'	169.34'	S 65°05'49" W	17°21'35"
C86	561.00'	14.98'	14.98'	S 73°00'45" W	01°31'44"
C99	524.50'	125.84'	125.54'	N 17°03'51" E	46°30'00"
C100	535.00'	189.63'	188.63'	S 66°43'36" W	20°18'38"
C101	30.00'	52.06'	45.77'	S 73°42'52" E	09°25'44"
C102	20.00'	31.14'	28.19'	N 62°53'41" W	89°12'38"
C103	115.00'	119.16'	113.90'	S 77°49'01" E	59°21'55"
C104	20.00'	33.68'	28.84'	N 24°15'00" E	46°30'00"
C105	85.00'	41.92'	41.03'	S 87°59'59" W	90°00'00"
C106	170.00'	159.55'	152.55'	N 26°53'54" E	53°46'20"
C107	111.15'	95.45'	92.54'	S 29°10'59" W	49°17'15"
C108	230.00'	143.06'	140.76'	N 35°57'56" E	35°38'16"
C109	88.85'	76.30'	73.98'	S 29°10'59" W	49°17'15"
C110	230.00'	26.81'	26.80'	N 50°26'42" E	06°40'45"
C111	250.00'	116.25'	115.55'	N 32°31'51" E	28°33'01"
C112	570.00'	210.90'	209.70'	S 10°35'16" E	21°12'00"
C113	570.00'	27.98'	27.97'	S 22°35'38" E	02°48'44"
C118	30.00'	32.47'	30.91'	N 55°03'45" E	62°00'47"
C119	465.00'	189.67'	188.36'	N 82°53'48" E	23°22'13"
C120	465.00'	62.74'	62.72'	S 72°27'58" E	28°33'01"
C121	465.00'	62.74'	62.69'	N 59°36'34" E	07°43'55"

LINE	DIRECTION	DISTANCE
L12	N 13°27'40" W	28.00'
L13	N 10°54'46" W	28.00'
L14	N 60°20'08" E	40.93'
L15	N 18°30'52" W	56.39'
L16	N 01°46'01" W	42.75'
L17	N 01°33'09" E	55.07'
L30	N 11°39'46" E	66.26'
L31	N 21°34'17" W	67.07'
L70	N 67°39'43" E	15.38'
L71	N 36°18'18" E	29.93'
L72	N 17°45'08" W	10.22'
L73	N 33°35'01" W	10.22'
L74	N 72°00'55" W	21.79'
L75	S 66°00'00" W	11.27'
L76	S 36°18'38" W	30.39'
L109	N 71°42'38" E	10.00'
L110	S 72°30'00" W	18.71'
L111	N 66°00'00" E	10.00'
L112	N 72°30'00" E	26.52'
L142	S 85°20'00" W	49.04'
L159	S 88°58'16" W	49.04'



05/29/94

THIS INSTRUMENT WAS PREPARED BY

HMA & HOLE, MONTES & ASSOCIATES

ENGINEERS - PLANNERS - SURVEYORS
NAPLES - FORT MYERS - BONITA SPRINGS
10550 ABERNATHY STREET, BONITA SPRINGS, FLORIDA (813) 992-0795

REFERENCE NO.	936PSS	DRAWN BY	R.W.C.
---------------	--------	----------	--------