

33.00 R

OR2317 Pg1227

THIS INSTRUMENT PREPARED BY:
Steven I. Winer
Smoot Adams Johnson & Green, P.A.
Post Office Box 06259
Fort Myers, FL 33906-6259

3242276

THIRD AMENDMENT TO DECLARATION OF CONDOMINIUM
OF CHAMPIONS GREEN, A CONDOMINIUM

WHEREAS, the Declaration of Condominium of Champions Green, a Condominium, was recorded in O.R. Book 2285, commencing at Page 3348, and subsequently amended in O.R. Book 2310, commencing at Page 3535, and O. R. Book 2314, commencing at Page 2089, all in the Public Records of Lee County, Florida; and

WHEREAS, Champions Green Ltd., a Florida Limited Partnership, as Developer, has determined that Building 3 is substantially complete and the surveyor can now issue his Surveyor's Certificate.

NOW THEREFORE, the Developer amends the Declaration of Condominium of Champions Green, a Condominium, as follows:

- 1. Building 3 has been substantially completed together with all improvements appurtenant thereto, pursuant to the Surveyor's Certificate attached hereto as Exhibit "A".
- 2. The condominium plat of Exhibit "B" of the Declaration of Condominium shall be amended to read pursuant to Exhibit "B" attached hereto and made a part hereof.

IN ALL OTHER RESPECTS, the original Declaration, as amended, is hereby ratified and confirmed.

IN WITNESS WHEREOF, this Third Amendment to the Declaration of Condominium of Champions Green, a Condominium, has been executed by the Developer this 29th day of July, 1992.

WITNESSES:
Kimberly L. Ende
 Signature
Kimberly L. Ende
 Printed Name
Edward C. Wright
 Signature
Edward C. Wright
 Printed Name

CHAMPIONS GREEN, LTD., a Florida limited partnership
 By: Champions Green Development Company, a Florida corporation, its general partner
 By: Kirt A. Reinert, P.E.
Kirt A. Reinert, Vice-President
 Printed Name

STATE OF FLORIDA
COUNTY OF LEE

I HEREBY CERTIFY that on this day personally appeared before me, an officer duly authorized to administer oaths and take acknowledgments, KIRT A. REINERT, as Vice President of the General Partner, on behalf of said corporation as General Partner of CHAMPIONS GREEN, LTD., who executed the foregoing instrument and he acknowledged before me that he executed the same freely and voluntarily for the purposes therein expressed. He is personally known to me or has produced _____ as identification and did take an oath.

WITNESS my hand and official seal at Fort Myers, County of Lee and State of Florida, this 29th day of JULY, 1992.

My Commission Expires:
NOTARY PUBLIC STATE OF FLORIDA
MY COMMISSION EXP. JULY 7, 1995
~~BONDED THRU GENERAL INS. UNO.~~

Kelly E. Pokorny
Notary Public

(SEAL)

Kelly E. Pokorny
Printed Name

CC 125544
Commission Number

OR2317 Pg|228

SURVEYOR'S CERTIFICATE

OR2317 pg1229

I, Scott C. Whitaker, hereby certify that the construction of the improvements of BUILDING 3 - PHASE 1, CHAMPIONS GREEN, a Condominium, is substantially complete so that this material, together with the provisions of the Declaration describing the condominium property and specifically relating to matters of survey are an accurate representation of the improvements and so that the identification, location and dimensions of the common elements and of each unit and, where applicable, the limited common elements can be determined from these materials. I further certify that all planned improvements, including landscaping, utility services and access to the unit and common element facilities serving the condominium shown on the attached site plan dated July 27, 1992, have been substantially completed.

Bean, Whitaker, Lutz & Barnes, Inc.

By: Scott C. Whitaker
Registered Land Surveyor
State of Florida No. 4324

STATE OF FLORIDA
COUNTY OF LEE

The foregoing instrument was acknowledged before me this July 29, 1992, by Scott C. Whitaker who is personally known to me and who did not take an oath.

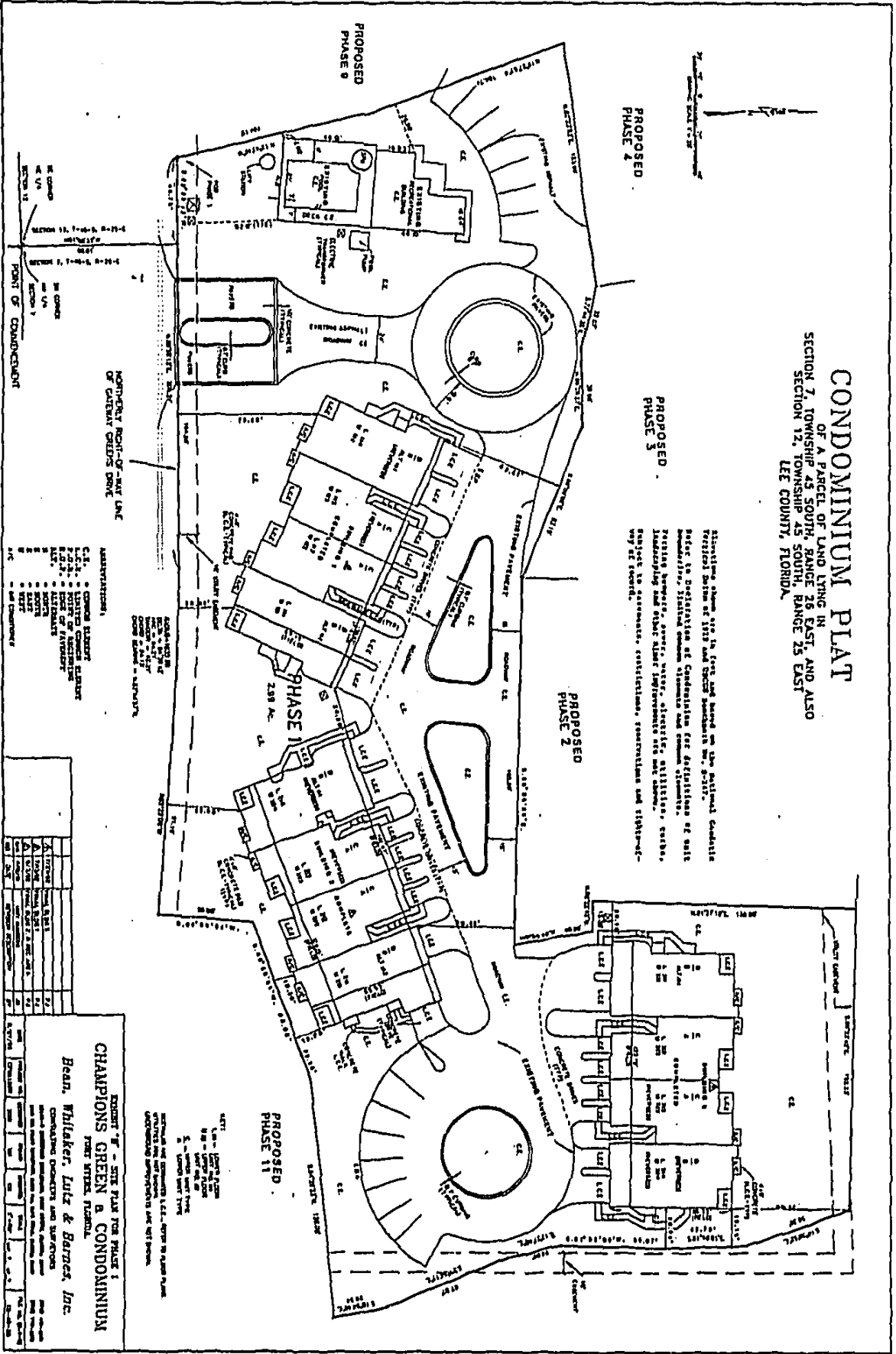
Anne J. Trautman
Notary Public
ANNE J. TRAUTMAN

My Commission Expires:

NOTARY PUBLIC STATE OF FLORIDA
MY COMMISSION EXP. AUG. 4, 1995
BONDED THROUGH GENERAL INS. UND.
64-CERT1

CONDOMINIUM PLAT
 OF A PARCEL OF LAND LYING IN
 SECTION 7, TOWNSHIP 45 SOUTH, RANGE 26 EAST, AND ALSO
 SECTION 12, TOWNSHIP 45 SOUTH, RANGE 26 EAST
 LEE COUNTY, FLORIDA.

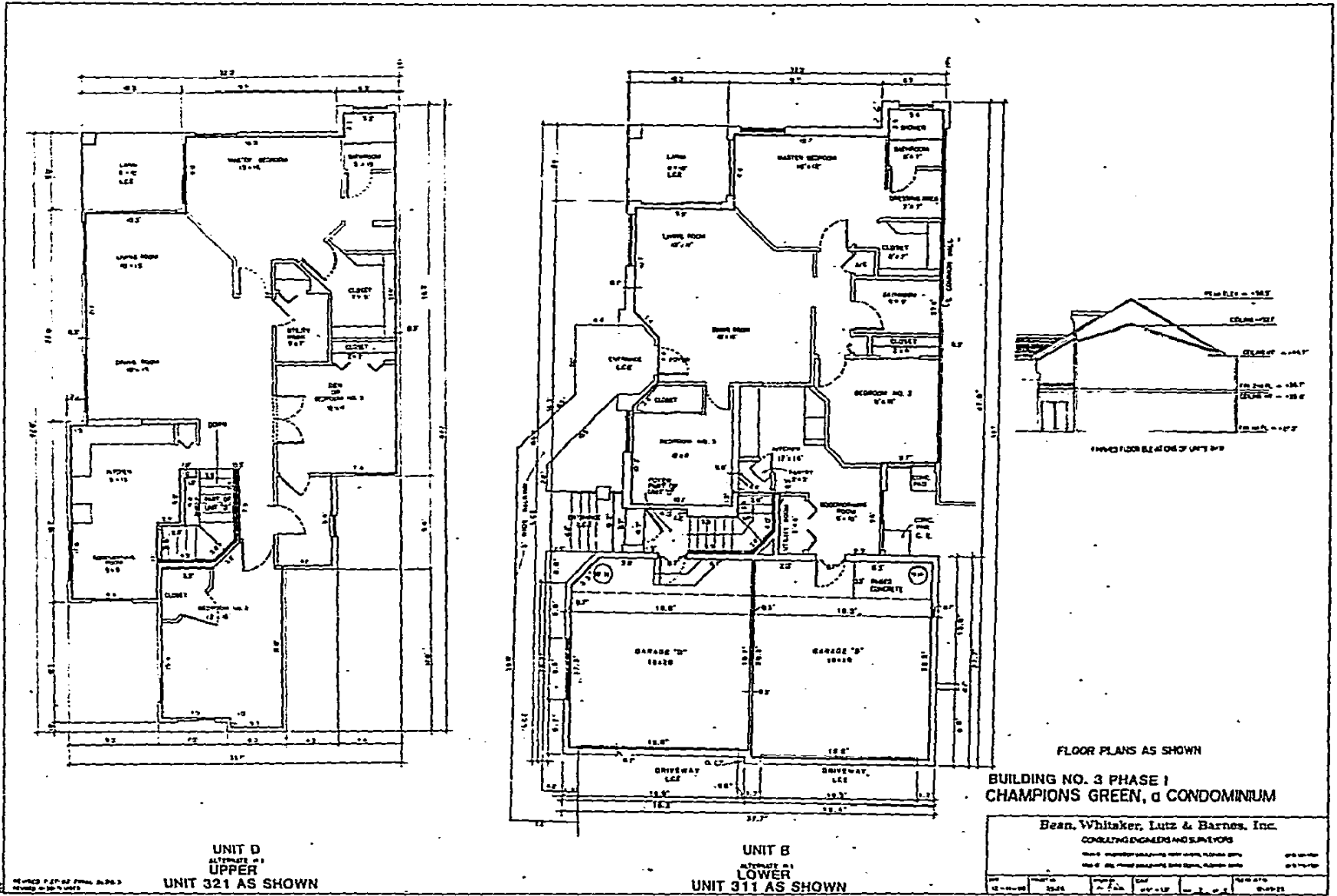
Showing shown are in feet and based on the national coordinate system of 1983 and State Plane NAD 83. All bearings refer to the meridian of the meridian for the purposes of this plat. Distances shown are in feet and rounded to the nearest foot. All distances are shown in feet and rounded to the nearest foot. All distances are shown in feet and rounded to the nearest foot. All distances are shown in feet and rounded to the nearest foot.



**EXHIBIT "E" - SITE PLAN FOR PHASE 1
 CHAMPIONS GREEN B CONDOMINIUM**
 FROM THE PLAT.

Bean, Whicker, Lutz & Barner Inc.
 CONSULTING ENGINEERS AND ARCHITECTS
 1000 W. 10TH AVENUE, SUITE 100
 TAMPA, FLORIDA 33606
 PREPARED FOR THE DEVELOPER
 DATE: 11/15/88

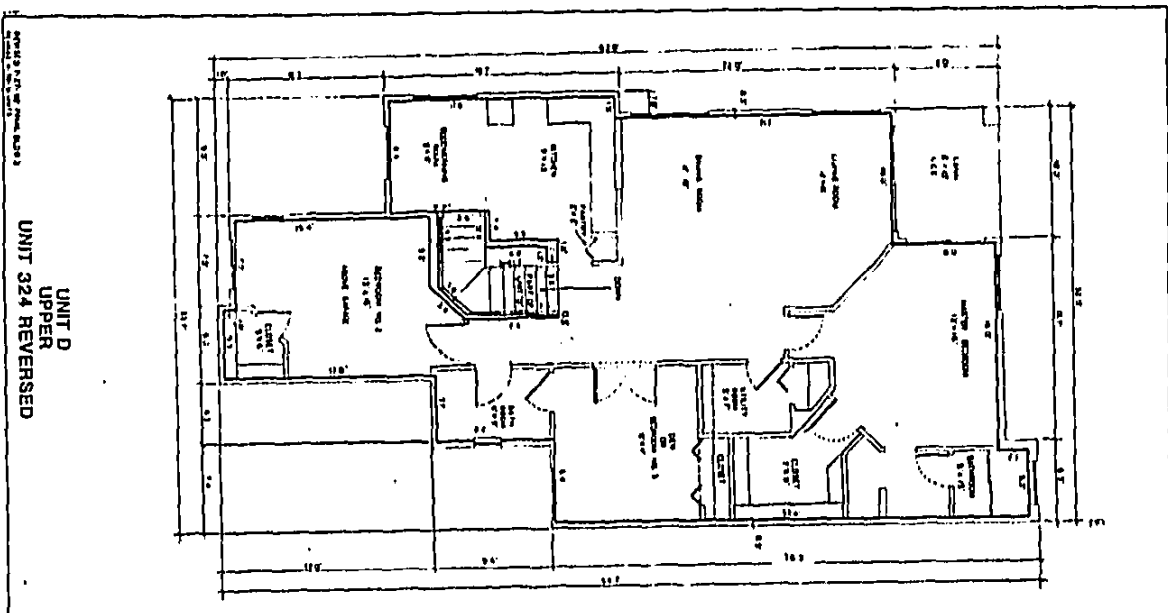
UNIT NO.	AREA (SQ. FT.)	TYPE	STATUS
101	1,200	CONDO	RESERVED
102	1,200	CONDO	RESERVED
103	1,200	CONDO	RESERVED
104	1,200	CONDO	RESERVED
105	1,200	CONDO	RESERVED
106	1,200	CONDO	RESERVED
107	1,200	CONDO	RESERVED
108	1,200	CONDO	RESERVED
109	1,200	CONDO	RESERVED
110	1,200	CONDO	RESERVED
111	1,200	CONDO	RESERVED
112	1,200	CONDO	RESERVED
113	1,200	CONDO	RESERVED
114	1,200	CONDO	RESERVED
115	1,200	CONDO	RESERVED
116	1,200	CONDO	RESERVED
117	1,200	CONDO	RESERVED
118	1,200	CONDO	RESERVED
119	1,200	CONDO	RESERVED
120	1,200	CONDO	RESERVED
121	1,200	CONDO	RESERVED
122	1,200	CONDO	RESERVED
123	1,200	CONDO	RESERVED
124	1,200	CONDO	RESERVED
125	1,200	CONDO	RESERVED
126	1,200	CONDO	RESERVED
127	1,200	CONDO	RESERVED
128	1,200	CONDO	RESERVED
129	1,200	CONDO	RESERVED
130	1,200	CONDO	RESERVED
131	1,200	CONDO	RESERVED
132	1,200	CONDO	RESERVED
133	1,200	CONDO	RESERVED
134	1,200	CONDO	RESERVED
135	1,200	CONDO	RESERVED
136	1,200	CONDO	RESERVED
137	1,200	CONDO	RESERVED
138	1,200	CONDO	RESERVED
139	1,200	CONDO	RESERVED
140	1,200	CONDO	RESERVED
141	1,200	CONDO	RESERVED
142	1,200	CONDO	RESERVED
143	1,200	CONDO	RESERVED
144	1,200	CONDO	RESERVED
145	1,200	CONDO	RESERVED
146	1,200	CONDO	RESERVED
147	1,200	CONDO	RESERVED
148	1,200	CONDO	RESERVED
149	1,200	CONDO	RESERVED
150	1,200	CONDO	RESERVED
151	1,200	CONDO	RESERVED
152	1,200	CONDO	RESERVED
153	1,200	CONDO	RESERVED
154	1,200	CONDO	RESERVED
155	1,200	CONDO	RESERVED
156	1,200	CONDO	RESERVED
157	1,200	CONDO	RESERVED
158	1,200	CONDO	RESERVED
159	1,200	CONDO	RESERVED
160	1,200	CONDO	RESERVED
161	1,200	CONDO	RESERVED
162	1,200	CONDO	RESERVED
163	1,200	CONDO	RESERVED
164	1,200	CONDO	RESERVED
165	1,200	CONDO	RESERVED
166	1,200	CONDO	RESERVED
167	1,200	CONDO	RESERVED
168	1,200	CONDO	RESERVED
169	1,200	CONDO	RESERVED
170	1,200	CONDO	RESERVED
171	1,200	CONDO	RESERVED
172	1,200	CONDO	RESERVED
173	1,200	CONDO	RESERVED
174	1,200	CONDO	RESERVED
175	1,200	CONDO	RESERVED
176	1,200	CONDO	RESERVED
177	1,200	CONDO	RESERVED
178	1,200	CONDO	RESERVED
179	1,200	CONDO	RESERVED
180	1,200	CONDO	RESERVED
181	1,200	CONDO	RESERVED
182	1,200	CONDO	RESERVED
183	1,200	CONDO	RESERVED
184	1,200	CONDO	RESERVED
185	1,200	CONDO	RESERVED
186	1,200	CONDO	RESERVED
187	1,200	CONDO	RESERVED
188	1,200	CONDO	RESERVED
189	1,200	CONDO	RESERVED
190	1,200	CONDO	RESERVED
191	1,200	CONDO	RESERVED
192	1,200	CONDO	RESERVED
193	1,200	CONDO	RESERVED
194	1,200	CONDO	RESERVED
195	1,200	CONDO	RESERVED
196	1,200	CONDO	RESERVED
197	1,200	CONDO	RESERVED
198	1,200	CONDO	RESERVED
199	1,200	CONDO	RESERVED
200	1,200	CONDO	RESERVED



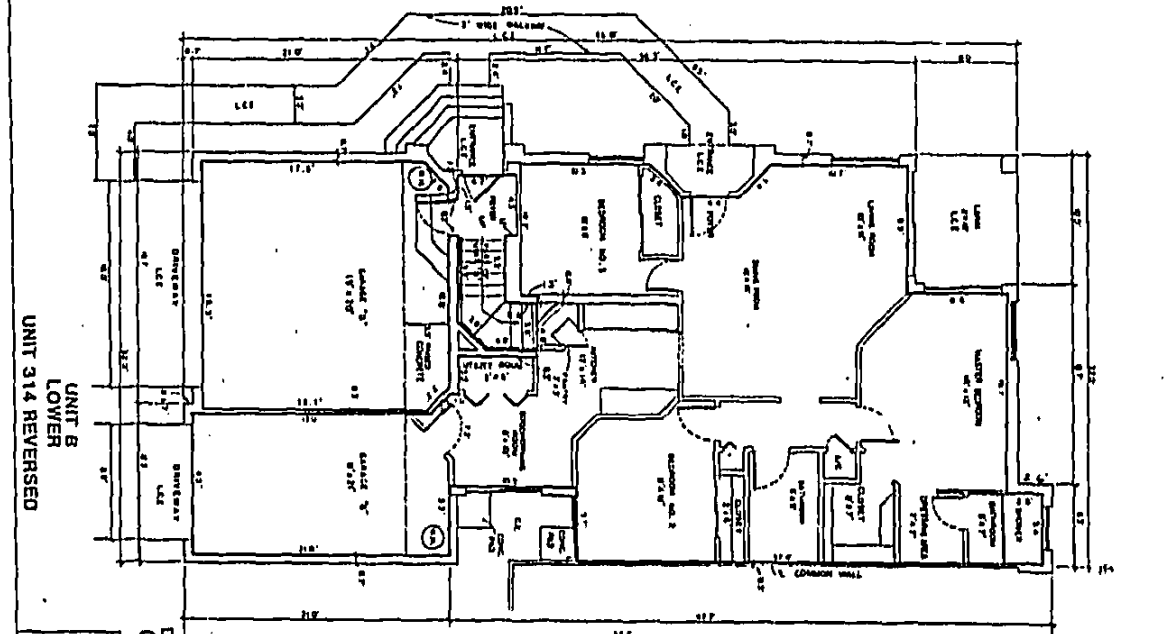
FLOOR PLANS AS SHOWN
 BUILDING NO. 3 PHASE 1
 CHAMPIONS GREEN, a CONDOMINIUM

Bean, Whitaker, Lutz & Barnes, Inc.
 CONSULTING ENGINEERS AND ARCHITECTS

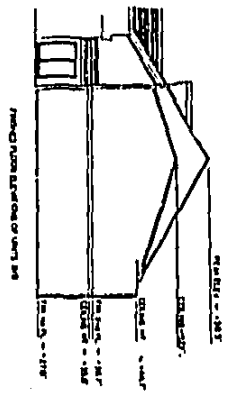
DATE: 10/15/88
 DRAWING NO.: 2317-10
 SHEET NO.: 2317-10-1



UNIT D
UPPER
UNIT 324 REVERSED



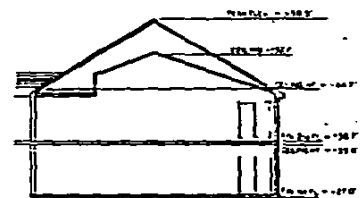
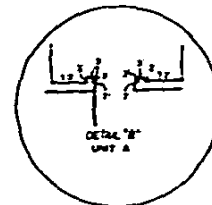
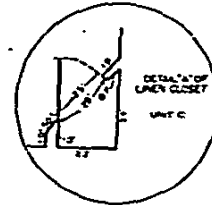
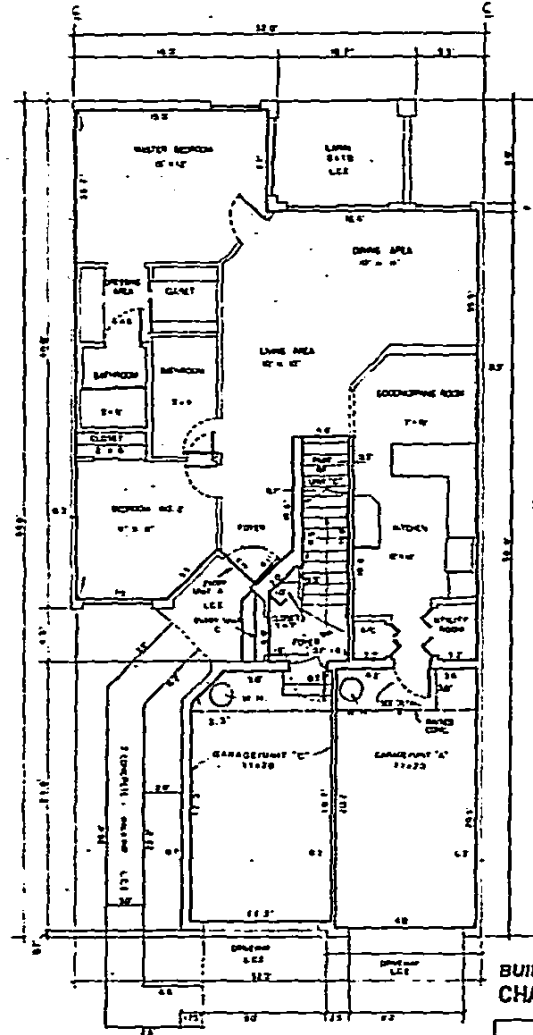
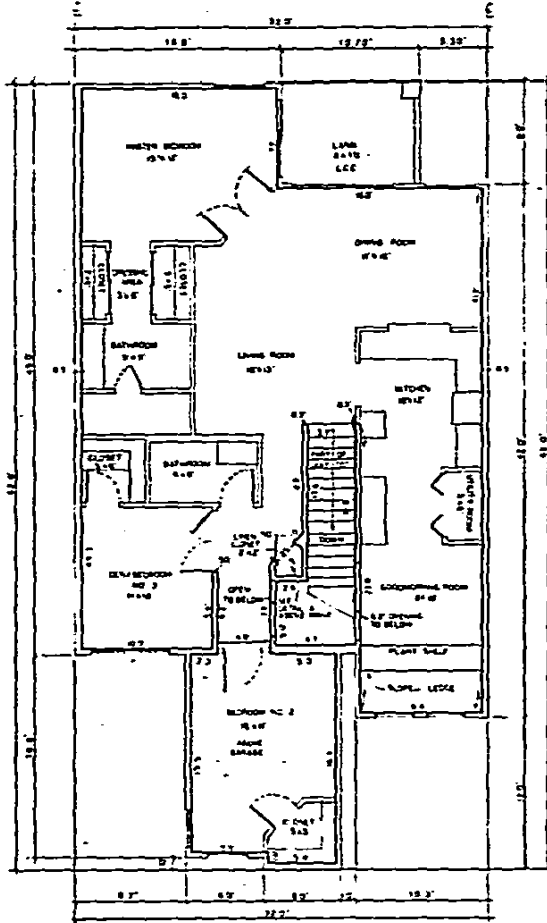
UNIT B
LOWER
UNIT 314 REVERSED



FLOOR PLANS
REVERSED
BUILDING NO. 3 PHASE I
CHAMPIONS GREEN, a CONDOMINIUM

Bohn, Wyllie, Lutz & Barlow, Inc.
CONSULTING ARCHITECTS AND ENGINEERS

DATE	NO.	BY	CHKD.	APP'D.
8-14-84	2004	JL	JL	JL



FLOOR PLANS AS SHOWN
OR REVERSED
BUILDING NO. 3 PHASE I
CHAMPIONS GREEN, a CONDOMINIUM

Bean, Whitaker, Lutz & Barnes, Inc.
CONSULTING ENGINEERS AND ARCHITECTS

DATE	12-10-88	PROJECT NO.	2307	SCALE	1/4" = 1'-0"	DATE	12-10-88
BY		CHECKED		APP. BY		DATE	