

THIS INSTRUMENT PREPARED BY:
Steven I. Winer
Smoot Adams Johnson & Green, P.A.
Post Office Box 06259
Fort Myers, FL 33906-6259

3235623

OR2314 PG2089

37-52

SECOND AMENDMENT TO DECLARATION OF CONDOMINIUM
OF CHAMPIONS GREEN, A CONDOMINIUM

WHEREAS, the Declaration of Condominium of Champions Green, a Condominium, was recorded in O.R. Book 2285, commencing at Page 3348, and subsequently amended in O.R. Book 2310, commencing at Page 3535, in the Public Records of Lee County, Florida; and

WHEREAS, Champions Green Ltd., a Florida Limited Partnership, as developer, has determined that Building 1 is substantially complete and the surveyor can now issue his Surveyor's Certificate.

NOW THEREFORE, the Developer amends the Declaration of Condominium of Champions Green, a Condominium, as follows:

1. Building 1 has been substantially completed together with all improvements appurtenant thereto, pursuant to the Surveyor's Certificate attached hereto as Exhibit "A".

2. The condominium plat of Exhibit "B" of the Declaration of Condominium shall be amended to read pursuant to Exhibit "B" attached hereto and made a part hereof.

IN ALL OTHER RESPECTS, the original Declaration as amended, is hereby ratified and confirmed.

IN WITNESS WHEREOF, this Second Amendment to the Declaration of Condominium of Champions Green, a Condominium, has been executed by the Developer this 16th day of July, 1992.

RECORD VERIFIED - CHARLIE GREEN, CLERK
BY: J. TURNER, D.C.

WITNESSES:

Kimberly S. Ende
Witness Signature

Kimberly S. Ende
Printed Name

Edward C. Wright
Witness Signature

Edward C Wright
Printed Name

CHAMPIONS GREEN, LTD., a Florida limited partnership

BY: CHAMPIONS GREEN DEVELOPMENT COMPANY, a Florida corporation, its general partner

BY: Kirt A. Reinert, V.P.
Kirt A. Reinert,
Vice President

STATE OF FLORIDA
COUNTY OF LEE

I HEREBY CERTIFY that on this day personally appeared before me, an officer duly authorized to administer oaths and take acknowledgments, KIRT A. REINERT, as Vice President of the General Partner, on behalf of said corporation as General Partner of CHAMPIONS GREEN, LTD., who executed the foregoing instrument and he acknowledged before me that he executed the same freely and voluntarily for the purposes therein expressed. He is personally known to me and did take an oath.

WITNESS my hand and official seal at Fort Myers, County of Lee and State of Florida, this 16th day of July, 1992.

My Commission Expires:
NOTARY PUBLIC STATE OF FLORIDA
MY COMMISSION EXP. JULY 7, 1995
BOARD OF NOTARIAL PUBLICS

Kelly E. Pokorny
Notary Public (SEAL)

Kelly E. Pokorny
Printed Name

CC125544
Commission Number

OR2314 PG2090

OR2314 PG2091

SURVEYOR'S CERTIFICATE

I, Scott C. Whitaker, hereby certify that the construction of the improvements of BUILDING 1 - PHASE 1, CHAMPIONS GREEN, a Condominium, is substantially complete so that this material, together with the provisions of the Declaration describing the condominium property and specifically relating to matters of survey are an accurate representation of the improvements and so that the identification, location and dimensions of the common elements and of each unit and, where applicable, the limited common elements can be determined from these materials. I further certify that all planned improvements, including landscaping, utility services and access to the unit and common element facilities serving the condominium shown on the attached site plan dated July 13, 1992, have been substantially completed.

Bean, Whitaker, Lutz & Barnes, Inc.

By: Scott C. Whitaker
Registered Land Surveyor
State of Florida No. 4324

STATE OF FLORIDA
COUNTY OF LEE

The foregoing instrument was acknowledged before me this July 15, 1992, by Scott C. Whitaker who is personally known to me and who did not take an oath.

Anne J. Trautman
Notary Public
ANNE J. TRAUTMAN

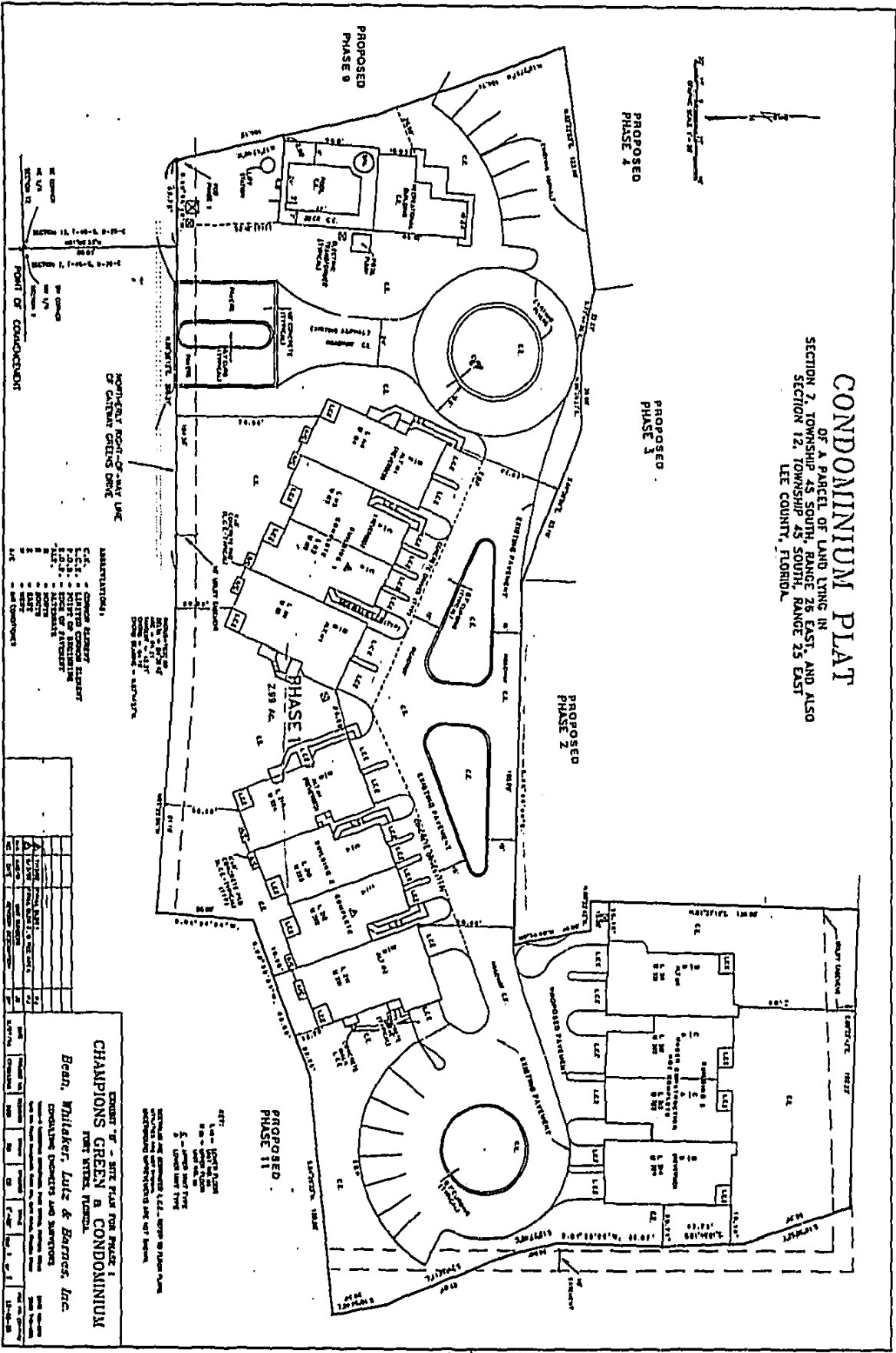
My Commission Expires:

NOTARY PUBLIC STATE OF FLORIDA
MY COMMISSION EXP. AUG. 4, 1995
BONDED THRU GENERAL INS. UND.

63-CERT1

Exhibit "A"

CONDOMINIUM PLAT
 OF A PARCEL OF LAND LYING IN
 SECTION 7, TOWNSHIP 45 SOUTH, RANGE 26 EAST, AND ALSO
 SECTION 12, TOWNSHIP 45 SOUTH, RANGE 25 EAST
 LEE COUNTY, FLORIDA.



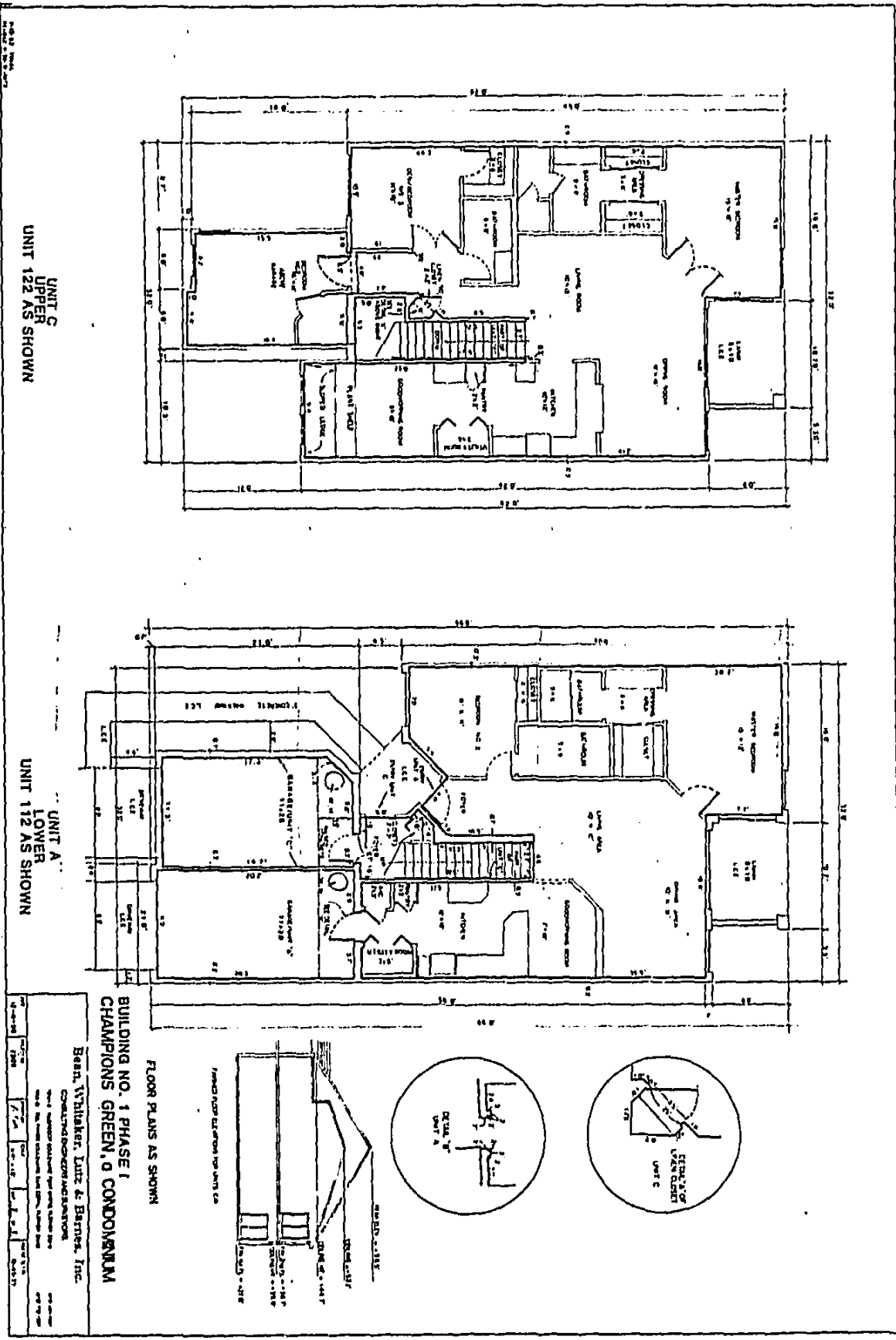
- ABBREVIATIONS:**
- C.L. - COMMON ELEMENTS
 - L.C.E. - LIMITED COMMON ELEMENTS
 - S.O.A. - SIDE OF ANCHORAGE
 - W.A. - WALL
 - W.C. - WALL CURB
 - W.D. - WALL DRAINAGE
 - W.F. - WALL FINISH
 - W.L. - WALL LINING
 - W.P. - WALL PAVING
 - W.S. - WALL SURFACE
 - W.T. - WALL TYPING
 - W.V. - WALL VENTILATION
 - W.W. - WALL WATER
 - W.Y. - WALL YIELDING
 - W.Z. - WALL ZONING

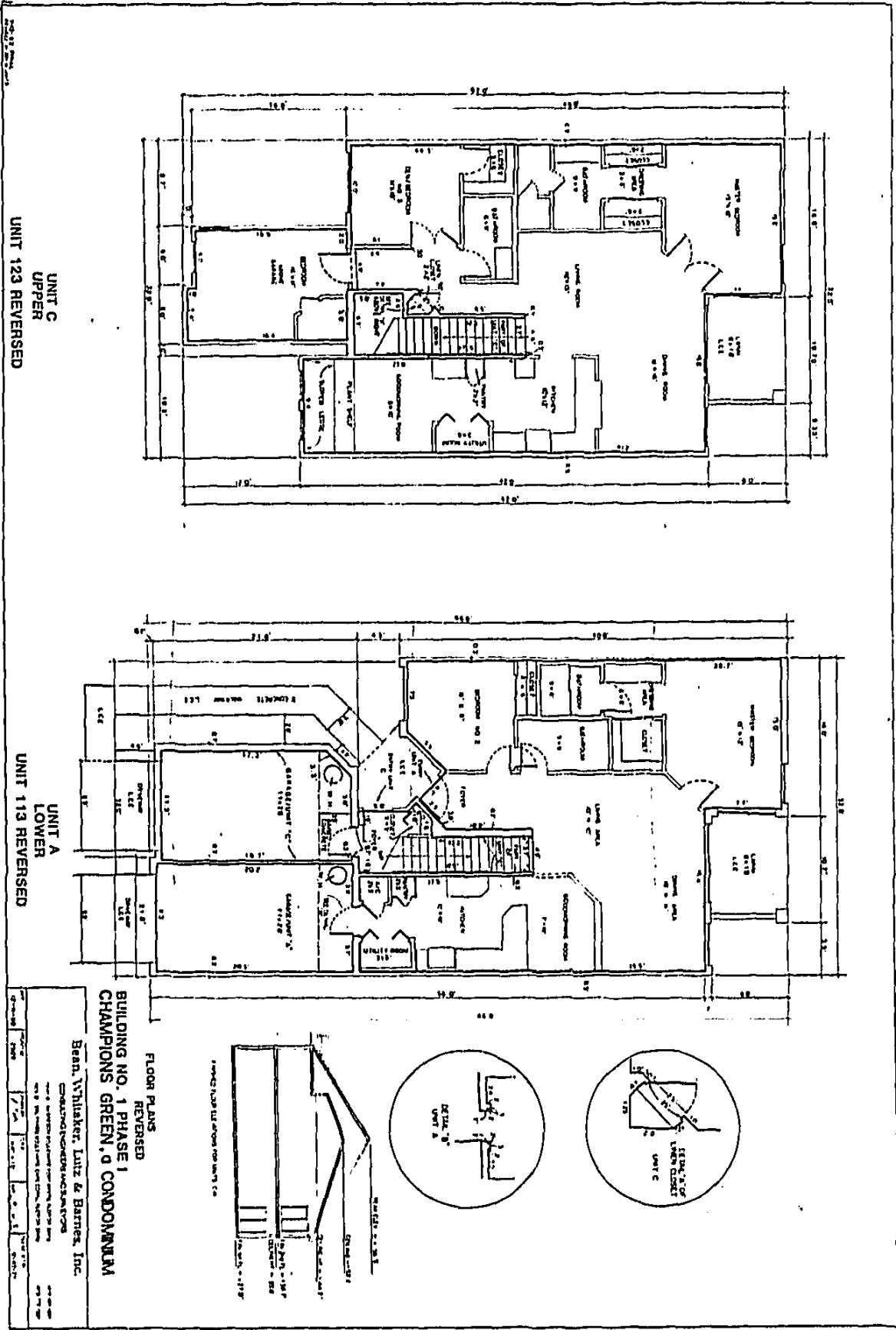
NO.	DESCRIPTION	AREA	PERCENTAGE
1	PHASE 1	285 AC.	100%
2	PHASE 2	1.00 AC.	100%
3	PHASE 3	1.00 AC.	100%
4	PHASE 4	1.00 AC.	100%
5	PHASE 5	1.00 AC.	100%
6	PHASE 6	1.00 AC.	100%
7	PHASE 7	1.00 AC.	100%
8	PHASE 8	1.00 AC.	100%
9	PHASE 9	1.00 AC.	100%

**EXHIBIT "B" - SITE PLAN FOR PHASE 1
 CHAMPIONS GREEN 8 CONDOMINIUM
 PINE HILLS, FLORIDA.**

Bean, Whitaker, Lutz & Barnes, Inc.
 CONSULTING ENGINEERS AND ARCHITECTS
 1000 N. W. 10th Street, Suite 1000
 Ft. Lauderdale, Florida 33304
 Phone: (305) 555-1111

Exhibit "B"

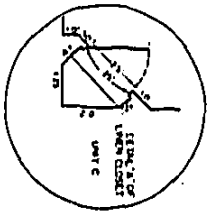
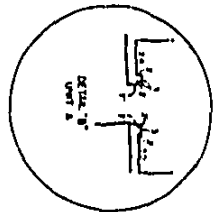
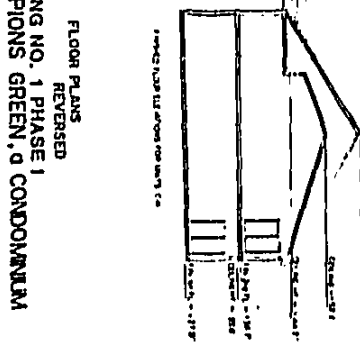


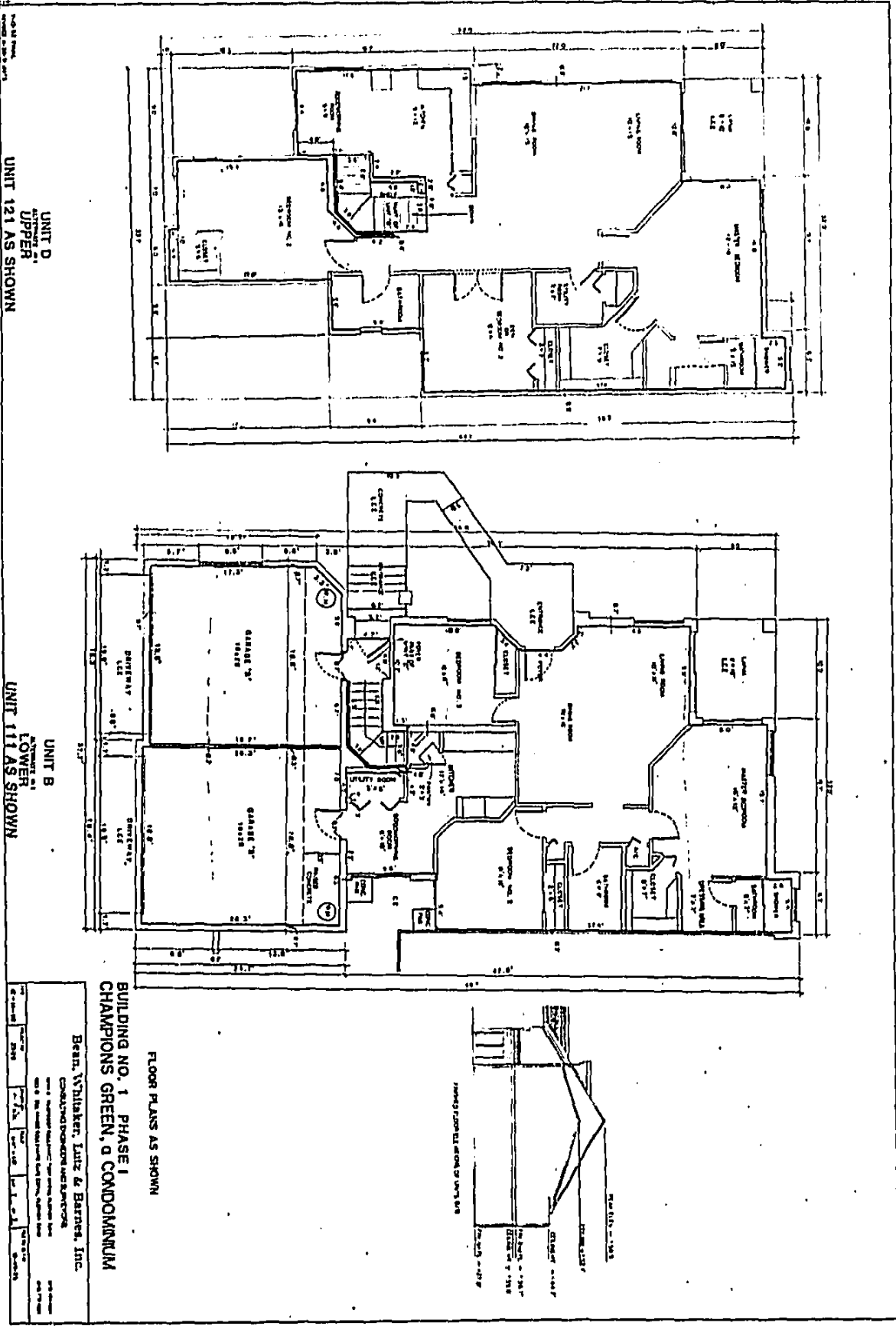


UNIT C
UPPER
UNIT 123 REVERSED

UNIT A
LOWER
UNIT 113 REVERSED

**FLOOR PLANS
REVERSED**
**BUILDING NO. 1 PHASE 1
 CHAMPIONS GREEN, D CONDOMINIUM**
 Bean, Whisker, Lutz & Barnes, Inc.
 CONSULTING ENGINEERS ARCHITECTS
 1000 S. 10th Street, Suite 1000, Phoenix, AZ 85026
 602-258-1100

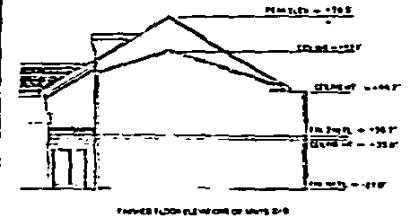
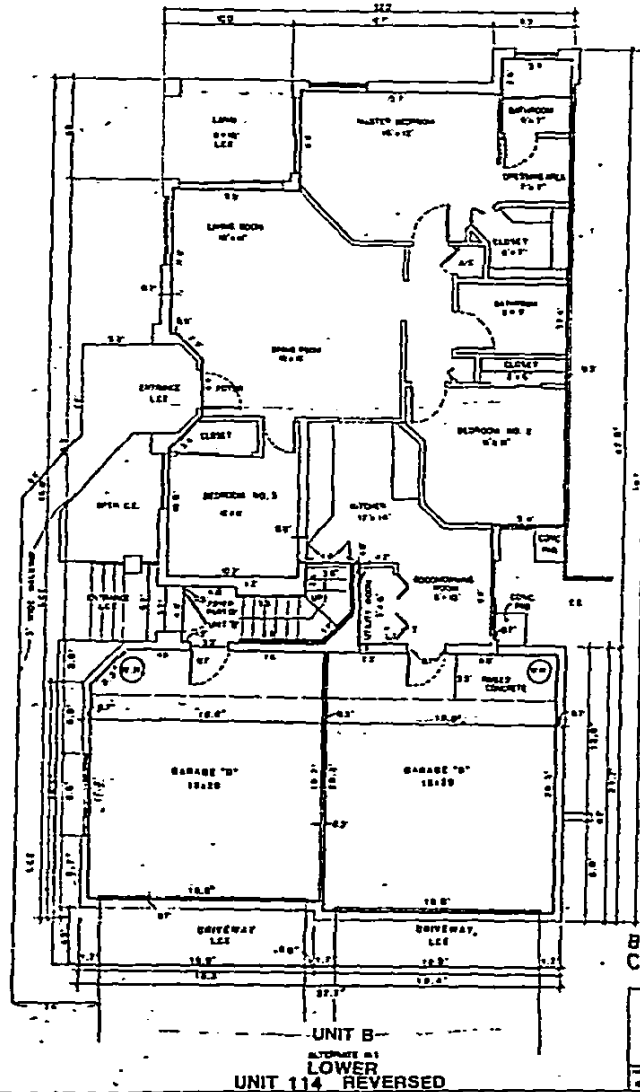
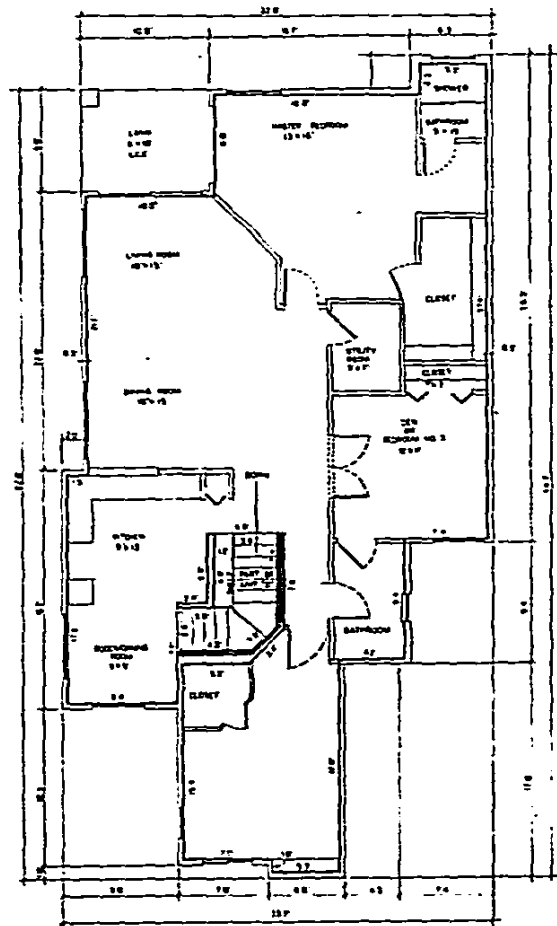




OR2314 PG2096

CHARLIE GREEN LEE CTY FL

92 JUL 17 PM 4:08



FLOOR PLANS
REVERSED
BUILDING NO.1 PHASE 1
CHAMPIONS GREEN, a CONDOMINIUM

Bean, Whitaker, Lutz & Barnes, Inc.
CONSULTING ENGINEERS/ARCHITECTS

DATE	NO.	BY	CHKD.	APP'D.	REV.
07-17-92	2000	WLB	WLB	WLB	WLB