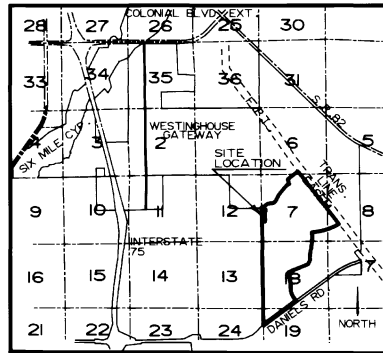


GATEWAY PHASE 8

NOTICE:
 LANDS DESCRIBED IN THIS PLAT ARE SUBDIVIDED BY THE DEVELOPER WITHOUT THE ROADS, DRAINAGE AND SEWER FACILITIES BEING SPECIFICALLY ACCEPTED FOR MAINTENANCE BY LEE COUNTY. ANY PURCHASER OF A LOT IN THIS SUBDIVISION IS ADVISED THAT HE MAY BE SUBJECT TO ASSESSMENT OR CALLED UPON TO BEAR A PORTION OF OR ALL OF THE EXPENSE OF CONSTRUCTION, MAINTENANCE OR IMPROVEMENT OF ROADS, DRAINAGE AND SEWER FACILITIES.

A SUBDIVISION LOCATED IN
 SECTION 7, T45S, R26E AND
 SECTION 12, T45S, R25E
 LEE COUNTY, FLORIDA



LOCATION MAP

PREPARED BY:
 HOLE, MONTES AND ASSOCIATES, INC
 6202-F PRESIDENTIAL CT. S.W.
 FT. MYERS, FLA. 33919 (813) 481-7874

DEDICATION

KNOW ALL MEN BY THESE PRESENTS THAT WESTINGHOUSE GATEWAY COMMUNITIES, INC., A FLORIDA CORPORATION, AND FIRST TEE DEVELOPERS, LTD., A FLORIDA LIMITED PARTNERSHIP, OWNERS OF THE LANDS DESCRIBED HEREIN HAVE CAUSED THIS PLAT TO BE MADE AND SUCH LANDS TO BE SUBDIVIDED AS SHOWN HEREON; SAID PLAT TO BE KNOWN AS GATEWAY PHASE 8 AND DO MAKE THE FOLLOWING DEDICATIONS:

THE ROAD RIGHTS-OF-WAY OF GATEWAY GREENS DRIVE AND WESTLINKS DRIVE (HEREINAFTER COLLECTIVELY REFERRED TO AS TRACT "A") AND TRACT "E" TO THE GATEWAY GREENS COMMUNITY ASSOCIATION, INC. FOR THE BENEFIT OF ITS PRESENT AND FUTURE MEMBERS, ITS SUCCESSORS AND ITS ASSIGNS, AND THEIR TENANTS, INVITEES, LICENSEES, MORTGAGEES, AND EMPLOYEES, RESERVING UNTO WESTINGHOUSE GATEWAY COMMUNITIES, INC. ITS SUCCESSORS, ITS ASSIGNS, EMPLOYEES AND INVITEES A PERPETUAL RIGHT FOR INGRESS AND EGRESS ON AND OVER SAID TRACTS "A" AND "E".

THE ROAD RIGHTS-OF-WAY OF SABAL DUNES LANE, SABAL LAKES LANE AND SABAL GREENS LANE, TRACTS "F", "G" AND "H" RESPECTIVELY; TRACTS "B", "C", AND "D", THE LANDSCAPE TRANSITION YARD AND PRIVACY WALL EASEMENT TO THE SABAL DUNES COMMUNITY ASSOCIATION, INC. FOR THE BENEFIT OF ITS PRESENT AND FUTURE MEMBERS, ITS SUCCESSORS AND ITS ASSIGNS AND THEIR TENANTS, INVITEES, LICENSEES, MORTGAGEES, AND EMPLOYEES.

LAKE MAINTENANCE AND DRAINAGE EASEMENTS SHOWN HEREON ARE DEDICATED TO THE GATEWAY SERVICES DISTRICT.

AN EASEMENT FOR DRAINAGE AND UTILITY PURPOSES ON, AND UNDER TRACTS "A", "E", "F", "G" & "H" IS HEREBY GRANTED TO THE GATEWAY SERVICES DISTRICT AND PUBLIC UTILITIES.

ALL UTILITY EASEMENTS SHOWN HEREON ARE FOR PURPOSES OF INSTALLATION, REPAIR AND MAINTENANCE OF WATER, SEWER, ELECTRIC AND TELEPHONE AND WESTINGHOUSE GATEWAY COMMUNITIES, INC. HEREBY RESERVES TO GATEWAY / JONES COMMUNICATIONS, LTD. ITS SUCCESSORS AND ASSIGNS THE ADDITIONAL AND EXCLUSIVE USE OF SAID UTILITY EASEMENTS FOR CABLE TELEVISION PURPOSES.

IN WITNESS WHEREOF, WESTINGHOUSE GATEWAY COMMUNITIES, INC. AND FIRST TEE DEVELOPERS, LTD. HAVE CAUSED THIS DEDICATION TO BE EXECUTED BY THEIR DULY AUTHORIZED OFFICERS.
 THIS 8th DAY OF February, 1991 A.D.

Joanna Finn WESTINGHOUSE GATEWAY COMMUNITIES, INC.
 WITNESS
James B. Jones BY Jerry H. Schmoeyer, EXEC. VICE PRES.
 WITNESS
David W. Caldwell FIRST TEE DEVELOPERS, LTD.,
 WITNESS A FLORIDA LIMITED PARTNERSHIP, BY
Joanna Finn BY Ted L. Norris, PRESIDENT.
 WITNESS

APPROVAL

THIS PLAT ACCEPTED THIS 10th DAY OF APRIL A.D. 1991, IN OPEN MEETING OF THE BOARD OF COUNTY COMMISSIONERS OF LEE COUNTY, FLORIDA.

Marshall APPROVED: CHAIRMAN OF THE BOARD
Charles Green ATTEST: CLERK OF COURT
Paul B. Bangs APPROVED: DIRECTOR, DIVISION OF DEVELOPMENT REVIEW
Joan W. Stoltz APPROVED: COUNTY ATTORNEY
Tom B. B... APPROVED: DIRECTOR, DEPARTMENT OF COMMUNITY DEVELOPMENT



NOTES:

1. ALL DIMENSIONS ARE IN FEET AND DECIMALS THEREOF.
2. ALL DIMENSIONS ON CURVES ARE ARC LENGTHS UNLESS OTHERWISE NOTED "L" = ARC.
3. BASIS FOR BEARING IS THE WEST LINE OF THE SOUTHWEST 1/4 OF SECTION 17, TOWNSHIP 45 SOUTH, RANGE 26 EAST BEING N 00°-57'-26 W.
4. G.S.D.D.E. AND G.S.D.U.E. INDICATES GATEWAY SERVICES DISTRICT DRAINAGE EASEMENTS AND UTILITY EASEMENTS RESPECTFULLY.
5. ALL CURVES INDICATED ARE CIRCULAR.
6. ● INDICATES PERMANENT REFERENCE MONUMENT (P.R.M.)
7. ● INDICATES PERMANENT CONTROL POINT (P.C.P.)
8. D.E. = DRAINAGE EASEMENT
9. U.E. = UTILITY EASEMENT
10. A 10.0 FOOT UTILITY EASEMENT IS RESERVED ALONG THE FRONT LINE OF EACH LOT WITHIN BLOCK "A". SEE PLAT FOR ADDITIONAL EASEMENTS.
11. (NR) INDICATES NON-RADIAL LINE.

CERTIFICATION

8007721

I HEREBY CERTIFY THAT THE ATTACHED PLAT OF GATEWAY PHASE 8, LEE COUNTY, FLORIDA, HAS BEEN EXAMINED BY ME AND FROM MY EXAMINATION I FIND THAT SAID PLAT COMPLIES WITH THE REQUIREMENTS OF CHAPTER 177, LAWS OF FLORIDA. I FURTHER CERTIFY THAT THIS PLAT WAS FILED FOR RECORD AT 9:12 A.M., THIS 16th DAY OF APRIL A.D., 1991, AND DULY RECORDED IN PLAT BOOK 47 AT PAGES 732-734 PUBLIC RECORDS OF LEE COUNTY, FLORIDA.

Charles Green
 CLERK OF COURT



GATEWAY SERVICES DISTRICT

THIS PLAT APPROVED IN OPEN MEETING OF THE GATEWAY SERVICES DISTRICT THIS 12TH DAY OF NOVEMBER, 1990. THE DISTRICT HEREBY ACKNOWLEDGES ACCEPTANCE OF DRAINAGE EASEMENTS AND DRAINAGE OF ALL LANDS CONTAINED WITHIN THIS PLAT.

David W. Caldwell WITNESS AS TO BOTH
Douglas S. Brown DOUGLAS G. BROWN, PRESIDENT GATEWAY SERVICES DISTRICT
Cathy J. Fanelly WITNESS AS TO BOTH
Steven R. Whitley STEVEN WHITLEY, SECRETARY GATEWAY SERVICES DISTRICT

ACKNOWLEDGEMENT

STATE OF FLORIDA
 COUNTY OF LEE

I HEREBY CERTIFY THAT ON THIS DAY PERSONALLY APPEARED BEFORE ME, TED L. NORRIS, PRESIDENT OF CHRISTIAN-LOYD DEVELOPMENT CORPORATION, GENERAL PARTNER OF FIRST TEE DEVELOPERS, LTD., A FLORIDA LIMITED PARTNERSHIP, TO ME KNOWN TO BE THE PERSON DESCRIBED IN AND WHO EXECUTED THE FOREGOING DEDICATION AND HE ACKNOWLEDGED THE EXECUTION THEREOF TO BE HIS OWN FREE ACT AND DEED AS SUCH AN OFFICER FOR THE USE AND PURPOSES THEREIN MENTIONED. WITNESS MY HAND AND OFFICIAL SEAL AT FORT MYERS, SAID COUNTY AND STATE THIS 12th DAY OF FEBRUARY, 1991 A.D.

Joanna Finn
 NOTARY PUBLIC STATE OF FLORIDA AT LARGE
 MY COMMISSION EXPIRES: July 31, 1991

NOTICE

THERE MAY BE ADDITIONAL RESTRICTIONS THAT ARE NOT RECORDED ON THIS PLAT THAT MAY BE FOUND IN THE PUBLIC RECORDS OF THIS COUNTY.

ACKNOWLEDGEMENT

STATE OF FLORIDA
 COUNTY OF LEE

I HEREBY CERTIFY THAT ON THIS DAY PERSONALLY APPEARED BEFORE ME, JERRY H. SCHMOYER, EXECUTIVE VICE PRESIDENT OF WESTINGHOUSE GATEWAY COMMUNITIES, INC., A FLORIDA CORPORATION, TO ME KNOWN TO BE THE PERSON DESCRIBED IN AND WHO EXECUTED THE FOREGOING DEDICATION AND HE ACKNOWLEDGED THE EXECUTION THEREOF TO BE HIS OWN FREE ACT AND DEED AS SUCH AN OFFICER FOR THE USE AND PURPOSES THEREIN MENTIONED. WITNESS MY HAND AND OFFICIAL SEAL AT FORT MYERS, SAID COUNTY AND STATE THIS 8th DAY OF February, 1991 A.D.

Joanna Finn
 NOTARY PUBLIC STATE OF FLORIDA AT LARGE
 MY COMMISSION EXPIRES: July 31, 1991

D.O. 8-1-86 GATEWAY GREENS DRIVE
 D.O. 10-8-89 PARCEL 20 - 1
 D.O. 7-1-90 PARCEL 20 - 2
 D.O. 3-9-90 WESTLINKS - 1

Thomas Jackson Garris
 THOMAS JACKSON GARRIS
 PROFESSIONAL LAND SURVEYOR
 FLORIDA CERTIFICATE NUMBER 3741
13th DAY OF February, 1991

GATEWAY PHASE 8

A SUBDIVISION LOCATED IN A PORTION OF THE WEST HALF OF SECTION 7, TWSP. 45 SOUTH, RANGE 26 EAST, AND A PORTION OF THE NORTHEAST QUARTER OF SECTION 12, TWSP. 45 SOUTH, RANGE 25 EAST, LEE COUNTY, FLORIDA.

HOLE, MONTES AND ASSOCIATES
CONSULTING ENGINEERS AND SURVEYORS
6202F PRESIDENTIAL COURT
FORT MYERS, FLORIDA 33919
(813) 481-7874

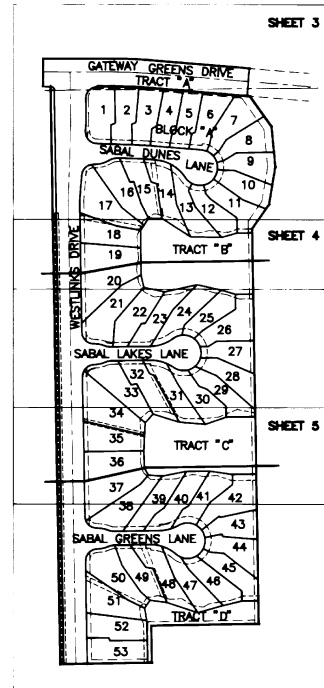
PROPERTY DESCRIPTION

A PARCEL OF LAND LOCATED IN A PORTION OF THE WEST HALF OF SECTION 7, TOWNSHIP 45 SOUTH, RANGE 26 EAST, AND A PORTION OF THE NORTHEAST QUARTER OF SECTION 12, TOWNSHIP 45 SOUTH, RANGE 25 EAST, LEE COUNTY, FLORIDA; BEING MORE PARTICULARLY DESCRIBED AS FOLLOWS:

BEGIN AT THE SOUTHWEST CORNER OF THE NORTHWEST QUARTER OF SECTION 7, TOWNSHIP 45 SOUTH, RANGE 26 EAST, THENCE RUN N. 01°05'33" W. FOR A DISTANCE OF 10.00 FEET; THENCE RUN S. 89°55'12" W. FOR A DISTANCE OF 19.52 FEET; THENCE RUN N. 00°04'48" W. FOR A DISTANCE OF 70.00 FEET; THENCE RUN N. 89°55'12" E. FOR A DISTANCE OF 182.84 FEET; TO THE BEGINNING OF A TANGENTIAL CIRCULAR CURVE, CONCAVE TO THE SOUTH, WHOSE RADIUS POINT BEARS S. 00°04'48" E., A DISTANCE OF 1035.00 FEET THEREFROM; THENCE RUN EASTERLY ALONG THE ARC OF SAID CURVE TO THE RIGHT HAVING A RADIUS OF 1035.00 FEET, THROUGH A CENTRAL ANGLE OF 04°39'42", SUBTENDED BY A CHORD OF 84.19 FEET AT A BEARING OF S. 87°44'57" E., FOR A DISTANCE OF 84.21 FEET; THENCE RUN S. 85°25'06" E. FOR A DISTANCE OF 262.76 FEET; THENCE RUN S. 04°34'54" W. FOR A DISTANCE OF 70.00 FEET; THENCE RUN S. 85°25'06" E. FOR A DISTANCE OF 6.79 FEET; THENCE RUN S. 35°45'00" E FOR A DISTANCE OF 94.00 FEET; THENCE RUN S. 05°41'00" E. FOR A DISTANCE OF 103.00 FEET; THENCE RUN S. 09°39'00" W. FOR A DISTANCE OF 96.00 FEET; THENCE RUN S. 35°00'00" W. FOR A DISTANCE OF 75.71 FEET; THENCE RUN S. 00°57'26" E. FOR A DISTANCE OF 999.90 FEET; THENCE RUN S. 89°02'34" W. FOR A DISTANCE OF 275.09 FEET; THENCE RUN S. 00°57'26" E. FOR A DISTANCE OF 94.33 FEET; THENCE RUN S. 89°02'34" W. FOR A DISTANCE OF 234.85 FEET; THENCE RUN N. 00°57'26" W. ALONG THE WESTERLY LINE OF SECTION 7, TOWNSHIP 45 SOUTH, RANGE 26 EAST, FOR A DISTANCE OF 1452.63 FEET TO THE POINT OF BEGINNING; CONTAINING 17.570 ACRES OF LAND, MORE OR LESS.

SUBJECT TO EASEMENTS, RESTRICTIONS AND RESERVATIONS OF RECORD.

KEY MAP



MORTGAGEE'S CONSENT TO DEDICATION

KNOW ALL MEN BY THESE PRESENTS THAT WESTINGHOUSE GATEWAY COMMUNITIES, INC. AS HOLDER OF A MORTGAGE RECORDED IN OFFICIAL RECORD BOOK 2107 AT PAGES 1144 THROUGH 1148 OF THE PUBLIC RECORDS OF LEE COUNTY, FLORIDA ON THE HEREIN DESCRIBED LANDS DOES HEREBY JOIN IN THE PLAT DEDICATION, APPEARING HEREON THIS 8th DAY OF February, 1991.

Jean Finn WESTINGHOUSE GATEWAY COMMUNITIES, INC.
WITNESS
Laura August BY Jerry H. Schmoyer
WITNESS JERRY H. SCHMOYER, EXEC. VICE PRES.

ACKNOWLEDGEMENT

STATE OF FLORIDA
COUNTY OF LEE

THE FOREGOING INSTRUMENT WAS ACKNOWLEDGED BEFORE ME THIS 8th DAY OF February, 1991 A.D. BY JERRY H. SCHMOYER, EXEC. VICE PRESIDENT OF WESTINGHOUSE GATEWAY COMMUNITIES, INC., A FLORIDA CORPORATION, ON BEHALF OF THE CORPORATION.

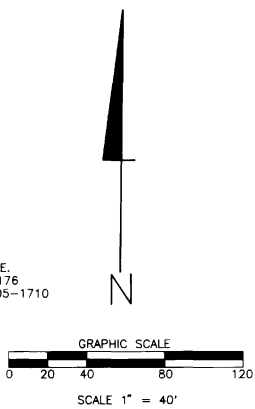
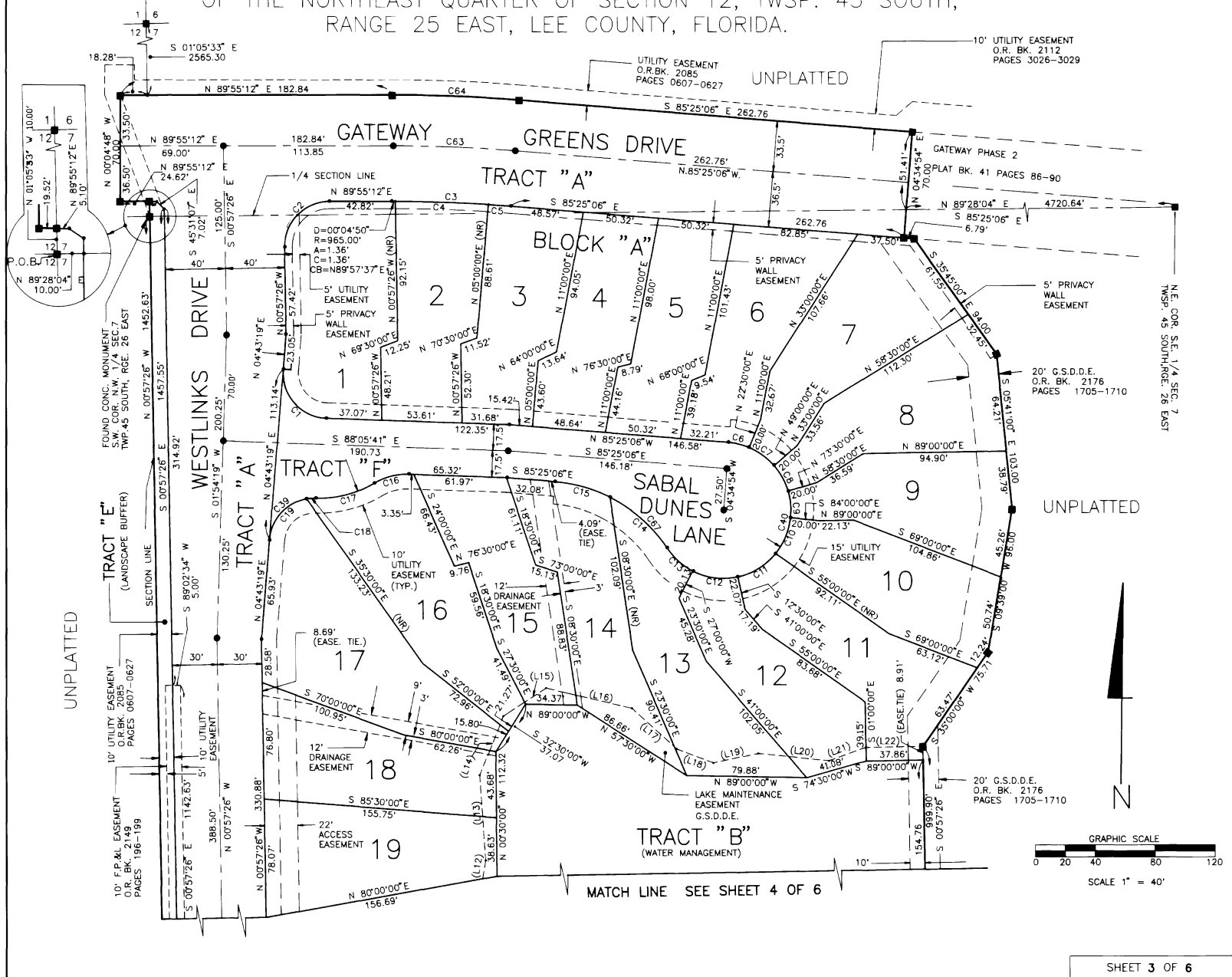
Jean Finn
NOTARY PUBLIC STATE OF FLORIDA AT LARGE

MY COMMISSION EXPIRES: July 31, 1991

GATEWAY PHASE 8

A SUBDIVISION LOCATED IN A PORTION OF THE WEST HALF OF SECTION 7, TWSP. 45 SOUTH, RANGE 26 EAST, AND A PORTION OF THE NORTHEAST QUARTER OF SECTION 12, TWSP. 45 SOUTH, RANGE 25 EAST, LEE COUNTY, FLORIDA.

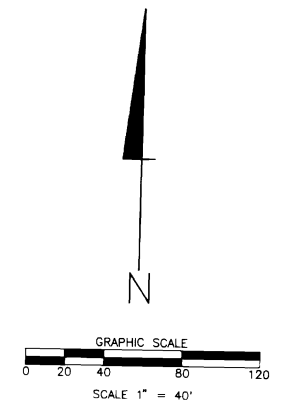
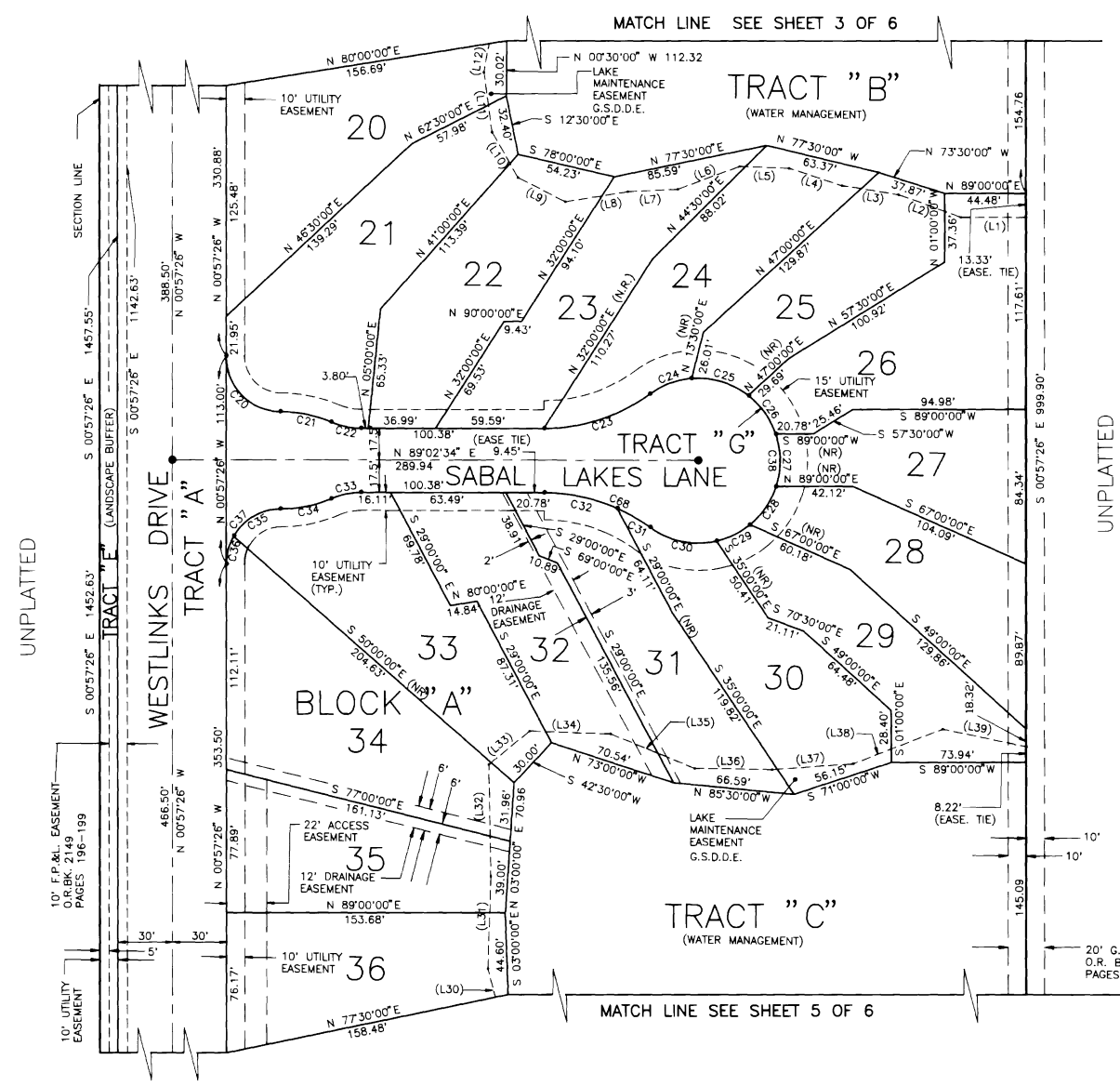
HOLE, MONTES AND ASSOCIATES
CONSULTING ENGINEERS AND SURVEYORS
6202F PRESIDENTIAL COURT
FORT MYERS, FLORIDA 33919
(813) 481-7874



HOLE, MONTES AND ASSOCIATES
 CONSULTING ENGINEERS AND SURVEYORS
 6202F PRESIDENTIAL COURT
 FORT MYERS, FLORIDA 33919
 (813) 481-7874

GATEWAY PHASE 8

A SUBDIVISION LOCATED IN A PORTION OF THE WEST HALF OF SECTION 7, TWSP. 45 SOUTH, RANGE 26 EAST, AND A PORTION OF THE NORTHEAST QUARTER OF SECTION 12, TWSP. 45 SOUTH, RANGE 25 EAST, LEE COUNTY, FLORIDA.



UNPLATTED

UNPLATTED

10' F.P.H. EASEMENT
 O.R. BK. 2149
 PAGES 196-199

10' UTILITY
 EASEMENT

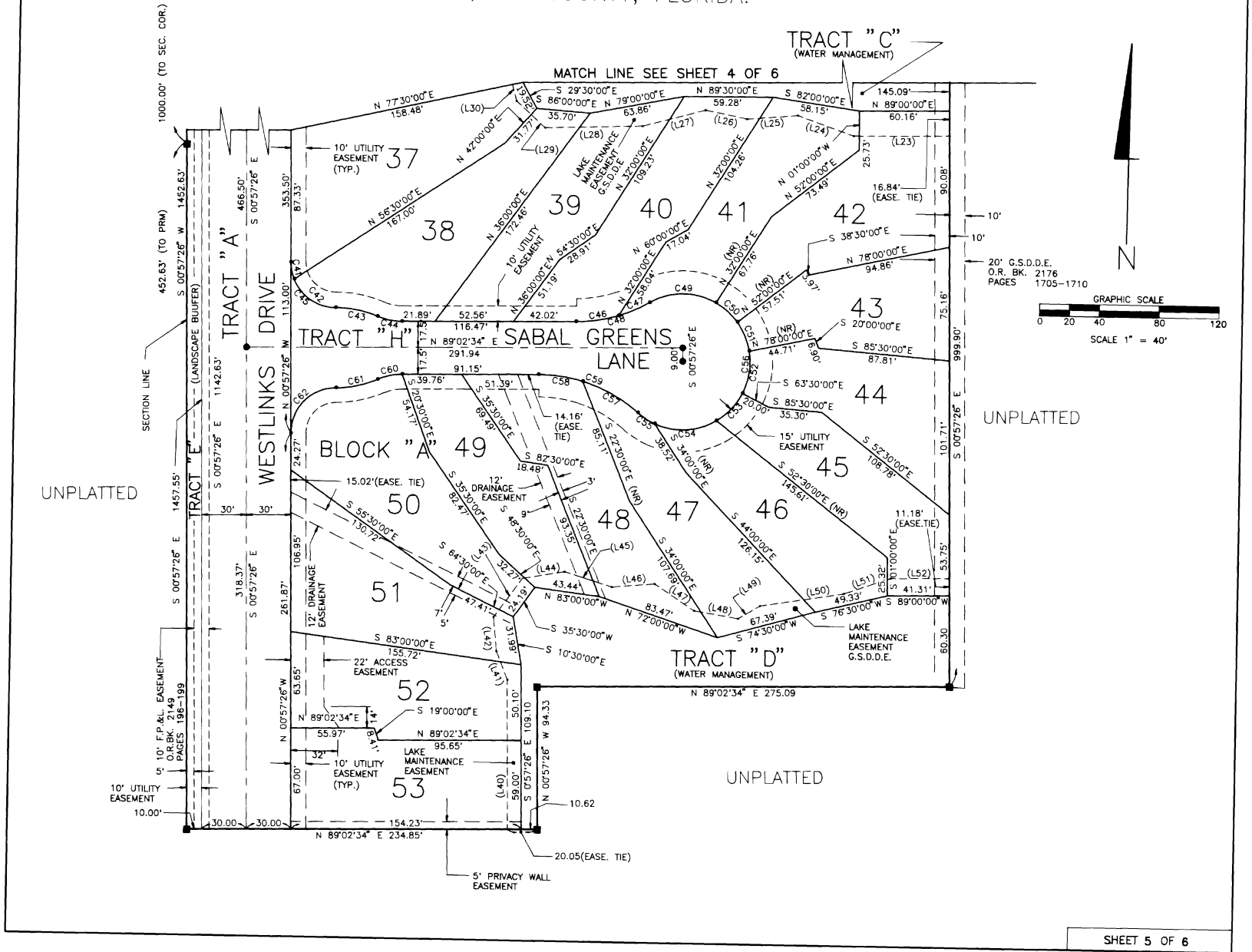
TRACT "C"
 (WATER MANAGEMENT)

20' G.S.D.D.E.
 O.R. BK. 2176
 PAGES 1705-1710

GATEWAY PHASE 8

A SUBDIVISION LOCATED IN A PORTION OF THE WEST HALF OF SECTION 7, TWSP. 45 SOUTH, RANGE 26 EAST, AND A PORTION OF THE NORTHEAST QUARTER OF SECTION 12, TWSP. 45 SOUTH, RANGE 25 EAST, LEE COUNTY, FLORIDA.

HOLE, MONTES AND ASSOCIATES
CONSULTING ENGINEERS AND SURVEYORS
6202F PRESIDENTIAL COURT
FORT MYERS, FLORIDA 33919
(813) 481-7874



GATEWAY PHASE 8

A SUBDIVISION LOCATED IN A PORTION OF THE WEST HALF OF SECTION 7, TWSP. 45 SOUTH, RANGE 26 EAST, AND A PORTION OF THE NORTHEAST QUARTER OF SECTION 12, TWSP. 45 SOUTH, RANGE 26 EAST, LEE COUNTY, FLORIDA.

HOLE, MONTES AND ASSOCIATES
CONSULTING ENGINEERS AND SURVEYORS
6202F PRESIDENTIAL COURT
FORT MYERS, FLORIDA 33919
(813) 481-7874

CURVE TABLE

CURVE NUMBER	RADIUS	DELTA	ARC LENGTH	CHORD LENGTH	CHORD BEARING
1	30.00	92°49'00"	48.60	43.46	S 41°41'11" E
2	30.00	90°52'38"	47.58	42.75	N 44°28'53" E
3	965.00	04°39'42"	78.52	78.49	S 87°44'57" E
4	965.00	03°41'35"	62.20	62.19	S 88°09'10" E
5	965.00	00°53'17"	14.96	14.96	S 85°51'44" E
6	45.00	17°55'06"	14.07	14.02	S 76°27'33" E
7	45.00	26°30'00"	20.81	20.63	S 54°15'00" E
8	45.00	24°30'00"	19.24	19.10	S 28°45'00" E
9	45.00	22°30'00"	17.67	17.56	S 05°15'00" E
10	45.00	33°25'22"	26.25	25.88	S 22°42'41" W
11	45.00	38°04'38"	29.91	29.36	S 58°27'41" W
12	45.00	39°30'00"	31.02	30.41	N 82°45'00" W
13	45.00	29°12'55"	22.95	22.70	N 48°23'33" W
14	100.00	29°30'30"	51.50	50.93	S 48°32'20" E
15	100.00	22°07'30"	38.62	38.38	S 74°21'21" E
16	42.50	32°29'27"	24.10	23.78	N 75°39'36" E
17	72.50	32°29'27"	41.11	40.56	N 75°39'36" E
18	30.00	11°35'33"	6.07	6.06	N 86°06'32" E
19	30.00	75°35'27"	39.58	36.77	N 42°31'02" E
20	30.00	90°00'00"	47.12	42.43	S 45°57'26" E
21	72.50	22°49'06"	28.87	28.68	S 79°32'53" E
22	42.50	22°49'06"	16.93	16.81	S 79°32'53" E
23	100.00	35°52'13"	62.61	61.59	N 71°06'28" E
24	45.00	31°20'30"	24.62	24.31	N 68°50'36" E
25	45.00	42°10'56"	33.13	32.39	S 74°23'40" E
26	45.00	33°19'05"	26.17	25.80	S 36°38'40" E
27	45.00	37°11'09"	29.21	28.70	S 01°23'33" E
28	45.00	32°38'48"	25.64	25.30	S 33°31'25" W
29	45.00	26°14'25"	20.61	20.43	S 62°58'01" W
30	45.00	48°49'34"	38.35	37.20	N 79°29'59" W
31	100.00	12°02'09"	21.01	20.97	N 61°06'17" W
32	100.00	23°50'04"	41.60	41.30	N 79°02'23" W
33	42.50	22°49'06"	16.93	16.81	S 77°38'01" W
34	72.50	22°49'06"	28.87	28.68	S 77°38'01" W
35	30.00	59°54'58"	31.37	29.96	S 59°05'06" W
36	30.00	30°03'02"	15.75	15.57	S 14°05'06" W
37	30.00	90°00'00"	47.12	42.43	S 44°02'34" W
38	45.00	25°14'42"	197.72	72.93	S 00°57'26" E
39	30.00	87°11'00"	45.65	41.37	N 48°18'49" E
40	45.00	231°38'01"	181.92	81.02	S 30°23'55" W
41	30.00	21°54'52"	11.47	11.40	S 11°54'51" E
42	30.00	68°05'08"	35.65	33.59	S 56°54'51" E
43	72.50	22°49'06"	28.87	28.68	S 79°32'53" E
44	42.50	22°49'06"	16.93	16.81	S 79°32'53" E
45	30.00	90°00'00"	47.12	42.43	S 45°57'26" E
46	100.00	16°18'34"	28.47	28.37	N 80°53'17" E
47	100.00	12°57'01"	22.60	22.55	N 66°15'30" E
48	100.00	29°15'35"	51.07	50.51	N 74°24'47" E
49	45.00	59°01'15"	46.35	44.33	N 89°17'37" E
50	45.00	24°35'51"	19.32	19.17	S 48°53'49" E
51	45.00	26°39'00"	20.93	20.74	S 23°16'24" E
52	45.00	36°26'55"	28.63	28.15	S 08°16'33" W
53	45.00	32°19'25"	25.39	25.05	S 42°39'42" W
54	45.00	54°34'42"	42.87	41.26	S 86°06'45" W
55	45.00	17°12'00"	13.51	13.46	N 57°59'54" W
56	45.00	25°49'06"	196.99	73.35	S 05°11'33" W
57	100.00	24°22'49"	42.55	42.23	N 61°35'18" W
58	100.00	17°10'43"	29.98	29.87	N 82°22'04" W
59	100.00	41°33'32"	72.53	70.95	N 70°10'40" W
60	42.50	22°49'06"	16.93	16.81	S 77°38'01" W
61	72.50	22°49'06"	28.87	28.68	S 77°38'01" W
62	30.00	90°00'00"	47.12	42.43	S 44°02'34" W
63	1001.50	04°39'42"	81.49	81.46	S 87°44'57" E
64	1035.00	04°39'42"	84.21	84.19	S 87°44'57" E
65	30.00	89°07'22"	46.66	42.10	S 45°31'07" E
66	30.00	40°51'35"	21.39	20.94	S 21°23'13" E
67	100.00	51°38'01"	90.12	87.10	S 59°36'06" W
68	100.00	35°52'13"	62.61	61.59	S 73°01'19" W
69	30.00	40°55'01"	21.42	20.97	N 69°37'17" E

LINE TABLE

LINE	DIRECTION	DISTANCE
1	S 89°00'00" W	35.75
2	N 71°00'00" W	36.39
3	N 82°00'00" W	31.45
4	N 73°00'00" W	30.70
5	N 89°00'00" W	27.22
6	S 69°00'00" W	36.13
7	S 86°00'00" W	27.45
8	S 80°00'00" W	34.85
9	N 64°00'00" W	29.26
10	N 31°00'00" W	28.45
11	N 09°00'00" W	32.92
12	N 10°00'00" E	28.18
13	N 04°00'00" W	56.22
14	N 22°00'00" W	42.25
15	N 57°00'00" W	33.90
16	S 77°00'00" E	58.85
17	S 48°00'00" E	39.97
18	S 69°00'00" W	26.13
19	N 78°00'00" W	30.64
20	S 84°00'00" E	47.41
21	N 70°00'00" W	26.04
22	N 89°00'00" E	38.20
23	S 89°00'00" W	64.06
24	N 71°00'00" W	39.71
25	S 85°00'00" W	33.76
26	N 79°00'00" W	28.35
27	S 75°00'00" W	43.50
28	S 88°00'00" W	65.03
29	N 48°00'00" W	25.90
30	N 18°00'00" W	27.25
31	N 01°00'00" E	50.34
32	N 02°00'00" W	60.95
33	N 50°00'00" E	28.92
34	S 89°00'00" E	44.45
35	S 69°00'00" E	50.06
36	N 90°00'00" E	42.45
37	N 85°00'00" E	44.77
38	N 68°00'00" E	52.76
39	S 79°00'00" E	46.80
40	N 00°57'26" W	98.79
41	N 22°00'00" W	20.38
42	N 06°00'00" W	22.38
43	N 36°00'00" E	31.98
44	N 80°00'00" E	28.80
45	S 73°00'00" E	32.89
46	N 85°00'00" E	28.87
47	S 57°00'00" E	31.77
48	S 81°00'00" E	29.64
49	N 59°00'00" E	16.96
50	N 81°00'00" E	56.48
51	N 71°00'00" E	32.88
52	N 89°00'00" E	39.25