

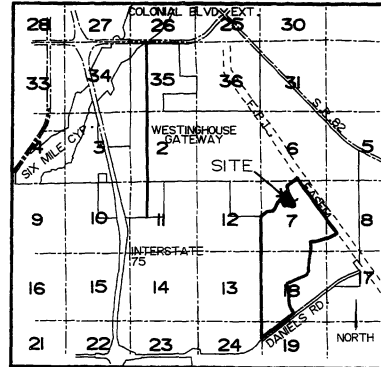
GATEWAY PHASE 4

PLAT BOOK 43 PAGE 67

PREPARED BY:
HOLE, MONTES AND ASSOCIATES, INC
6202-F PRESIDENTIAL CT. S.W.
FT. MYERS, FLA. 33919 (813) 481-7874

NOTICE:
LANDS DESCRIBED IN THIS PLAT ARE SUB-DIVIDED BY THE DEVELOPER WITHOUT THE ROADS AND DRAINAGE FACILITIES BEING SPECIFICALLY APPROVED OR ACCEPTED BY LEE COUNTY. ANY PURCHASER OF A LOT IN THIS SUBDIVISION IS ADVISED THAT HE MAY BE SUBJECT TO ASSESSMENT OR CALLED UPON TO BEAR A PORTION OF OR ALL OF THE EXPENSE OF CONSTRUCTION, MAINTENANCE OR IMPROVEMENT OF ROADS AND DRAINAGE FACILITIES WITHIN THE SUBDIVISION.

A SUBDIVISION LOCATED IN SECTION 7, T45S, R26E LEE COUNTY, FLORIDA



LOCATION MAP

NOTES:

- ALL DIMENSIONS ARE IN FEET AND DECIMALS THEREOF.
- ALL DIMENSIONS ON CURVES ARE ARC LENGTHS UNLESS OTHERWISE NOTED "L" = ARC.
- BASIS FOR BEARING IS THE SOUTH LINE OF THE SOUTHWEST 1/4 OF SECTION 18, TOWNSHIP 45 SOUTH, RANGE 26 EAST BEING S89°50'35"E.
- G.S.D.-D.E. AND G.S.D.-U.E. INDICATES GATEWAY SERVICES DISTRICT DRAINAGE EASEMENTS AND UTILITY EASEMENTS RESPECTFULLY.
- ALL CURVES INDICATED ARE CIRCULAR.
- INDICATES PERMANENT REFERENCE MONUMENT (P.R.M.)
- INDICATES PERMANENT CONTROL POINT (P.C.P.)
- D.E. = DRAINAGE EASEMENT
- U.E. = UTILITY EASEMENT
- A 6.0 FOOT UTILITY EASEMENT IS RESERVED ALONG EACH SIDE AND REAR LOT LINE AND A 10.0 FOOT UTILITY EASEMENT IS RESERVED ALONG THE FRONT LINE OF EACH LOT WITHIN BLOCKS "A", "B", "C", "D" & "D". SEE PLAT FOR ADDITIONAL EASEMENTS.
- (NR) INDICATES NON-RADIAL LINE.

APPROVAL

THIS PLAT ACCEPTED THIS 16TH DAY OF AUGUST A.D. 1989, IN OPEN MEETING OF THE BOARD OF COUNTY COMMISSIONERS OF LEE COUNTY, FLORIDA.

Charles Green
APPROVED: CHAIRMAN OF THE BOARD

Charlie Green
ATTEST: CLERK OF COURT

Ronald K. Brown
APPROVED: COUNTY ENGINEER

James J. Williams
APPROVED: COUNTY ATTORNEY

James J. Williams
APPROVED: DIRECTOR, DEPARTMENT OF COMMUNITY DEVELOPMENT

CERTIFICATION

I HEREBY CERTIFY THAT THE ATTACHED PLAT OF GATEWAY PHASE 4, LEE COUNTY, FLORIDA, HAS BEEN EXAMINED BY ME AND FROM MY EXAMINATION I FIND THAT SAID PLAT COMPLIES WITH THE REQUIREMENTS OF CHAPTER 177, LAWS OF FLORIDA. I FURTHER CERTIFY THAT THIS PLAT WAS FILED FOR RECORD AT 4:11 P.M., THIS 21ST DAY OF AUGUST A.D., 1989, AND DULY RECORDED IN PLAT BOOK 43 AT PAGES 67-68-73. PUBLIC RECORDS OF LEE COUNTY, FLORIDA.

Charlie Green
CLERK OF COURT

2709133

GATEWAY SERVICES DISTRICT

THIS PLAT APPROVED IN OPEN MEETING OF THE GATEWAY SERVICES DISTRICT ON THE 16TH DAY OF AUGUST, 1989. I HEREBY ACKNOWLEDGES ACCEPTANCE OF DRAINAGE DRAINAGE OF ALL LANDS CONTAINED WITHIN THIS PLAT.

Douglas G. Brown
WITNESS
DOUGLAS G. BROWN, PRESIDENT
GATEWAY SERVICES DISTRICT

Andre Patrone
WITNESS
ANDRE PATRONE, SECRETARY
GATEWAY SERVICES DISTRICT

SURVEYOR'S CERTIFICATION

I HEREBY CERTIFY THAT THE ATTACHED PLAT OF GATEWAY PHASE 4, LEE COUNTY, FLORIDA, IS A TRUE AND CORRECT REPRESENTATION OF THE HEREIN DESCRIBED LAND ACCORDING TO A RECENT SURVEY MADE AND PLATTED UNDER MY DIRECTION AND SUPERVISION AND THAT THE SURVEY DATA COMPLIES WITH ALL OF THE REQUIREMENTS OF CHAPTER 177, FLORIDA STATUTES. I FURTHER CERTIFY THAT THE PERMANENT REFERENCE MONUMENTS (P.R.M'S) HAVE BEEN PLACED AT THE LOCATIONS SHOWN ON THIS PLAT.

James J. Williams
NOTARY PUBLIC STATE OF FLORIDA AT LARGE

DEDICATION

KNOWN BY ALL MEN BY THESE PRESENTS THAT WESTINGHOUSE GATEWAY COMMUNITIES, INC., A FLORIDA CORPORATION BEING THE OWNER OF THE HEREIN DESCRIBED LANDS HAS CAUSED THIS PLAT OF GATEWAY PHASE 4 TO BE MADE AND DOES HEREBY MAKE THE FOLLOWING DEDICATIONS:

WESTINGHOUSE GATEWAY COMMUNITIES, INC., HEREBY DEDICATES: THE ROAD RIGHTS-OF-WAY OF MAHOGANY RUN, BENT PINE DRIVE, PERSIMMON COURT, TEAK CIRCLE AND WHITE PINE LANE (COLLECTIVELY REFERRED TO AS TRACT "A") TO THE GATEWAY GREENS COMMUNITY ASSOCIATION, INCORPORATED, FOR THE BENEFIT OF ITS PRESENT AND FUTURE MEMBERS, ITS SUCCESSORS AND ASSIGNS AND THEIR TENANTS, INVITEES, LICENSEES, MORTGAGEES, AND EMPLOYEES; RESERVING UNTO WESTINGHOUSE GATEWAY COMMUNITIES, INC. ITS SUCCESSORS, ASSIGNS, EMPLOYEES OF AND INVITEES A PERPETUAL RIGHT OF INGRESS AND EGRESS ON AND OVER SAID TRACT "A".

AN EASEMENT FOR DRAINAGE AND UTILITY PURPOSES ON, OVER AND UNDER TRACTS "A", "B", "C", AND "D" IS HEREBY GRANTED TO GOVERNMENTAL AGENCIES AND PUBLIC UTILITIES HAVING AUTHORITY TO PROVIDE FOR SUCH SERVICES.

GATEWAY BOULEVARD AND EAGLE POINTE DRIVE ARE HEREBY DEDICATED TO THE PUBLIC FOR RIGHT OF WAY, UTILITY AND DRAINAGE PURPOSES.

ALL UTILITY EASEMENTS SHOWN HEREON ARE FOR PURPOSES OF INSTALLATION, REPAIR AND MAINTENANCE OF WATER, SEWER, ELECTRIC AND TELEPHONE USE AND WESTINGHOUSE GATEWAY COMMUNITIES, INC. HEREBY RESERVES TO ITSELF, ITS SUCCESSORS AND ASSIGNS THE ADDITIONAL AND EXCLUSIVE USE OF SAID UTILITY EASEMENTS FOR CABLE TELEVISION PURPOSES.

THE LANDSCAPE TRANSITION YARD AND PRIVACY WALL EASEMENTS ARE HEREBY DEDICATED TO THE GATEWAY GREENS COMMUNITY ASSOCIATION.

DRAINAGE EASEMENTS SHOWN HEREON ARE DEDICATED TO THE GATEWAY SERVICES DISTRICT. OTHER DRAINAGE EASEMENTS GRANTED TO THE GATEWAY SERVICES DISTRICT AND PREVIOUSLY RECORDED ARE SHOWN FOR INFORMATION PURPOSES ONLY AND ARE NOT DEDICATED HEREBY.

IN WITNESS WHEREOF, WESTINGHOUSE GATEWAY COMMUNITIES, INC. HAS CAUSED THIS DEDICATION TO BE EXECUTED BY ITS DULY AUTHORIZED OFFICERS AND ITS CORPORATE SEAL TO BE AFFIXED HEREON THIS 17TH DAY OF JULY, 1989 A.D.

Jerry H. Schmoeyer
WITNESS AS TO BOTH

Daniel A. Lawrence
WITNESS AS TO BOTH

WESTINGHOUSE GATEWAY COMMUNITIES, INC.
BY *Jerry H. Schmoeyer*
JERRY H. SCHMOYER, VICE PRESIDENT

ATTEST: *Daniel A. Lawrence*
DANIEL A. LAWRENCE, SECRETARY

ACKNOWLEDGEMENT

STATE OF FLORIDA
COUNTY OF LEE

I HEREBY CERTIFY THAT ON THIS DAY PERSONALLY APPEARED BEFORE ME, JERRY H. SCHMOYER, VICE PRESIDENT AND DANIEL A. LAWRENCE, SECRETARY OF WESTINGHOUSE GATEWAY COMMUNITIES, INC., A FLORIDA CORPORATION, TO ME KNOWN TO BE THE PERSONS DESCRIBED IN AND WHO EXECUTED THE FOREGOING DEDICATION AND THEY ACKNOWLEDGED THE EXECUTION THEREOF TO BE THEIR OWN FREE ACT AND DEED AS SUCH OFFICERS FOR THE USE AND PURPOSES THEREIN MENTIONED. WITNESS MY HAND AND OFFICIAL SEAL AT FORT MYERS, SAID COUNTY AND STATE THIS 17TH DAY OF JULY, 1989 A.D.

Michael K. Jones
NOTARY PUBLIC STATE OF FLORIDA AT LARGE

MY COMMISSION EXPIRES: May 19, 1991

89 FOR GATEWAY BOULEVARD
3-R-89 FOR PARCEL 18 SUBDIVISION

GATEWAY PHASE 4

A SUBDIVISION LOCATED IN SECTION 7,
TOWNSHIP 45 S, RANGE 26 E
LEE COUNTY, FLORIDA

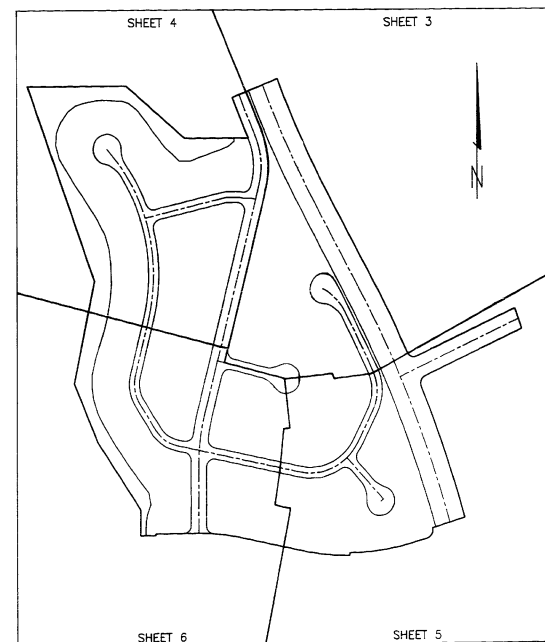
PREPARED BY:
HOLLE, MONTES AND ASSOCIATES, INC.
6202-F PRESIDENTIAL CT. S.W.
FT. MYERS, FLA. 33919
PHONE: (813) 481-7874

PROPERTY DESCRIPTION

A PARCEL OF LAND LOCATED IN SECTION 7, TOWNSHIP 45 SOUTH, RANGE 26 EAST, LEE COUNTY, FLORIDA, BEING MORE PARTICULARLY DESCRIBED AS FOLLOWS:

COMMENCE AT THE SOUTHEAST CORNER OF THE NORTHEAST 1/4 OF SECTION 7, TOWNSHIP 45 SOUTH, RANGE 26 EAST, LEE COUNTY, FLORIDA; THENCE RUN S. 89°28'04" W. ALONG THE SOUTH LINE OF THE NORTHEAST 1/4 OF SAID SECTION 7, FOR A DISTANCE OF 2238.80 FEET TO A POINT ON THE EASTERLY RIGHT-OF-WAY LINE OF GATEWAY BOULEVARD, AS SHOWN ON THE PLAT OF GATEWAY PHASE 1, RECORDED IN PLAT BOOK 40 AT PAGES 31 THROUGH 37 OF THE PUBLIC RECORDS OF LEE COUNTY, FLORIDA, SAID POINT BEING A POINT ON A NON-TANGENTIAL CIRCULAR CURVE CONCAVE TO THE SOUTHWEST, WHOSE RADIUS POINT BEARS S. 76°34'01" W. FOR A DISTANCE OF 4475.00 FEET THEREFROM; THENCE RUN NORTHWESTERLY ALONG THE ARC OF SAID CURVE TO THE LEFT, HAVING A RADIUS OF 4475.00 FEET, THROUGH A CENTRAL ANGLE OF 03°11'07", SUBTENDED BY A CHORD OF 248.76 FEET, AT A BEARING OF N. 15°01'32" W., FOR A DISTANCE OF 248.79 FEET; THENCE RUN S. 73°22'54" W. FOR A DISTANCE OF 15.00 FEET TO THE POINT OF BEGINNING OF THE HEREIN DESCRIBED PARCEL; THENCE RUN S. 73°22'54" W. FOR A DISTANCE OF 135.00 FEET, TO A POINT ON A CIRCULAR CURVE CONCAVE TO THE WEST, WHOSE RADIUS POINT BEARS S. 73°22'54" W., A DISTANCE OF 30.00 FEET THEREFROM; THENCE RUN SOUTHWESTERLY ALONG THE ARC OF SAID CURVE TO THE RIGHT, HAVING A RADIUS OF 30.00 FEET, THROUGH A CENTRAL ANGLE OF 91°04'02", SUBTENDED BY A CHORD OF 42.82 FEET, AT A BEARING OF S. 28°54'55" W., FOR A DISTANCE OF 47.88 FEET; TO THE END OF SAID CURVE; THENCE RUN S. 74°28'58" W. FOR A DISTANCE OF 69.25 FEET, TO THE BEGINNING OF A TANGENTIAL CIRCULAR CURVE CONCAVE TO THE NORTHWEST; THENCE RUN SOUTHWESTERLY ALONG THE ARC OF SAID CURVE TO THE RIGHT, HAVING A RADIUS OF 900.71 FEET, THROUGH A CENTRAL ANGLE OF 15°31'17", SUBTENDED BY A CHORD OF 243.25 FEET, AT A BEARING OF S. 82°12'35" W., FOR A DISTANCE OF 244.00 FEET; THENCE RUN S. 00°01'47" E. FOR A DISTANCE OF 10.00 FEET TO A POINT ON A CIRCULAR CURVE CONCAVE TO THE NORTH, WHOSE RADIUS POINT BEARS N. 00°01'47" W. FOR A DISTANCE OF 910.71 FEET THEREFROM; THENCE RUN WESTERLY ALONG THE ARC OF SAID CURVE TO THE RIGHT, HAVING A RADIUS OF 910.71 FEET, THROUGH A CENTRAL ANGLE OF 11°49'33", SUBTENDED BY A CHORD OF 187.64 FEET, AT A BEARING OF N. 84°07'00" W., FOR A DISTANCE OF 187.97 FEET, TO THE END OF SAID CURVE; THENCE RUN N. 78°12'14" W. FOR A DISTANCE OF 252.83 FEET TO THE BEGINNING OF A TANGENTIAL CIRCULAR CURVE CONCAVE TO THE SOUTH; THENCE RUN ALONG THE ARC OF SAID CURVE TO THE LEFT, HAVING A RADIUS OF 781.78 FEET, THROUGH A CENTRAL ANGLE OF 11°55'31", SUBTENDED BY A CHORD OF 162.42 FEET, AT A BEARING OF N. 84°10'00" W., FOR A DISTANCE OF 162.71 FEET, TO THE END OF SAID CURVE; THENCE RUN S. 69°52'15" W. FOR A DISTANCE OF 170.34 FEET; THENCE RUN S. 00°07'45" E. FOR A DISTANCE OF 6.50 FEET; THENCE RUN S. 89°52'15" W. FOR A DISTANCE OF 60.00 FEET; THENCE RUN N. 00°00'00" E. FOR A DISTANCE OF 95.57 FEET; THENCE RUN N. 34°00'00" W. FOR A DISTANCE OF 302.73 FEET; THENCE RUN N. 23°00'00" W. FOR A DISTANCE OF 235.00 FEET; THENCE RUN N. 12°00'00" E. FOR A DISTANCE OF 383.78 FEET; THENCE RUN N. 20°00'00" W. FOR A DISTANCE OF 762.50 FEET; THENCE RUN N. 90°00'00" E. FOR A DISTANCE OF 387.62 FEET; THENCE RUN S. 50°00'00" E. FOR A DISTANCE OF 300.00 FEET; THENCE RUN N. 90°00'00" E. FOR A DISTANCE OF 250.00 FEET TO A POINT ON A CIRCULAR CURVE CONCAVE TO THE NORTHEAST, WHOSE RADIUS POINT BEARS N. 68°14'47" E., FOR A DISTANCE OF 3730.00 FEET THEREFROM; THENCE RUN NORTHWESTERLY ALONG THE ARC OF SAID CURVE TO THE RIGHT, HAVING A RADIUS OF 3730.00 FEET, THROUGH A CENTRAL ANGLE OF 02°29'00", SUBTENDED BY A CHORD OF 161.66 FEET; AT A BEARING OF N. 22°30'43" W., FOR A DISTANCE OF 161.67 FEET; THENCE RUN N. 68°43'47" E. FOR A DISTANCE OF 190.00 FEET TO A POINT ON A CIRCULAR CURVE CONCAVE TO THE NORTHEAST, WHOSE RADIUS POINT BEARS N. 68°43'47" E. FOR A DISTANCE OF 3540.00 FEET THEREFROM; THENCE RUN SOUTHEASTERLY ALONG THE ARC OF SAID CURVE TO THE LEFT, HAVING A RADIUS OF 3540.00 FEET, THROUGH A CENTRAL ANGLE OF 07°36'06", SUBTENDED BY A CHORD OF 469.32 FEET, AT A BEARING OF S. 25°04'18" E., FOR A DISTANCE OF 469.66 FEET TO THE END OF SAID CURVE; THENCE RUN S. 28°52'18" E. FOR A DISTANCE OF 385.30 FEET TO THE BEGINNING OF A TANGENTIAL CIRCULAR CURVE CONCAVE TO THE SOUTHWEST; THENCE RUN SOUTHEASTERLY ALONG THE ARC OF SAID CURVE TO THE RIGHT, HAVING A RADIUS OF 4460.00 FEET, THROUGH A CENTRAL ANGLE OF 03°49'59", SUBTENDED BY A CHORD OF 226.32 FEET, AT A BEARING OF S. 26°57'19" E., FOR A DISTANCE OF 226.37 FEET TO A POINT OF REVERSE CURVE; CONCAVE TO THE NORTHEAST; THENCE RUN SOUTHEASTERLY ALONG THE ARC OF SAID CURVE TO THE LEFT, HAVING A RADIUS OF 30.00 FEET, THROUGH A CENTRAL ANGLE OF 89°08'24", SUBTENDED BY A CHORD OF 42.09 FEET, AT A BEARING OF S. 69°35'31" E., FOR A DISTANCE OF 46.86 FEET TO THE END OF SAID CURVE; THENCE RUN N. 65°51'17" E. FOR A DISTANCE OF 427.39 FEET; THENCE RUN S. 19°00'00" E. FOR A DISTANCE OF 80.32 FEET; THENCE RUN S. 65°11'17" W. FOR A DISTANCE OF 420.18 FEET, TO THE BEGINNING OF A TANGENTIAL CIRCULAR CURVE, CONCAVE TO THE SOUTHEAST; THENCE RUN SOUTHWESTERLY ALONG THE ARC OF SAID CURVE TO THE LEFT, HAVING A RADIUS OF 30.00 FEET, THROUGH A CENTRAL ANGLE OF 89°08'24", SUBTENDED BY A CHORD OF 42.09 FEET, AT A BEARING OF S. 21°18'05" W., FOR A DISTANCE OF 46.86 FEET, TO A POINT OF REVERSE CURVE, CONCAVE TO THE SOUTHWEST, WHOSE RADIUS POINT BEARS S. 89°44'52" W., FOR A DISTANCE OF 4460.00 FEET THEREFROM; THENCE RUN SOUTHEASTERLY ALONG THE ARC OF SAID CURVE TO THE LEFT, HAVING A RADIUS OF 4460.00 FEET, THROUGH A CENTRAL ANGLE OF 06°38'02", SUBTENDED BY A CHORD OF 516.10 FEET, AT A BEARING OF S. 19°58'07" E., FOR A DISTANCE OF 516.39 FEET TO THE POINT OF BEGINNING; CONTAINING 44.876 ACRES OF LAND, MORE OR LESS.

SUBJECT TO EASEMENTS, RESTRICTIONS AND RESERVATIONS OF RECORD.

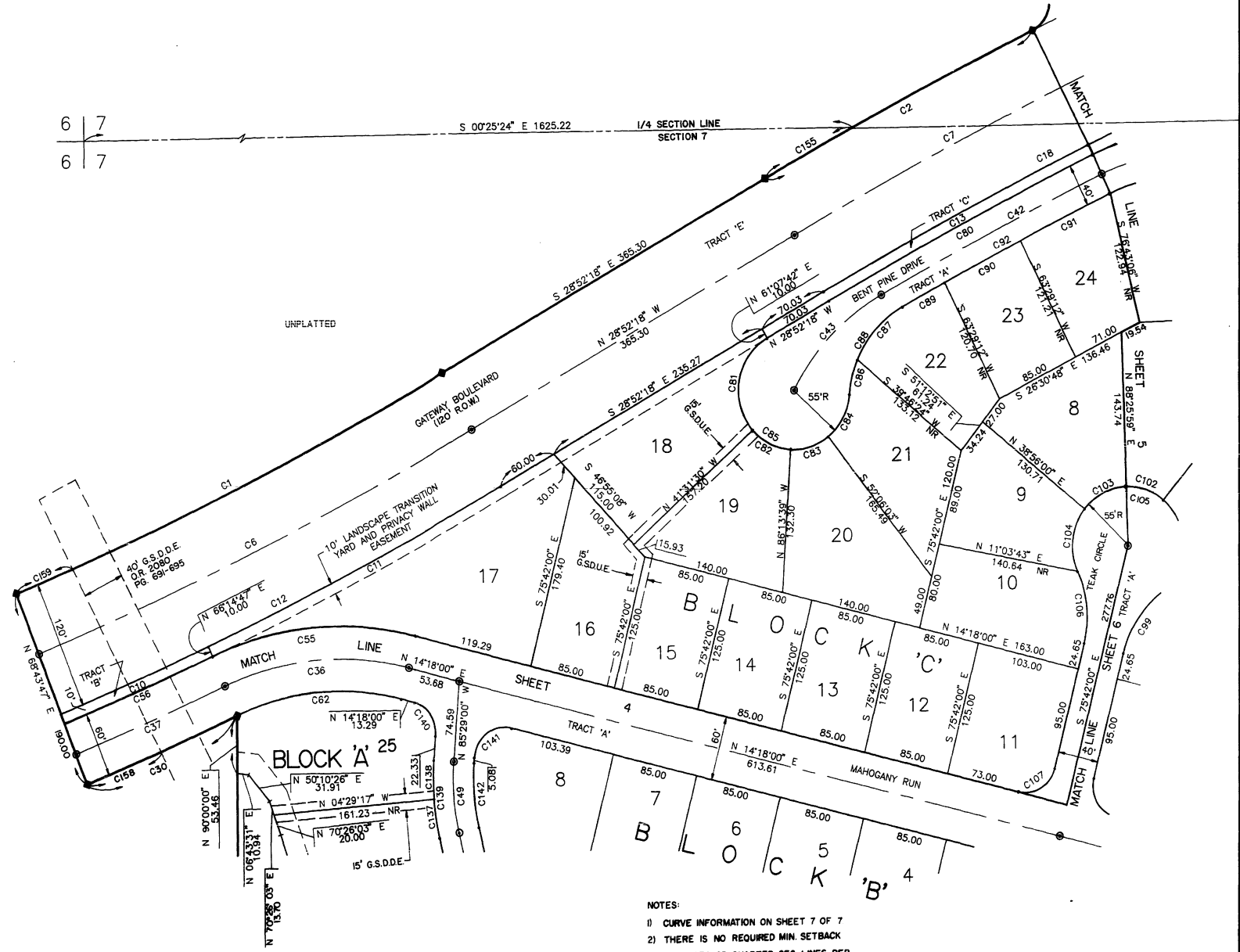
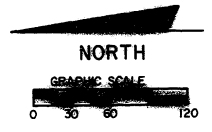


KEY MAP

GATEWAY PHASE 4

A SUBDIVISION LOCATED IN SECTION 7,
TOWNSHIP 45 S, RANGE 26 E
LEE COUNTY, FLORIDA

PREPARED BY:
HOLE, MONTES AND ASSOCIATES, INC.
6202-F PRESIDENTIAL CT. S.W.
FT. MYERS, FLA. 33919
PHONE: (813) 481-7874

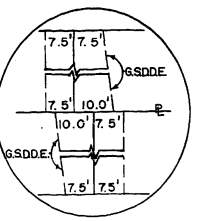
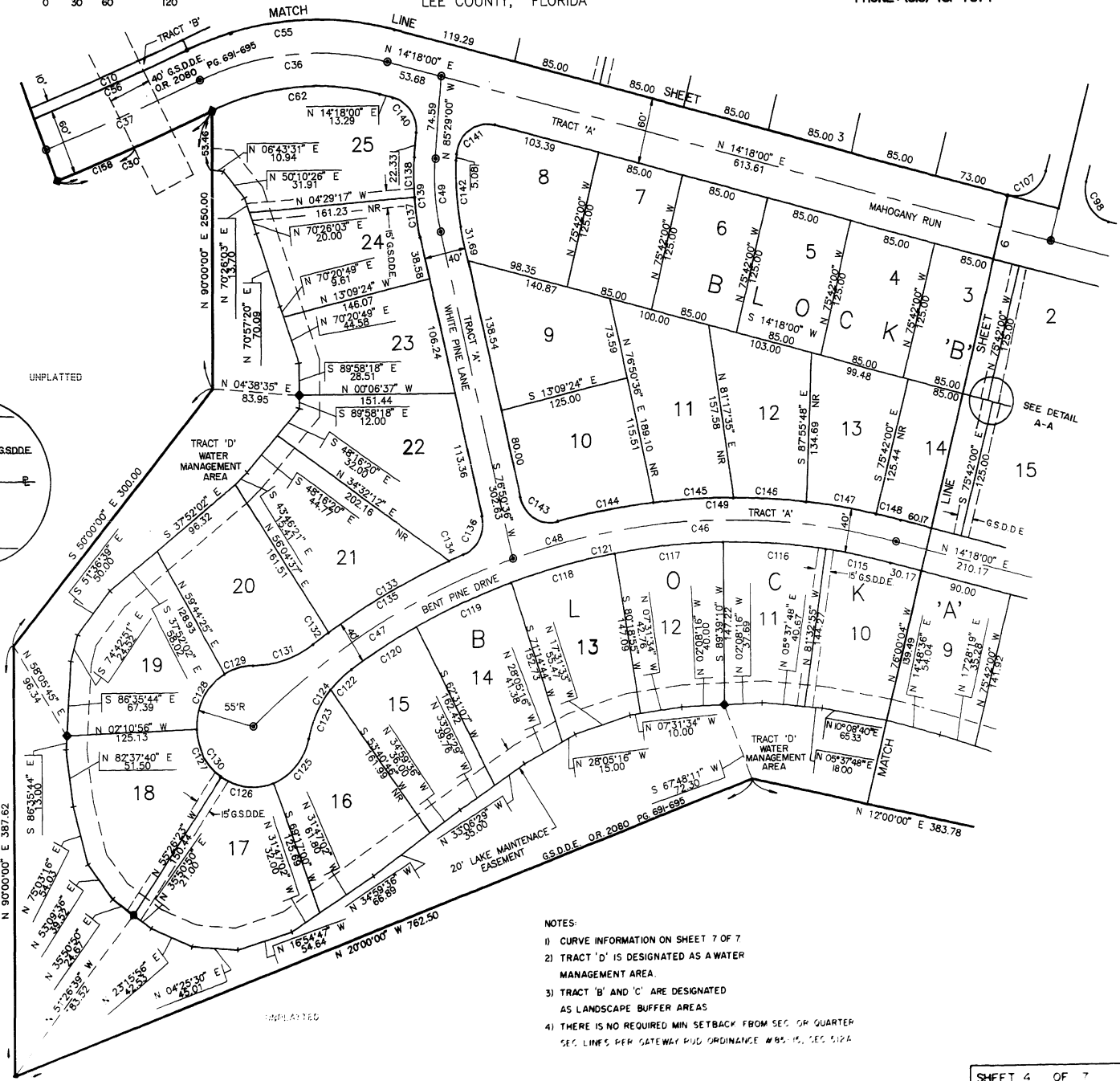
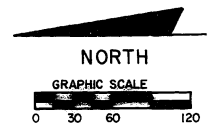


- NOTES:
- 1) CURVE INFORMATION ON SHEET 7 OF 7
 - 2) THERE IS NO REQUIRED MIN. SETBACK FROM SEC OR QUARTER SEC. LINES PER GATEWAY PUD ORDINANCE #85-15, SEC. 512-A
 - 3) TRACTS 'B' AND 'C' ARE DESIGNATED AS LANDSCAPE BUFFER AREAS
 - 4) TRACT 'D' IS DESIGNATED AS A WATER MANAGEMENT AREA

GATEWAY PHASE 4

A SUBDIVISION LOCATED IN SECTION 7,
TOWNSHIP 45 S, RANGE 26 E
LEE COUNTY, FLORIDA

PREPARED BY:
HOLE, MONTES AND ASSOCIATES, INC.
6202-F PRESIDENTIAL CT. S.W.
FT. MYERS, FLA. 33909
PHONE: (813) 481-7874



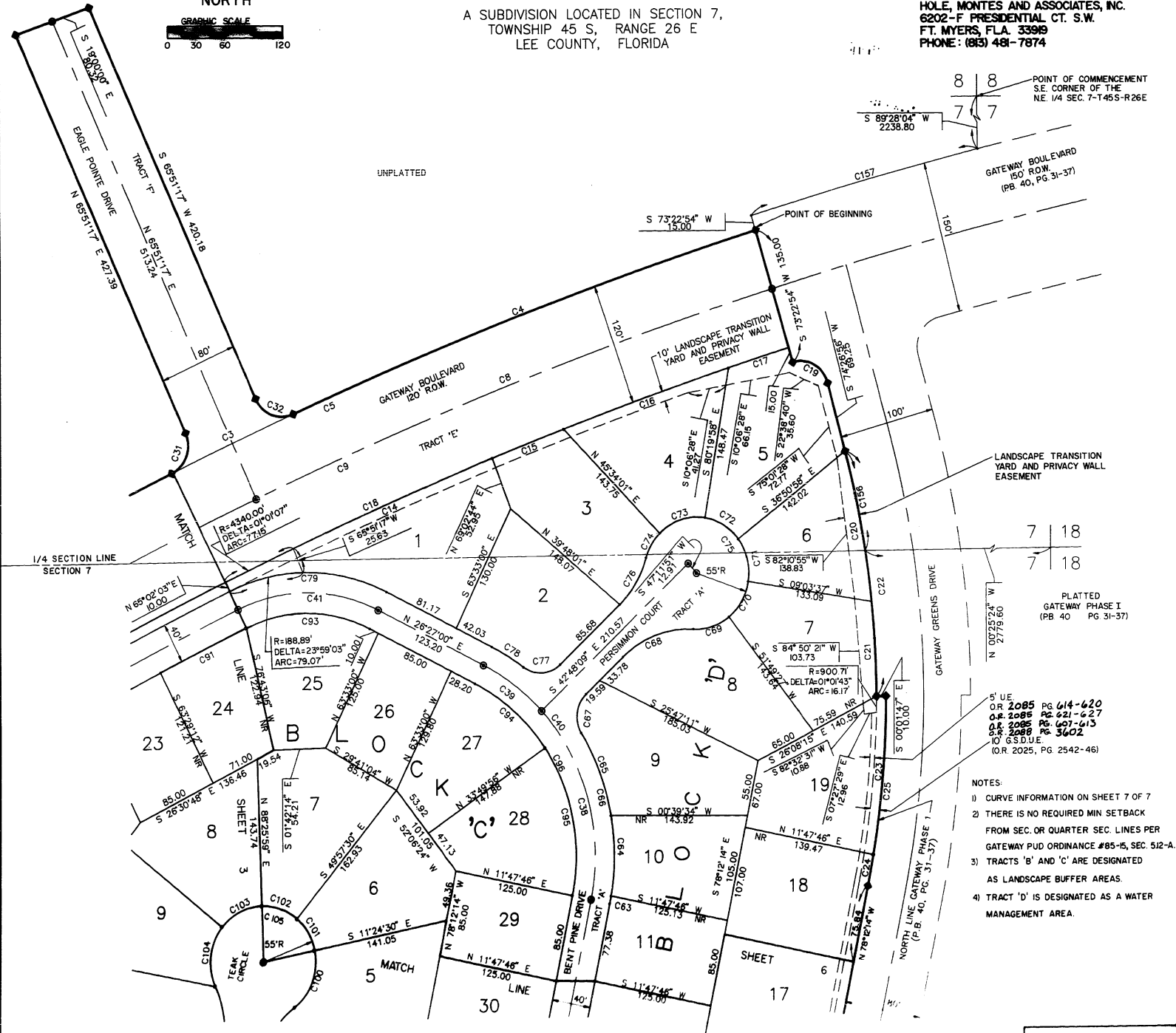
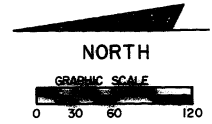
DETAIL A-A

- NOTES:
- 1) CURVE INFORMATION ON SHEET 7 OF 7
 - 2) TRACT 'D' IS DESIGNATED AS A WATER MANAGEMENT AREA.
 - 3) TRACT 'B' AND 'C' ARE DESIGNATED AS LANDSCAPE BUFFER AREAS
 - 4) THERE IS NO REQUIRED MIN SETBACK FROM SEC OR QUARTER SEC LINES PER GATEWAY RUD ORDINANCE #85-15, SEC 512A

GATEWAY PHASE 4

PREPARED BY:
HOLE, MONTES AND ASSOCIATES, INC.
6202-F PRESIDENTIAL CT. S.W.
FT. MYERS, FLA. 33919
PHONE: (813) 481-7874

A SUBDIVISION LOCATED IN SECTION 7,
TOWNSHIP 45 S, RANGE 26 E
LEE COUNTY, FLORIDA



7 | 18
7 | 18
PLATTED
GATEWAY PHASE I
(PB 40 PG 31-37)

5' UE
O.R. 2085 PG 614-620
O.R. 2085 PG 621-627
O.R. 2085 PG 607-613
S.R. 2089 PG 3602
10' G.S.D.U.E.
(O.R. 2025, PG 2542-46)

- NOTES:
- 1) CURVE INFORMATION ON SHEET 7 OF 7
 - 2) THERE IS NO REQUIRED MIN SETBACK FROM SEC. OR QUARTER SEC. LINES PER GATEWAY PUD ORDINANCE #85-15, SEC. 512-A.
 - 3) TRACTS 'B' AND 'C' ARE DESIGNATED AS LANDSCAPE BUFFER AREAS.
 - 4) TRACT 'D' IS DESIGNATED AS A WATER MANAGEMENT AREA.

GATEWAY PHASE 4

A PARCEL OF LAND LOCATED IN SECTION 7,
TOWNSHIP 45 S, RANGE 26 E
LEE COUNTY, FLORIDA

PREPARED BY:
HOLE, MONTES AND ASSOCIATES, INC.
6202-F PRESIDENTIAL CT. S.W.
FT. MYERS, FLA. 33919
PHONE: (813) 481-7874

CURVE TABLE					
CURVE NUMBER	RADIUS	DELTA	ARC LENGTH	CHORD LENGTH	CHORD BEARING
1	3540.00	0736°06"	469.66	469.32	S 25°04'16" E
2	4460.00	0349°59"	298.37	298.32	S 26°57'19" E
3	4460.00	0147°12"	139.08	139.07	S 24°08'43" E
4	4460.00	0638°02"	516.39	516.10	S 19°56'07" E
5	4460.00	1215°13"	953.84	952.02	S 22°44'42" E
6	3600.00	0736°06"	477.63	477.27	S 25°04'16" E
7	4400.00	0443°35"	362.96	362.86	S 26°30'31" E
8	4400.00	0731°38"	578.04	577.62	S 20°22'55" E
9	4400.00	1215°13"	941.00	939.21	S 22°44'42" E
10	3660.00	0229°00"	158.64	158.83	S 22°30'43" E
11	3660.00	0507°06"	326.95	326.84	S 28°18'46" E
12	3660.00	0736°06"	485.59	485.23	S 25°04'16" E
13	4340.00	0354°21"	295.86	295.80	S 26°55'08" E
14	4340.00	04°00'41"	303.85	303.78	S 22°57'37" E
15	4340.00	01°02'55"	79.43	79.43	S 20°25'49" E
16	4340.00	0224°56"	182.97	182.96	S 18°41'53" E
17	4340.00	0052°20"	66.06	66.06	S 17°03'16" E
18	4340.00	1215°13"	928.17	926.40	S 22°44'42" E
19	30.00	91°04'02"	47.68	42.82	S 28°54'55" W
20	900.71	0934°46"	150.59	150.42	S 79°14'19" W
21	900.71	0556°31"	93.36	93.36	S 86°59'58" W
22	900.71	1531°17"	244.00	243.25	S 82°12'35" W
23	910.71	0951°53"	158.80	158.61	N 85°06'50" W
24	910.71	0157°40"	31.17	31.17	N 79°11'04" W
25	910.71	1149°33"	187.97	187.84	N 84°07'00" W
26	781.76	0217°56"	31.37	31.37	N 79°21'13" W
27	781.76	0523°15"	73.51	73.48	N 83°11'48" W
28	781.76	0414°20"	57.83	57.82	N 88°00'35" W
29	781.76	1155°31"	162.71	162.42	N 84°10'00" W
30	3730.00	0229°00"	161.67	161.66	N 22°30'43" W
31	30.00	89°06'24"	46.66	42.09	S 89°35'31" E
32	30.00	89°06'24"	46.66	42.09	S 21°18'05" W
33	800.00	0417°59"	80.04	80.02	N 02°01'15" E
34	800.00	1007°46"	141.43	141.25	N 08°14'07" E
35	800.00	1425°45"	201.47	200.94	N 07°05'08" E
36	281.00	38°03'03"	186.61	183.20	N 04°43'31" W
37	3700.00	0229°00"	160.37	160.36	N 22°30'43" W
38	210.00	54°35'54"	200.11	192.63	N 74°29'48" E
39	210.00	20°44'52"	76.05	75.63	N 36°49'26" E
40	210.00	75°20'46"	276.16	256.68	N 64°07'23" E
41	168.89	51°24'57"	151.56	146.52	N 00°44'31" E
42	4310.00	0316°03"	245.80	245.77	N 26°35'59" W
43	210.00	34°04'11"	123.04	123.04	N 45°16'06" W
44	130.00	45°16'14"	102.72	100.06	N 55°34'07" W
45	130.00	47°14'00"	107.17	104.16	N 59°19'00" W
46	675.00	32°19'52"	380.89	375.86	N 01°51'56" W
47	675.00	26°08'88"	295.53	293.18	N 30°34'26" W
48	675.00	57°25'00"	676.42	648.47	N 14°24'30" W
49	215.00	174°02'44"	66.32	66.06	N 85°40'48" E
50	30.00	89°45'40"	44.90	40.83	N 43°00'35" W
51	30.00	101°55'31"	53.37	46.60	N 50°50'00" E
52	770.00	0559°56"	80.62	80.58	N 10°26'36" E
53	770.00	0051°26"	11.52	11.52	N 13°52'17" E
54	770.00	0651°22"	92.08	92.08	N 10°52'19" E
55	311.00	36°03'03"	206.54	202.76	N 04°43'32" W
56	3670.00	0229°00"	159.07	159.06	N 22°30'43" W
57	30.00	90°00'00"	47.12	42.43	N 44°52'15" E
58	830.00	0127°49"	21.20	21.20	N 00°36'09" E
59	830.00	04°19'25"	62.63	62.62	N 10°12'50" E
60	830.00	0155°28"	27.88	27.88	N 13°20'16" E
61	830.00	0614°53"	90.51	90.46	N 11°10'34" E
62	251.00	38°03'02"	166.69	163.64	N 04°43'31" W
63	230.00	0153°53"	7.62	7.62	S 79°09'11" E
64	230.00	1944°33"	79.25	78.86	S 89°58'24" E
65	230.00	2152°13"	87.79	87.26	N 69°13'13" E
66	230.00	4330°39"	174.66	170.50	N 80°02'26" E
67	30.00	78°54'45"	41.32	38.13	S 82°15'31" E
68	100.00	46°17'58"	80.81	78.63	S 19°39'10" E
69	55.00	41°40'22"	40.00	39.13	S 17°20'22" E
70	55.00	4245°50"	41.05	40.10	S 59°33'28" E
71	55.00	4854°35"	44.07	42.90	N 76°08'20" E
72	55.00	4329°01"	41.74	40.75	N 31°24'32" E
73	55.00	54°08'01"	51.93	50.02	N 17°22'59" W
74	55.00	29°19'57"	28.16	27.85	N 59°05'58" W
75	55.00	25715°46"	246.95	85.93	N 54°51'57" E
76	100.00	3057°47"	54.04	53.39	N 88°17'03" W
77	30.00	78°54'44"	41.32	38.13	N 03°20'45" W
78	230.00	0939°36"	38.78	38.73	N 11°16'48" E
79	230.00	1124°47"	163.81	163.81	N 03°44'31" E
80	4375.00	1014°02"	291.18	291.17	N 26°35'08" W

CURVE TABLE					
CURVE NUMBER	RADIUS	DELTA	ARC LENGTH	CHORD LENGTH	CHORD BEARING
81	55.00	102°39'11"	98.54	85.88	N 80°11'54" W
82	55.00	44°42'10"	42.91	41.83	S 26°07'25" W
83	55.00	41°40'17"	40.00	39.13	S 17°03'48" E
84	55.00	47°31'50"	45.63	44.33	S 61°39'52" E
85	55.00	236°33'28"	227.08	96.87	S 32°50'58" W
86	100.00	18°53'11"	32.96	32.81	S 75°59'11" E
87	100.00	38°28'57"	67.17	65.91	S 47°18'07" E
88	100.00	57°22'08"	100.13	96.00	S 56°44'42" E
89	4290.00	0038°07"	47.57	47.57	S 27°44'35" E
90	4290.00	01°08'07"	85.00	85.00	S 26°51'28" E
91	4290.00	0119°27"	99.15	99.15	S 25°37'41" E
92	4290.00	03°05'41"	231.72	231.89	S 26°30'48" E
93	148.89	51°24'57"	133.61	129.17	S 00°44'31" W
94	190.00	29°33'11"	98.00	96.92	S 41°13'36" W
95	190.00	45°47'35"	151.86	147.85	S 78°53'58" W
96	190.00	75°20'46"	249.86	232.24	S 64°07'23" W
97	30.00	85°38'52"	44.85	40.78	N 35°22'48" W
98	30.00	90°00'00"	47.12	42.43	N 59°18'00" E
99	100.00	39°18'05"	68.54	67.20	S 56°03'58" E
100	55.00	64°58'35"	62.37	59.08	S 68°55'13" E
101	55.00	35°42'59"	37.61	36.31	N 59°19'00" E
102	55.00	41°38'52"	39.94	38.07	N 19°14'15" E
103	55.00	49°29'59"	47.52	46.05	N 28°19'01" W
104	55.00	63°54'05"	61.34	58.21	N 83°01'03" W
105	55.00	258°32'10"	248.18	85.16	N 14°18'00" E
106	100.00	39°18'05"	68.54	67.20	S 84°39'58" W
107	30.00	90°00'00"	47.12	42.43	N 30°42'00" W
108	30.00	79°32'18"	41.65	38.38	N 38°26'05" W
109	150.00	17°31'21"	45.88	45.70	N 69°26'34" W
110	150.00	27°44'33"	72.84	71.94	N 45°48'26" W
111	150.00	45°18'14"	115.46	115.46	N 55°34'07" W
112	150.00	221°44'41"	58.24	57.87	N 21°48'40" W
113	150.00	24°59'19"	65.42	64.90	N 01°48'20" E
114	150.00	47°14'00"	123.66	120.18	N 09°19'00" W
115	655.00	05°50'55"	66.86	66.83	N 11°22'32" E
116	655.00	08°47'55"	100.58	100.48	N 04°03'07" E
117	655.00	09°20'15"	106.75	106.63	N 05°00'58" W
118	655.00	09°04'11"	103.68	103.58	N 14°13'11" W
119	655.00	08°43'37"	99.77	99.67	N 23°07'05" W
120	655.00	06°26'30"	73.64	73.60	N 30°42'08" W
121	655.00	48°13'23"	551.28	535.15	N 08°48'41" W
122	100.00	15°42'24"	27.62	27.53	N 41°50'05" W
123	100.00	28°15'59"	49.33	48.84	N 63°52'46" W
124	100.00	44°05'23"	76.95	75.07	N 55°58'04" W
125	55.00	57°17'46"	55.00	52.74	N 49°21'53" W
126	55.00	55°16'37"	53.06	51.03	N 06°55'18" E
127	55.00	53°15'28"	51.13	49.30	N 61°11'21" E
128	55.00	61°55'20"	59.44	56.59	N 61°13'16" E
129	55.00	30°24'28"	29.19	28.85	S 15°03'21" E
130	55.00	258°09'39"	247.82	85.39	N 51°04'03" E
131	100.00	35°35'08"	62.11	61.11	S 17°38'41" E
132	695.00	01°30'52"	18.37	18.37	S 34°40'49" E
133	695.00	11°00'51"	133.60	133.40	S 28°24'57" E
134	695.00	01°14'12"	15.00	15.00	S 22°17'26" E
135	695.00	13°45'55"	166.97	166.57	S 28°33'18" E
136	30.00	81°29'04"	42.67	39.16	S 62°24'52" E
137	235.00	08°52'34"	36.37	36.37	N 81°16'53" E
138	235.00	08°47'50"	36.08	36.05	N 89°52'55" E
139	235.00	17°40'24"	72.49	72.20	N 85°40'48" E
140	30.00	80°13'00"	42.00	38.65	N 54°24'30" E
141	30.00	99°47'00"	52.25	45.89	N 35°35'30" W
142	195.00	174°02'44"	60.15	59.91	N 85°40'48" W
143	30.00	90°34'53"	47.43	42.64	S 31°33'09" W
144	695.00	07°49'35"	94.93	94.86	S 09°49'30" E
145	695.00	06°25'02"	77.84	77.80	S 02°42'12" E
146	695.00	05°52'25"	71.25	71.22	S 03°26'31" W
147	695.00	05°52'25"	71.25	71.22	S 09°18'57" W
148	695.00	02°02'50"	24.83	24.83	S 13°16'35" W
149	695.00	28°02'17"	340.10	336.72	S 00°18'51" W
150	110.00	27°49'06"	53.41	52.88	S 00°23'27" W
151	110.00	19°24'54"	37.27	37.10	S 23°13'33" W
152	110.00	47°14'00"	90.88	88.14	S 09°19'00" W
153	110.00	45°18'14"	86.81	84.67	S 55°34'07" E
154	30.00	93°44'38"	49.08	43.79	S 54°55'27" E
155	4460.00	0116°25"	99.14	99.14	S 28°14'06" E
156	900.71	0621°55"	100.00	100.01	N 77°37'54" E
157	4475.00	0211°07"	248.18	248.18	N 10°01'17" W
158	4475.00	0211°07"	18.11	18.11	N 27°22'55" W
159	4475.00	0211°07"	15.81	15.81	N 77°43'10" W