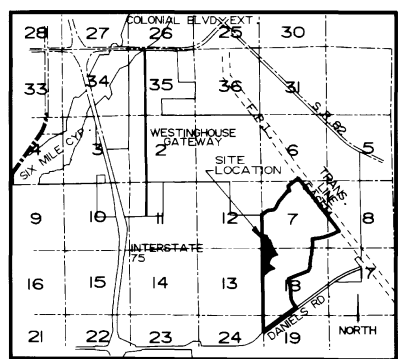


GATEWAY PHASE 9

NOTICE:
 LANDS DESCRIBED IN THIS PLAT ARE SUB-DIVIDED BY THE DEVELOPER WITHOUT THE ROADS AND DRAINAGE FACILITIES BEING SPECIFICALLY APPROVED OR ACCEPTED BY LEE COUNTY. ANY PURCHASER OF A LOT IN THIS SUBDIVISION IS ADVISED THAT HE MAY BE SUBJECT TO ASSESSMENT OR CALLED UPON TO BEAR A PORTION OF OR ALL OF THE EXPENSE OF CONSTRUCTION, MAINTENANCE OR IMPROVEMENT OF ROADS AND DRAINAGE FACILITIES WITHIN THE SUBDIVISION.

A SUBDIVISION LOCATED IN SECTIONS 7 AND 18 TOWNSHIP 45 SOUTH, RANGE 26 EAST LEE COUNTY, FLORIDA



LOCATION MAP

PREPARED BY:
 HOLE, MONTES AND ASSOCIATES, INC
 6202-F PRESIDENTIAL CT. S.W.
 FT. MYERS, FLA. 33919 (813) 481-7874

DEDICATION

KNOWN BY ALL MEN BY THESE PRESENTS THAT WESTINGHOUSE GATEWAY COMMUNITIES, INC., A FLORIDA CORPORATION, BEING THE OWNER OF THE HEREIN DESCRIBED LANDS HAS CAUSED THIS PLAT TO BE MADE AND SUCH LANDS TO BE SUBDIVIDED AS SHOWN HEREON; SAID PLAT TO BE KNOWN AS GATEWAY PHASE 9 AND DOES HEREBY MAKE THE FOLLOWING DEDICATIONS:

THE ROAD RIGHT-OF-WAY OF WESTLINKS DRIVE, TRACT "C" TO THE GATEWAY GREENS COMMUNITY ASSOCIATION, INC., FOR THE BENEFIT OF ITS PRESENT AND FUTURE MEMBERS, ITS SUCCESSORS AND ITS ASSIGNS, AND THEIR TENANTS, INVITEES, LICENSEES, MORTGAGEES, AND EMPLOYEES; RESERVING UNTO WESTINGHOUSE GATEWAY COMMUNITIES, INC. ITS SUCCESSORS, ITS ASSIGNS, EMPLOYEES OF AND INVITEES A PERPETUAL RIGHT FOR INGRESS AND EGRESS ON AND OVER SAID TRACT "C".

THE ROAD RIGHTS-OF-WAY OF FAIRWAY ISLES DRIVE AND WEDGE DRIVE (HEREINAFTER COLLECTIVELY REFERRED TO AS TRACT "G") TO THE GATEWAY GREENS COMMUNITY ASSOCIATION, INC. FOR THE BENEFIT OF ITS PRESENT AND FUTURE MEMBERS, ITS SUCCESSORS AND ITS ASSIGNS AND THEIR TENANTS, INVITEES, LICENSEES, MORTGAGEES, AND EMPLOYEES.

AN EASEMENT FOR DRAINAGE AND UTILITY PURPOSES ON, OVER AND UNDER TRACTS "B", "C" AND "G" AND ALONG THE WESTERLY TEN (10) FEET OF TRACTS "L", "M" AND ALONG THE WESTERLY FIFTEEN (15) FEET OF TRACTS "J" & "K" IS HEREBY GRANTED TO GOVERNMENTAL AGENCIES AND PUBLIC UTILITIES HAVING THE AUTHORITY TO PROVIDE FOR SUCH SERVICES.

ALL UTILITY EASEMENTS SHOWN HEREON ARE FOR PURPOSES OF INSTALLATION, REPAIR AND MAINTENANCE OF WATER, SEWER, ELECTRIC AND TELEPHONE USE AND WESTINGHOUSE GATEWAY COMMUNITIES, INC. HEREBY RESERVES TO GATEWAY / JONES COMMUNICATIONS, LTD. ITS SUCCESSORS AND ASSIGNS THE ADDITIONAL AND EXCLUSIVE USE OF SAID UTILITY EASEMENTS FOR CABLE TELEVISION PURPOSES.

DRAINAGE EASEMENTS SHOWN HEREON ARE DEDICATED TO THE GATEWAY SERVICES DISTRICT. OTHER DRAINAGE EASEMENTS TO THE GATEWAY SERVICES DISTRICT AND PREVIOUSLY RECORDED ARE SHOWN FOR INFORMATION PURPOSES ONLY AND ARE NOT DEDICATED HEREBY.

IN WITNESS WHEREOF, WESTINGHOUSE GATEWAY COMMUNITIES, INC. HAS CAUSED THIS DEDICATION TO BE EXECUTED BY ITS DULY AUTHORIZED OFFICERS AND ITS CORPORATE SEAL TO BE AFFIXED HEREON THIS 26th DAY OF SEPTEMBER, 1990 A.D.

WESTINGHOUSE GATEWAY COMMUNITIES, INC.
 BY: Byron R. Koste
 BYRON R. KOSTE, PRESIDENT
 ATTEST: Daniel A. Lawrence
 DANIEL A. LAWRENCE, SECRETARY

David W. Caldwell
 WITNESS AS TO BOTH
Richard A. Lawrence
 WITNESS AS TO BOTH

APPROVAL

THIS PLAT ACCEPTED THIS 31st DAY OF OCTOBER A.D. 1990, IN OPEN MEETING OF THE BOARD OF COUNTY COMMISSIONERS OF LEE COUNTY, FLORIDA.

APPROVED: Ray G. Smith CHAIRMAN OF THE BOARD
 ATTEST: Charlie Green CLERK OF COURT
 APPROVED: Saul J. Bangs DIRECTOR, DIVISION OF DEVELOPMENT REVIEW
 APPROVED: Jose W. Melillo COUNTY ATTORNEY
 APPROVED: William H. Roberts DIRECTOR, DEPARTMENT OF COMMUNITY DEVELOPMENT

CERTIFICATION 2933219

I HEREBY CERTIFY THAT THE ATTACHED PLAT OF GATEWAY PHASE 9, A SUBDIVISION LOCATED IN SECTIONS 7 AND 18, T45S, R26E, LEE COUNTY, FLORIDA, HAS BEEN EXAMINED BY ME AND FROM MY EXAMINATION I FIND THAT SAID PLAT COMPLIES WITH THE REQUIREMENTS OF CHAPTER 177, LAWS OF FLORIDA. I FURTHER CERTIFY THAT THIS PLAT WAS FILED FOR RECORD AT 3:36 P.M., THIS 25th DAY OF NOVEMBER A.D., 1990, AND DULY RECORDED IN PLAT BOOK 47 AT PAGES 10 THRU 20 PUBLIC RECORDS OF LEE COUNTY, FLORIDA.

Charlie Green
 CLERK OF COURT

NOTES:

- ALL DIMENSIONS ARE IN FEET AND DECIMALS THEREOF.
- ALL DIMENSIONS ON CURVES ARE ARC LENGTHS UNLESS OTHERWISE NOTED "L" = ARC.
- BASIS FOR BEARING IS THE WEST LINE OF THE SOUTHWEST 1/4 OF SECTION 7, TOWNSHIP 45 SOUTH, RANGE 26 EAST BEING N00°57'26"W.
- G.S.D.D.E. AND G.S.D.U.E. INDICATES GATEWAY SERVICES DISTRICT DRAINAGE EASEMENTS AND UTILITY EASEMENTS RESPECTFULLY.
- ALL CURVES INDICATED ARE CIRCULAR.
- INDICATES PERMANENT REFERENCE MONUMENT (P.R.M.)
- INDICATES PERMANENT CONTROL POINT (P.C.P.)
- D.E. = DRAINAGE EASEMENT
- U.E. = UTILITY EASEMENT
- A 6.0 FOOT UTILITY EASEMENT IS RESERVED ALONG EACH SIDE AND REAR LOT LINE AND A 10.0 FOOT UTILITY EASEMENT IS RESERVED ALONG THE FRONT LINE OF EACH LOT. SEE PLAT FOR ADDITIONAL EASEMENTS.
- (NR) INDICATES NON-RADIAL LINE.

GATEWAY SERVICES DISTRICT

THIS PLAT APPROVED IN OPEN MEETING OF THE GATEWAY SERVICES DISTRICT THIS 10th DAY OF SEPTEMBER, 1990. THE DISTRICT HEREBY ACKNOWLEDGES ACCEPTANCE OF DRAINAGE EASEMENTS AND DRAINAGE OF ALL LANDS CONTAINED WITHIN THIS PLAT.

WITNESS: David W. Caldwell
 DOUGLAS S. BROWN, PRESIDENT
 GATEWAY SERVICES DISTRICT
Diana White
 ANDRE PATRONE, SECRETARY
 GATEWAY SERVICES DISTRICT

SURVEYOR'S CERTIFICATION

I HEREBY CERTIFY THAT THE ATTACHED PLAT OF GATEWAY PHASE 9, A SUBDIVISION LOCATED IN SECTIONS 7 AND 18, T45S, R26E, LEE COUNTY, FLORIDA, IS A TRUE AND CORRECT REPRESENTATION OF THE HEREIN DESCRIBED LAND ACCORDING TO A RECENT SURVEY MADE AND PLATTED UNDER MY DIRECTION AND SUPERVISION AND THAT THE SURVEY DATA COMPLIES WITH ALL OF THE REQUIREMENTS OF CHAPTER 177, FLORIDA STATUTES. I FURTHER CERTIFY THAT THE PERMANENT REFERENCE MONUMENTS (P.R.M'S) HAVE BEEN PLACED AT THE LOCATIONS SHOWN ON THIS PLAT.

Thomas Jackson Garris
 THOMAS JACKSON GARRIS
 PROFESSIONAL LAND SURVEYOR
 FLORIDA CERTIFICATE NUMBER 3741
 28th DAY OF SEPTEMBER 1990

NOTICE

THERE MAY BE ADDITIONAL RESTRICTIONS THAT ARE NOT RECORDED ON THIS PLAT THAT MAY BE FOUND IN THE PUBLIC RECORDS OF THIS COUNTY.

ACKNOWLEDGEMENT

STATE OF FLORIDA
 COUNTY OF LEE

I HEREBY CERTIFY THAT ON THIS DAY PERSONALLY APPEARED BEFORE ME, BYRON R. KOSTE, PRESIDENT AND DANIEL A. LAWRENCE, SECRETARY OF WESTINGHOUSE GATEWAY COMMUNITIES, INC., A FLORIDA CORPORATION, TO ME KNOWN TO BE THE PERSONS DESCRIBED IN AND WHO EXECUTED THE FOREGOING DEDICATION AND THEY ACKNOWLEDGED THE EXECUTION THEREOF TO BE THEIR OWN FREE ACT AND DEED AS SUCH OFFICERS FOR THE USE AND PURPOSES THEREIN MENTIONED. WITNESS MY HAND AND OFFICIAL SEAL AT FORT MYERS, SAID COUNTY AND STATE THIS 26th DAY OF SEPTEMBER, 1990 A.D.

Man K. Lane
 NOTARY PUBLIC, STATE OF FLORIDA AT LARGE
 MY COMMISSION EXPIRES: MAY 19, 1991

D.O. 5-2-90
 D.O. 5-9-90
 WESTLINKS
 PARCEL 5A

GATEWAY PHASE 9
A SUBDIVISION LOCATED IN
SECTION 7 & 18, T45S, R26E,
LEE COUNTY, FLORIDA

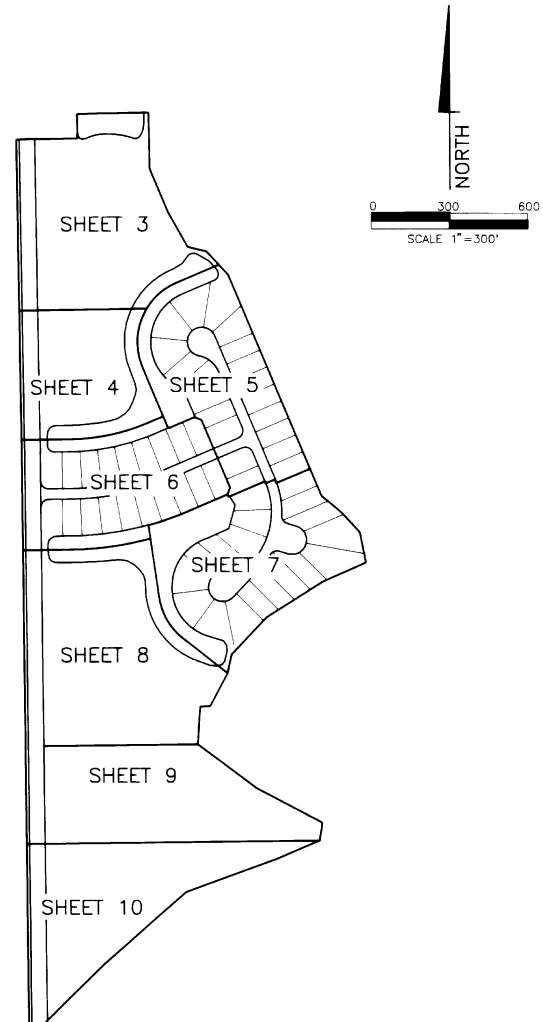
HOLE, MONTES AND ASSOCIATES
CONSULTING ENGINEERS AND SURVEYORS
6202F PRESIDENTIAL COURT
FORT MYERS, FLORIDA 33919
(813) 481-7874

PROPERTY DESCRIPTION

A PARCEL OF LAND LOCATED IN A PORTION OF SECTIONS 7 AND 18, TOWNSHIP 45 SOUTH, RANGE 26 EAST, LEE COUNTY, FLORIDA, BEING MORE PARTICULARLY DESCRIBED AS FOLLOWS:

BEGIN AT THE SOUTHWEST CORNER OF SECTION 7, TOWNSHIP 45 SOUTH, RANGE 26 EAST, LEE COUNTY, FLORIDA; THENCE RUN N. 00°57'26" W. ALONG THE WEST LINE OF THE SOUTHWEST 1/4 OF SAID SECTION 7 FOR A DISTANCE OF 1192.71 FEET; THENCE RUN N. 89°02'34" E. FOR A DISTANCE OF 234.85 FEET; THENCE RUN N. 00°57'26" W. FOR A DISTANCE OF 94.33 FEET; THENCE RUN N. 89°02'34" E. FOR A DISTANCE OF 275.09 FEET; THENCE RUN S. 00°58'59" E. FOR A DISTANCE OF 213.25 FEET; THENCE RUN S. 23°08'36" E. FOR A DISTANCE OF 181.54 FEET; THENCE RUN S. 29°50'52" E. FOR A DISTANCE OF 150.63 FEET; THENCE RUN S. 77°02'24" E. FOR A DISTANCE OF 72.93 FEET; THENCE RUN S. 42°59'46" E. FOR A DISTANCE OF 122.08 FEET; THENCE RUN S. 23°00'11" E. FOR A DISTANCE OF 731.63 FEET TO A POINT ON THE SOUTH LINE OF THE SOUTHWEST 1/4 OF SAID SECTION 7; THENCE CONTINUE S. 23°00'11" E. FOR A DISTANCE OF 181.53 FEET; THENCE RUN S. 50°48'00" E. FOR A DISTANCE OF 96.40 FEET; THENCE RUN S. 43°05'00" E. FOR A DISTANCE OF 105.54 FEET; THENCE RUN S. 11°18'00" E. FOR A DISTANCE OF 117.77 FEET; THENCE RUN S. 66°22'14" W. FOR A DISTANCE OF 182.27 FEET; THENCE RUN S. 57°47'32" W. FOR A DISTANCE OF 254.00 FEET; THENCE RUN S. 43°27'03" W. FOR A DISTANCE OF 151.31 FEET; THENCE RUN S. 43°26'29" W. FOR A DISTANCE OF 42.73 FEET; THENCE RUN S. 12°20'03" W. FOR A DISTANCE OF 71.58 FEET; THENCE RUN S. 27°49'01" W. FOR A DISTANCE OF 142.81 FEET; THENCE RUN S. 89°19'16" W. FOR A DISTANCE OF 38.73 FEET; THENCE RUN S. 03°28'13" W. FOR A DISTANCE OF 143.72 FEET; THENCE RUN S. 53°24'15" E. FOR A DISTANCE OF 280.30 FEET; THENCE RUN S. 62°27'08" E. FOR A DISTANCE OF 283.87 FEET; THENCE RUN S. 09°00'00" W. FOR A DISTANCE OF 58.89 FEET; THENCE RUN S. 67°00'00" W. FOR A DISTANCE OF 173.39 FEET; THENCE RUN S. 70°00'00" W. FOR A DISTANCE OF 374.70 FEET; THENCE RUN S. 48°00'00" W. FOR A DISTANCE OF 415.66 FEET; THENCE RUN S. 45°42'19" W. FOR A DISTANCE OF 306.93 FEET; THENCE RUN S. 37°30'44" W. FOR A DISTANCE OF 16.17 FEET; THENCE RUN S. 89°19'16" W. FOR A DISTANCE OF 60.00 FEET TO A POINT ON THE WEST LINE OF THE NORTHWEST 1/4 OF SAID SECTION 18; THENCE RUN N. 00°40'44" W. ALONG THE WEST LINE OF THE NORTHWEST 1/4 OF SAID SECTION 18 FOR A DISTANCE OF 2167.64 FEET TO THE POINT OF BEGINNING, CONTAINING 62.998 ACRES, MORE OR LESS.

BEARINGS REFER TO THE WEST LINE OF THE SOUTHWEST 1/4 OF SECTION 7, TOWNSHIP 45 SOUTH, RANGE 26 EAST, LEE COUNTY, FLORIDA, AS BEING N. 00°57'26" W.



GATEWAY PHASE 9
A SUBDIVISION LOCATED IN
SECTION 7 & 18, T45S, R26E,
LEE COUNTY, FLORIDA

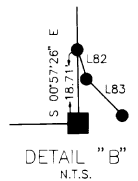
HOLE, MONTES AND ASSOCIATES
CONSULTING ENGINEERS AND SURVEYORS
6202F PRESIDENTIAL COURT
FORT MYERS, FLORIDA 33919
(813) 481-7874

W 1/4 COR.
SEC. 7
T45S, R26E

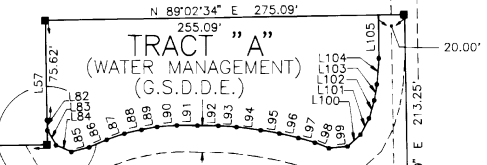
RANGE 25 E
RANGE 26 E

12 7
12 7

N 0°05'26" W
1452.63'



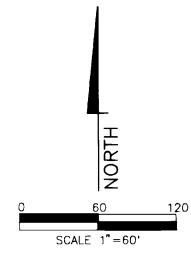
UNPLATTED



SEE DETAIL "B"

20' LAKE
MAINTENANCE
EASEMENT
G.S.D.D.E.

N 89°02'34" E 234.85'
164.85'
5'
10' U.E.
10' F.P. & L.
EASEMENT
O.R. BK. 2149
PAGES 196-199



SECTION LINE / RANGE LINE

TRACT "C"
WESTLINKS DRIVE

15' D.E. & J.E.

TRACT "J"
(FUTURE DEVELOPMENT)

UNPLATTED

UNPLATTED

TRACT "B"
(LANDSCAPE BUFFER)

(TO SEC. COR.) N 0°05'26" W 1192.71'
N 0°05'26" W 1192.73'
N 0°05'26" W 1192.79'
1000.00' (TO PCP)
S 0°05'26" E 650.00'

20' G.S.D.D.E.
O.R. BOOK 2176
PAGES 1705-1710

TRACT "D"
(WATER MANAGEMENT)
(G.S.D.D.E.)

N 22°35'50" E
5.80'

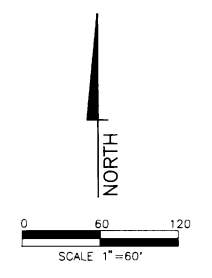
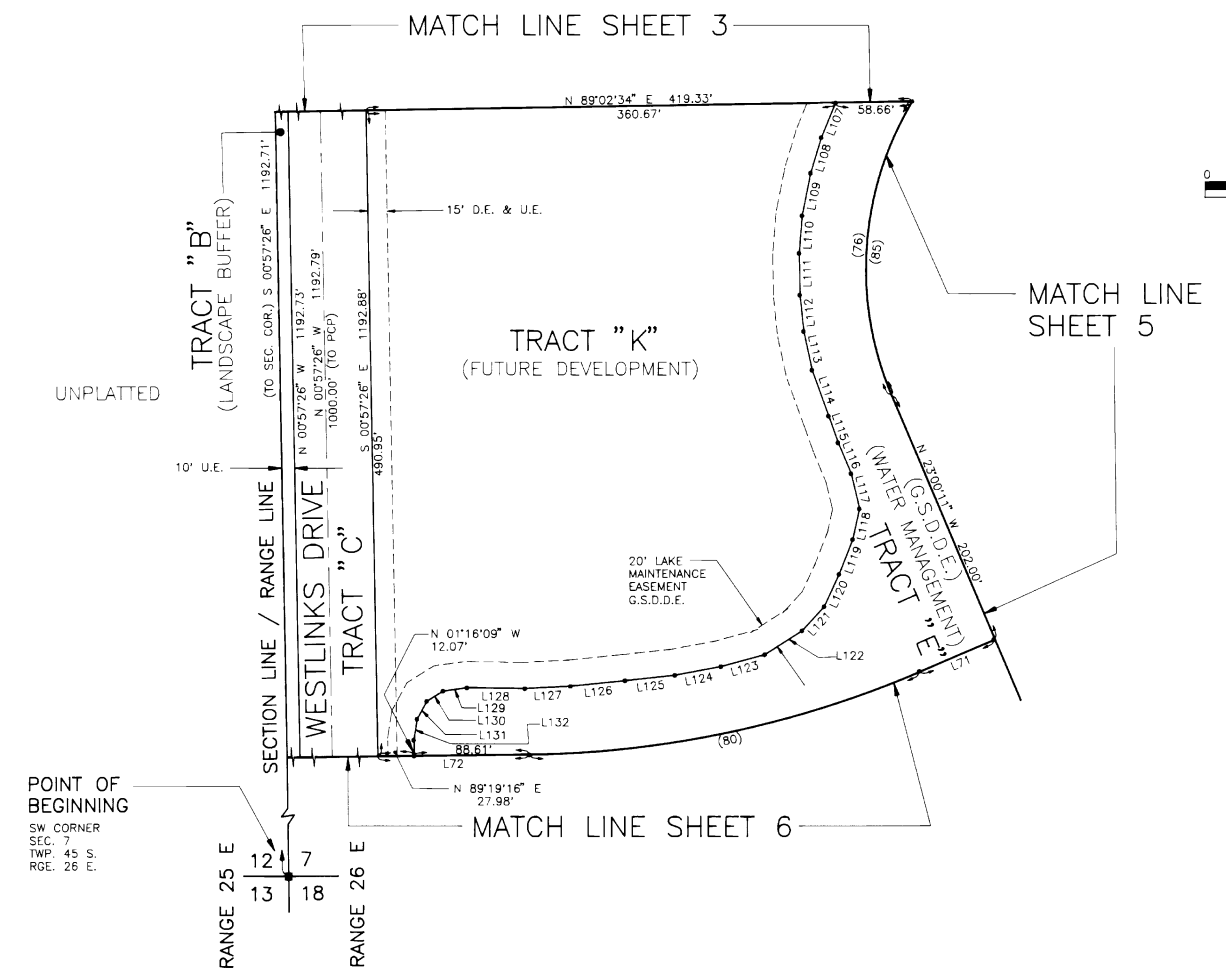
MATCH LINE
SHEET 5

MATCH LINE SHEET 4

360.67'
N 89°02'34" E 419.33'

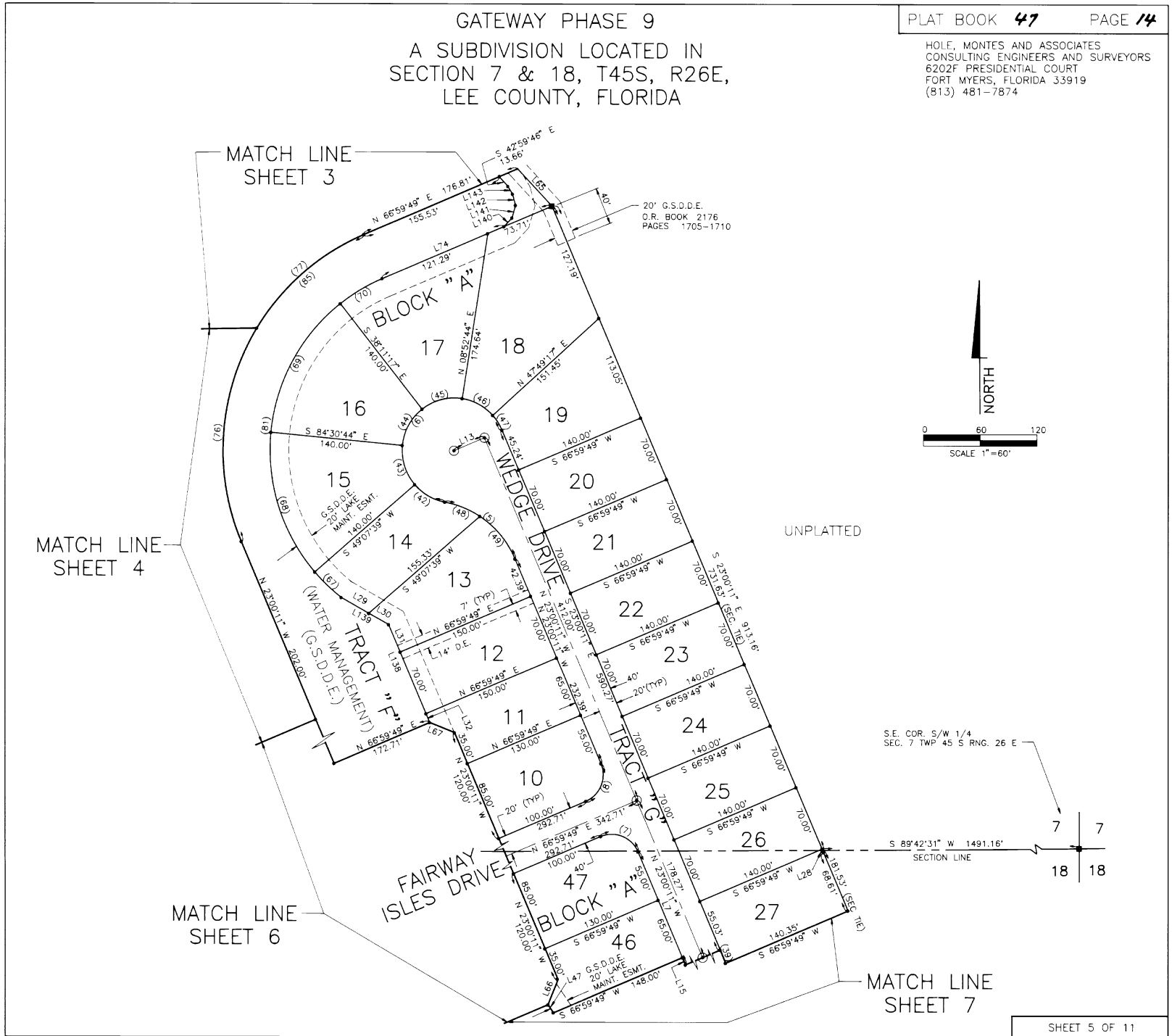
GATEWAY PHASE 9
 A SUBDIVISION LOCATED IN
 SECTION 7 & 18, T45S, R26E,
 LEE COUNTY, FLORIDA

HOLE, MONTES AND ASSOCIATES
 CONSULTING ENGINEERS AND SURVEYORS
 6202F PRESIDENTIAL COURT
 FORT MYERS, FLORIDA 33919
 (813) 481-7874



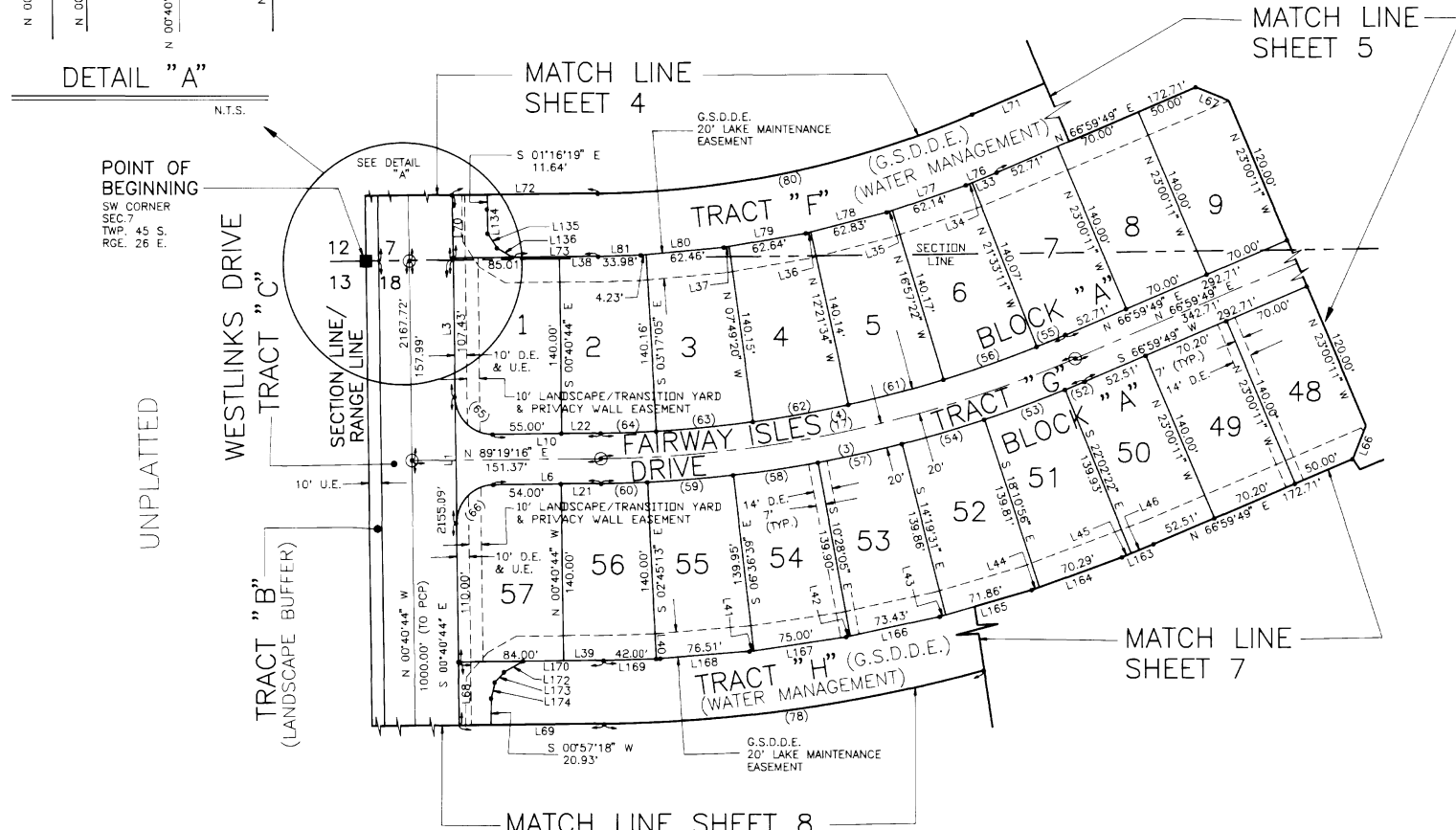
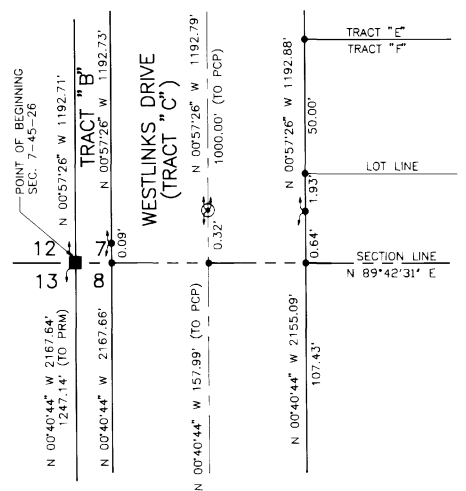
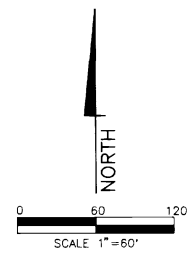
GATEWAY PHASE 9
 A SUBDIVISION LOCATED IN
 SECTION 7 & 18, T45S, R26E,
 LEE COUNTY, FLORIDA

HOLF, MONTES AND ASSOCIATES
 CONSULTING ENGINEERS AND SURVEYORS
 6202F PRESIDENTIAL COURT
 FORT MYERS, FLORIDA 33919
 (813) 481-7874



HOLE, MONTES AND ASSOCIATES
 CONSULTING ENGINEERS AND SURVEYORS
 6202F PRESIDENTIAL COURT
 FORT MYERS, FLORIDA 33919
 (813) 481-7874

GATEWAY PHASE 9
 A SUBDIVISION LOCATED IN
 SECTION 7 & 18, T45S, R26E,
 LEE COUNTY, FLORIDA

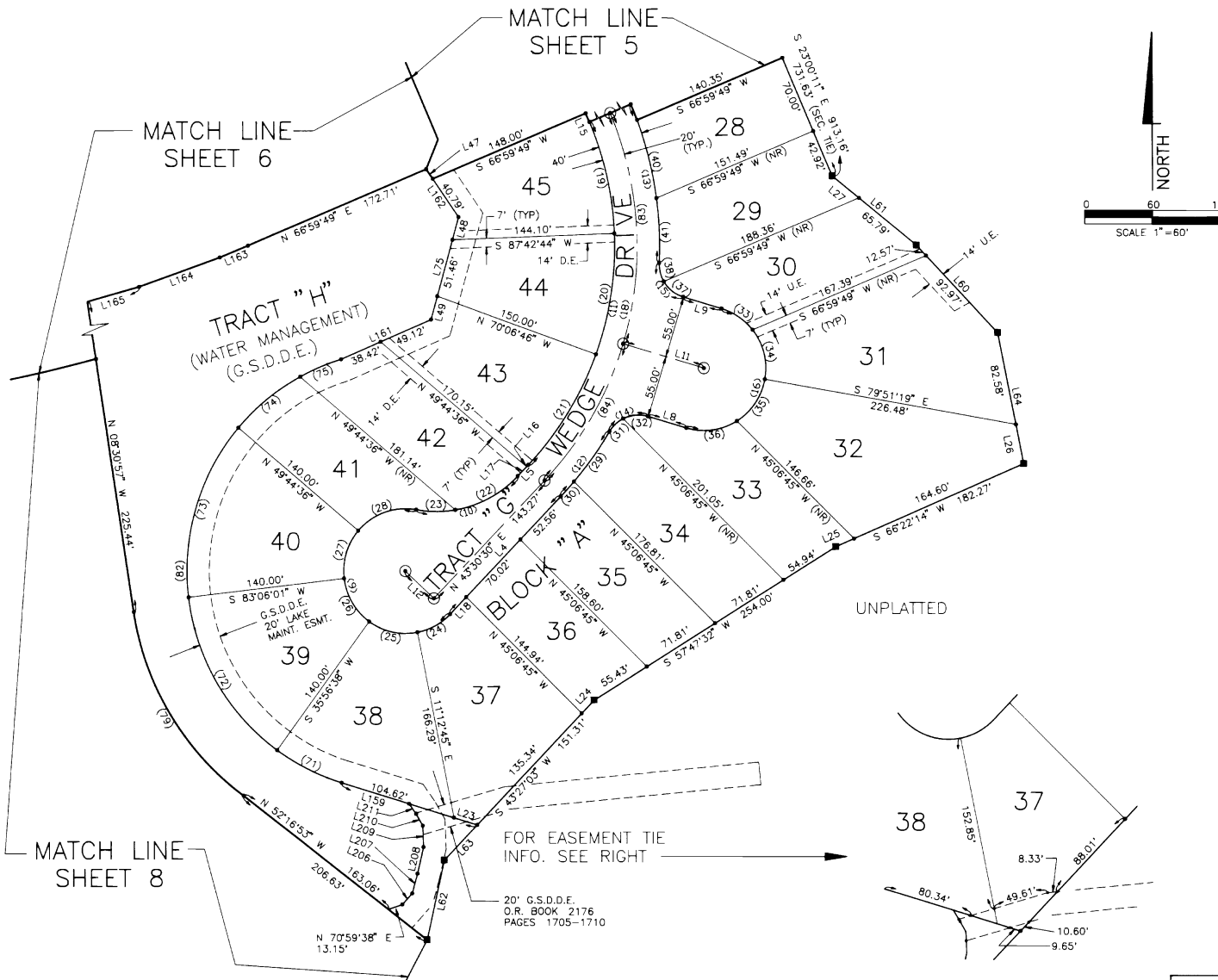


POINT OF BEGINNING
 SW CORNER
 SEC. 7
 TWP. 45 S.
 RGE. 26 E.

UNPLATTED

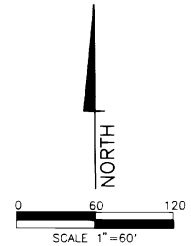
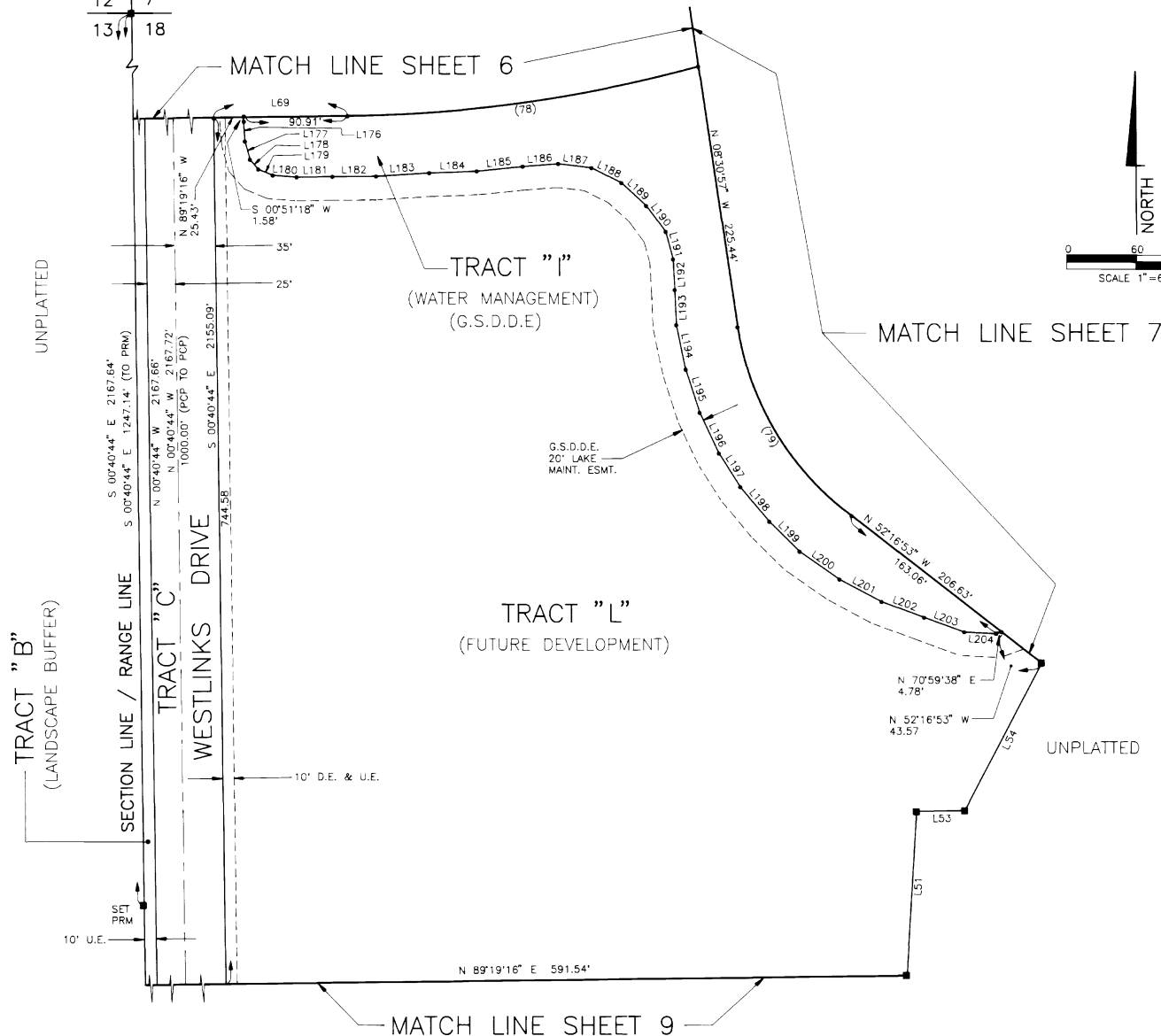
GATEWAY PHASE 9
 A SUBDIVISION LOCATED IN
 SECTION 7 & 18, T45S, R26E,
 LEE COUNTY, FLORIDA

HOLE, MONTES AND ASSOCIATES
 CONSULTING ENGINEERS AND SURVEYORS
 6202F PRESIDENTIAL COURT
 FORT MYERS, FLORIDA 33919
 (813) 481-7874



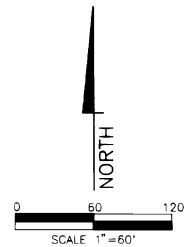
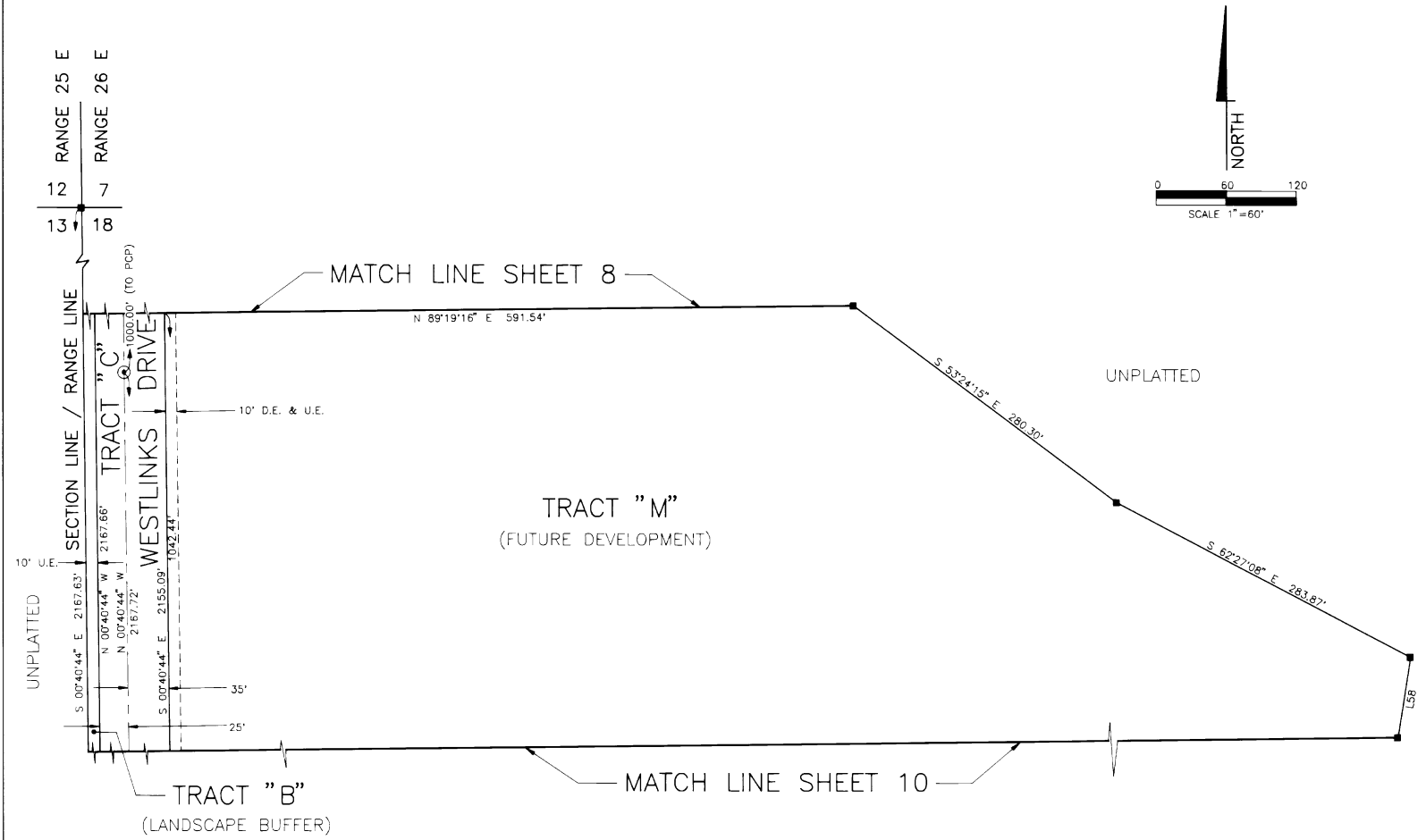
GATEWAY PHASE 9
 A SUBDIVISION LOCATED IN
 SECTION 7 & 18, T45S, R26E,
 LEE COUNTY, FLORIDA

HOLE, MONTE AND ASSOCIATES
 CONSULTING ENGINEERS AND SURVEYORS
 6202F PRESIDENTIAL COURT
 FORT MYERS, FLORIDA 33919
 (813) 481-7874



GATEWAY PHASE 9
 A SUBDIVISION LOCATED IN
 SECTION 7 & 18, T45S, R26E,
 LEE COUNTY, FLORIDA

HOLE, MONTES AND ASSOCIATES
 CONSULTING ENGINEERS AND SURVEYORS
 6202F PRESIDENTIAL COURT
 FORT MYERS, FLORIDA 33919
 (813) 481-7874



GATEWAY PHASE 9
 A SUBDIVISION LOCATED IN
 SECTION 7 & 18, T45S, R26E,
 LEE COUNTY, FLORIDA

HOLE, MONTES AND ASSOCIATES
 CONSULTING ENGINEERS AND SURVEYORS
 62027 PRESIDENTIAL COURT
 FORT MYERS, FLORIDA 33919
 (813) 481-7874

CURVE TABLE

NO.	RADIUS	DELTA	ARC	TANGENT	CHORD	CHORD BEARING
1	30.00'	90°00'00"	47.12'	30.00'	42.43'	S 44°19'16" W
2	30.00'	90°00'00"	47.12'	30.00'	42.43'	S 45°40'44" E
3	1020.00'	22°19'27"	397.42'	201.26'	394.91'	N 78°09'32" E
4	980.00'	22°19'27"	381.84'	193.37'	379.43'	N 78°09'32" E
5	100.00'	56°44'37"	99.04'	54.01'	95.04'	N 51°22'29" W
6	55.00'	236°44'37"	227.26'	N/A	96.79'	S 38°37'31" W
7	30.00'	90°00'00"	47.12'	30.00'	42.43'	N 21°59'49" E
8	30.00'	90°00'00"	47.12'	30.00'	42.43'	S 18°07'12" E
9	100.00'	56°44'37"	99.04'	54.01'	95.04'	N 71°52'48" E
10	280.00'	66°30'41"	325.04'	183.62'	307.09'	N 10°15'10" W
11	320.00'	12°48'50"	71.57'	35.93'	71.42'	N 37°06'05" E
12	320.00'	25°35'13"	142.90'	72.66'	141.72'	N 10°12'34" W
13	30.00'	75°56'41"	39.76'	23.42'	36.92'	S 68°40'00" W
14	30.00'	75°56'41"	39.76'	23.42'	36.92'	S 35°23'18" E
15	55.00'	180°00'00"	172.78'	0.00'	110.00'	N 16°38'21" E
16	1000.00'	22°19'27"	389.63'	197.32'	387.17'	N 78°09'32" E
17	300.00'	66°30'41"	348.25'	196.73'	329.03'	N 10°15'09" E
18	280.00'	20°02'01"	117.66'	51.18'	107.58'	N 12°39'44" W
19	280.00'	22°10'30"	108.37'	54.87'	107.58'	N 08°44'58" E
20	280.00'	23°37'16"	115.44'	58.55'	114.62'	N 31°41'52" E
21	100.00'	36°42'36"	64.07'	33.18'	62.98'	N 61°51'48" E
22	100.00'	20°02'01"	14.97'	7.66'	34.79'	S 89°45'44" W
23	55.00'	35°16'45"	33.87'	17.49'	33.33'	N 89°19'16" E
24	55.00'	47°09'23"	45.27'	24.00'	44.00'	S 77°38'03" E
25	55.00'	47°09'23"	45.27'	24.00'	44.00'	S 30°28'41" E
26	55.00'	47°09'23"	45.27'	24.00'	44.00'	S 16°40'42" E
27	55.00'	58°59'43"	57.58'	31.75'	55.00'	S 70°15'15" W
28	320.00'	09°41'03"	54.09'	27.11'	54.02'	N 35°32'11" E
29	320.00'	03°07'42"	17.48'	8.74'	17.48'	N 41°56'36" E
30	30.00'	32°19'58"	16.93'	8.70'	16.71'	S 48°51'54" W
31	30.00'	43°36'42"	22.83'	12.00'	22.29'	S 84°50'00" W
32	55.00'	35°18'56"	33.90'	17.51'	33.37'	N 55°42'11" W
33	55.00'	48°11'24"	46.26'	24.60'	44.91'	N 13°57'01" W
34	55.00'	47°41'44"	44.78'	24.31'	44.47'	S 45°19'04" E
35	55.00'	48°47'56"	46.84'	24.95'	45.44'	N 82°14'23" E
36	30.00'	43°03'12"	22.54'	11.83'	22.42'	S 51°50'03" E
37	55.00'	47°41'44"	44.78'	24.31'	44.47'	N 13°57'01" W
38	320.00'	02°40'55"	14.98'	7.66'	14.98'	N 21°39'44" W
39	320.00'	12°43'02"	71.02'	35.66'	70.88'	N 13°57'46" W
40	320.00'	10°11'17"	56.90'	28.53'	56.83'	N 02°30'36" W
41	55.00'	38°55'25"	37.36'	19.44'	36.65'	S 60°17'05" E
42	55.00'	46°18'39"	44.46'	23.52'	43.26'	N 73°44'19" E
43	55.00'	46°19'27"	44.47'	23.53'	43.27'	S 28°39'00" W
44	55.00'	47°04'01"	45.18'	23.95'	43.92'	S 75°20'44" W
45	55.00'	38°56'33"	37.38'	19.45'	36.67'	N 61°39'00" E
46	55.00'	47°41'44"	44.78'	24.31'	44.47'	N 13°57'01" W
47	55.00'	19°10'32"	18.41'	9.29'	18.32'	N 32°35'27" W
48	100.00'	23°00'54"	40.17'	20.36'	39.90'	N 68°14'21" W
49	100.00'	33°43'43"	58.87'	30.31'	58.02'	N 39°52'02" W
50	30.00'	90°00'00"	47.12'	30.00'	42.43'	N 21°59'49" E
51	30.00'	90°00'00"	47.12'	30.00'	42.43'	S 68°00'11" W
52	1020.00'	00°57'49"	17.15'	8.58'	17.15'	N 67°28'43" E
53	1020.00'	03°51'26"	68.67'	34.35'	68.65'	N 69°53'21" E
54	1020.00'	03°51'26"	68.67'	34.35'	68.65'	N 73°44'19" E
55	980.00'	01°27'00"	24.80'	12.40'	24.80'	N 67°43'19" E
56	980.00'	04°35'49"	78.63'	39.33'	78.60'	N 70°44'43" E
57	1020.00'	03°51'26"	68.67'	34.35'	68.65'	N 73°36'12" E
58	1020.00'	03°51'26"	68.67'	34.35'	68.65'	N 81°09'04" E
59	1020.00'	03°51'26"	68.67'	34.35'	68.65'	N 85°19'04" E
60	1020.00'	02°04'29"	36.92'	18.47'	36.93'	N 88°17'01" E
61	980.00'	04°35'49"	78.63'	39.33'	78.60'	N 75°20'32" E
62	980.00'	04°35'49"	78.63'	39.33'	78.60'	N 59°54'16" W
63	980.00'	04°32'15"	77.61'	38.82'	77.59'	N 84°26'47" E
64	980.00'	02°36'21"	44.57'	22.29'	44.57'	N 88°01'05" E
65	30.00'	90°00'00"	47.12'	30.00'	42.43'	S 45°40'44" E
66	30.00'	90°00'00"	47.12'	30.00'	42.43'	S 45°40'44" E
67	195.00'	11°21'24"	38.65'	19.39'	38.59'	S 46°32'13" E
68	195.00'	46°20'47"	157.74'	83.47'	153.47'	S 17°41'07" E
69	195.00'	46°19'27"	157.66'	83.42'	153.40'	S 28°39'00" W
70	195.00'	15°11'06"	95.18'	51.53'	95.16'	S 59°54'16" W
71	195.00'	18°56'38"	64.47'	32.53'	64.18'	S 63°31'41" E
72	195.00'	47°09'23"	160.49'	85.10'	156.00'	S 30°28'41" E
73	195.00'	47°09'23"	160.49'	85.10'	156.00'	S 16°40'42" W
74	195.00'	21°02'14"	71.60'	36.01'	71.60'	S 50°46'31" W
75	195.00'	11°42'22"	39.84'	19.99'	39.77'	S 67°08'49" W
76	245.00'	54°22'46"	232.53'	125.86'	223.90'	S 04°11'12" W
77	245.00'	35°33'71"	152.52'	78.71'	149.87'	S 49°11'12" E
78	1219.00'	14°32'44"	307.24'	153.62'	306.24'	N 82°04'04" E
79	245.00'	45°22'38"	194.04'	102.43'	189.00'	S 31°12'16" E
80	790.00'	22°19'27"	307.81'	155.88'	305.86'	N 78°09'32" E
81	195.00'	15°11'24"	405.73'	202.86'	336.40'	S 07°23'27" W
82	195.00'	14°00'00"	496.80'	248.40'	372.86'	S 00°00'00" E
83	300.00'	39°38'32"	207.56'	108.13'	203.45'	S 03°10'55" E
84	300.00'	26°52'09"	140.69'	71.66'	139.40'	S 30°04'25" W
85	245.00'	90°00'00"	384.85'	245.00'	346.48'	N 21°59'49" E

LINE TABLE

Line	Bearing	Distance
L1	S 00°40'44" E	100.00'
L2	N 89°19'16" E	116.36'
L3	S 00°40'44" E	108.07'
L4	S 43°30'30" W	143.27'
L5	S 43°30'30" W	13.65'
L6	N 89°19'16" E	86.35'
L7	N 23°00'11" W	128.27'
L8	N 73°21'39" W	35.48'
L9	S 73°21'39" E	35.48'
L10	N 89°19'16" E	86.35'
L11	N 73°21'39" W	75.00'
L12	N 46°29'30" W	35.00'
L13	N 66°59'49" E	35.00'
L14	N 00°57'26" W	1.93'
L15	N 23°00'11" W	8.27'
L16	N 43°30'30" E	2.19'
L17	N 43°30'30" E	11.46'
L18	N 43°30'30" W	26.69'
L19	S 73°21'39" E	35.48'
L20	N 31°41'52" E	35.48'
L21	N 89°19'16" E	32.35'
L22	N 89°19'16" E	31.35'
L23	S 73°00'00" E	21.66'
L24	S 43°27'03" W	15.98'
L25	S 66°22'14" W	17.67'
L26	S 11°18'00" E	35.19'
L27	S 50°48'00" E	30.62'
L28	S 23°00'11" E	1.39'
L29	N 60°40'54" W	33.59'
L30	N 60°40'54" W	24.00'
L31	N 23°00'11" W	31.25'
L32	N 23°00'11" W	10.00'
L33	N 67°54'02" E	21.26'
L34	N 67°54'02" E	5.23'
L35	N 71°04'44" E	4.55'
L36	N 75°37'43" E	3.86'
L37	N 80°10'43" E	4.04'
L38	N 89°19'16" E	31.35'
L39	N 89°19'16" E	32.35'
L40	N 86°16'56" W	.06'
L41	N 81°34'26" W	1.51'
L42	S 77°47'39" W	3.08'
L43	S 74°00'52" W	4.65'
L44	S 70°14'05" W	6.22'
L45	S 67°40'15" W	7.78'
L46	S 67°40'15" W	19.51'
L47	N 34°18'47" W	10.20'
L48	N 15°18'06" E	20.81'
L49	N 15°15'46" E	21.16'
L50	S 89°19'16" W	60.00'
L51	S 03°28'13" W	143.72'
L52	S 89°02'34" W	70.00'
L53	S 89°19'16" W	38.73'
L54	S 27°49'01" W	142.81'
L55	S 77°02'24" E	72.93'
L56	S 42°59'46" E	68.87'
L57	N 00°57'26" W	94.33'
L58	S 09°00'00" W	68.89'
L59	N 37°30'44" E	16.17'
L60	N 00°40'04" W	50.00'
L61	S 50°48'00" E	96.40'
L62	S 12°20'03" W	71.58'
L63	S 43°28'29" W	42.73'
L64	N 11°18'00" E	117.77'
L65	S 42°59'46" E	53.21'
L66	N 21°59'29" E	28.29'
L67	S 68°00'11" E	28.28'
L68	N 00°40'04" W	50.00'
L69	S 89°19'16" W	116.35'
L70	N 00°57'26" W	51.93'
L71	N 66°59'49" E	62.71'

LINE TABLE

Line	Bearing	Distance
L72	N 89°19'16" E	116.36'
L73	N 89°19'16" E	69.03'
L74	N 66°59'49" E	140.00'
L75	S 15°15'46" W	93.43'
L76	N 67°54'02" E	26.49'
L77	N 71°04'44" E	13.52'
L78	N 75°37'43" E	66.69'
L79	N 80°10'43" E	66.69'
L80	N 84°43'42" E	66.69'
L81	N 89°09'44" E	33.98'
L82	N 03°10'17" W	7.78'
L83	N 30°43'10" W	12.99'
L84	N 66°48'37" W	12.79'
L85	S 75°15'22" W	14.13'
L86	S 67°19'29" W	14.71'
L87	S 70°44'56" W	14.28'
L88	S 77°31'08" W	13.44'
L89	S 73°00'00" W	126.28'
L90	S 85°44'29" W	15.18'
L91	N 89°29'54" W	15.67'
L92	N 89°30'15" W	15.89'
L93	N 86°13'52" W	13.96'
L94	N 82°33'01" W	18.72'
L95	N 80°08'37" W	14.50'
L96	N 76°44'14" W	15.02'
L97	N 74°48'39" W	13.03'
L98	N 67°53'20" W	11.62'
L99	S 83°56'47" W	14.40'
L100	S 47°53'35" W	13.35'
L101	S 27°43'42" W	14.00'
L102	S 16°23'24" W	14.23'
L103	S 09°09'08" W	12.19'
L104	S 04°22'33" W	19.85'
L105	S 00°57'26" W	32.85'
L106	S 30°32'24" E	33.80'
L107	N 22°35'50" E	28.71'
L108	N 17°01'25" E	28.35'
L109	N 11°25'24" E	32.93'
L110	N 04°44'55" E	28.64'
L111	N 00°55'00" W	31.77'
L112	N 05°47'48" W	27.67'
L113	N 12°10'01" W	30.23'
L114	N 19°56'35" W	37.17'
L115	N 19°42'12" W	21.60'
L116	N 22°50'16" W	26.54'
L117	N 13°20'43" W	27.53'
L118	N 12°38'24" W	23.89'
L119	N 21°37'04" W	28.35'
L120	N 25°12'07" W	27.16'
L121	N 42°53'22" E	25.01'
L122	N 57°28'23" E	33.82'
L123	N 74°54'45" E	34.91'
L124	N 79°35'09" E	35.97'
L125	N 83°51'08" E	38.